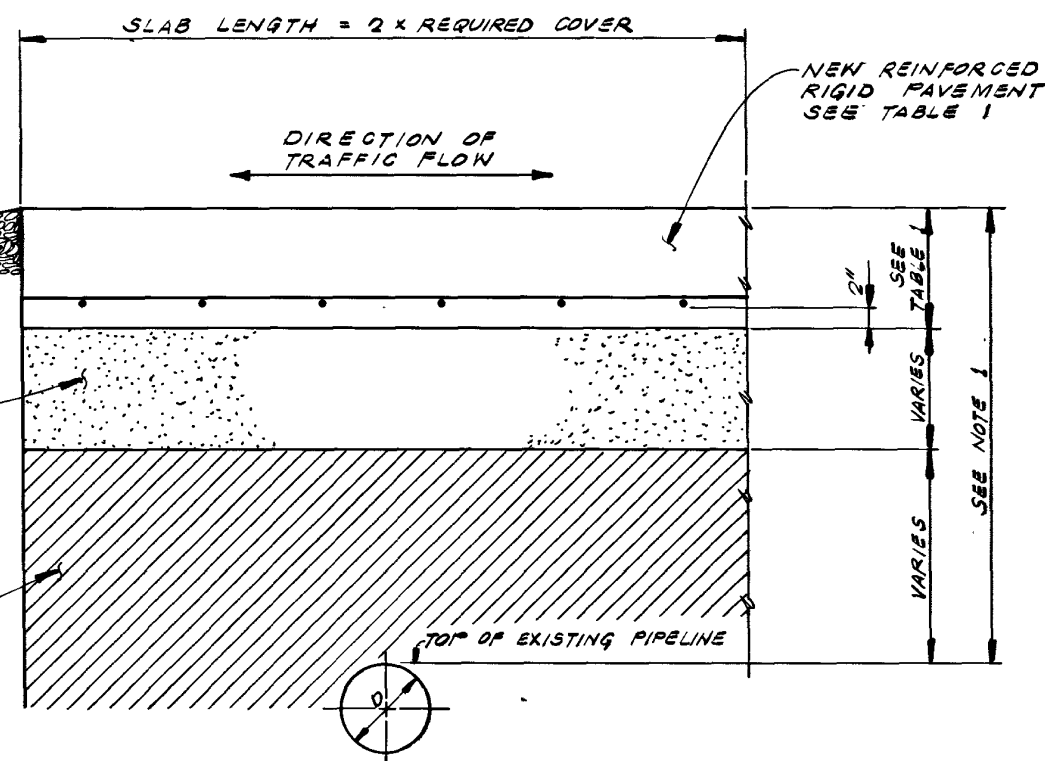


SLOPE BACK TO EXISTING GRADE WITH WELL COMPACTED CRUSHED STONE MIX OR APPROVED PAVEMENT DESIGN AT 5:1 SLOPE (MAX.) TYPICAL EACH END

INSTALL COMPACTED SAND FILL TO ACHIEVE REQUIRE COVER

UNDISTURBED WELL COMPACTED SOIL



NOTES:

1. DEPTH OF REQUIRED COVER TO BE DETERMINED BY PIPELINE DESIGN DEPARTMENT FOR SPECIFIC CONDITIONS AT EACH CROSSING. ANY REQUIRED SAND FILL SHALL BE MECHANICALLY COMPACTED TO 95% PROCTOR OF ADJACENT UNDISTURBED SOIL.
2. REMOVE EXISTING TOPSOIL TO A MINIMUM DEPTH OF 1'-0" BELOW GRADE.
3. SLAB WIDTH SHALL BE DETERMINED BY N.G.P.L. FIELD REPRESENTATIVE.
4. SLAB LENGTH SHALL BE A MINIMUM OF TWO TIMES THE REQUIRED COVER OR 4'-0", WHICHEVER IS GREATER, AS DETERMINED BY SPECIFIC CONDITIONS (SEE NOTE 1.)
5. SLAB THICKNESS AND REINFORCEMENT REQUIREMENTS SHALL BE DETERMINED BY VEHICLE WEIGHT (SEE TABLE 1.)
6. FOR HEAVY EQUIPMENT CROSSINGS OF NEW PIPELINES OR RECENTLY EXCAVATED PIPELINES, CONSULT ENGINEERING SERVICES.
7. CONCRETE SHALL REACH A MINIMUM COMPRESSIVE STRENGTH OF 3000 P.S.I. AT 28 DAYS.

TABLE 1

VEHICLE WEIGHT (LOADED) LBS.	SLAB AND REINFORCEMENT DESCRIPTION
UP TO 100,000	1'-0" THICK SLAB WITH #6 REBARS AT 8" ON CENTER EACH WAY
101,000 TO 200,000	1'-3" THICK SLAB WITH #7 REBARS AT 8" ON CENTER EACH WAY
201,000 TO 300,000	1'-6" THICK SLAB WITH #8 REBARS AT 10" ON CENTER EACH WAY

DESIGNED IN ACCORDANCE WITH TITLE 49-PART 192 OF MINIMUM FEDERAL SAFETY STANDARDS AND ASME GUIDE FOR GAS PIPING SYSTEMS. LATEST EDITIONS.

MWD/1/16

NO.	DATE	BY	A.F.E. NO.	DATE	BY	DESCRIPTION	ENGR.	DATE	BY	DWG. NO.	TITLE
1.	3/17/93	JM	STD.			ADDED NOTE #7 & REV. NOTE #6	CPD	3-18-93	JW		
0	3/16/90	JM	STD.			ISSUED FOR NGPL SYSTEM WIDE USE		3-22-90	JW		

**N**  
NATURAL GAS PIPELINE COMPANY OF AMERICA  
A MIDCON CORP. COMPANY  
LOMBARD, ILLINOIS

A.F.E. STANDARD	DATE	APPROVED
PRELIMINARY		REB
APPROVED FOR CONSTRUCTION		APPROVED

CHIEF ENGR.

**PROTECTIVE SLAB FOR HEAVY EQUIPMENT CROSSING (EXISTING PIPELINES ONLY)**

STANDARD DRAWING

DRAWN JM	CHK. DR. JW	SCALE 4'	DATE 3-16-90
CHK. ENGR. PROJ. ENGR. MGR. DES.	FILE NO.		
DIRECTOR	STD-32-D2		