

Warren Water, District

1204 East 2nd Ave.
Indianola, Iowa 50125
(515) 962-1200
1-866-962-1200



wwd@warrenwaterdistrict.com

May 18, 2012

Jeffry McCollough

Iowa Department of Transportation
Office of Local Systems
800 Lincoln Way
Ames, IA 50010

Project #:STPN-092-5(50)—2J-91 (ROW)
STP-092-5(51)—2C-91 (Grade & Pave)

Dear Mr. McCullough:

Enclosed please find Warren Water District maps for the above-named Project.

It would appear at Hwy 92 & County Hwy R57 (map 1), the District would be required to relocate the 6"/Encased Highway crossing (east/west) on State Hwy 92 and also the 2 ½"/Encased Highway Crossing (north/south) at County Hwy 57.

On Map 2, it would be necessary to relocate the 4" county Road Crossing at 90th Ave (east/west) and also the 4"/Encased Highway Crossing (north/south) at State Hwy 91 & 90th Ave.

Please let us know if you need additional information.

Sincerely,

Peggy Crabbs
System Manager



PROPOSED HIGHWAY IMPROVEMENT NOTICE

Pursuant to Iowa Law, this notice advises that the Iowa Department of Transportation is planning the improvement identified below.

TO: Peggy Crabbs System Manager Warren Water District (Water) 1204 East 2nd Avenue Indianola, IA 50125	FROM: Jeffry N. McCollough Iowa Department of Transportation Office of Local Systems 800 Lincoln Way Ames IA 50010
Project No.: STPN-092-5(50)--2J-91 (ROW) STP-092-5(51)--2C-91 (Grade and Pave)	County: Warren
Highway Route Number or Name: IA 92	Transportation District: Fairfield
Project Location: Unknown Pavement - Grade and Replace, Ia. 92 From Just W. Of Co. Rd. R-57 E. To Just E. of South N St. In Indianola	
Scheduled Construction Letting: 1/15/2014	Anticipated Year of Construction: 2013
District Utility Coordinator: Bonnie Clancy	Notification Date: 3/5/2012

NOTICE ACKNOWLEDGEMENT

Return this form within 7 days of receipt in the enclosed envelope:

Receipt of notice is acknowledged.

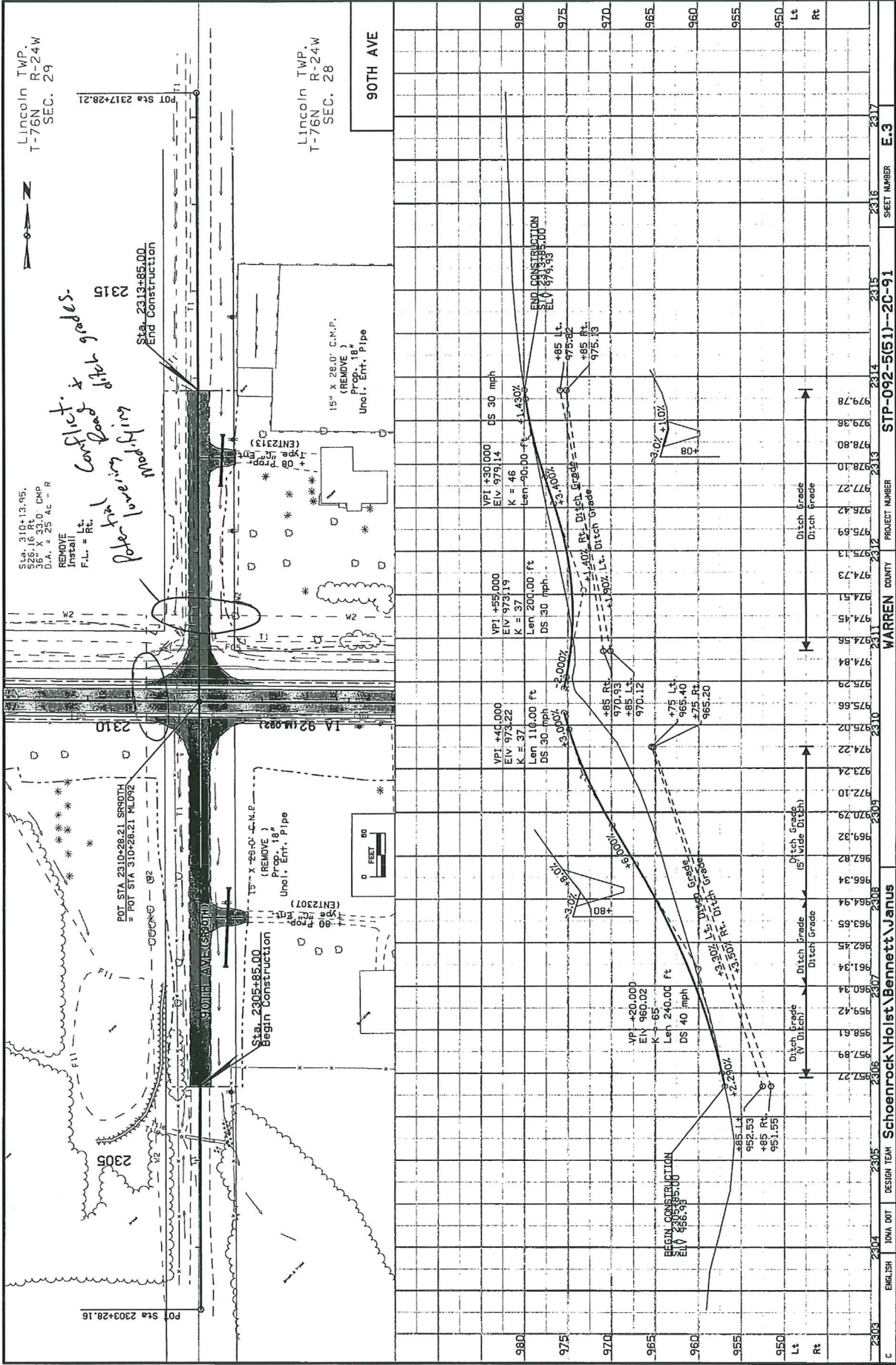
- We have no utility facilities in the vicinity of the improvement.
- We have utility facilities in the improvement vicinity and will provide a description and general location on or before 6/3/2012.
- We have utility facilities in the improvement vicinity; their description and general location shown on the attached service area maps.

Utility: Warren Water District 1204 E. 2nd Ave Indianola, IA 50125	Utility Authorized Representative Signature: <i>Peggy N. Crabbs</i>	Date: 3/8/12
	Title: Manager	
	Phone: 515-962-1200	

Warren Water District



2



Lincoln TWP.
T-76N R-24W
SEC. 29

Lincoln TWP.
T-76N R-24W
SEC. 28

Sta. 310+13.95,
566.16 Rt. C.M.P.
D.A. = 23 AC-R
REMOVE
Install
F.L. = Rt.

Handwritten notes:
POT STA 310+28.21
POT STA 2317+28.21
Mud retaining Wall
Curb & Gutter
Pit & Manhole

POT Sta 2303+28.16

POT STA 2310+28.21 SR90TH
= POT STA 310+28.21 NL092

Sta. 2313+85.00
End Construction

Sta. 2305+85.00
Begin Construction

15" X 28" C.M.P.
(REMOVE)
Prop. 18"
Uncl. Ent. Pipe

15" X 28" C.M.P.
(REMOVE)
Prop. 18"
Uncl. Ent. Pipe

90TH AVE

Station	Elevation	Grade	Notes
2303	957.27	+2.25%	Ditch Grade (V Ditch)
2304	958.61	+2.25%	Ditch Grade (V Ditch)
2305	959.42	+2.25%	Ditch Grade (V Ditch)
2306	961.34	+3.90%	Ditch Grade (V Ditch)
2307	963.45	+3.90%	Ditch Grade (V Ditch)
2308	965.34	+3.90%	Ditch Grade (V Ditch)
2309	967.82	+3.90%	Ditch Grade (V Ditch)
2310	970.79	+3.90%	Ditch Grade (V Ditch)
2311	974.22	+3.90%	Ditch Grade (V Ditch)
2312	975.66	+3.90%	Ditch Grade (V Ditch)
2313	975.07	+3.90%	Ditch Grade (V Ditch)
2314	975.29	+3.90%	Ditch Grade (V Ditch)
2315	974.45	+3.90%	Ditch Grade (V Ditch)
2316	974.51	+3.90%	Ditch Grade (V Ditch)
2317	975.69	+3.90%	Ditch Grade (V Ditch)
2318	975.13	+3.90%	Ditch Grade (V Ditch)
2319	974.73	+3.90%	Ditch Grade (V Ditch)
2320	975.69	+3.90%	Ditch Grade (V Ditch)
2321	975.69	+3.90%	Ditch Grade (V Ditch)
2322	975.69	+3.90%	Ditch Grade (V Ditch)
2323	975.69	+3.90%	Ditch Grade (V Ditch)
2324	975.69	+3.90%	Ditch Grade (V Ditch)
2325	975.69	+3.90%	Ditch Grade (V Ditch)
2326	975.69	+3.90%	Ditch Grade (V Ditch)
2327	975.69	+3.90%	Ditch Grade (V Ditch)
2328	975.69	+3.90%	Ditch Grade (V Ditch)
2329	975.69	+3.90%	Ditch Grade (V Ditch)
2330	975.69	+3.90%	Ditch Grade (V Ditch)
2331	975.69	+3.90%	Ditch Grade (V Ditch)
2332	975.69	+3.90%	Ditch Grade (V Ditch)
2333	975.69	+3.90%	Ditch Grade (V Ditch)
2334	975.69	+3.90%	Ditch Grade (V Ditch)
2335	975.69	+3.90%	Ditch Grade (V Ditch)
2336	975.69	+3.90%	Ditch Grade (V Ditch)
2337	975.69	+3.90%	Ditch Grade (V Ditch)
2338	975.69	+3.90%	Ditch Grade (V Ditch)
2339	975.69	+3.90%	Ditch Grade (V Ditch)
2340	975.69	+3.90%	Ditch Grade (V Ditch)
2341	975.69	+3.90%	Ditch Grade (V Ditch)
2342	975.69	+3.90%	Ditch Grade (V Ditch)
2343	975.69	+3.90%	Ditch Grade (V Ditch)
2344	975.69	+3.90%	Ditch Grade (V Ditch)
2345	975.69	+3.90%	Ditch Grade (V Ditch)
2346	975.69	+3.90%	Ditch Grade (V Ditch)
2347	975.69	+3.90%	Ditch Grade (V Ditch)
2348	975.69	+3.90%	Ditch Grade (V Ditch)
2349	975.69	+3.90%	Ditch Grade (V Ditch)
2350	975.69	+3.90%	Ditch Grade (V Ditch)
2351	975.69	+3.90%	Ditch Grade (V Ditch)
2352	975.69	+3.90%	Ditch Grade (V Ditch)
2353	975.69	+3.90%	Ditch Grade (V Ditch)
2354	975.69	+3.90%	Ditch Grade (V Ditch)
2355	975.69	+3.90%	Ditch Grade (V Ditch)
2356	975.69	+3.90%	Ditch Grade (V Ditch)
2357	975.69	+3.90%	Ditch Grade (V Ditch)
2358	975.69	+3.90%	Ditch Grade (V Ditch)
2359	975.69	+3.90%	Ditch Grade (V Ditch)
2360	975.69	+3.90%	Ditch Grade (V Ditch)
2361	975.69	+3.90%	Ditch Grade (V Ditch)
2362	975.69	+3.90%	Ditch Grade (V Ditch)
2363	975.69	+3.90%	Ditch Grade (V Ditch)
2364	975.69	+3.90%	Ditch Grade (V Ditch)
2365	975.69	+3.90%	Ditch Grade (V Ditch)
2366	975.69	+3.90%	Ditch Grade (V Ditch)
2367	975.69	+3.90%	Ditch Grade (V Ditch)
2368	975.69	+3.90%	Ditch Grade (V Ditch)
2369	975.69	+3.90%	Ditch Grade (V Ditch)
2370	975.69	+3.90%	Ditch Grade (V Ditch)
2371	975.69	+3.90%	Ditch Grade (V Ditch)
2372	975.69	+3.90%	Ditch Grade (V Ditch)
2373	975.69	+3.90%	Ditch Grade (V Ditch)
2374	975.69	+3.90%	Ditch Grade (V Ditch)
2375	975.69	+3.90%	Ditch Grade (V Ditch)
2376	975.69	+3.90%	Ditch Grade (V Ditch)
2377	975.69	+3.90%	Ditch Grade (V Ditch)
2378	975.69	+3.90%	Ditch Grade (V Ditch)
2379	975.69	+3.90%	Ditch Grade (V Ditch)
2380	975.69	+3.90%	Ditch Grade (V Ditch)
2381	975.69	+3.90%	Ditch Grade (V Ditch)
2382	975.69	+3.90%	Ditch Grade (V Ditch)
2383	975.69	+3.90%	Ditch Grade (V Ditch)
2384	975.69	+3.90%	Ditch Grade (V Ditch)
2385	975.69	+3.90%	Ditch Grade (V Ditch)
2386	975.69	+3.90%	Ditch Grade (V Ditch)
2387	975.69	+3.90%	Ditch Grade (V Ditch)
2388	975.69	+3.90%	Ditch Grade (V Ditch)
2389	975.69	+3.90%	Ditch Grade (V Ditch)
2390	975.69	+3.90%	Ditch Grade (V Ditch)
2391	975.69	+3.90%	Ditch Grade (V Ditch)
2392	975.69	+3.90%	Ditch Grade (V Ditch)
2393	975.69	+3.90%	Ditch Grade (V Ditch)
2394	975.69	+3.90%	Ditch Grade (V Ditch)
2395	975.69	+3.90%	Ditch Grade (V Ditch)
2396	975.69	+3.90%	Ditch Grade (V Ditch)
2397	975.69	+3.90%	Ditch Grade (V Ditch)
2398	975.69	+3.90%	Ditch Grade (V Ditch)
2399	975.69	+3.90%	Ditch Grade (V Ditch)
2400	975.69	+3.90%	Ditch Grade (V Ditch)

WARREN COUNTY PROJECT NUMBER 2311-2317 STP-092-5(51)-2C-91 SHEET NUMBER E.3

8:10:56 AM 3/27/2012 a.janun2 M:\Projects\100591\998\10920100\Design\91092051.E01.dwg

DESIGN TEAM Schoenrock/Holst/Bennett/Janun

Warren Water District

