

District 6 2013-2017 Iowa Highway Program

Buchanan County

(as approved by the Iowa Transportation Commission Nov. 13, 2012)

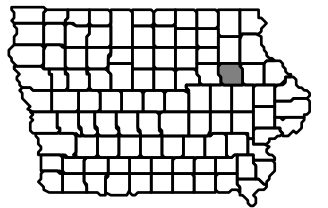
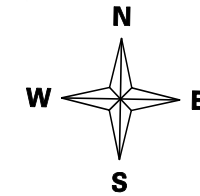
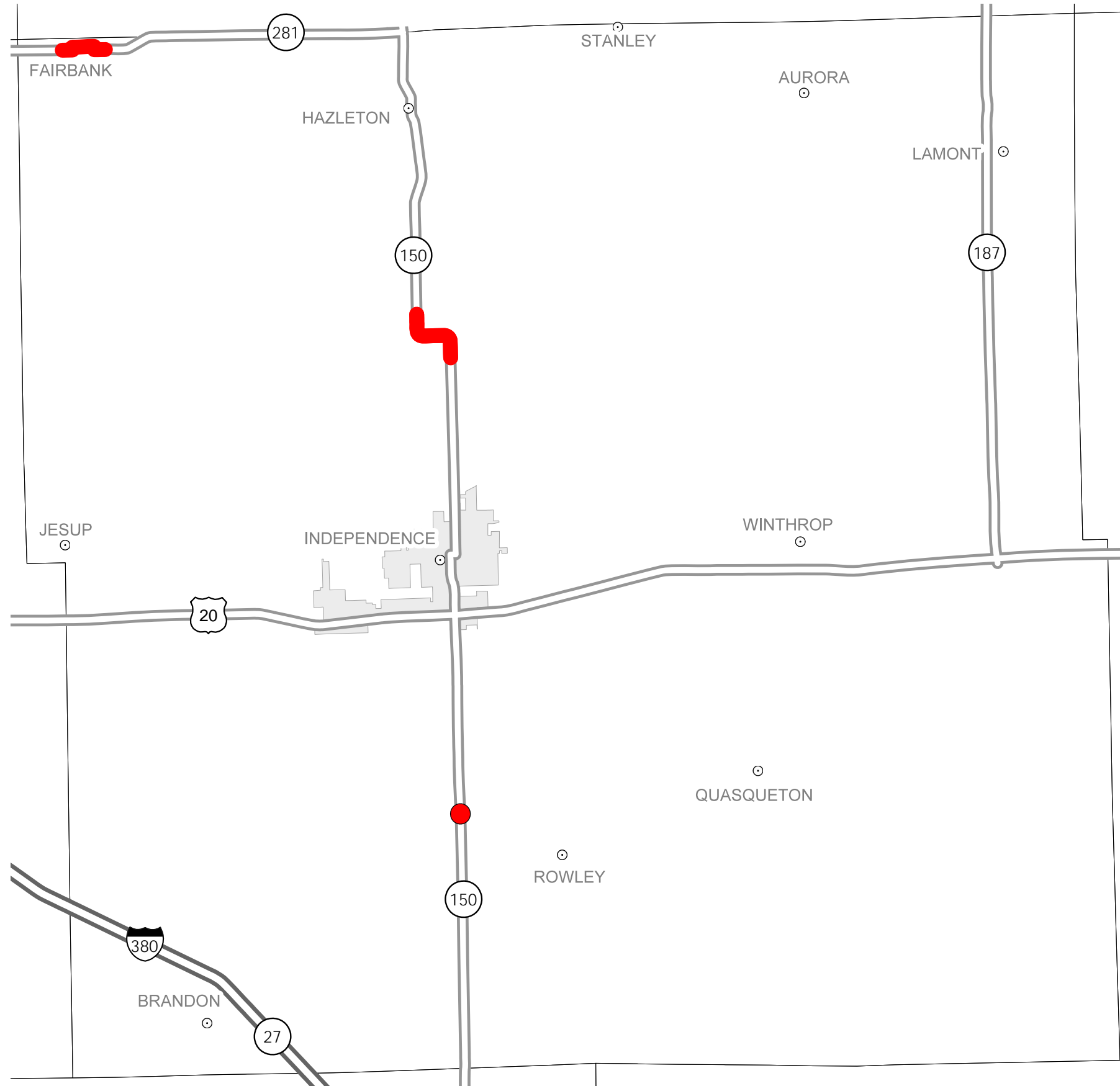
IOWA

STATE HIGHWAY MAP
Prepared by



In Cooperation With
United States
Department of Transportation

Structure	Highway
● 2013	—
● 2014	—
● 2015	—
● 2016	—
● 2017	—



Jim Schnoebelen
District 6 Engineer
430 16th Ave. S.W.
Cedar Rapids, Iowa 52404
319-364-0235
jim.schnoebelen@dot.iowa.gov

Notes:

- Does not include minor right of way, erosion control, patching, bridge washing or other minor projects.
- Only the first year of multiyear projects are shown.
- Most safety and noninterstate pavement resurfacing projects are identified for only the first year. Therefore, few projects of that type are shown for years 2014 through 2017.
- Map is subject to change and is not to scale.
- For more information, see iowadot.gov/program_management/five_year.html.