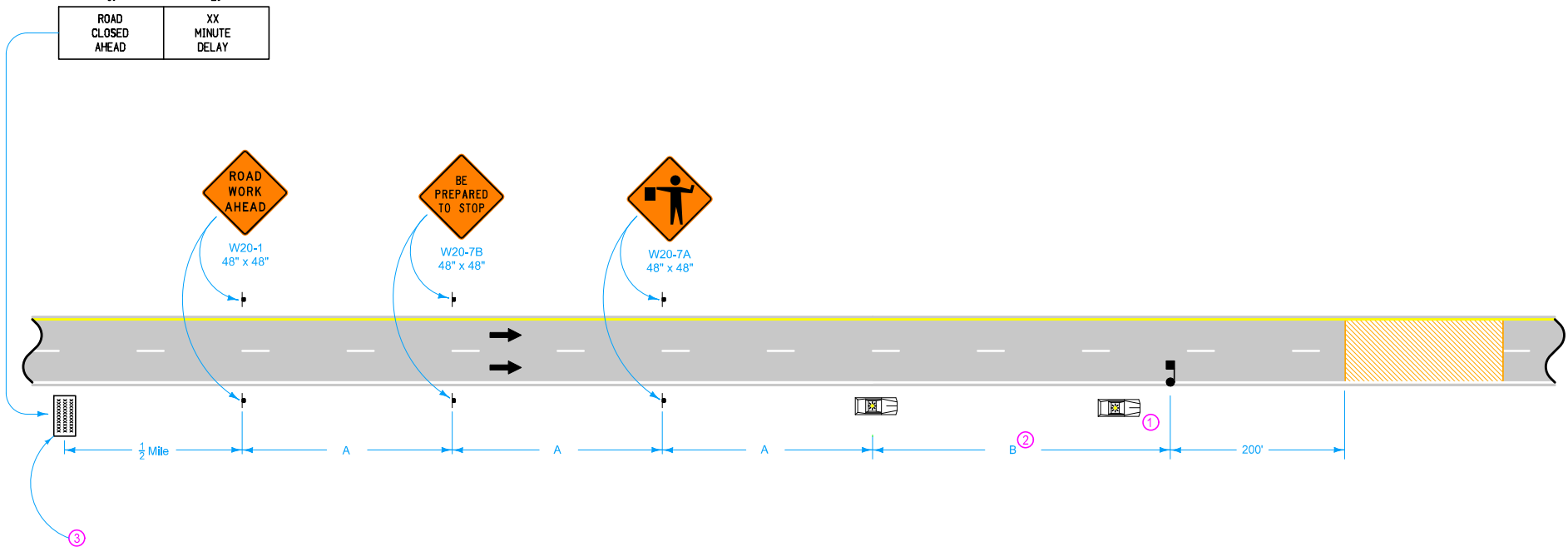


1. ROAD CLOSED AHEAD	2. XX MINUTE DELAY
-------------------------------	-----------------------------



LEGEND

- Traffic Sign
- Law Enforcement Vehicle
- Flagger
- Changeable Message Sign
- Work Area
- Direction of Traffic

SPEED LIMIT (mph)	A	B
35 or less	250'	250'
40 - 45	350'	350'
50 or greater	1000'	2500'

- ① A vehicle with an amber revolving light or amber strobe light may be substituted for leading law enforcement vehicle.
- ② This distance may be increased to provide adequate storage for stopped vehicles.
- ③ Optional for speed limits less than 55 mph.

Possible Contract Items:
 Traffic Control
 Flaggers
 Changeable Message Signs

Iowa Department of Transportation STANDARD ROAD PLAN	REVISION
	5 04-16-13
TC-451 SHEET 1 of 1	
REVISIONS: Modified circle note 1.	
<i>Deanna Macfild</i> APPROVED BY DESIGN METHODS ENGINEER	
TEMPORARY ROAD CLOSURE ON DIVIDED HIGHWAY	