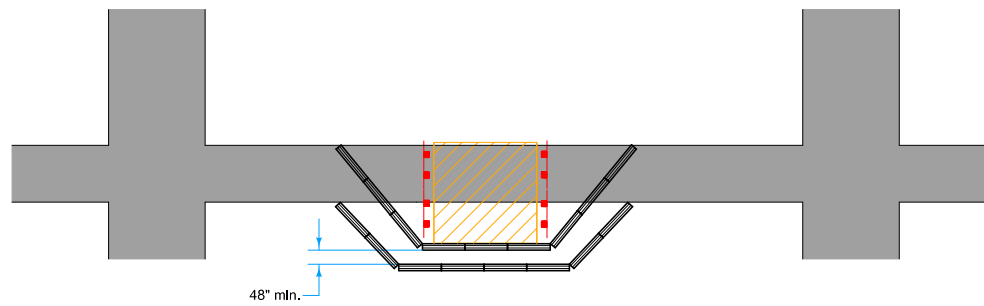









Acceptable materials and construction method for Pedestrian Channelizer will be defined in the contract documents. When Temporary Barrier Rail is specified as the Pedestrian Channelizer, Section 2528 of the Standard Specifications applies. For other types of Pedestrian Channelizers, the length of Pedestrian Channelizers installed will be measured in feet. Payment will be at the contract price per linear foot.



Possible Contract Items:
 Pedestrian Channelizer
 Temporary Barrier Rail
 Maintenance of Pedestrian Traffic

Possible Tabulation:
 113-3

LEGEND	
	Sidewalk
	Direction of Traffic
	Work Area
	Type III Barricade
	Pedestrian Channelizer

 Iowa Department of Transportation	REVISION	
	NEW	10-18-11
STANDARD ROAD PLAN	TC-602	
REVISIONS: New	SHEET 1 of 1	
 APPROVED BY DESIGN METHODS ENGINEER		
SIDEWALK DIVERSION		