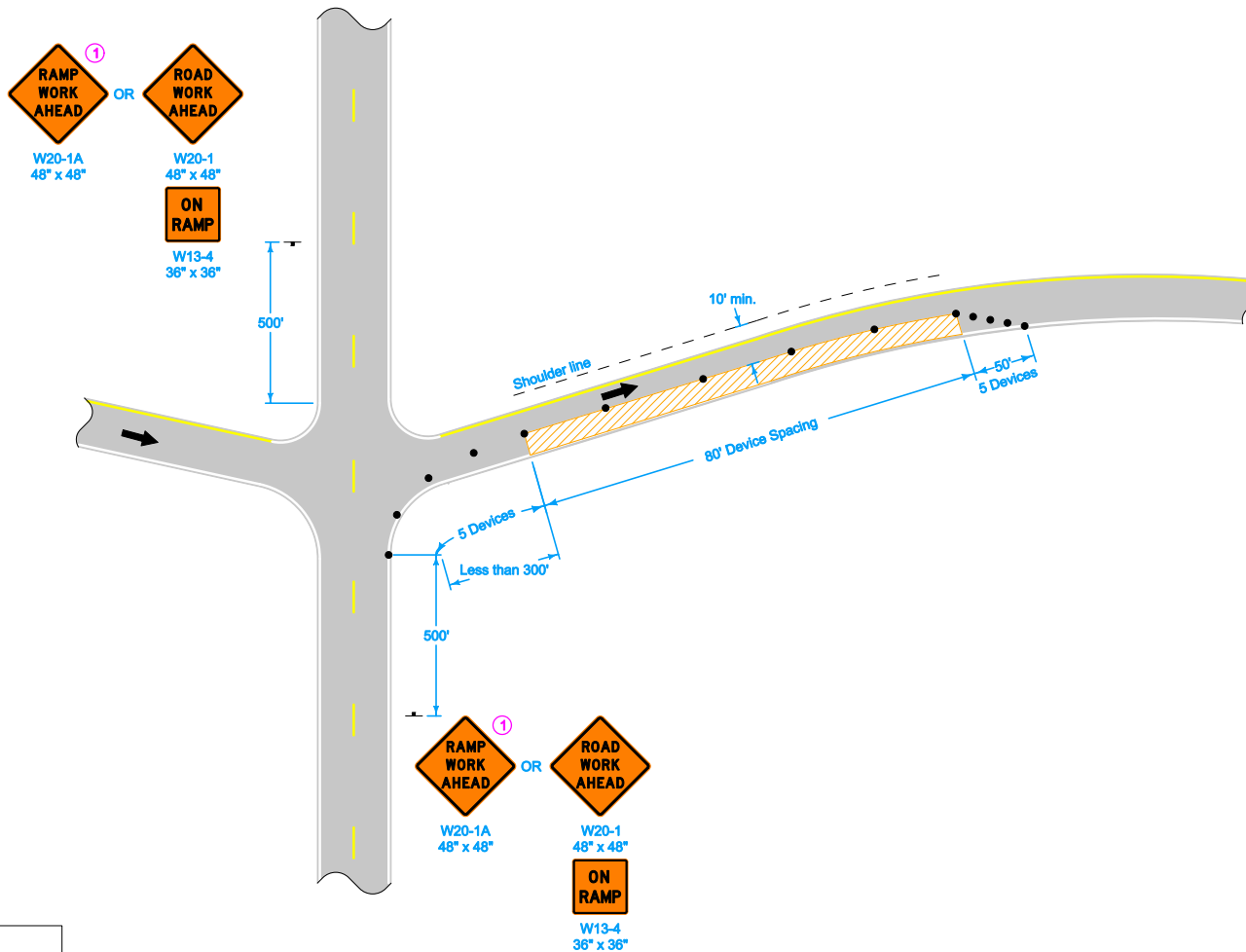


① Refer to SI-881 for sign details.

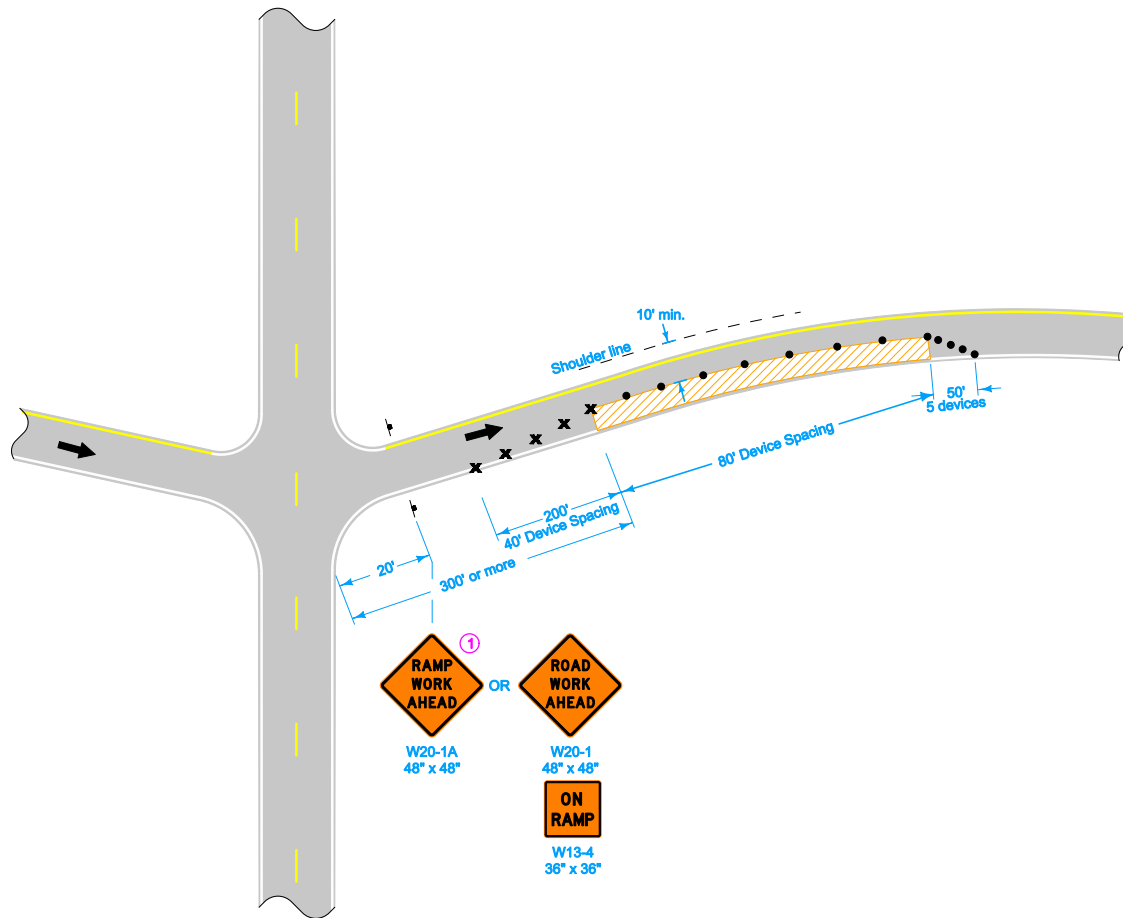


LEGEND	
	Traffic Sign
	42" Channelizer
	Direction of Traffic
	Work Area

Possible Contract Item:
Traffic Control

	REVISION 2 04-17-12	
	STANDARD ROAD PLAN TC-416 SHEET 1 of 4	
REVISIONS: Removed "or Vertical Panel" from 42" Channelizer In Legend.		
APPROVED BY DESIGN METHODS ENGINEER <i>Deanna Maifeld</i>		
PARTIAL LANE CLOSURE ON RAMP		

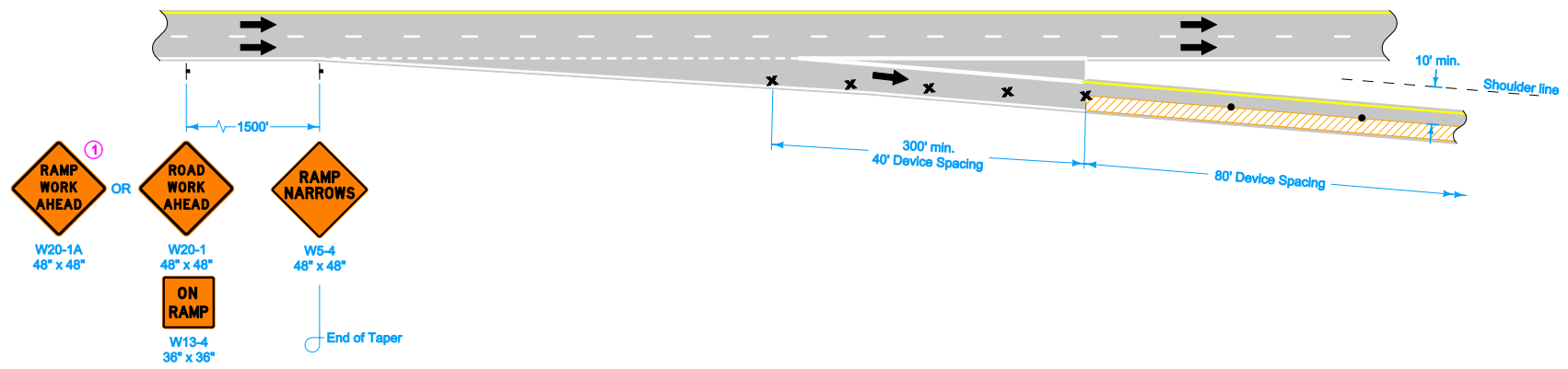
① Refer to SI-881 for sign details.



LEGEND	
x	Drum
⊢	Traffic Sign
•	42" Channelizer
←	Direction of Traffic
	Work Area

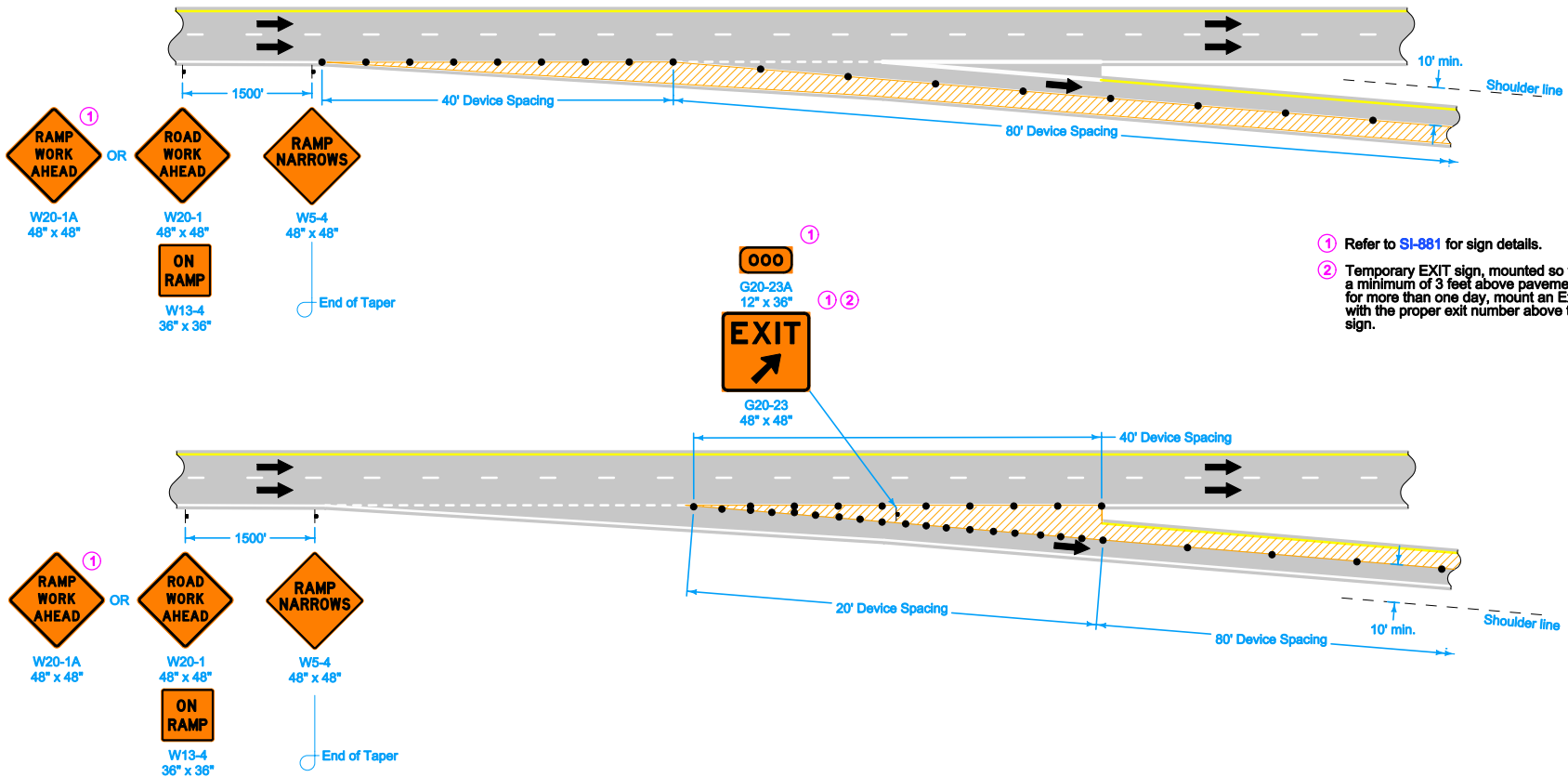
	REVISION
	2 04-17-12
STANDARD ROAD PLAN	TC-416
SHEET 2 of 4	
REVISIONS: Removed "or Vertical Panel" from 42" Channelizer In Legend.	
<i>Deanna Maifeld</i> APPROVED BY DESIGN METHODS ENGINEER	
PARTIAL LANE CLOSURE ON RAMP	

① Refer to SI-881 for sign details.



LEGEND	
x	Drum
↑	Traffic Sign
•	42" Channelizer
←	Direction of Traffic
▨	Work Area

	REVISION
	2 04-17-12
STANDARD ROAD PLAN	TC-416
SHEET 3 of 4	
REVISIONS: Removed "or Vertical Panel" from 42" Channelizer In Legend.	
<i>Deanna Maifeld</i> APPROVED BY DESIGN METHODS ENGINEER	
PARTIAL LANE CLOSURE ON RAMP	



- ① Refer to SI-881 for sign details.
- ② Temporary EXIT sign, mounted so that bottom of sign is a minimum of 3 feet above pavement surface. If in place for more than one day, mount an Exit Number Panel with the proper exit number above the temporary EXIT sign.

LEGEND	
	Traffic Sign
	42" Channelizer
	Direction of Traffic
	Work Area

 Iowa Department of Transportation	REVISION
	2 04-17-12
STANDARD ROAD PLAN	TC-416
SHEET 4 of 4	
REVISIONS: Removed "or Vertical Panel" from 42" Channelizer In Legend.	
<i>Deanna Maifield</i> APPROVED BY DESIGN METHODS ENGINEER	
PARTIAL LANE CLOSURE ON RAMPS	