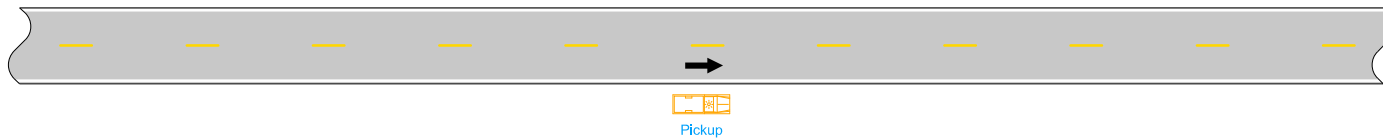


Do not allow work to interfere with the flow of traffic.

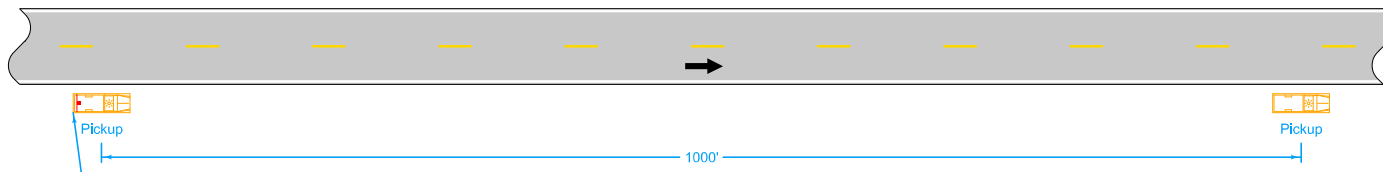
When parked, locate vehicles as far from the open traffic lane as possible. Entrances and driveways should be used whenever appropriate.

Equip all vehicles with an amber revolving light or amber strobe light.

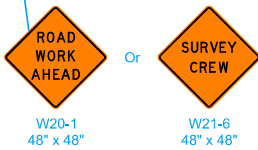
① For work lasting longer than one hour, refer to [TC-202](#) or [TC-402](#).



VEHICLE STOPPED ON SHOULDER FOR LESS THAN ONE HOUR ①



SLOW-MOVING OPERATION



LEGEND	
	Traffic Sign
	Direction of Traffic

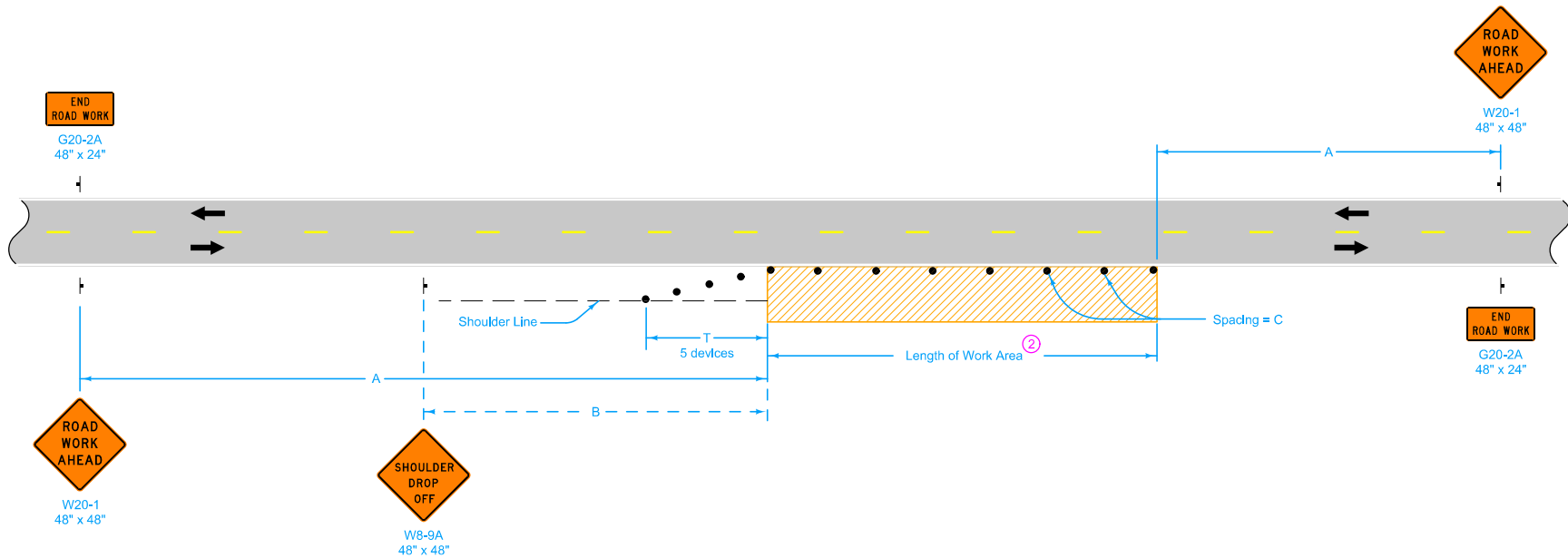
Possible Contract Item:
Traffic Control

 Iowa Department of Transportation	REVISION
	2 04-16-13
	TC-1
STANDARD ROAD PLAN	
SHEET 1 of 1	

REVISIONS: Modified note concerning amber Vehicle Warning Light.

Deanna Maifield
APPROVED BY DESIGN METHODS ENGINEER

**WORK NOT AFFECTING TRAFFIC
(TWO-LANE OR MULTI-LANE)**



LEGEND	
	Traffic Sign
	42" Channelizer
	Work Area
	Direction of Traffic

SPEED LIMIT (mph)	A	B	C ^②	T
35 or less	500'	250'	40'	100'
40 - 45	700'	350'	80' ^①	200'
50 or greater	1000'	500'	100' ^①	200'

When a pavement edge drop-off exists, install a SHOULDER DROP-OFF sign.

No pavement edge drop-offs greater than pavement depth will be allowed during non-working hours.

Shoulder edge drop-offs shall be mitigated according to Article 1107.08.L2 of the Standard Specifications.

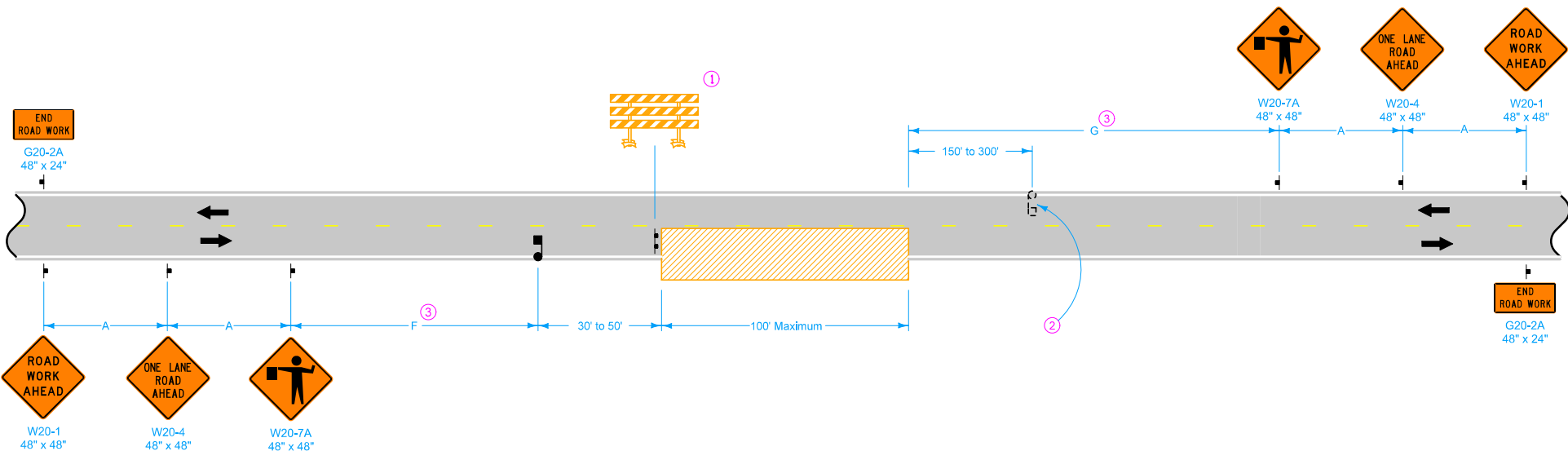
For work lasting less than one hour, refer to TC-1.

^① When the length of a pavement edge drop-off is 1000 feet or less, the temporary fillet requirement of Article 1107.08 of the Standard Specifications does not apply. Reduce channelizer spacing to 40 feet.

^② For work areas less than 200 feet long, use channelizers spaced at 20 foot centers or use a vehicle with an amber revolving light or amber strobe light.

Possible Contract Item:
Traffic Control

	REVISION
	8 04-21-15
	TC-202
STANDARD ROAD PLAN	
SHEET 1 of 1	
<small>REVISIONS: Modified general notes, changed title and replaced the DOT logo in the title block with the new version.</small>	
<small>APPROVED BY DESIGN METHODS ENGINEER</small>	
WORK WITHIN 15 FT OF TRAVELED WAY	



LEGEND

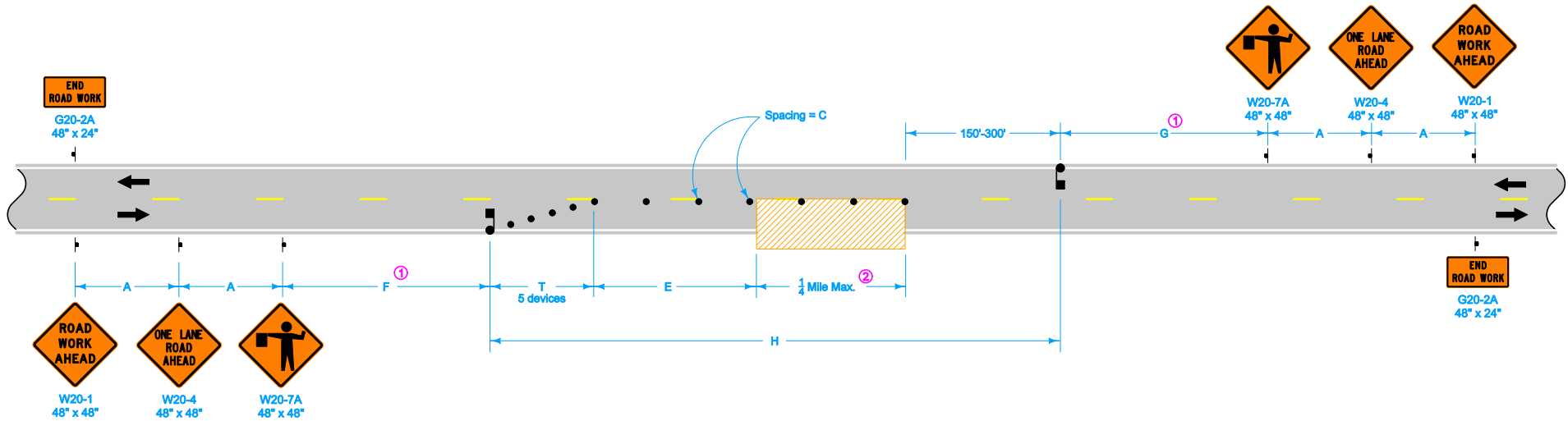
- Traffic Sign
- Flagger
- Work Area
- Type III Barricade
- Direction of Traffic

SPEED LIMIT (mph)	A	F and G Range ^③	F + G Max.
35 or less	250'	250'-3250'	3500'
40 - 45	350'	350'-3350'	3700'
50 or greater	500'	500'-3500'	4000'

- ① A vehicle with an amber revolving light or amber strobe light may be substituted for the Type III barricade.
- ② Provide a second flagger if:
 The flagger's view of approaching traffic in the open lane is less than 1/4 mile or the work site is in an area of restricted sight distance (such as a "No Passing" zone); or
 Excessive traffic delays are encountered.
- ③ F and G distances are to remain as near minimum values as work permits. However, to be able to move the work area without moving the advance signing, F and G distances may be varied within the limits of the table. Maximum movement can be achieved by setting one F or G value at the minimum and the other value at its maximum.

Possible Contract Items:
 Flaggers
 Traffic Control

 Iowa Department of Transportation	REVISION
	4 04-16-13
STANDARD ROAD PLAN	TC-212
REVISIONS: Modified circle note 1.	SHEET 1 of 1
 <small>APPROVED BY DESIGN METHODS ENGINEER</small>	
SPOT LOCATION LANE CLOSURE WITH FLAGGERS	



LEGEND

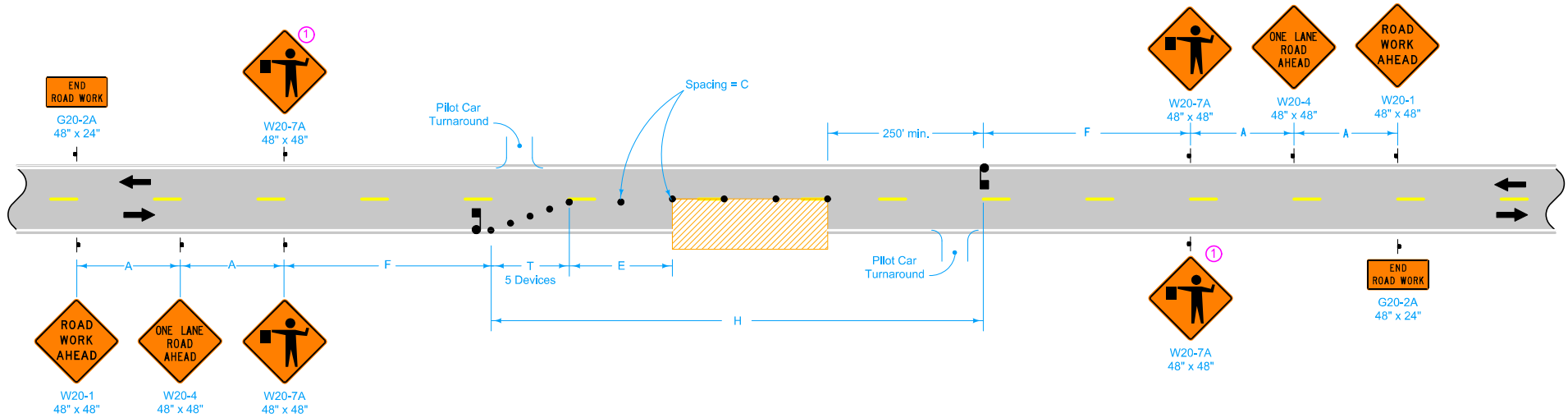
- Traffic Sign
- Flagger
- 42° Channelizer
- Work Area
- Direction of Traffic

SPEED LIMIT (mph)	A	C	E	F and G Range ^①	F + G Max.	H Max.	T
35 or less	250'	40'	0'-200'	500'-3000'	3500'	2000'	50'
40 - 45	350'	80'	0'-200'	700'-3000'	3700'	2000'	100'
50 or greater	500'	100'	200'-300'	1000'-3000'	4000'	2000'	100'

- ① Keep F and G distances as near to minimum values as work permits. However, to allow advancement of the work area without moving signs, F and G distances may be varied within the limits of the table. Maximum movement can be achieved by setting one F or G value at the minimum and the other value at its maximum.
- ② If length of work area exceeds 1/4 mile, use TC-214.

Possible Contract Items:
 Flaggers
 Traffic Control

Iowa Department of Transportation STANDARD ROAD PLAN	REVISION
	3 04-17-12
	TC-213
SHEET 1 of 1	
REVISIONS: Removed "or Vertical Panel" from 42° Channelizer In Legend.	
<i>Deanna Mifflin</i> APPROVED BY DESIGN METHODS ENGINEER	
LANE CLOSURE WITH FLAGGERS	



LEGEND

- Traffic Sign
- Flagger
- 42" Channelizer
- Work Area
- Direction of Traffic

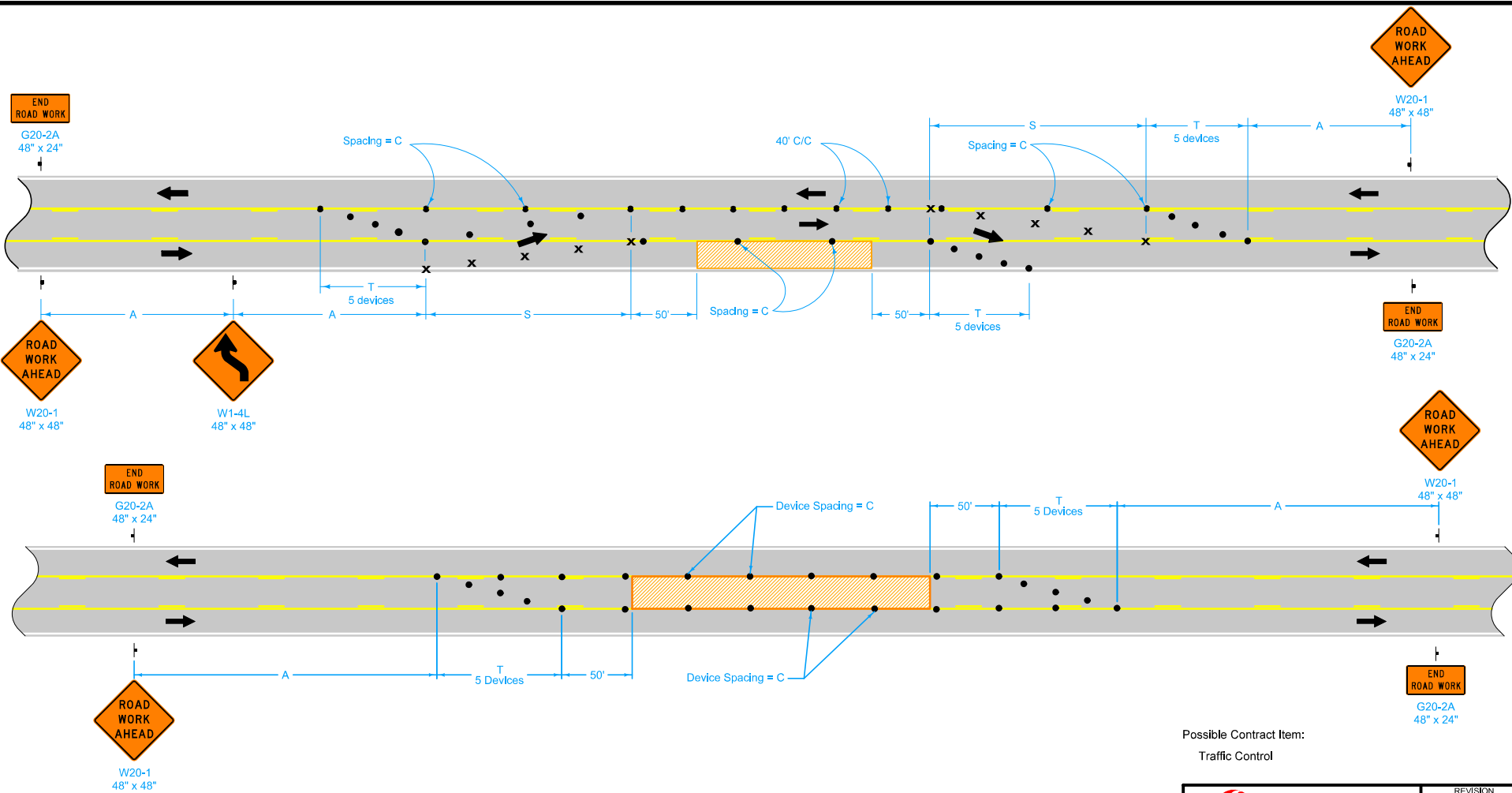
SPEED LIMIT (mph)	ADT	A	C	E	F	H max. ^②	T
35 or less	up to 2,500	250'	40'	0'-200'	500'	2.5 mi.	50'
	2,500 - 5,000	250'	40'	0'-200'	500'	2.0 mi.	50'
	more than 5,000	500'	40'	0'-200'	1000'	1.5 mi.	50'
40 - 45	up to 2,500	350'	80'	0'-200'	700'	2.5 mi.	100'
	2,500 - 5,000	350'	80'	0'-200'	700'	2.0 mi.	100'
	more than 5,000	700'	80'	0'-200'	1400'	1.5 ml.	100'
50 or greater	up to 2,500	500'	160'	200'-300'	1000'	2.5 mi.	100'
	2,500 - 5,000	500'	160'	200'-300'	1000'	2.0 mi.	100'
	more than 5,000	1000'	160'	200'-300'	2000'	1.5 ml.	100'

^① Sign optional for ADT less than 5,000.

^② In rural areas, as work activity nears the downstream limits of dimension H, the lane closure may be extended up to 1.0 mile beyond the maximum distance, H, shown in the table. After the traffic control devices have been placed to extend the closure and after work activity has progressed, the advanced signing and devices at the beginning of the traffic control zone should be moved downstream so that the H distance is once again within the limits shown in the table. This one-mile extension will not be allowed during any peak traffic hours listed in the contract documents.

Possible Contract Items:
 Flagger
 Pilot Car
 Traffic Control

	REVISION
	5 04-16-13
STANDARD ROAD PLAN	TC-214
SHEET 1 of 1	
<small>REVISIONS: Modified note 2 and changed the centerline device spacing from 100' to 160' in column C of the table.</small>	
<i>Deanna Mufson</i> <small>APPROVED BY DESIGN METHODS ENGINEER</small>	
LANE CLOSURE WITH FLAGGERS FOR USE WITH PILOT CAR	



LEGEND

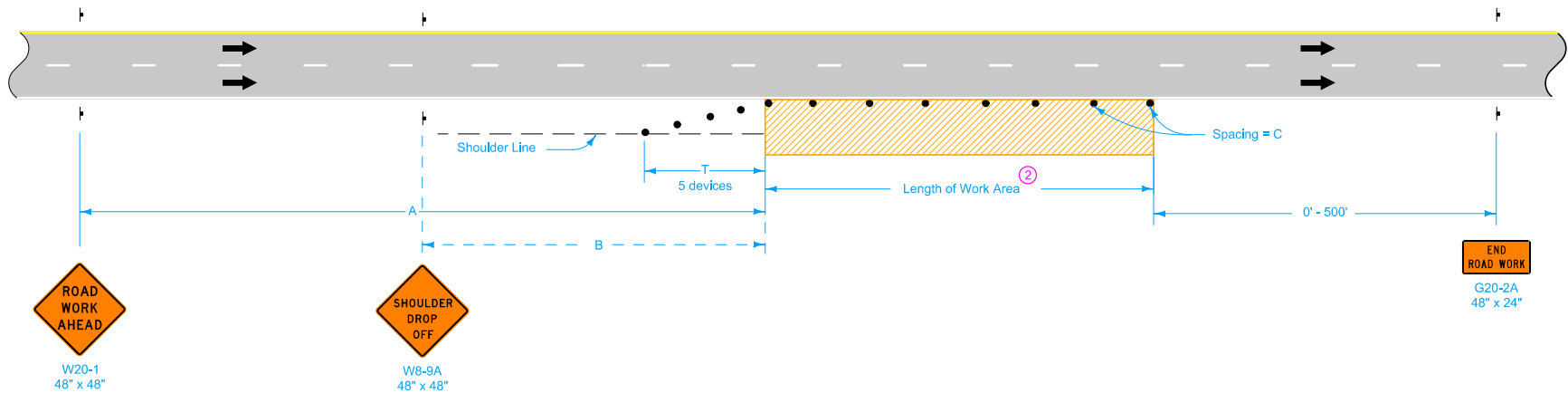
- 42" Channelizer
- ⊗ Drum ^①
- ⊣ Traffic Sign
- ▨ Work Area
- ← Direction of Traffic

SPEED LIMIT (mph)	A	C	D	S	T
25 or less	100'	40'	25'	100'	50'
30 - 35	250'	40'	30'	120'	50'
40 - 45	350'	80'	40'	280'	100'
50 or greater	500'	100'	50'	350'	100'

① Spacing = D for all drums.

Possible Contract Item:
Traffic Control

<p>Iowa Department of Transportation</p> <p>STANDARD ROAD PLAN</p> <p>REVISIONS: Added Information from TC-030 and changed title.</p> <p><i>Brian Smith</i> APPROVED BY DESIGN METHODS ENGINEER</p>	<p>REVISION</p> <p>4 10-15-13</p>
	<p>TC-228</p> <p>SHEET 1 of 1</p>
<p>LANE CLOSURE INVOLVING TWLTL</p>	



When a pavement edge drop-off exists, install a SHOULDER DROP-OFF sign.

No pavement edge drop-offs greater than pavement depth will be allowed during non-working hours.

Shoulder edge drop-offs shall be mitigated according to Article 1107.08.L2 of the Standard Specifications.

For work lasting less than one hour, refer to TC-1.

Possible Contract Item:
Traffic Control

LEGEND

- Traffic Sign
- 42" Channelizer
- Work Area
- Direction of Traffic

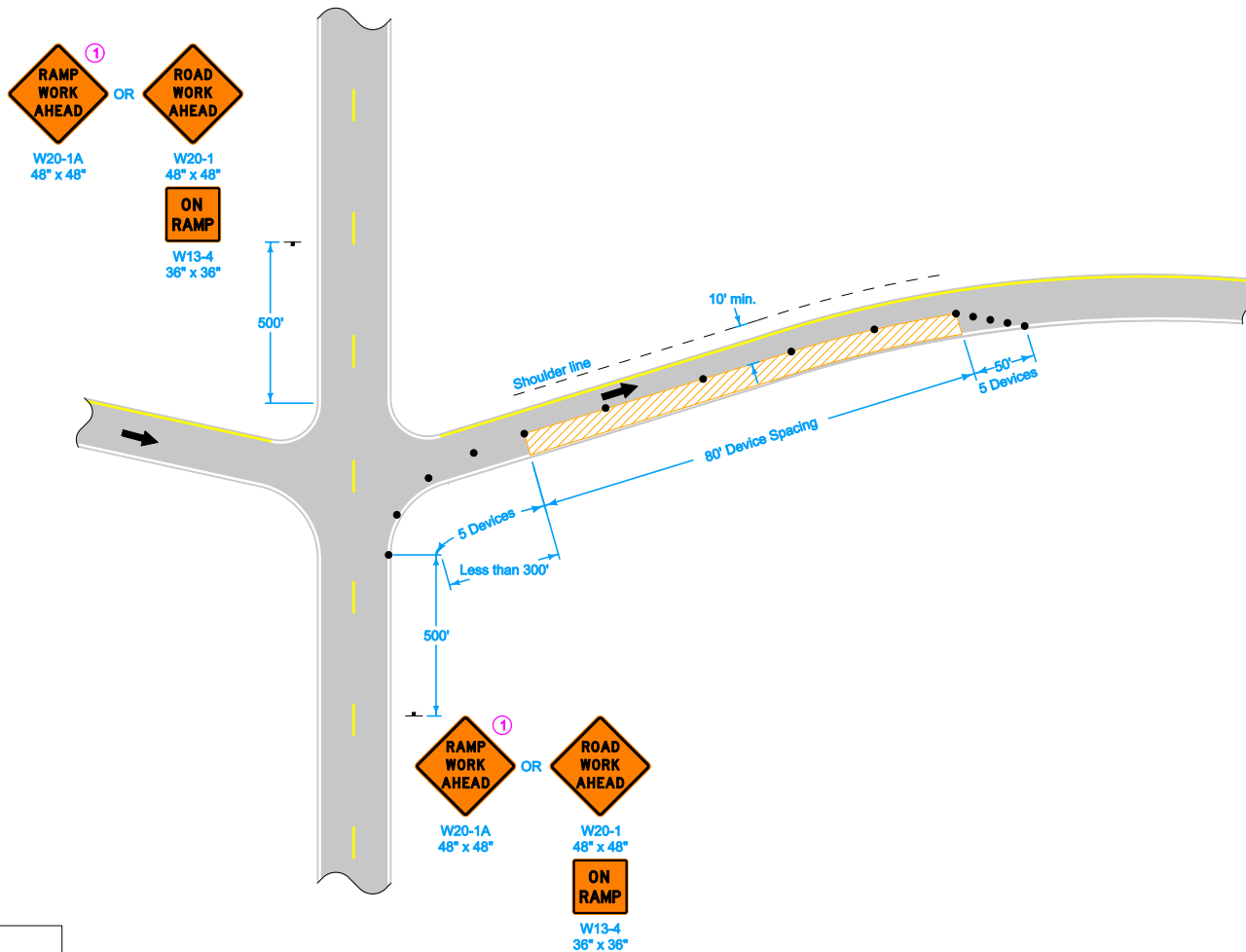
SPEED LIMIT (mph)	A	B	C ^②	T
40 or less	500'	250'	40'	100'
45 - 50	700'	350'	80' ^①	200'
55 - 60	1500'	500'	100' ^①	200'
65 - 70	1500'	500'	100' ^①	230'

^① When the length of a pavement edge drop-off is 1000 feet or less, the temporary fillet requirement of Article 1107.08 of the Standard Specifications does not apply. Reduce channelizer spacing to 40 feet.

^② For work areas less than 200 feet long, use channelizers spaced at 20 foot centers or use a vehicle with an amber revolving light or amber strobe light.

STANDARD ROAD PLAN	REVISION 8 04-21-15
	TC-402
	SHEET 1 of 1
REVISIONS: Modified general notes, changed title and replaced the DOT logo in the title block with the new version.	
<small>APPROVED BY DESIGN METHODS ENGINEER</small>	
WORK WITHIN 15 FT OF TRAVELED WAY	

① Refer to SI-881 for sign details.

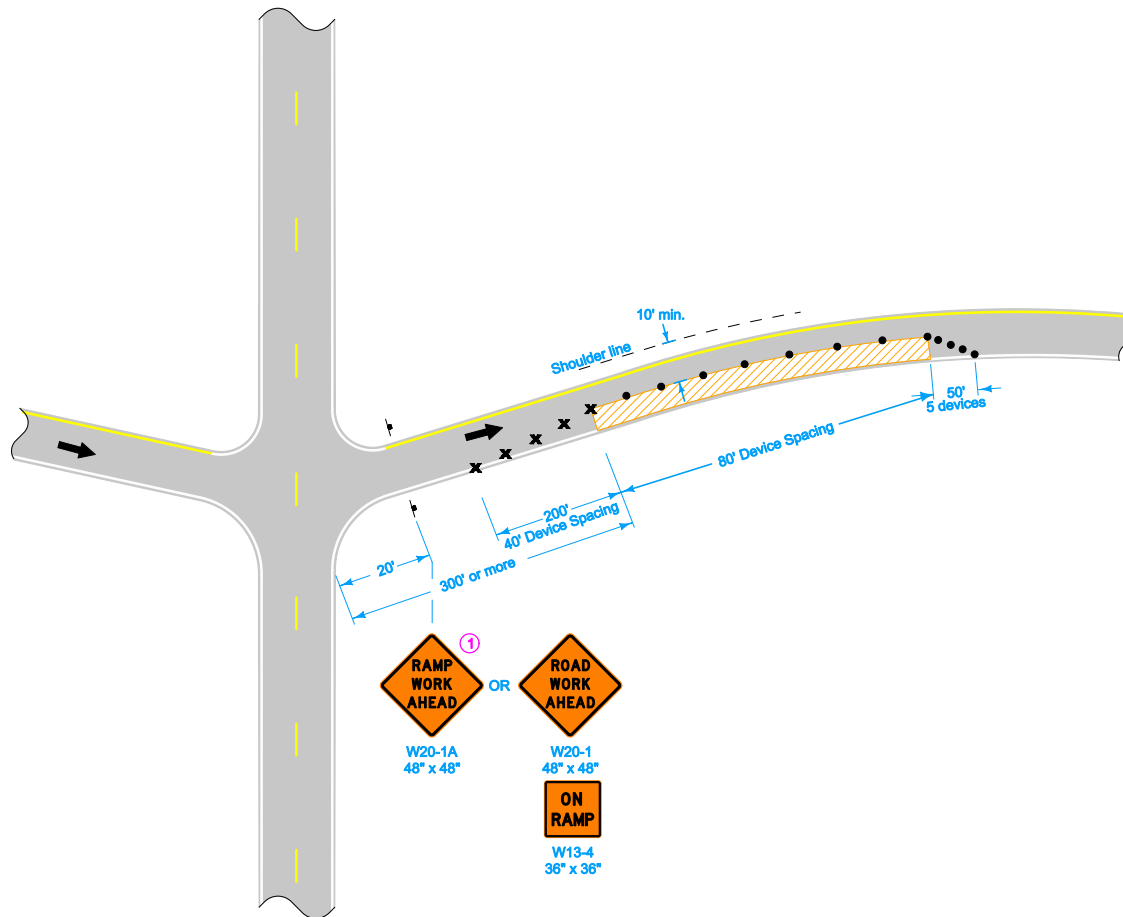



LEGEND	
	Traffic Sign
	42" Channelizer
	Direction of Traffic
	Work Area


Possible Contract Item:
Traffic Control

	REVISION 2 04-17-12	
	STANDARD ROAD PLAN TC-416 SHEET 1 of 4	
REVISIONS: Removed "or Vertical Panel" from 42" Channelizer In Legend.		
APPROVED BY DESIGN METHODS ENGINEER <i>Deanna Maifeld</i>		
PARTIAL LANE CLOSURE ON RAMP		

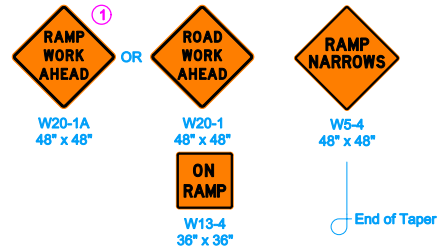
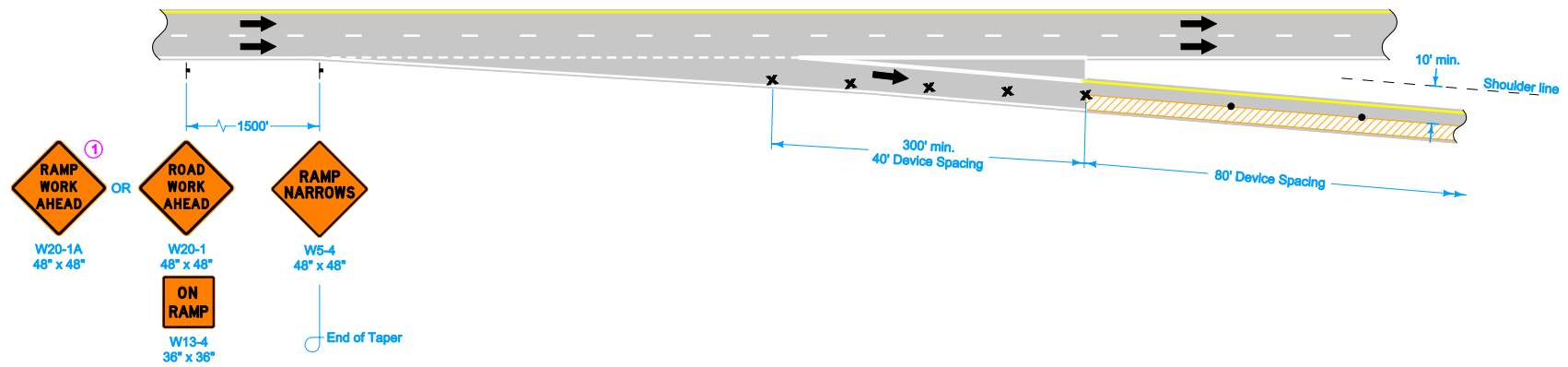
① Refer to SI-881 for sign details.



LEGEND	
x	Drum
⊢	Traffic Sign
•	42" Channelizer
←	Direction of Traffic
	Work Area

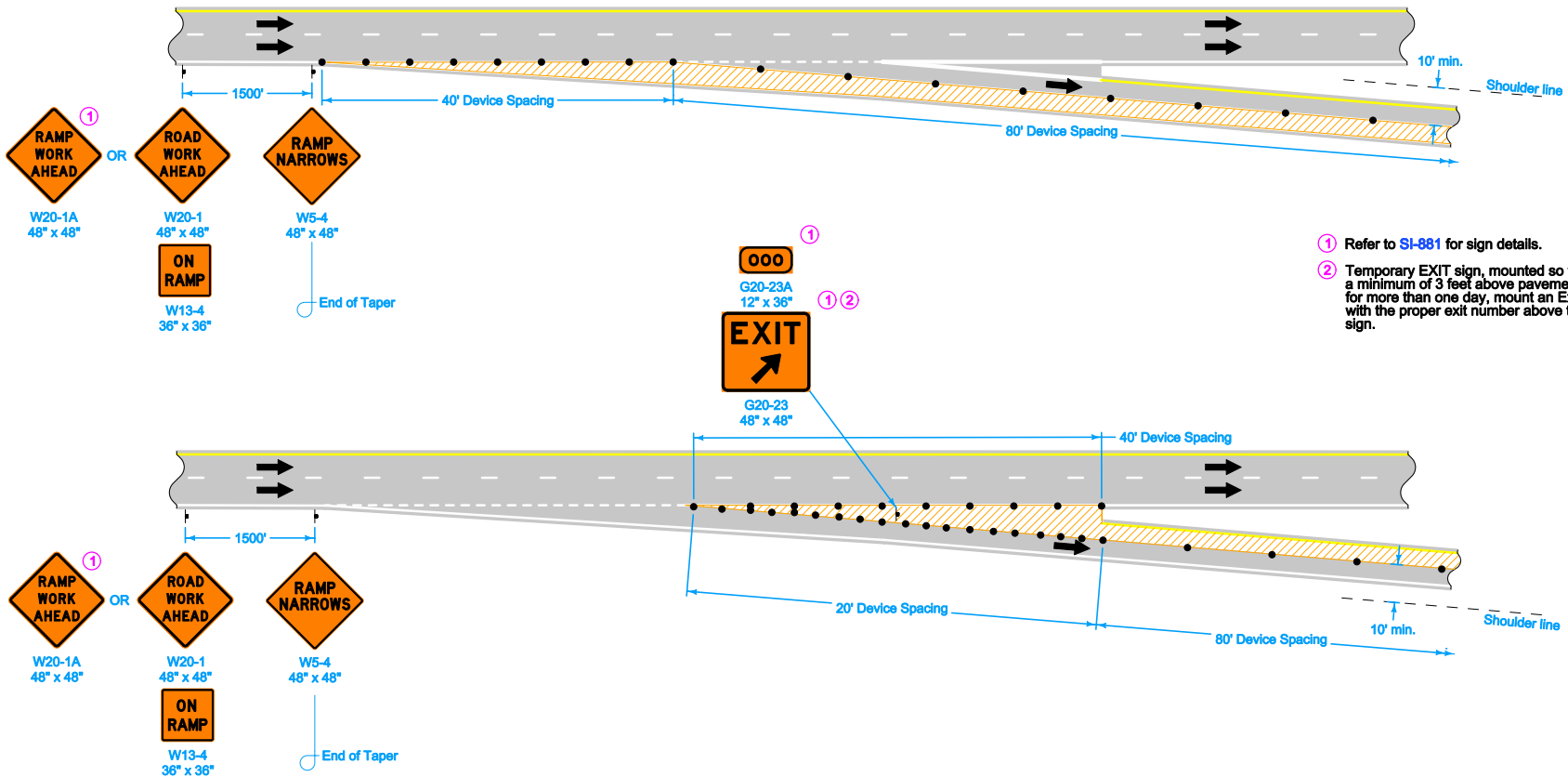
 Iowa Department of Transportation	REVISION	
	2	04-17-12
STANDARD ROAD PLAN	TC-416	
	SHEET 2 of 4	
<small>REVISIONS: Removed "or Vertical Panel" from 42" Channelizer In Legend.</small>		
<i>Deanna Maifeld</i> <small>APPROVED BY DESIGN METHODS ENGINEER</small>		
PARTIAL LANE CLOSURE ON RAMP		

① Refer to SI-881 for sign details.



LEGEND	
x	Drum
↑	Traffic Sign
•	42" Channelizer
←	Direction of Traffic
▨	Work Area

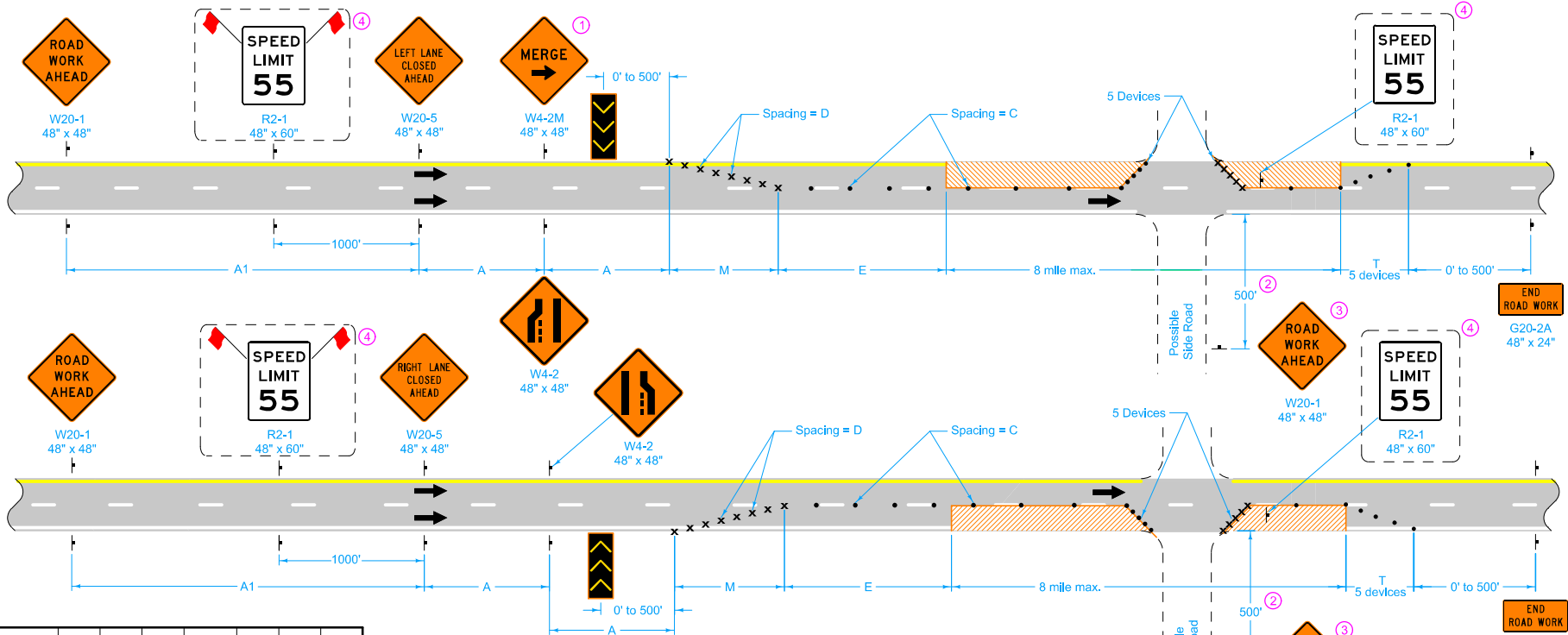
	REVISION
	2 04-17-12
STANDARD ROAD PLAN	TC-416
SHEET 3 of 4	
<small>REVISIONS: Removed "or Vertical Panel" from 42" Channelizer In Legend.</small>	
<i>Deanna Maifeld</i> <small>APPROVED BY DESIGN METHODS ENGINEER</small>	
PARTIAL LANE CLOSURE ON RAMP	



- ① Refer to SI-881 for sign details.
- ② Temporary EXIT sign, mounted so that bottom of sign is a minimum of 3 feet above pavement surface. If in place for more than one day, mount an Exit Number Panel with the proper exit number above the temporary EXIT sign.

LEGEND	
	Traffic Sign
	42" Channelizer
	Direction of Traffic
	Work Area

 Iowa Department of Transportation	REVISION
	2 04-17-12
STANDARD ROAD PLAN	TC-416
SHEET 4 of 4	
REVISIONS: Removed "or Vertical Panel" from 42" Channelizer In Legend.	
<i>Deanna Maifield</i> APPROVED BY DESIGN METHODS ENGINEER	
PARTIAL LANE CLOSURE ON RAMPS	



SPEED LIMIT (mph)	A	C	D	E	M	T	A1
35 or less	250'	40'	35'	0'-200'	245'	50'	250'
40	500'	80'	40'	0'-300'	320'	50'	500'
45	700'	80'	45'	0'-400'	630'	100'	700'
50	700'	80'	45'	400'	630'	100'	700'
55 - 60	1000'	100'	55'	600'	770'	100'	2000'
65 - 70	1000'	100'	65'	700'	910'	100'	2000'

LEGEND

- Direction Of Traffic
- Traffic Sign
- Drum
- 42" Channelizer
- Arrow Board
- Work Area

When the Average Daily Traffic (ADT) exceeds 20,000 vehicles per day or when a traffic queue extends beyond the advanced signing, place RIGHT/LEFT LANE CLOSED 4 MILES and RIGHT/LEFT LANE CLOSED 2 MILES signs (W20-5) on both sides of the roadway 4 miles and 2 miles in advance of the lane closure, respectively, as appropriate.

Where there is a lane line drop-off or rise, do not allow traffic to cross over the drop-off or rise, except for ramp locations where a BUMP (W8-1) sign is placed.

Lane line drop-offs greater than a nominal 4 inches are not allowed during non-working hours.

- ① Refer to SI-881 for sign details.
- ② Where side road speed limit is 40 mph or less, a distance of 200 feet is allowed.
- ③ Place a ROAD WORK AHEAD sign on the opposite side of the intersection in a similar location.
- ④ For roadways with a posted speed limit of 60 mph or greater before road work:
 - Place SPEED LIMIT 55 signs prior to the lane closure as shown.
 - When the length of closure is greater than 1 mile, install SPEED LIMIT 55 signs in the closed lane at 1-mile intervals.
 - Remove or cover all existing signs that conflict with 55 mph speed limit while 55 mph speed limit is in effect.

Possible Contract Item:
Traffic Control

Iowa Department of Transportation

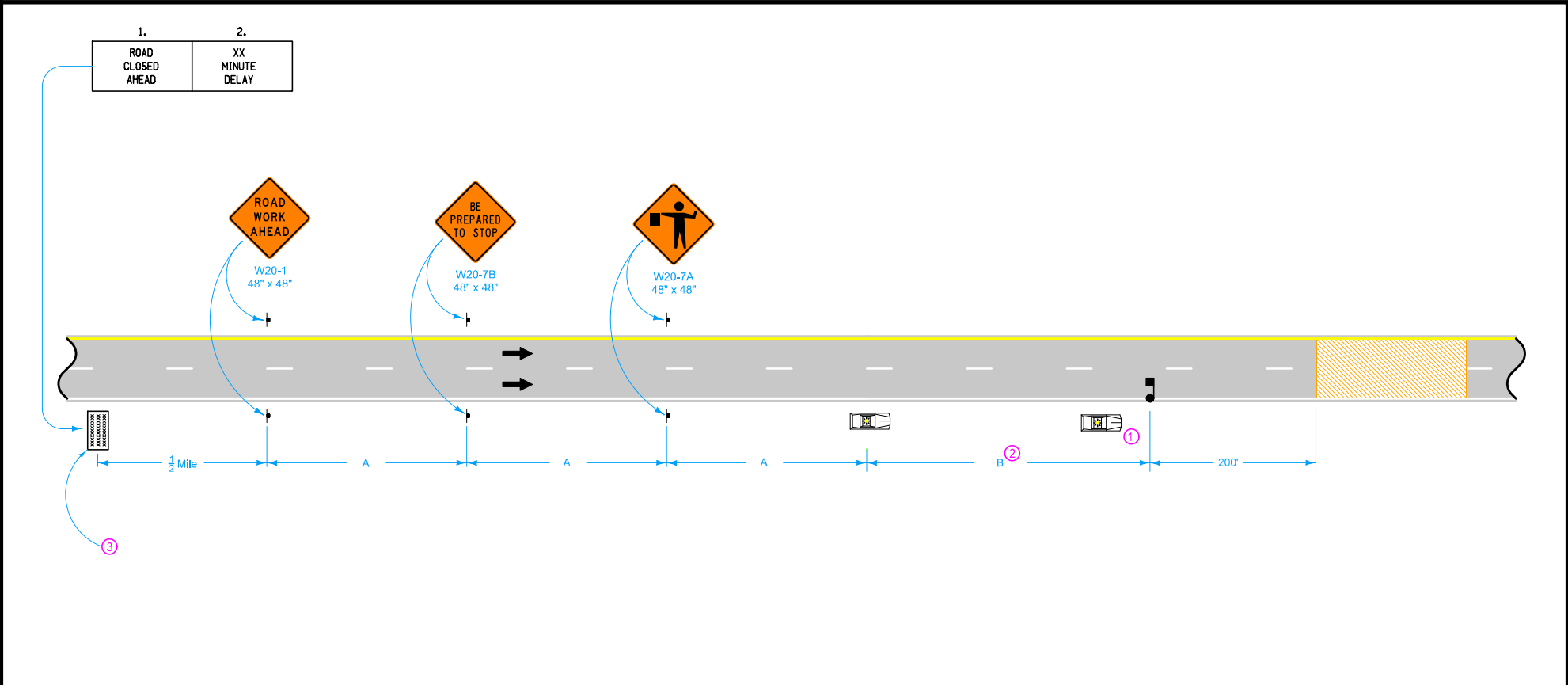
STANDARD ROAD PLAN

REVISIONS: Clarified lane line drop-off in the general notes.

Brian Smith
APPROVED BY DESIGN METHODS ENGINEER

LANE CLOSURE ON DIVIDED HIGHWAY

REVISION	8	10-15-13
TC-418		
SHEET 1 of 1		



1. ROAD CLOSED AHEAD	2. XX MINUTE DELAY
-------------------------------	-----------------------------

ROAD
WORK
AHEAD
W20-1
48" x 48"

BE
PREPARED
TO STOP
W20-7B
48" x 48"

W20-7A
48" x 48"

1/2 Mile

A

A

A

B ②

①

200'

LEGEND

- Traffic Sign
- Law Enforcement Vehicle
- Flagger
- Portable Dynamic Message Sign
- Work Area
- Direction of Traffic

SPEED LIMIT (mph)	A	B
35 or less	250'	250'
40 - 45	350'	350'
50 or greater	1000'	2500'

This layout is intended for a preplanned closure of 20 minutes or less.

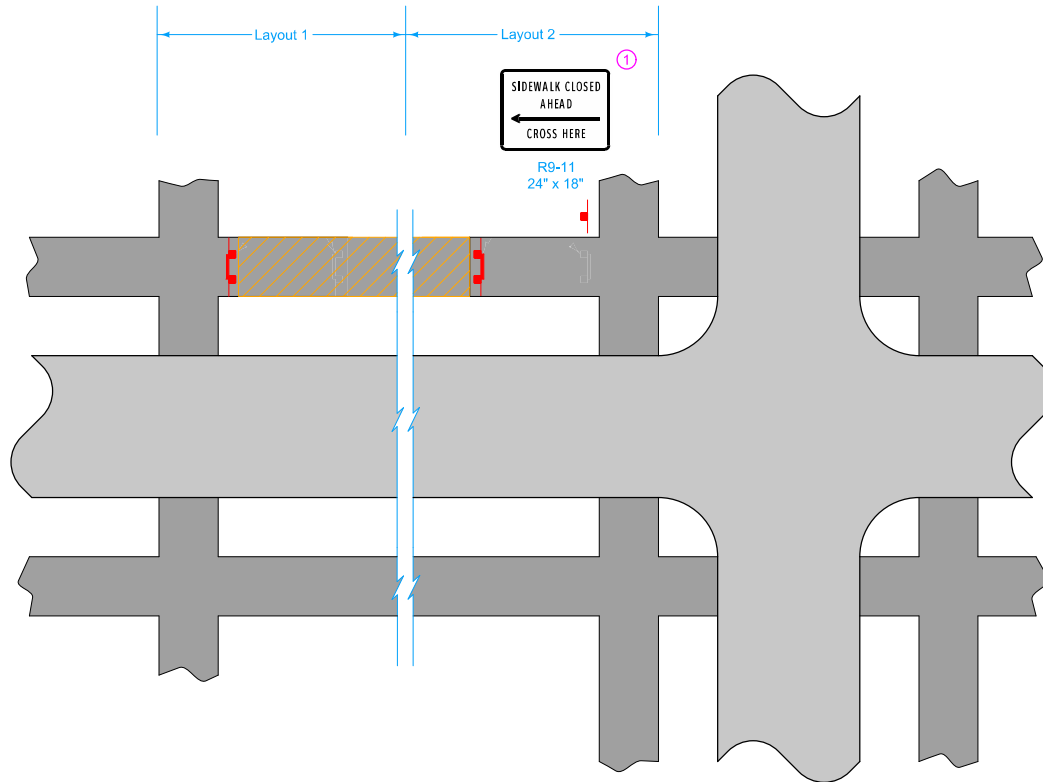
- ① A vehicle with an amber revolving light or amber strobe light may be substituted for leading law enforcement vehicle.
- ② This distance may be increased to provide adequate storage for stopped vehicles.
- ③ Optional for speed limits less than 55 mph.

Possible Contract Items:

- Flaggers
- Portable Dynamic Message Sign
- Traffic Control

	REVISION
	7 04-21-15
STANDARD ROAD PLAN	TC-451
SHEET 1 of 1	
REVISIONS: Corrected typo in title.	
APPROVED BY DESIGN METHODS ENGINEER	
TEMPORARY ROAD CLOSURE ON DIVIDED HIGHWAY	

① Omit "SIDEWALK CLOSED AHEAD CROSS HERE" (R9-11) sign when closure is at sidewalk intersection as shown in layout 1.



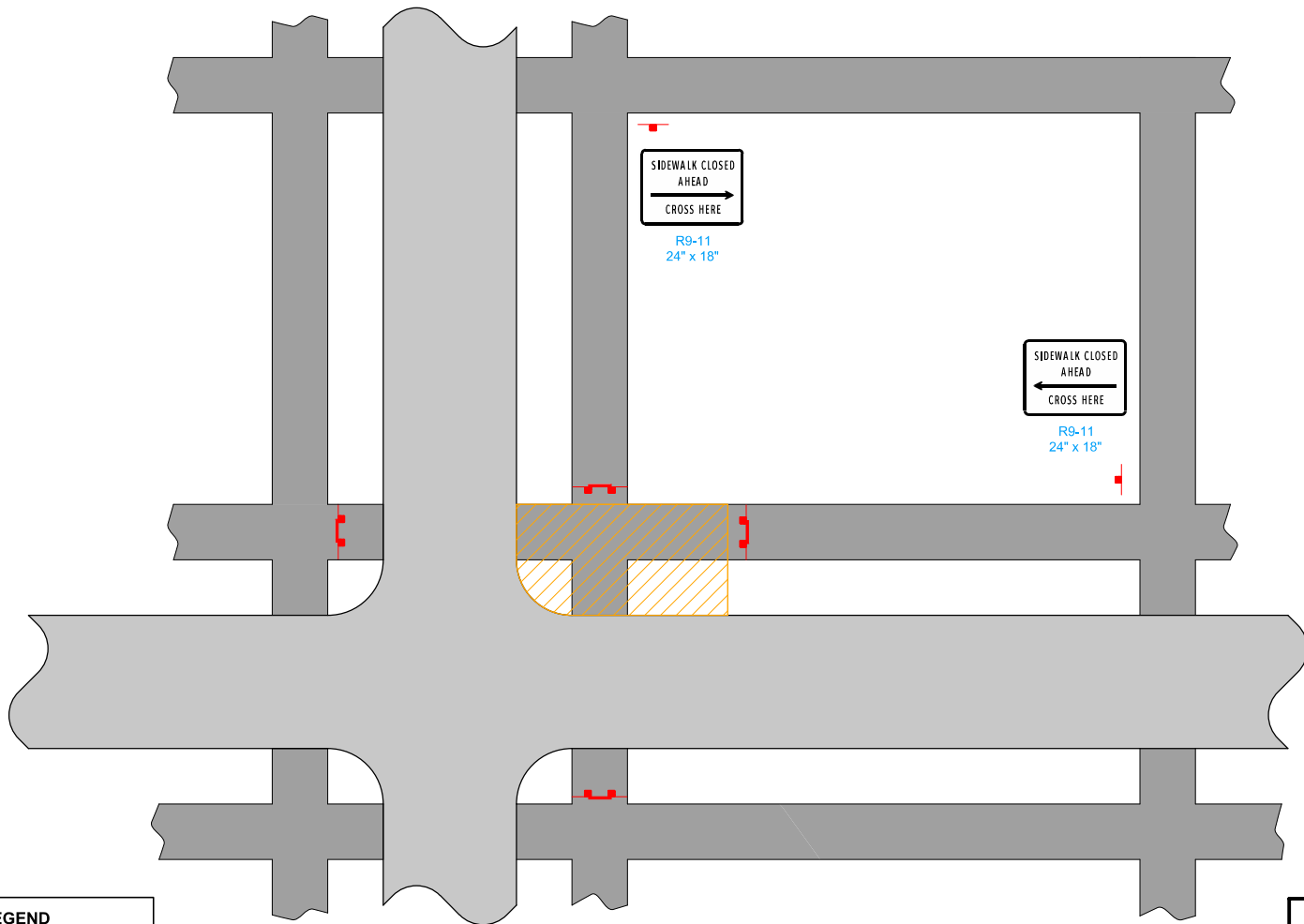
MID-BLOCK CLOSURE






LEGEND	
	Roadway
	Sidewalk
	Sign
	Pedestrian Path Closure
	Work Area

Possible Contract Item:
Traffic Control


Possible Tabulation:
113-2

	REVISION
	NEW 10-18-11
STANDARD ROAD PLAN	TC-601
REVISIONS: New	SHEET 1 of 2
 <small>APPROVED BY DESIGN METHODS ENGINEER</small>	
PEDESTRIAN DETOUR	

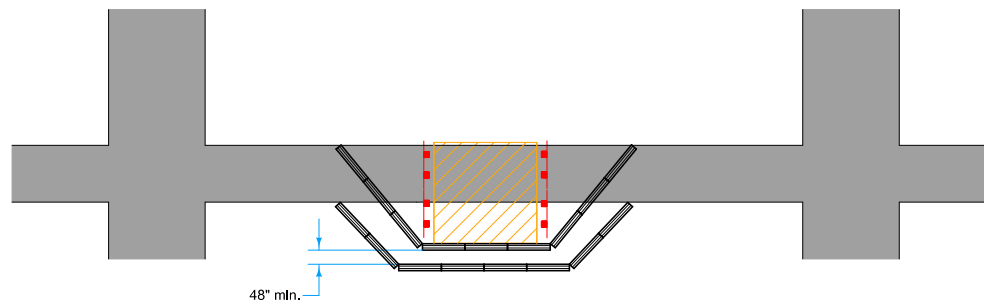


LEGEND	
	Roadway
	Sidewalk
	Sign
	Pedestrian Path Closure
	Work Area

CLOSURE AT INTERSECTION






 Iowa Department of Transportation	REVISION
	NEW 10-18-11
STANDARD ROAD PLAN	TC-601
REVISIONS: New	SHEET 2 of 2
<i>Deanna Mifflin</i> APPROVED BY DESIGN METHODS ENGINEER	
PEDESTRIAN DETOUR	


Acceptable materials and construction method for Pedestrian Channelizer will be defined in the contract documents. When Temporary Barrier Rail is specified as the Pedestrian Channelizer, Section 2528 of the Standard Specifications applies. For other types of Pedestrian Channelizers, the length of Pedestrian Channelizers installed will be measured in feet. Payment will be at the contract price per linear foot.



Possible Contract Items:
 Pedestrian Channelizer
 Temporary Barrier Rail
 Maintenance of Pedestrian Traffic

Possible Tabulation:
 113-3

LEGEND	
	Sidewalk
	Direction of Traffic
	Work Area
	Type III Barricade
	Pedestrian Channelizer

 Iowa Department of Transportation	REVISION	
	NEW	10-18-11
STANDARD ROAD PLAN	TC-602	
REVISIONS: New	SHEET 1 of 1	
<i>Deanna Miffield</i> <small>APPROVED BY DESIGN METHODS ENGINEER</small>		
SIDEWALK DIVERSION		