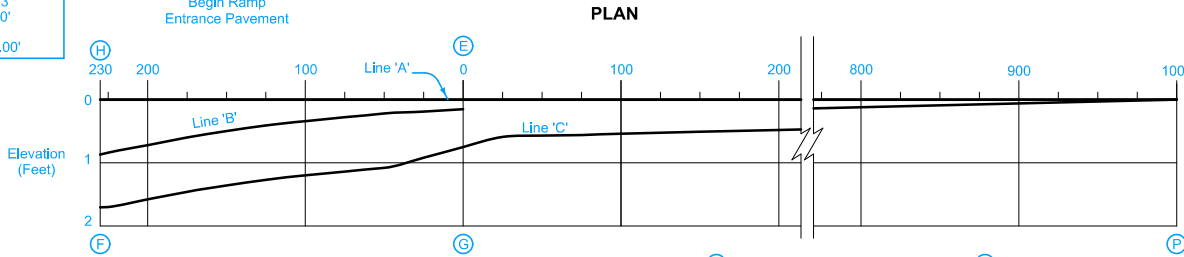
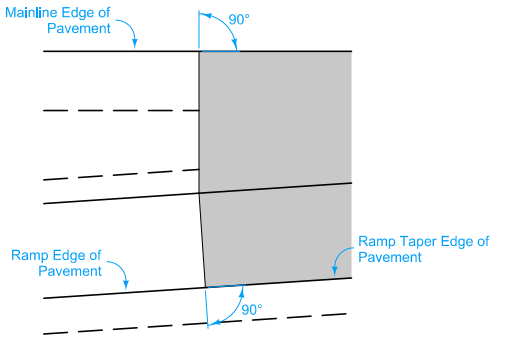


Pt. 'J' to Pt. 'G'
 $\Delta = 8^\circ 01' 17.07''$
 $T = 140.23'$
 $L = 280.00'$
 $E = 4.91'$
 $R = 2000.00'$



NOTE: The algebraic difference between profile grade for Ramp Base Line at (F) and relative profile grade of Mainline at (H) is 0.54%.



Construct ramp entrance pavement the same thickness as mainline pavement.

Ramp entrance pavement shown by shaded area is 1793 square yards.

For joint details, see PV-101

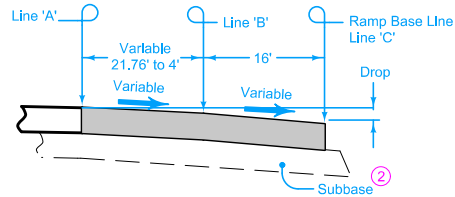
- ① For header construction details at the end of taper, see Typical 7101 or Typical 7102.
- ② Construct subbase for ramp entrance pavement the same thickness as mainline subbase.

PLAN

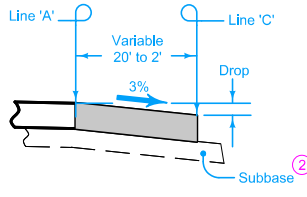
PROFILE

DETAIL A

| | | TABLE OF OFFSETS AND DROPS FOR 16' RAMP TAPER | | | | | | | | | | | | | | | | | | | | | | | |
|--|--------------|---|--------|--------|--------|--------|--------|-------|-------|-------|-------|------|---------------------|------|------|------|------|------|------|------|------|------|------|------|------|
| Distance From Point (E) Along Line 'A' (Ft.) | | 230 | 225 | 200 | 175 | 150 | 125 | 100 | 75 | 50 | 25 | 0 | 25 | 50 | 75 | 100 | 200 | 300 | 400 | 500 | 600 | 700 | 800 | 900 | 1000 |
| From Line 'A' To Line 'B' | Offset (Ft.) | 21.76 | 21.10 | 17.95 | 15.11 | 12.59 | 10.38 | 8.48 | 6.90 | 5.62 | 4.66 | 4.0 | | | | | | | | | | | | | |
| | Slope (%) | Constant 4.0% Slope | | | | | | | | | | | 3.78 | | | | | | | | | | | | |
| | Drop (Ft.) | 0.87 | 0.84 | 0.72 | 0.60 | 0.50 | 0.42 | 0.34 | 0.28 | 0.22 | 0.19 | 0.15 | | | | | | | | | | | | | |
| From Line 'B' To Line 'C' | Offset (Ft.) | Constant 16.0' Offset | | | | | | | | | | | | | | | | | | | | | | | |
| | Slope (%) | 5.40 | 5.40 | 5.40 | 5.40 | 5.40 | 5.40 | 5.40 | 5.40 | 5.40 | 4.58 | 3.78 | | | | | | | | | | | | | |
| | Drop (Ft.) | 0.86 | 0.86 | 0.86 | 0.86 | 0.86 | 0.86 | 0.86 | 0.86 | 0.86 | 0.73 | 0.60 | | | | | | | | | | | | | |
| From Line 'A' To Line 'C' | Offset (Ft.) | | | | | | | | | | | | 19.5 | 19.0 | 18.5 | 18.0 | 16.0 | 14.0 | 12.0 | 10.0 | 8.0 | 6.0 | 4.0 | 2.0 | 0.0 |
| | Slope (%) | | | | | | | | | | | | Constant 3.0% Slope | | | | | | | | | | | | |
| | Drop (Ft.) | 1.73 | 1.70 | 1.58 | 1.46 | 1.36 | 1.28 | 1.20 | 1.14 | 1.08 | 0.92 | 0.75 | 0.59 | 0.57 | 0.56 | 0.54 | 0.48 | 0.42 | 0.36 | 0.30 | 0.24 | 0.18 | 0.12 | 0.06 | 0.0 |
| Distance From Point (G) Along Line 'C' (Ft.) | | 228.66 | 223.66 | 198.66 | 173.70 | 148.77 | 123.87 | 99.00 | 74.15 | 49.31 | 24.49 | 0.00 | | | | | | | | | | | | | |



SECTION A-A



SECTION B-B

| TABLE OF SHOULDER TRANSITION LENGTHS | | | |
|--------------------------------------|---|------|------|
| W ₁ | Shoulder Width beyond Edge of Mainline Pavement | | |
| | 12' | NA | 200' |
| 14' | 100' | 200' | NA |

NOTE: W₁ is the width of the outside lane to the Edge of Pavement.

STANDARD ROAD PLAN

REVISIONS: Extended the 15' transverse joint spacing on the mainline to the header for the centerline joint.

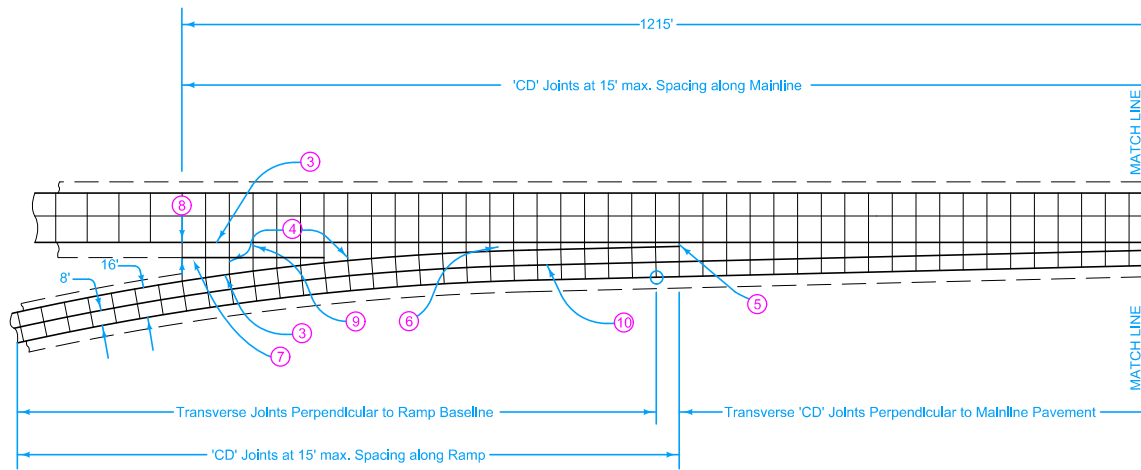
APPROVED BY DESIGN METHODS ENGINEER

ACCELERATION TAPER FOR 16' ENTRANCE RAMP

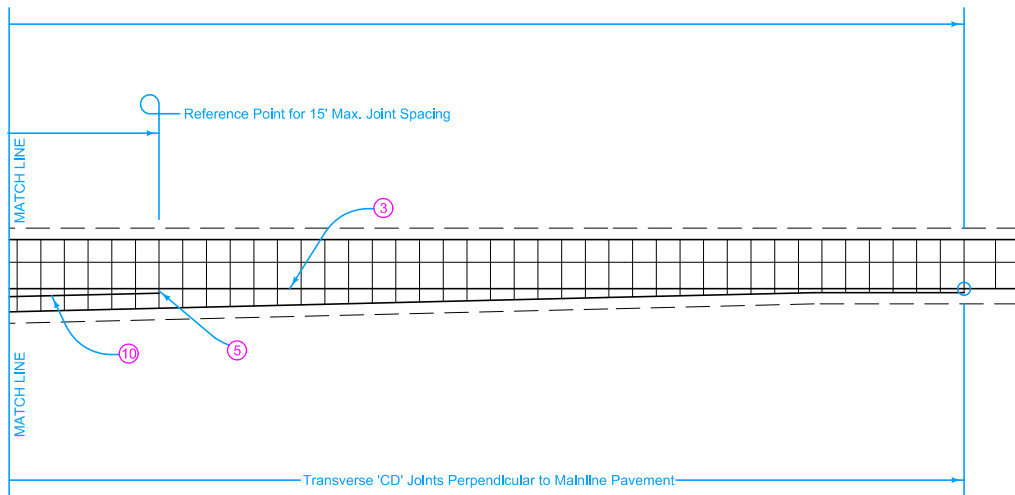
REVISION 4 10-16-18

PV-411

SHEET 1 of 2



- ③ 'BT-2' or 'KT-2' Joint.
- ④ 'C' Joint.
- ⑤ 'B' Joint. 2' minimum, 4' maximum.
- ⑥ Construct transverse joints on the entrance ramp taper perpendicular to the tapered edge where the gore area is greater than 4 feet.
- ⑦ 'C' Joint equal to mainline shoulder width.
- ⑧ 10' minimum, or equal to mainline shoulder width.
- ⑨ 'B' or 'C' Joint. 2' minimum. 4' maximum.
- ⑩ 'L-2' Joint.



16' ENTRANCE RAMP

| | |
|---|---------------|
| | REVISION |
| | 4 10-16-18 |
| STANDARD ROAD PLAN | PV-411 |
| SHEET 2 of 2 | |
| <small>REVISIONS: Extended the 15' transverse joint spacing on the mainline to the header for the centerline joint.</small> | |
| | |
| APPROVED BY DESIGN METHODS ENGINEER | |
| ACCELERATION TAPER FOR 16' ENTRANCE RAMP | |