



6601 Westown Pkwy, STE 200
West Des Moines, Iowa 50266
515-244-3500
fax 515-244-3599
www.sullivan-ward.com

direct: 515-247-4710
dpuckett@sullivan-ward.com

**Law Offices
Sullivan & Ward, P.C.**

John T. Ward
Louis R. Hockenber
Robert M. Holliday
Mark Landa
Dennis L. Puckett
Samantha J. Gronewald
Kyle A. Kruidenier
Michael J. Green
Elizabeth N. Overton
David J. Hellstern
[^]L. Chris Knauf
Amanda A. James

Retired
Michael P. Joynt
Richard R. Chabot
William W. Sullivan
[1919-1999]
John V. Donnelly
[1940-2010]
Also Admitted in:
[^]Nebraska

November 6, 2014

To: THE TELEPHONE LINE COMPANY
ELECTRIC COMPANY, RAILROAD COMPANY,
OR INDIVIDUAL ADDRESSED

(Scott County)

Dear Addressee:

Please be advised that on behalf of Rock Island Clean Line LLC, we are filing with the Iowa Utilities Board a Petition for Electric Transmission Line Franchise to erect, operate and maintain an electric transmission line in Scott County, Iowa, over the route as indicated on the enclosed map (which is the Exhibit B included with the Petition). This Petition is for a nominal ± 600 kilovolt ("kV"), high voltage, direct current ("HVDC") transmission line that will originate at a converter station in O'Brien County, Iowa (the ultimate west terminus), traverse Iowa approximately 370 miles, cross the Mississippi River near Princeton, Iowa, enter Illinois south of Cordova, Illinois, traverse Illinois for approximately 120 miles, and interconnect with the 765 kV transmission system of the PJM Interconnection, LLC ("PJM") at the Collins substation in Grundy County, Illinois. The HVDC transmission line will terminate at a converter station to be located in Channahon, Illinois (the ultimate east terminus). The enclosed map shows the portion of the route in Scott County. A separate Petition is being filed for each of the 16 Iowa Counties through which the proposed line will be routed.

Should you have any questions concerning the attached proposal, please notify this office or Elizabeth Conley, Manager, Rock Island Clean Line LLC, 510 E. Locust Street, Suite 200, Des Moines, Iowa 50309. Telephone: 1-877-907-8516.

Sincerely,

Sullivan & Ward, P.C.

/s/

Dennis L. Puckett

Enclosures

Exhibit F

Exhibit F Mailing List

ITC Midwest 123 5th St SE Cedar Rapids IA 52401	Alliance Pipeline 6385 Old Shady Oak Rd Ste 150 Eden Prairie MN 55344
Central Iowa Power Cooperative PO Box 2517 Cedar Rapids IA 52406-2517	Enterprise Products Operating LLC 1100 Louisian St Houston TX 77002
Interstate Power & Light - Alliant Energy 4902 N Biltmore Ave Ste 1000 Madison WI 53718	Northern Border Pipeline Company 717 Texas St Ste 2400 Houston TX 77002
Eastern Iowa Light & Power Cooperative 600 E 5th St Wilton IA 52778	OneOK OneOK Plaza, 100 W 5th St Tulsa OK 74103
MidAmerican Energy Company PO Box 4350 Davenport IA 52808-4350	Magellan Midstream Partners One Williams Center Tulsa OK 74172
Burlington Northern Santa Fe Railway 2650 Lou Menk Dr Fort Worth TX 76131	Canadian Pacific 7550 Ogden Dale RD SE Calgary AB T2C 4X9 Canada
CenturyLink 925 High St 9S9 Des Moines IA 50309	Central Scott Telephone Company 125 N 2nd St Eldridge IA 52748
Dixon Telephone Company 608 Davenport St Dixon IA 52745	Iowa Telecom 4001 Rodney Parham Rd Little Rock AR 72217
Paetec 1800 Old Pecos Trail Ste J Santa Fe NM 87505	Iowa Department of Natural Resources 502 E 9th St, Wallace State Office Bldg Des Moines IA 50319
Iowa Department of Transportation 800 Lincoln Way Ames IA 50010	US Army Corp of Engineers Rock Island District, Clock Tower Bldg PO Box 2004 Rock Island IL 61204
Scott County Conservation Department 14910 110th Ave Davenport IA 52804	Scott County Secondary Roads 500 W 4th St Davenport IA 52801

ITC Midwest
123 5th Street SE, Cedar Rapids, IA 52401

Electric Transmission Lines

- 2 -- Overhead 69,000v
- 2A -- Overhead 345,000v

Central Iowa Power Cooperative
P.O. Box 2517
Cedar Rapids, IA 52406-2517

Electric Transmission Lines

- 3 -- Overhead 69,000v
- 3A -- Overhead 161,000v

Interstate Power & Light - Alliant Energy
4902 N Biltmore Avenue, Suite 1000
Madison, WI 53718

Electric Distribution Lines

- 4 -- Overhead 7,200v
- 5 -- Overhead 12,470v

Eastern Iowa Light and Power Cooperative
600 E 5th Street, Wilton, IA 52778

Electric Distribution Lines

- 6 -- Overhead 7,200v
- 7 -- Overhead 12,470v

MidAmerican Energy Company
P.O. Box 4350, Davenport, IA 52808-4350

Electric Distribution Lines

- 8 -- Overhead 7,200v
- 9 -- Overhead 12,470v

Electric Transmission Lines

- 10 -- Overhead 69,000v
- 11 -- Overhead 161,000v

Alliance Pipeline
6385 Old Shady Oak Road
Suite 150
Eden Prairie, MN 55344

Underground Pipelines

- 12 -- Natural Gas Pipeline

**Enterprise Products
Operating LLC**
1100 Louisiana Street
Houston, TX 77002

Underground Pipelines

- 13 -- Natural Gas Pipeline

**Northern Border
Pipeline Company**
717 Texas Street, Suite 2400
Houston, TX 77002

Underground Pipelines

- 14 -- Natural Gas Pipeline

MidAmerican Energy Company
P.O. Box 4350
Davenport, IA 52808-4350

Underground Pipelines

- 15 -- Natural Gas Pipeline

ONEOK
ONEOK Plaza
100 West 5th Street
Tulsa, OK 74103

Underground Pipelines

- 16 -- Petroleum Pipeline

Magellan Midstream Partners
One Williams Center
Tulsa, OK 74172

Underground Pipelines

- 17 -- Petroleum Pipeline

**Electric Transmission Line to be Franchised
Rock Island Clean Line**
1001 McKinney, Ste 700, Houston, TX 77002

Proposed Electric Transmission Line

- 1 -- Overhead +/-600,000v

Water Distribution Companies

None

Railroad Companies

Burlington Northern Santa Fe Railway
2650 Lou Menk Drive
Fort Worth, TX 76131

Canadian Pacific
7550 Ogden Dale Road SE, Calgary
AB T2C 4X9, Canada

Communications Companies

Central Scott Telephone Company
125 N 2nd Street, PO Box 260
Eldridge, IA 52748

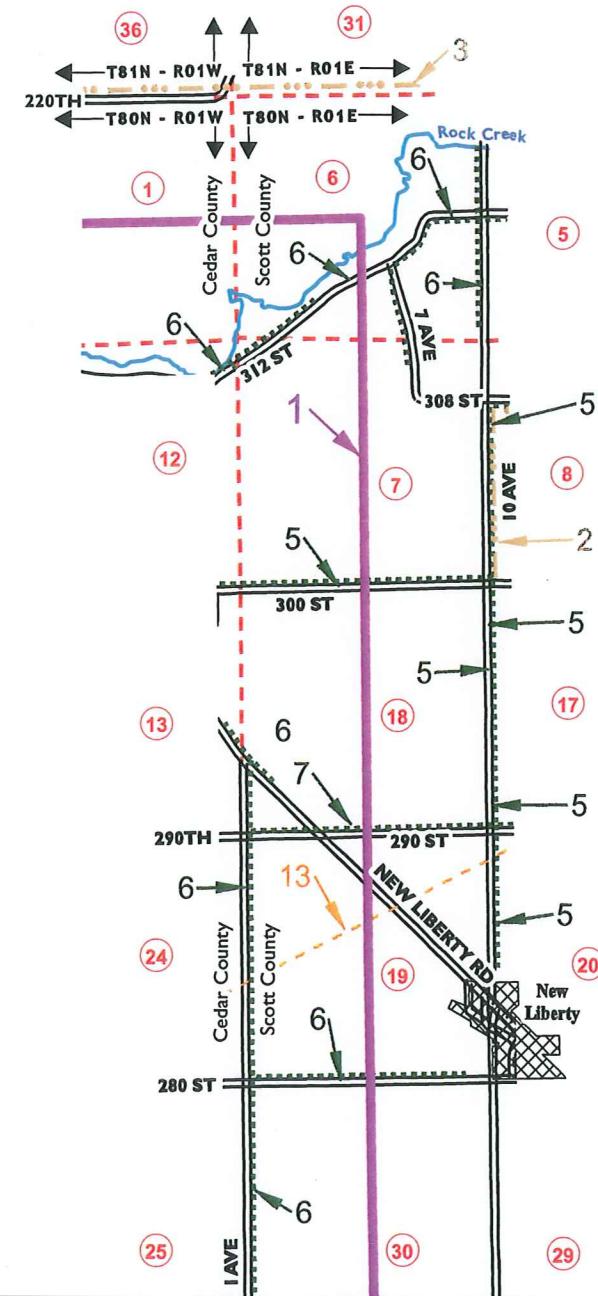
CenturyLink
925 W High Street, 9S9
Des Moines, IA 50309

Dixon Telephone Company
608 Davenport Street, PO Box 10
Dixon, IA 52745

Iowa Telecom
4001 Rodney Parham Road
Little Rock, AR 72217

PAETEC
1600 Old Pecos Trail, Suite J
Santa Fe, NM 87505

PAETEC Business Services
1600 Old Pecos Trail, Suite J
Santa Fe, NM 87505



Government Agencies

Iowa Department of
Natural Resources
Wallace State Office Building
502 East 9th Street
Des Moines, IA 50319

Iowa Department of
Transportation
800 Lincoln Way
Ames, IA 50010

U.S. Army Corps of Engineers
Rock Island District
Clock Tower Building
P.O. Box 2004
Rock Island, IL 61204

Scott County
Conservation Department
14910 110th Avenue
Davenport, IA 52804

Scott County Secondary Roads
500 W 4th Street
Davenport, IA 52801

Features

- XXXX Private Airport Runway
- ==== Streets
- ~~~~ Streams
- + + Railroad
- (3) Section Number
- - - Section Lines
- ←-TOWN - R01W -> Township Boundaries
- ▣ Municipality

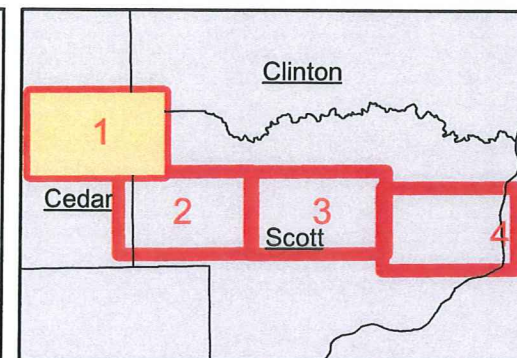


Exhibit B: Scott County

Date: 11/5/2014

ROCK ISLAND
CLEAN LINE

1 inch = 4,000 feet

Page 1 of 4





Government Agencies

Iowa Department of Natural Resources
Wallace State Office Building
502 East 9th Street
Des Moines, IA 50319

Iowa Department of Transportation
800 Lincoln Way
Ames, IA 50010

U.S. Army Corps of Engineers
Rock Island District
Clock Tower Building
P.O. Box 2004
Rock Island, IL 61204

Scott County Conservation Department
14910 110th Avenue
Davenport, IA 52804

Scott County Secondary Roads
500 W 4th Street
Davenport, IA 52801

ITC Midwest
123 5th Street SE, Cedar Rapids, IA 52401

Electric Transmission Lines
--- 2 -- Overhead 69,000v
--- 2A -- Overhead 345,000v

Central Iowa Power Cooperative
P.O. Box 2517
Cedar Rapids, IA 52406-2517

Electric Transmission Lines
--- 3 -- Overhead 69,000v
--- 3A -- Overhead 161,000v

Interstate Power & Light - Alliant Energy
4902 N Biltmore Avenue, Suite 1000
Madison, WI 53718

Electric Distribution Lines
----- 4 -- Overhead 7,200v
----- 5 -- Overhead 12,470v

Eastern Iowa Light and Power Cooperative
600 E 5th Street, Wilton, IA 52778

Electric Distribution Lines
----- 6 -- Overhead 7,200v
----- 7 -- Overhead 12,470v

MidAmerican Energy Company
P.O. Box 4350, Davenport, IA 52808-4350

Electric Distribution Lines
----- 8 -- Overhead 7,200v
----- 9 -- Overhead 12,470v
Electric Transmission Lines
--- 10 -- Overhead 69,000v
--- 11 -- Overhead 161,000v

Alliance Pipeline
6385 Old Shady Oak Road
Suite 150
Eden Prairie, MN 55344

Underground Pipelines
--- 12 -- Natural Gas Pipeline

Enterprise Products Operating LLC
1100 Louisiana Street
Houston, TX 77002

Underground Pipelines
--- 13 -- Natural Gas Pipeline

Northern Border Pipeline Company
717 Texas Street, Suite 2400
Houston, TX 77002

Underground Pipelines
--- 14 -- Natural Gas Pipeline

MidAmerican Energy Company
P.O. Box 4350
Davenport, IA 52808-4350

Underground Pipelines
--- 15 -- Natural Gas Pipeline

ONEOK ONEOK Plaza
100 West 5th Street
Tulsa, OK 74103

Underground Pipelines
--- 16 -- Petroleum Pipeline

Magellan Midstream Partners One Williams Center
Tulsa, OK 74172

Underground Pipelines
--- 17 -- Petroleum Pipeline

Electric Transmission Line to be Franchised
Rock Island Clean Line
1001 McKinney, Ste 700, Houston, TX 77002

Proposed Electric Transmission Line
--- 1 -- Overhead +/-600,000v

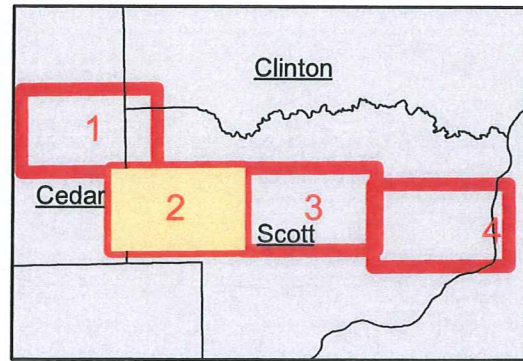
Water Distribution Companies
None

Railroad Companies
Burlington Northern Santa Fe Railway
2650 Lou Menk Drive
Fort Worth, TX 76131

Canadian Pacific
7550 Ogden Dale Road SE, Calgary
AB T2C 4X9, Canada

Communications Companies

Central Scott Telephone Company
125 N 2nd Street, PO Box 260
Eldridge, IA 52748
CenturyLink
925 W High Street, 9S9
Des Moines, IA 50309
Dixon Telephone Company
608 Davenport Street, PO Box 10
Dixon, IA 52745
Iowa Telecom
4001 Rodney Parham Road
Little Rock, AR 72217
PAETEC
1800 Old Pecos Trail, Suite J
Santa Fe, NM 87505
PAETEC Business Services
1800 Old Pecos Trail, Suite J
Santa Fe, NM 87505



Features

- XXXX Private Airport Runway
- ==== Streets
- ~~~~ Streams
- + + Railroad
- ③ Section Number
- - - Section Lines
- ← T80N - R01E → Township Boundaries
- ▣ Municipality

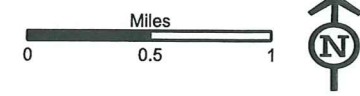
Exhibit B: Scott County

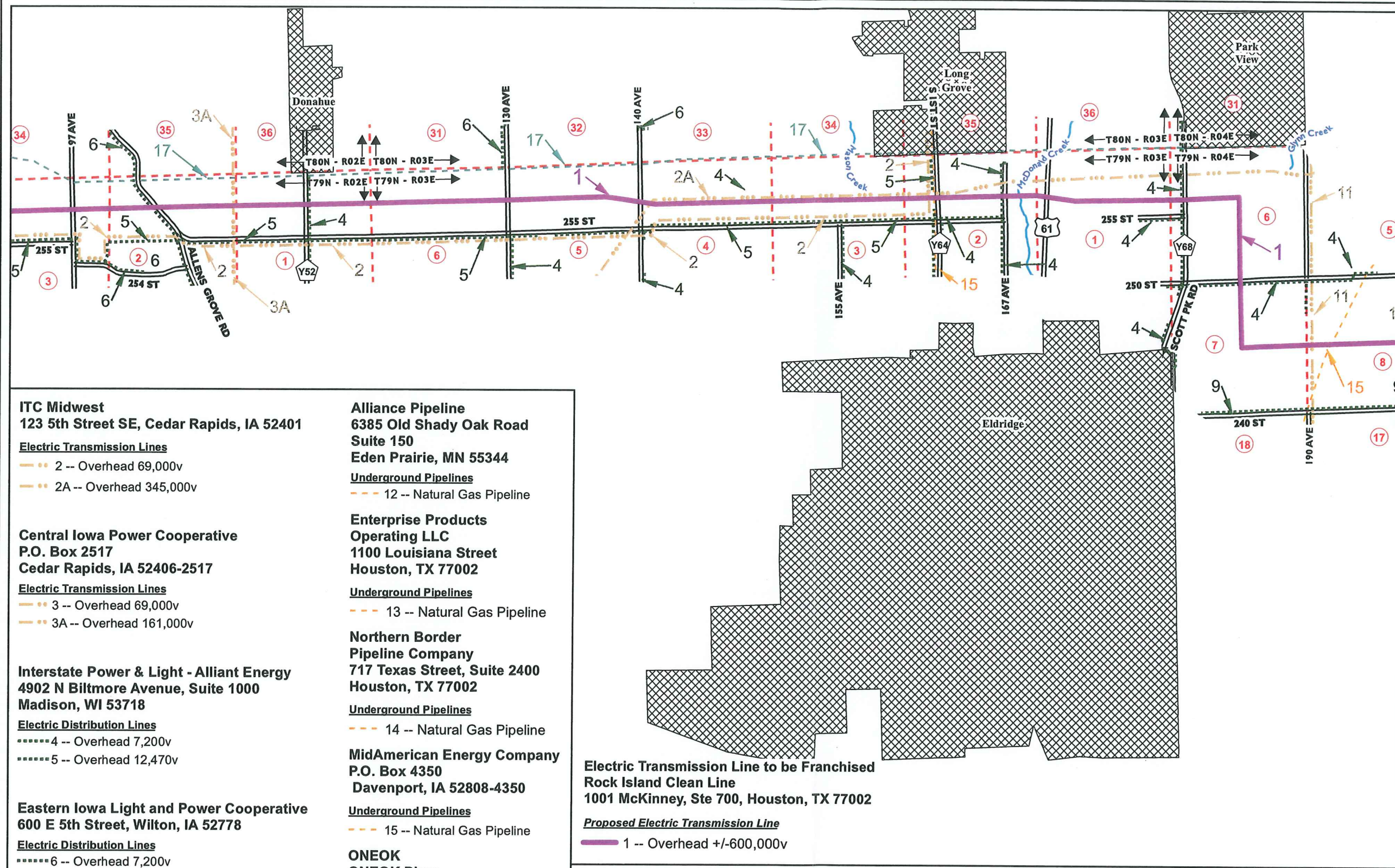
Date: 11/5/2014

ROCK ISLAND
CLEAN LINE

1 inch = 4,000 feet

Page 2 of 4





Government Agencies

Iowa Department of Natural Resources
Wallace State Office Building
502 East 9th Street
Des Moines, IA 50319

Iowa Department of Transportation
800 Lincoln Way
Ames, IA 50010

U.S. Army Corps of Engineers
Rock Island District
Clock Tower Building
P.O. Box 2004
Rock Island, IL 61204

Scott County Conservation Department
14910 110th Avenue
Davenport, IA 52804

Scott County Secondary Roads
500 W 4th Street
Davenport, IA 52801

ITC Midwest
123 5th Street SE, Cedar Rapids, IA 52401

Electric Transmission Lines
--- 2 -- Overhead 69,000v
--- 2A -- Overhead 345,000v

Central Iowa Power Cooperative
P.O. Box 2517
Cedar Rapids, IA 52406-2517

Electric Transmission Lines
--- 3 -- Overhead 69,000v
--- 3A -- Overhead 161,000v

Interstate Power & Light - Alliant Energy
4902 N Biltmore Avenue, Suite 1000
Madison, WI 53718

Electric Distribution Lines
----- 4 -- Overhead 7,200v
----- 5 -- Overhead 12,470v

Eastern Iowa Light and Power Cooperative
600 E 5th Street, Wilton, IA 52778

Electric Distribution Lines
----- 6 -- Overhead 7,200v
----- 7 -- Overhead 12,470v

MidAmerican Energy Company
P.O. Box 4350, Davenport, IA 52808-4350

Electric Distribution Lines
----- 8 -- Overhead 7,200v
----- 9 -- Overhead 12,470v
Electric Transmission Lines
--- 10 -- Overhead 69,000v
--- 11 -- Overhead 161,000v

Alliance Pipeline
6385 Old Shady Oak Road
Suite 150
Eden Prairie, MN 55344

Underground Pipelines
--- 12 -- Natural Gas Pipeline

Enterprise Products Operating LLC
1100 Louisiana Street
Houston, TX 77002

Underground Pipelines
--- 13 -- Natural Gas Pipeline

Northern Border Pipeline Company
717 Texas Street, Suite 2400
Houston, TX 77002

Underground Pipelines
--- 14 -- Natural Gas Pipeline

MidAmerican Energy Company
P.O. Box 4350
Davenport, IA 52808-4350

Underground Pipelines
--- 15 -- Natural Gas Pipeline

ONEOK ONEOK Plaza
100 West 5th Street
Tulsa, OK 74103

Underground Pipelines
--- 16 -- Petroleum Pipeline

Magellan Midstream Partners One Williams Center
Tulsa, OK 74172

Underground Pipelines
--- 17 -- Petroleum Pipeline

Electric Transmission Line to be Franchised
Rock Island Clean Line
1001 McKinney, Ste 700, Houston, TX 77002

Proposed Electric Transmission Line
--- 1 -- Overhead +/-600,000v

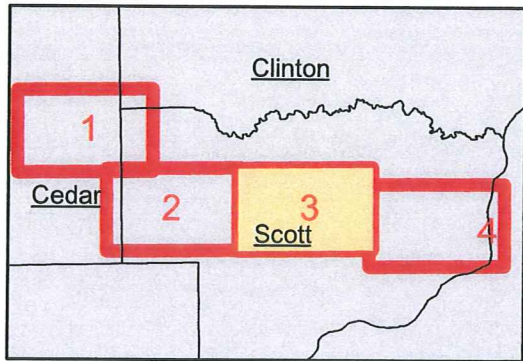
Water Distribution Companies
None

Railroad Companies
Burlington Northern Santa Fe Railway
2650 Lou Menk Drive
Fort Worth, TX 76131

Canadian Pacific
7550 Ogden Dale Road SE, Calgary
AB T2C 4X9, Canada

Communications Companies

Central Scott Telephone Company
125 N 2nd Street, PO Box 260
Eldridge, IA 52748
CenturyLink
925 W High Street, 9S9
Des Moines, IA 50309
Dixon Telephone Company
608 Davenport Street, PO Box 10
Dixon, IA 52745
Iowa Telecom
4001 Rodney Parham Road
Little Rock, AR 72217
PAETEC
1600 Old Pecos Trail, Suite J
Santa Fe, NM 87505
PAETEC Business Services
1600 Old Pecos Trail, Suite J
Santa Fe, NM 87505



Features

- XXXX Private Airport Runway
- == Streets
- ~ Streams
- + Railroad
- ③ Section Number
- - - Section Lines
- ← T80N - R02E → Township Boundaries
- ▨ Municipality

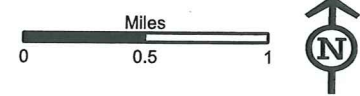
Exhibit B: Scott County

Date: 11/5/2014

ROCK ISLAND
CLEAN LINE

1 inch = 4,000 feet

Page 3 of 4





Government Agencies

Iowa Department of Natural Resources
Wallace State Office Building
502 East 9th Street
Des Moines, IA 50319

Iowa Department of Transportation
800 Lincoln Way
Ames, IA 50010

U.S. Army Corps of Engineers
Rock Island District
Clock Tower Building
P.O. Box 2004
Rock Island, IL 61204

Scott County Conservation Department
14910 110th Avenue
Davenport, IA 52804

Scott County Secondary Roads
500 W 4th Street
Davenport, IA 52801

ITC Midwest
123 5th Street SE, Cedar Rapids, IA 52401

Electric Transmission Lines
--- 2 -- Overhead 69,000v
--- 2A -- Overhead 345,000v

Central Iowa Power Cooperative
P.O. Box 2517
Cedar Rapids, IA 52406-2517

Electric Transmission Lines
--- 3 -- Overhead 69,000v
--- 3A -- Overhead 161,000v

Interstate Power & Light - Alliant Energy
4902 N Biltmore Avenue, Suite 1000
Madison, WI 53718

Electric Distribution Lines
----- 4 -- Overhead 7,200v
----- 5 -- Overhead 12,470v

Eastern Iowa Light and Power Cooperative
600 E 5th Street, Wilton, IA 52778

Electric Distribution Lines
----- 6 -- Overhead 7,200v
----- 7 -- Overhead 12,470v

MidAmerican Energy Company
P.O. Box 4350, Davenport, IA 52808-4350

Electric Distribution Lines
----- 8 -- Overhead 7,200v
----- 9 -- Overhead 12,470v
Electric Transmission Lines
--- 10 -- Overhead 69,000v
--- 11 -- Overhead 161,000v

Alliance Pipeline
6385 Old Shady Oak Road
Suite 150
Eden Prairie, MN 55344

Underground Pipelines
--- 12 -- Natural Gas Pipeline

Enterprise Products Operating LLC
1100 Louisiana Street
Houston, TX 77002

Underground Pipelines
--- 13 -- Natural Gas Pipeline

Northern Border Pipeline Company
717 Texas Street, Suite 2400
Houston, TX 77002

Underground Pipelines
--- 14 -- Natural Gas Pipeline

MidAmerican Energy Company
P.O. Box 4350
Davenport, IA 52808-4350

Underground Pipelines
--- 15 -- Natural Gas Pipeline

ONEOK ONEOK Plaza
100 West 5th Street
Tulsa, OK 74103

Underground Pipelines
--- 16 -- Petroleum Pipeline

Magellan Midstream Partners One Williams Center
Tulsa, OK 74172

Underground Pipelines
--- 17 -- Petroleum Pipeline

Electric Transmission Line to be Franchised
Rock Island Clean Line
1001 McKinney, Ste 700, Houston, TX 77002

Proposed Electric Transmission Line
--- 1 -- Overhead +/-600,000v

Water Distribution Companies
None

Railroad Companies
Burlington Northern Santa Fe Railway
2650 Lou Menk Drive
Fort Worth, TX 76131
Canadian Pacific
7550 Ogden Dale Road SE, Calgary
AB T2C 4X9, Canada

Communications Companies
Central Scott Telephone Company
125 N 2nd Street, PO Box 260
Eldridge, IA 52748
CenturyLink
925 W High Street, 9S9
Des Moines, IA 50309
Dixon Telephone Company
608 Davenport Street, PO Box 10
Dixon, IA 52745
Iowa Telecom
4001 Rodney Parham Road
Little Rock, AR 72217
PAETEC
1800 Old Pecos Trail, Suite J
Santa Fe, NM 87505
PAETEC Business Services
1800 Old Pecos Trail, Suite J
Santa Fe, NM 87505

Features

- XXXX Private Airport Runway
- == Streets
- ~ Streams
- + + Railroad
- ③ Section Number
- - - Section Lines
- ← TOWN - RSW → Township Boundaries
- ▨ Municipality

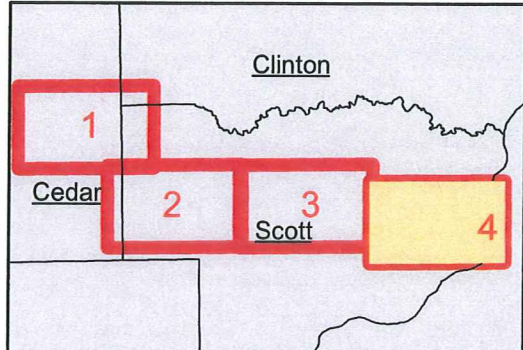


Exhibit B: Scott County

Date: 11/5/2014



1 inch = 4,000 feet

