



6601 Westown Pkwy, STE 200
West Des Moines, Iowa 50266
515-244-3500
fax 515-244-3599
www.sullivan-ward.com

direct: 515-247-4710
dpuckett@sullivan-ward.com

John T. Ward
Louis R. Hockenberger
Robert M. Holliday
Mark Landa
Dennis L. Puckett
Samantha J. Gronewald
Kyle A. Kruidenier
Michael J. Green
Elizabeth N. Overton
David J. Hellstern
^ΔL. Chris Knauf
Amanda A. James

Retired
Michael P. Joynt
Richard R. Chabot

William W. Sullivan
[1919-1999]

John V. Donnelly
[1940-2010]

Also Admitted in:
^ΔNebraska

**Law Offices
Sullivan & Ward, P.C.**

November 6, 2014

To: THE TELEPHONE LINE COMPANY
ELECTRIC COMPANY, RAILROAD COMPANY,
OR INDIVIDUAL ADDRESSED

(Wright County)

Dear Addressee:

Please be advised that on behalf of Rock Island Clean Line LLC, we are filing with the Iowa Utilities Board a Petition for Electric Transmission Line Franchise to erect, operate and maintain an electric transmission line in Wright County, Iowa, over the route as indicated on the enclosed map (which is the Exhibit B included with the Petition). This Petition is for a nominal ±600 kilovolt ("kV"), high voltage, direct current ("HVDC") transmission line that will originate at a converter station in O'Brien County, Iowa (the ultimate west terminus), traverse Iowa approximately 370 miles, cross the Mississippi River near Princeton, Iowa, enter Illinois south of Cordova, Illinois, traverse Illinois for approximately 120 miles, and interconnect with the 765 kV transmission system of the PJM Interconnection, LLC ("PJM") at the Collins substation in Grundy County, Illinois. The HVDC transmission line will terminate at a converter station to be located in Channahon, Illinois (the ultimate east terminus). The enclosed map shows the portion of the route in Wright County. A separate Petition is being filed for each of the 16 Iowa Counties through which the proposed line will be routed.

Should you have any questions concerning the attached proposal, please notify this office or Elizabeth Conley, Manager, Rock Island Clean Line LLC, 510 E. Locust Street, Suite 200, Des Moines, Iowa 50309. Telephone: 1-877-907-8516.

Sincerely,

Sullivan & Ward, P.C.

/s/

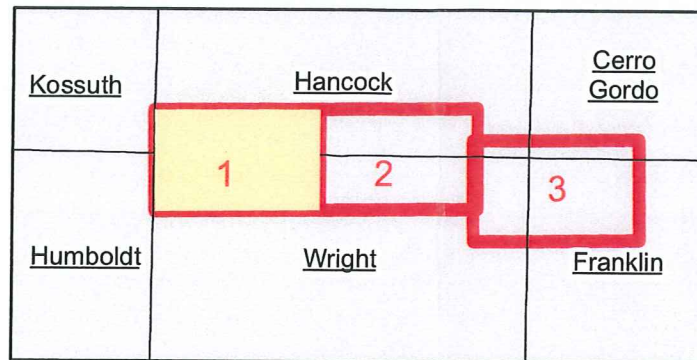
Dennis L. Puckett

Enclosures

Exhibit F

Exhibit F Mailing List

Corn Belt Power Cooperative 1300 13th St N, PO Box 508 Humboldt IA 50548	Interstate Power & Light - Alliant Energy 4902 N Biltmore Ave Ste 1000 Madison WI 53718
Northern Natural Gas Company 8101 Birchwood Ct, Suite F Johnston IA 50131	Prairie Energy Cooperative 2099 Hwy 3, PO Box 353 Clarion IA 50525
ITC Midwest 123 5th St SE Cedar Rapids IA 52401	Frontier Long Distance of America Inc 14450 Burnhaven Dr Burnsville MN 55306
Goldfield Access Network 536 N Main St, PO Box 67 Goldfield IA 50542	Norway Rural Telephone Company 105 S Main St, PO Box 20 Kanawha IA 50447
Union Pacific Railroad 1400 Douglas St Mail Stop 1690 Omaha NE 68179	Iowa DNR Wallace State Office Bldg 502 E 9th St Des Moines IA 50319
Iowa Department of Transportation 800 Lincoln Way Ames IA 50010	U.S. Army Corps of Engineers Rock Island District, Clock Tower Bldg PO Box 2004 Rock Island IL 61204
Wright County Conservation Board 1768 O'Brien Ave Clarion IA 50525	Wright County Engineer and Secondary Roads 416 5th Ave SW, PO Box 269 Clarion IA 50525
Goldfield Telephone Company 536 N. Main Street P.O. Box 67 Goldfield IA 50542	



Railroad Companies

Union Pacific Railroad
1400 Douglas Street, Mail Stop 1690
Omaha, NE 68179

Water Distribution Companies

None

Communications Companies

Frontier Long Distance of America, Inc.
14450 Burnhaven Drive
Burnsville, MN 55306

Goldfield Access Network
536 N Main Street, PO Box 67
Goldfield, IA 50542

Goldfield Telephone Company
536 N Main Street, PO Box 67
Goldfield, IA 50542

Norway Rural Telephone Company
105 South Main Street
PO Box 20
Kanawha, IA 50447

Government Agencies

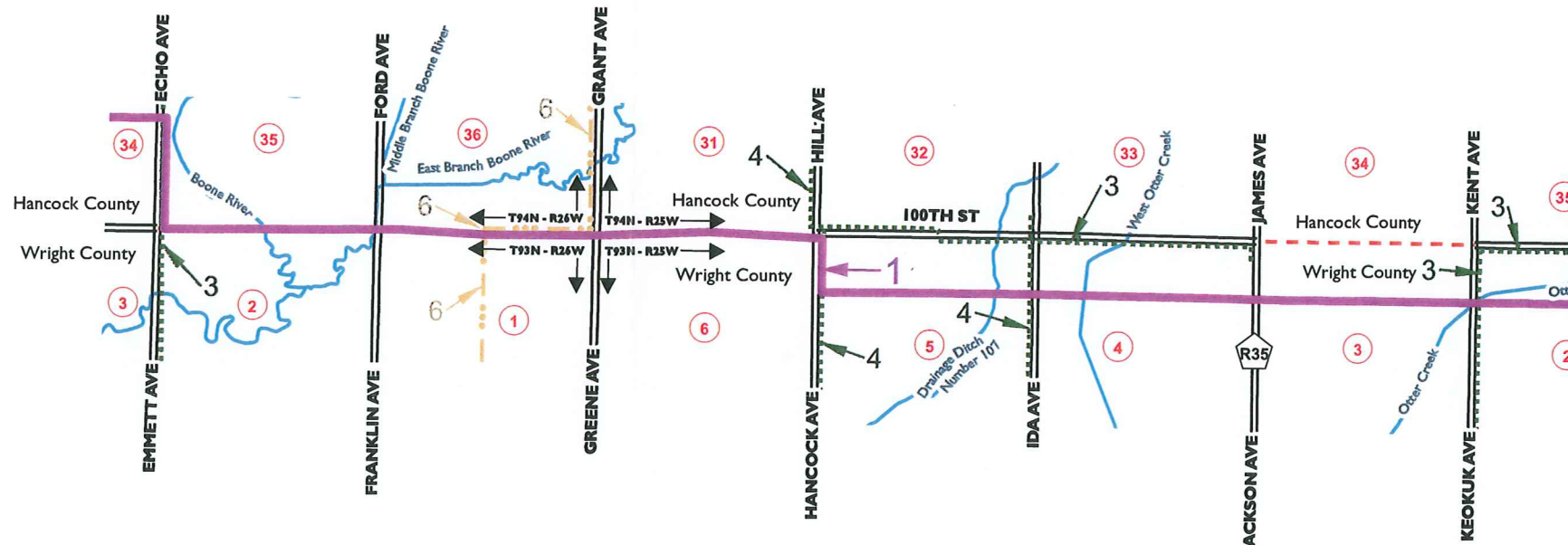
Iowa Department of Natural Resources
Wallace State Office Building
502 East 9th Street
Des Moines, IA 50319

Iowa Department of Transportation
800 Lincoln Way
Ames, IA 50010

U.S. Army Corps of Engineers
Rock Island District
Clock Tower Building
PO BOX 2004
Rock Island, IL 61204

Wright County Conservation Board
1768 O'Brien Ave.
Clarion, IA 50525

Wright County Engineer and Secondary Roads
416 5th Avenue SW
P.W. Box 269
Clarion, IA 50525



Electric Transmission Line to be Franchised
Rock Island Clean Line
1001 McKinney, Ste 700
Houston, TX 77002

Proposed Electric Transmission Line

1 -- Overhead +/-600,000v

Features

- Railroad
- Streams
- Streets
- Section Number
- Section Lines
- Park or Recreation Area
- Municipality
- Township Boundaries

Interstate Power & Light - Alliant Energy
4902 N Biltmore Avenue, Suite 1000
Madison, WI 53718

Electric Distribution Lines

2 -- Overhead 7200v

Prairie Energy Cooperative
2099 Hwy 3, PO Box 353
Clarion, IA 50525

Electric Distribution Lines

3 -- Overhead 7,200v

4 -- Overhead 12,470v

ITC Midwest
123 5th Street SE
Cedar Rapids, IA 52401

Electric Transmission Lines

5 -- Overhead 69,000v

Corn Belt Power Cooperative
1300 13th Street North
PO Box 508
Humboldt, IA 50548

Electric Transmission Lines

6 -- Overhead 69,000v

Northern Natural Gas
8101 Birchwood Court, Suite F
Johnston, IA 50131

Underground Pipelines

7 -- Natural Gas Pipeline

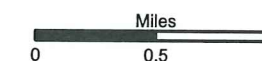
Exhibit B: Wright County

Date: 11/5/2014

ROCK ISLAND

CLEAN LINE

1 inch = 4,000 feet



Kossuth	Hancock	Cerro Gordo
Humboldt	Wright	Franklin

Railroad Companies
 Union Pacific Railroad
 1400 Douglas Street, Mail Stop 1690
 Omaha, NE 68179

Water Distribution Companies
 None

Communications Companies
 Frontier Long Distance of America, Inc.
 14450 Burnhaven Drive
 Burnsville, MN 55306
 Goldfield Access Network
 536 N Main Street, PO Box 67
 Goldfield, IA 50542
 Goldfield Telephone Company
 536 N Main Street, PO Box 67
 Goldfield, IA 50542
 Norway Rural Telephone Company
 105 South Main Street
 PO Box 20
 Kanawha, IA 50447

Government Agencies

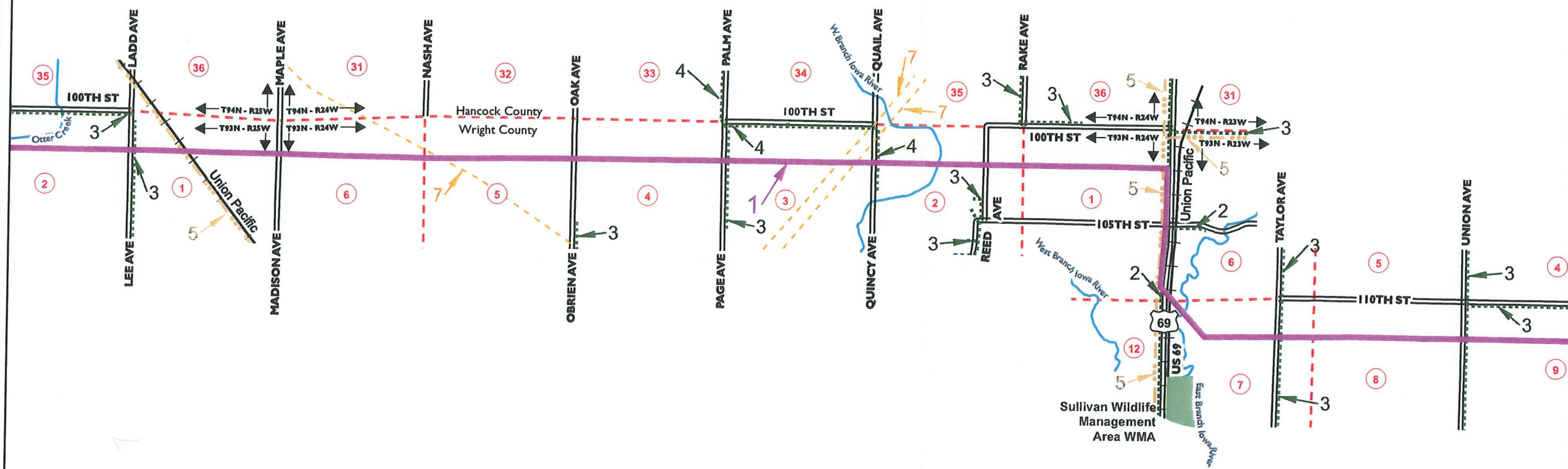
Iowa Department of Natural Resources
 Wallace State Office Building
 502 East 9th Street
 Des Moines, IA 50319

Iowa Department of Transportation
 800 Lincoln Way
 Ames, IA 50010

U.S. Army Corps of Engineers
 Rock Island District
 Clock Tower Building
 PO BOX 2004
 Rock Island, IL 61204

Wright County Conservation Board
 1768 O'Brien Ave.
 Clarion, IA 50525

Wright County Engineer and Secondary Roads
 416 5th Avenue SW
 P.W. Box 269
 Clarion, IA 50525



Electric Transmission Line to be Franchised
 Rock Island Clean Line
 1001 McKinney, Ste 700
 Houston, TX 77002

Proposed Electric Transmission Line
 1 -- Overhead +/-600,000v

Features

- +— Railroad
- ~ Streams
- Streets
- ③ Section Number
- - - Section Lines
- Park or Recreation Area
- ▨ Municipality
- ←T94N - R25W→ Township Boundaries

Interstate Power & Light - Alliant Energy
 4902 N Biltmore Avenue, Suite 1000
 Madison, WI 53718

Electric Distribution Lines
 2 -- Overhead 7200v

Prairie Energy Cooperative
 2099 Hwy 3, PO Box 353
 Clarion, IA 50525

Electric Distribution Lines
 3 -- Overhead 7,200v
 4 -- Overhead 12,470v

ITC Midwest
 123 5th Street SE
 Cedar Rapids, IA 52401

Electric Transmission Lines
 - - - 5 -- Overhead 69,000v

Corn Belt Power Cooperative
 1300 13th Street North
 PO Box 508
 Humboldt, IA 50548

Electric Transmission Lines
 - - - 6 -- Overhead 69,000v

Northern Natural Gas
 8101 Birchwood Court, Suite F
 Johnston, IA 50131

Underground Pipelines
 - - - 7 -- Natural Gas Pipeline

Exhibit B: Wright County

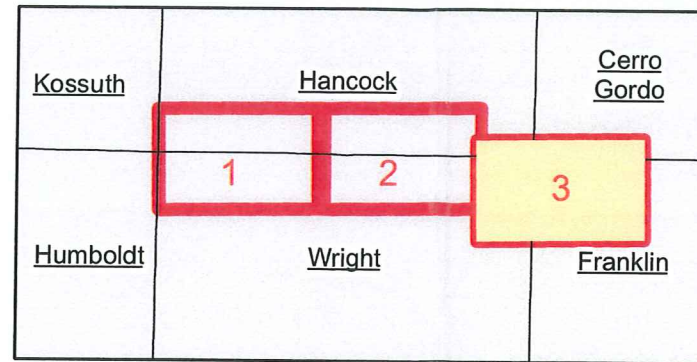
Date: 11/5/2014

ROCK ISLAND
 CLEAN LINE

1 inch = 4,000 feet

Page 2 of 3

Miles
 0 0.5 1



Railroad Companies
 Union Pacific Railroad
 1400 Douglas Street, Mail Stop 1690
 Omaha, NE 68179

Water Distribution Companies
 None

Communications Companies
 Frontier Long Distance of America, Inc.
 14450 Burnhaven Drive
 Burnsville, MN 55306
 Goldfield Access Network
 536 N Main Street, PO Box 67
 Goldfield, IA 50542
 Goldfield Telephone Company
 536 N Main Street, PO Box 67
 Goldfield, IA 50542
 Norway Rural Telephone Company
 105 South Main Street
 PO Box 20
 Kanawha, IA 50447

Government Agencies

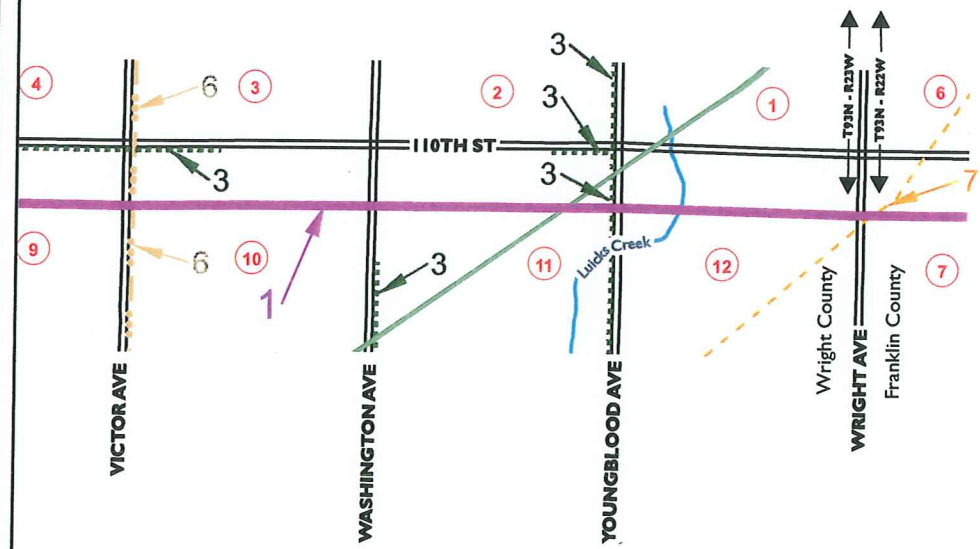
Iowa Department of Natural Resources
 Wallace State Office Building
 502 East 9th Street
 Des Moines, IA 50319

Iowa Department of Transportation
 800 Lincoln Way
 Ames, IA 50010

U.S. Army Corps of Engineers
 Rock Island District
 Clock Tower Building
 PO BOX 2004
 Rock Island, IL 61204

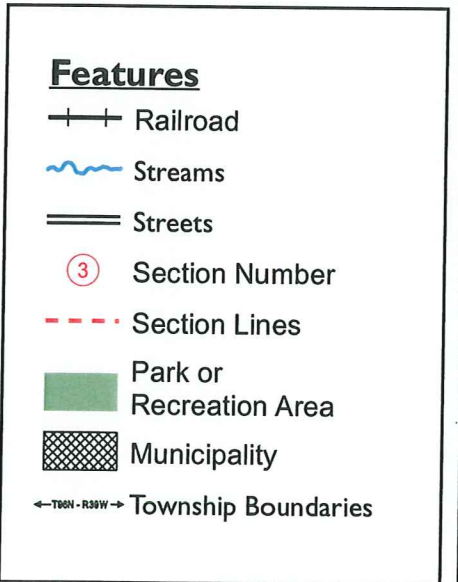
Wright County Conservation Board
 1768 O'Brien Ave.
 Clarion, IA 50525

Wright County Engineer and Secondary Roads
 416 5th Avenue SW
 P.W. Box 269
 Clarion, IA 50525



Electric Transmission Line to be Franchised
 Rock Island Clean Line
 1001 McKinney, Ste 700
 Houston, TX 77002

Proposed Electric Transmission Line
 1 -- Overhead +/-600,000v



<p>Interstate Power & Light - Alliant Energy 4902 N Biltmore Avenue, Suite 1000 Madison, WI 53718</p> <p>Electric Distribution Lines ----- 2 -- Overhead 7200v</p>	<p>Prairie Energy Cooperative 2099 Hwy 3, PO Box 353 Clarion, IA 50525</p> <p>Electric Distribution Lines ----- 3 -- Overhead 7,200v ----- 4 -- Overhead 12,470v</p>	<p>ITC Midwest 123 5th Street SE Cedar Rapids, IA 52401</p> <p>Electric Transmission Lines - - - - - 5 -- Overhead 69,000v</p>	<p>Corn Belt Power Cooperative 1300 13th Street North PO Box 508 Humboldt, IA 50548</p> <p>Electric Transmission Lines - - - - - 6 -- Overhead 69,000v</p>	<p>Northern Natural Gas 8101 Birchwood Court, Suite F Johnston, IA 50131</p> <p>Underground Pipelines - - - - - 7 -- Natural Gas Pipeline</p>
---	--	---	--	--

Exhibit B: Wright County

ROCK ISLAND CLEAN LINE

Date: 11/5/2014

1 inch = 4,000 feet

Page 3 of 3