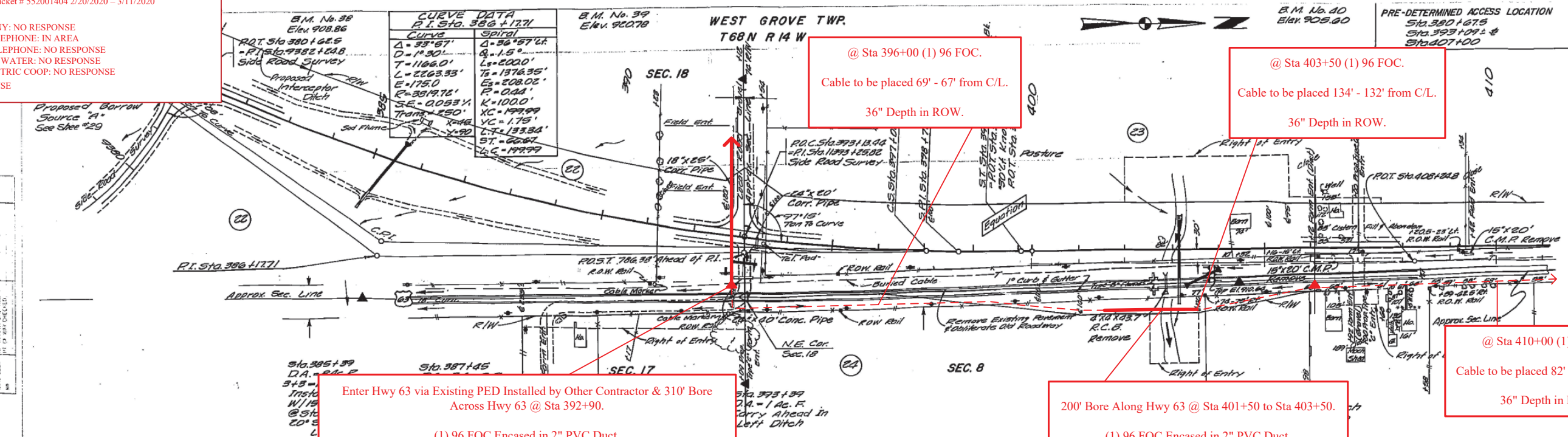


Iowa DOT One Call
 One Call Ticket # 552001404 2/20/2020 - 3/11/2020

ANR PIPELINE COMPANY: NO RESPONSE
 CITIZENS MUTUAL TELEPHONE: IN AREA
 FARMERS MUTUAL TELEPHONE: NO RESPONSE
 RATHBURN REGIONAL WATER: NO RESPONSE
 SOUTHERN IOWA ELECTRIC COOP: NO RESPONSE
 IOWA DOT: NO RESPONSE



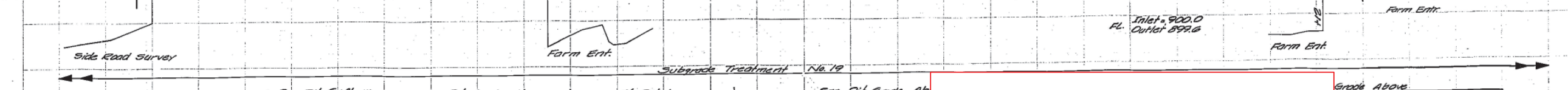
Legend
 - Citizens Mutual Tel Co.
 - Bloomfield R.E.C.
 - Bloomfield R.E.C.
 - N.W. Bell Tel Co.

For Side Road Detail @ Sta 397+12.78 See Sheet No. 29.

Uns. (C-58)	1190
Uns. (C-58) From 3952	1197
Uns. (C-58) From 3922	5477
Uns. (C-58) From 38113922	253
	30455

For Intersection Details @ Sta. 380+62.5 See Sheet No. 34E

Uns. (C-58)	15629
Uns. (C-58)	15639
From 343922	936
From 3772	293
Uns. (C-58) From 4292	4883
Uns. (C-58) From 4432	5483
	9187



General Notes:

- All Fiber will be placed 36" Deep in ROW and 48" Deep Under Roadway
 - All Fiber will be buried 10' below Waterways.
- Areas needing Tree/Brush removal will be cleared and removed from ROW.
 - Fiber to be placed 6'-8' from back of ROW.

PROPOSED PLOW: - - - - -
PROPOSED BORE: ————

Grade Above

2024	2022	2020	2018
17	17	17	17
496	496	496	496

ANR PIPELINE COMPANY: NO RESPONSE
CITIZENS MUTUAL TELEPHONE: IN AREA
FARMERS MUTUAL TELEPHONE: NO RESPONSE
RATHBURN REGIONAL WATER: NO RESPONSE
SOUTHERN IOWA ELECTRIC COOP: NO RESPONSE
IOWA DOT: NO RESPONSE

@ Sta 410+00 (1) 96 FOC.
Cable to be placed 82' - 80' from C/L.
36" Depth in ROW.

@ Sta 421+00 (1) 96 FOC.
Cable to be placed 104' - 102' from C/L.
36" Depth in ROW.

@ Sta 421+50 (1) 96 FOC.
Cable to be placed 74' - 72' from C/L.
36" Depth in ROW.

540' Bore Along Hwy 63 @ Sta 435+00 to Sta 440+40.
(1) 96 FOC Encased in 2" PVC Duct.
Cable to be placed 104' - 102' from C/L.
36" Depth in ROW. 10' Below Bottom of Waterway.

@ Sta 440+00 (1) 96 FOC.
Cable to be placed 104' - 102' from C/L.
36" Depth in ROW.

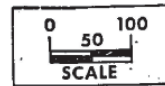
@ Sta 410+78.8 (1) 96 FOC.
Cable to be placed 84' - 82' from C/L.
36" Depth in ROW.

@ Sta 418+00 (1) 96 FOC.
Cable to be placed 84' - 82' from C/L.
36" Depth in ROW.

150' Bore Along Hwy 63 @ Sta 417+70 to Sta 419+20.
(1) 96 FOC Encased in 2" PVC Duct.
Cable to be placed 84' - 104' from C/L.
Cable will maintain 6' - 8' from back of ROW.
36" Depth in ROW. 10' Below Bottom of Waterway

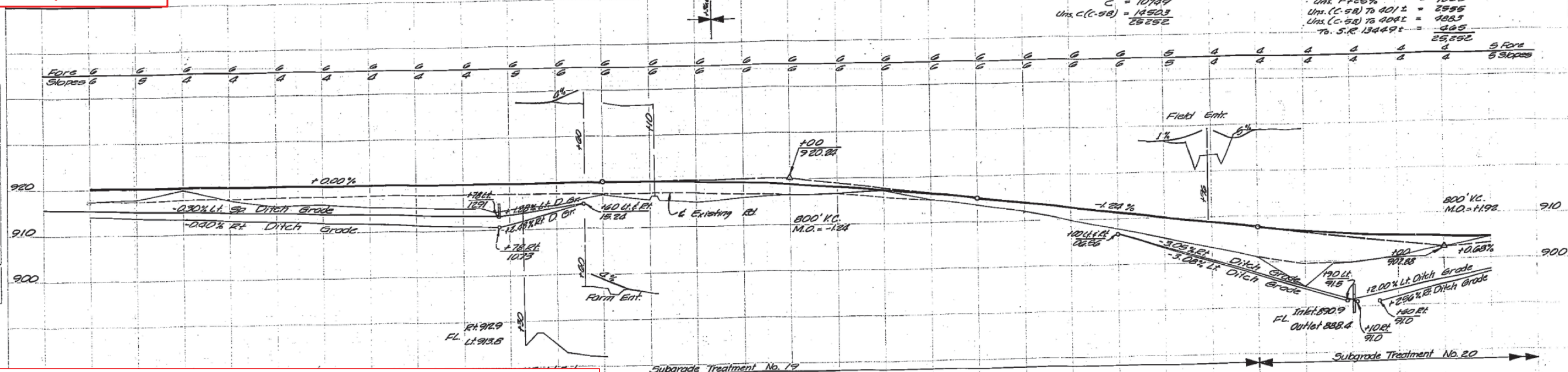
@ Sta 431+50 (1) 96 FOC.
Cable to be placed 84' - 82' from C/L.
36" Depth in ROW.

New PED @ Sta 435+00 (1) 96 FOC.
PED to be placed 1' from ROW.
Cable to be placed 104' - 102' from C/L.



For Brush Mark Descriptions
See Sheet No. 33A
For Control Point Reference Ties
See Sheet No. 33C

C ₁ = 10749	F125% = 102.84
Uns. C(-58) = 14923	Uns. F125% = 70.65
25252	Uns. (C-58) to 4012 = 25.55
	Uns. (C-58) to 4042 = 48.53
	To S.R. 13449 = 4.05
	25,252
	5 For
	5 Slopes



- General Notes:**
- All Fiber will be placed 36" Deep in ROW and 48" Deep Under Roadway
 - All Fiber will be buried 10' below Waterways.
 - Areas needing Tree/Brush removal will be cleared and removed from ROW.
 - Fiber to be placed 6'-8' from back of ROW.

PROPOSED PLOW: - - - - -
PROPOSED BORE: _____

Count 591, 030 added curb fill, 11/14/17 - DEN

DATE	BY	REVISION
11/14/17	EC: Mink	7. 1/2"

STATION	ELEVATION	REMARKS
1820	1820	
1821	1821	
1822	1822	
1823	1823	
1824	1824	
1825	1825	
1826	1826	
1827	1827	
1828	1828	
1829	1829	
1830	1830	
1831	1831	
1832	1832	
1833	1833	
1834	1834	
1835	1835	
1836	1836	
1837	1837	
1838	1838	
1839	1839	
1840	1840	
1841	1841	
1842	1842	
1843	1843	
1844	1844	
1845	1845	
1846	1846	
1847	1847	
1848	1848	
1849	1849	
1850	1850	

ANR PIPELINE COMPANY: NO RESPONSE
CITIZENS MUTUAL TELEPHONE: IN AREA
FARMERS MUTUAL TELEPHONE: NO RESPONSE
RATHBURN REGIONAL WATER: NO RESPONSE
SOUTHERN IOWA ELECTRIC COOP: NO RESPONSE
IOWA DOT: NO RESPONSE

WEST GROVE TWP.
T68N R14W

B.M. No. 43
Elev. 909.74

B.M. No. 44
Elev. 915.74

PRE-DETERMINED AC
Sta. 447+37.0
Sta. 455+00
Sta. 464+20

@ Sta 440+00 (1) 96 FOC.
Cable to be placed 104' - 102' from C/L.
36" Depth in ROW.

@ Sta 450+20 (1) 24 FOC.
Cable to be placed 89' - 87' from C/L.
36" Depth in ROW.

@ Sta 460+05 (1) 24 FOC.
Cable to be placed 89' - 87' from C/L.
36" Depth in ROW.

@ Sta 464+85 (1) 24 FOC.
Cable to be placed 64' - 62' from C/L.
36" Depth in ROW.

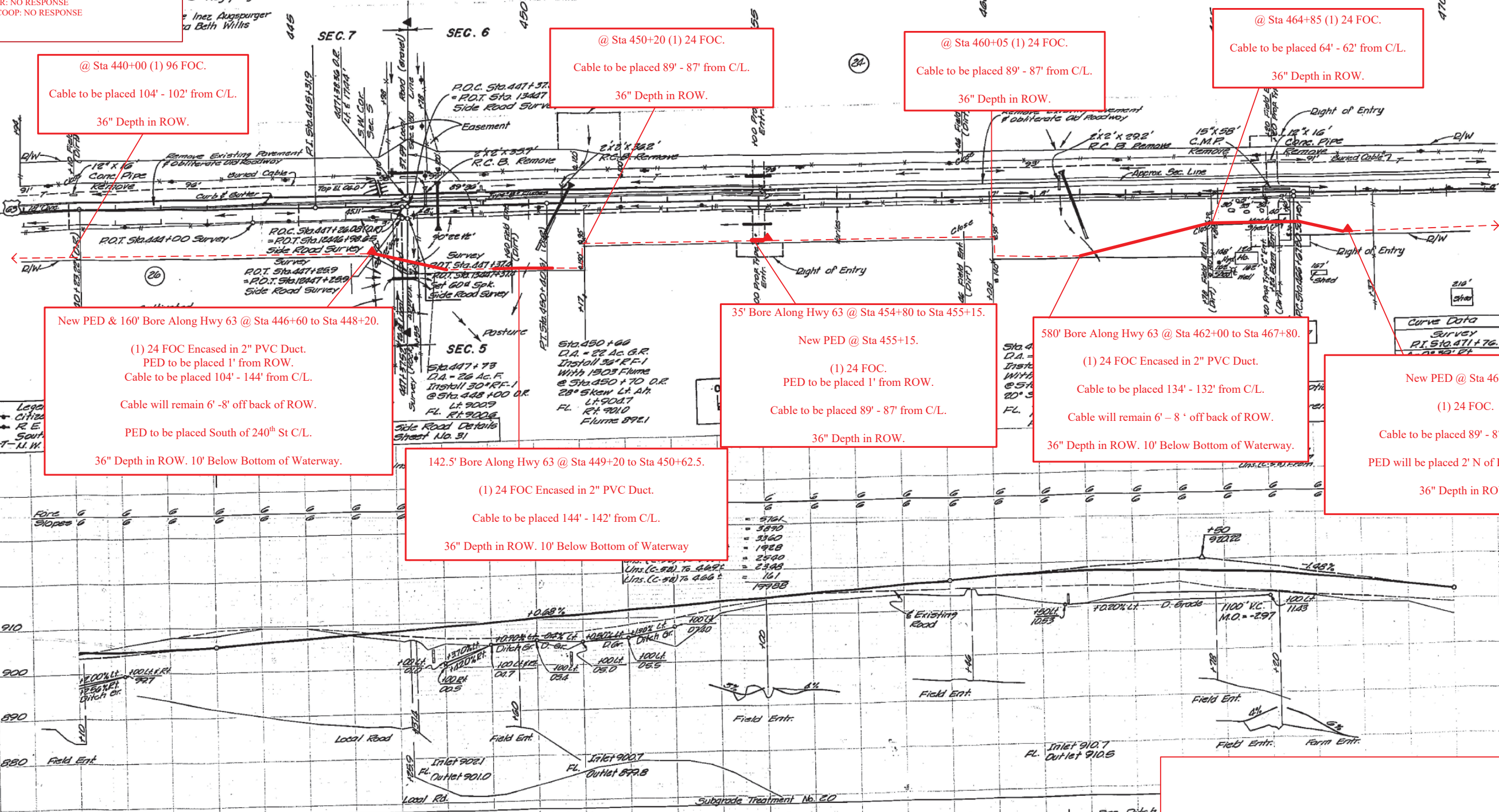
New PED & 160' Bore Along Hwy 63 @ Sta 446+60 to Sta 448+20.
(1) 24 FOC Encased in 2" PVC Duct.
PED to be placed 1' from ROW.
Cable to be placed 104' - 144' from C/L.
Cable will remain 6' - 8' off back of ROW.
PED to be placed South of 240th St C/L.
36" Depth in ROW. 10' Below Bottom of Waterway.

142.5' Bore Along Hwy 63 @ Sta 449+20 to Sta 450+62.5.
(1) 24 FOC Encased in 2" PVC Duct.
Cable to be placed 144' - 142' from C/L.
36" Depth in ROW. 10' Below Bottom of Waterway

35' Bore Along Hwy 63 @ Sta 454+80 to Sta 455+15.
New PED @ Sta 455+15.
(1) 24 FOC.
PED to be placed 1' from ROW.
Cable to be placed 89' - 87' from C/L.
36" Depth in ROW.

580' Bore Along Hwy 63 @ Sta 462+00 to Sta 467+80.
(1) 24 FOC Encased in 2" PVC Duct.
Cable to be placed 134' - 132' from C/L.
Cable will remain 6' - 8' off back of ROW.
36" Depth in ROW. 10' Below Bottom of Waterway.

New PED @ Sta 467+80.
(1) 24 FOC.
Cable to be placed 89' - 87' from C/L.
PED will be placed 2' N of Existing PED.
36" Depth in ROW.



PROPOSED PLOW: - - - - -
PROPOSED BORE: ————

- General Notes:
- All Fiber will be placed 36" Deep in ROW and 48" Deep Under Roadway
 - All Fiber will be buried 10' below Waterways.
 - Areas needing Tree/Brush removal will be cleared and removed from ROW.
 - Fiber to be placed 6'-8' from back of ROW.

STATION	ELEVATION	REMARKS
11.72	12.40	
13.09	13.76	
14.04	14.80	
15.12	15.93	
16.04	17.06	
16.80	17.28	
17.57	17.49	
17.61	17.57	
17.65	17.64	
17.65	17.65	
17.63	17.63	
17.60	17.60	

Hand 5/11/20
checked and 2/20/2020
1/11 - DEN

Iowa DOT One Call
One Call Ticket # 552001404 2/20/2020 - 3/11/2020

ANR PIPELINE COMPANY: NO RESPONSE
CITIZENS MUTUAL TELEPHONE: IN AREA
FARMERS MUTUAL TELEPHONE: NO RESPONSE
RATHBURN REGIONAL WATER: NO RESPONSE
SOUTHERN IOWA ELECTRIC COOP: NO RESPONSE
IOWA DOT: NO RESPONSE

New PED @ Sta 482+90.
(1) 24 FOC.
PED to be placed 1' from ROW.
Cable to be placed 124' - 122' from C/L.
36" Depth in ROW.

380' Bore Along Hwy 63 @ Sta 486+80 to Sta 490+60.
(1) 24 FOC Encased in 2" PVC Duct.
Cable to be placed 124' - 122' from C/L.
36" Depth in ROW. 10' Below Bottom of Waterway

New PED & 250' Bore Across Hwy 63 @ Sta 498+30.
(1) 6 FOC Encased in 2" PVC Duct.
36" Depth in ROW, 48" Depth Under Roadway.
Bore Pit West of Hwy Sta 498+30 is outside of ROW.
PED to be placed 1' from ROW.
Cable to be placed 164' - 162' from C/L.

@ Sta 499+00 (1) 24 FOC.
Cable to be placed 164' - 162' from C/L.
36" Depth in ROW.

@ Sta 474+00 (1) 24 FOC.
Cable to be placed 124' - 122' from C/L.
36" Depth in ROW.

New PED @ Sta 474+85.
(1) 24 FOC.
PED to be placed 1' from ROW.
Cable to be placed 124' - 122' from C/L.
36" Depth in ROW.

@ Sta 470+00 (1) 24 FOC.
Cable to be placed 89' - 87' from C/L.
36" Depth in ROW.

New PED @ Sta 490+60.
(1) 24 FOC.
Cable to be placed 124' - 122' from C/L.
PED to be placed 1' from ROW.
36" Depth in ROW.

770' Bore Along Hwy 63 @ Sta 490+60 to Sta 498-30.
(1) 24 FOC Encased in 2" PVC Duct.
Cable to be placed 124' - 164' from C/L.
Cable will maintain 6'-8' off back of ROW.
36" Depth in ROW. 10' Below Bottom of Waterway

160' Bore Along Hwy 63 @ Sta 498+30 to Sta 499+90.
(1) 24 FOC Encased in 2" PVC Duct.
Cable to be placed 164' - 134' from C/L.
Cable will maintain 6'-8' off back of ROW.
36" Depth in ROW. 10' Below Bottom of Waterway

165' Bore Along Hwy 63 @ Sta 470+55 to Sta 472+20.
(1) 24 FOC Encased in 2" PVC Duct.
Cable to be placed 89' - 164' from C/L.
Cable will maintain 6' - 8' from C/L.
36" Depth in ROW. 10' Below Bottom of Waterway

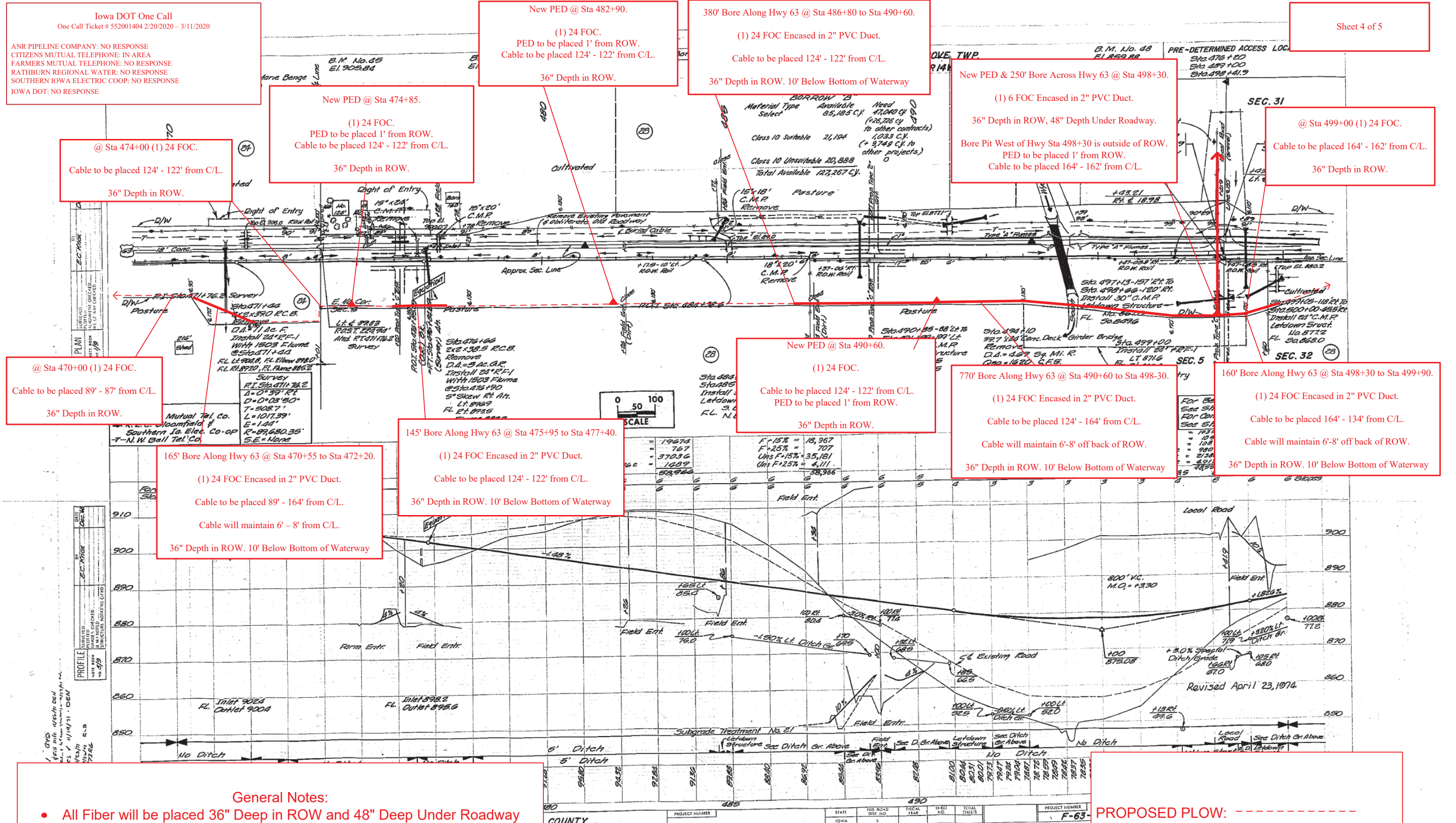
145' Bore Along Hwy 63 @ Sta 475+95 to Sta 477+40.
(1) 24 FOC Encased in 2" PVC Duct.
Cable to be placed 124' - 122' from C/L.
36" Depth in ROW. 10' Below Bottom of Waterway

1. OVD
2. Fill this section in
3. 11/14/71 - DEN
4. 11/14/71 - DEN
5. 11/14/71 - DEN
6. 11/14/71 - DEN
7. 11/14/71 - DEN
8. 11/14/71 - DEN
9. 11/14/71 - DEN
10. 11/14/71 - DEN

General Notes:

- All Fiber will be placed 36" Deep in ROW and 48" Deep Under Roadway
 - All Fiber will be buried 10' below Waterways.
- Areas needing Tree/Brush removal will be cleared and removed from ROW.
 - Fiber to be placed 6'-8' from back of ROW.

PROPOSED PLOW: - - - - -
PROPOSED BORE: —————



PROJECT NUMBER	STATE	FED. ROAD DIST. NO.	FISCAL YEAR	SHEET NO.	TOTAL SHEETS	PROJECT NUMBER
485	IOWA	5		490		F-63

@ Sta 501+00 (1) 24 FOC.
Cable to be placed 94' - 92' from C/L.
36" Depth in ROW.

@ Sta 500+00 (1) 24 FOC.
Cable to be placed 134' - 132' from C/L.
36" Depth in ROW.

@ Sta 505+00 (1) 12 FOC.
Cable to be placed 114' - 112' from C/L.
36" Depth in ROW.

@ Sta 507+00 (1) 12 FOC.
Cable to be placed 114' - 112' from C/L.
36" Depth in ROW.

250' Bore Along Hwy 63 @ Sta 514+80 to Sta 517+30.
New Pedestal @ Sta 517+30.
(1) 12 FOC Encased in 2" PVC Duct.
36" Depth in ROW.
PED to be placed 1' from ROW.
Cable to be Placed 79' - 77' from C/L.

160' Bore Along Hwy 63 @ Sta 498+30 to Sta 499+90.
(1) 24 FOC Encased in 2" PVC Duct.
Cable to be placed 164' - 134' from C/L.
Cable will maintain 6'-8" off back of ROW.
36" Depth in ROW. 10' Below Bottom of Waterway

New PED @ Sta 502+40.
340' Bore Along Hwy 63 @ Sta 502+40 to Sta 505+80.
(1) 12 FOC Encased in 2" PVC Duct.
PED to be placed 1' from ROW.
Cable to be placed 94' - 114' from C/L.
Cable will maintain 6' - 8' from back of ROW.
36" Depth in ROW.

125' Bore Along Hwy 63 @ Sta 511+00 to Sta 512+25.
New PED @ Sta 511+00.
(1) 12 FOC Encased in 2" PVC Duct.
PED to be placed 1' from ROW.
Cable to be placed 89' - 87' from C/L.
36" Depth in ROW. 10' Below Bottom of Waterway.

Exit Hwy 63 via New PED @ Sta 517+30.
Leave ROW to feed private residence.

For Bench Mark Descriptions
See Sheet No. 33 A
For Control Point Reference Ties
See Sheet No. 33 C

Note: (1)
Sta. 524+00 to Sta. 530+00
Estimate 8,410 Cu. Yds. (Suitable) & 8,233 Cu. Yds.
Unsuit. available in Side borrow (Lt. & Rt.) to
be used on Project FN-2-8(6)

Iowa DOT One Call
One Call Ticket # 552001404 2/20/2020 - 3/11/2020

ANR PIPELINE COMPANY: NO RESPONSE
CITIZENS MUTUAL TELEPHONE: IN AREA
FARMERS MUTUAL TELEPHONE: NO RESPONSE
RATHBURN REGIONAL WATER: NO RESPONSE
SOUTHERN IOWA ELECTRIC COOP: NO RESPONSE
IOWA DOT: NO RESPONSE

General Notes:

- All Fiber will be placed 36" Deep in ROW and 48" Deep Under Roadway
 - All Fiber will be buried 10' below Waterways.
- Areas needing Tree/Brush removal will be cleared and removed from ROW.
 - Fiber to be placed 6'-8' from back of ROW.

PROPOSED PLOW: - - - - -
PROPOSED BORE: —————

