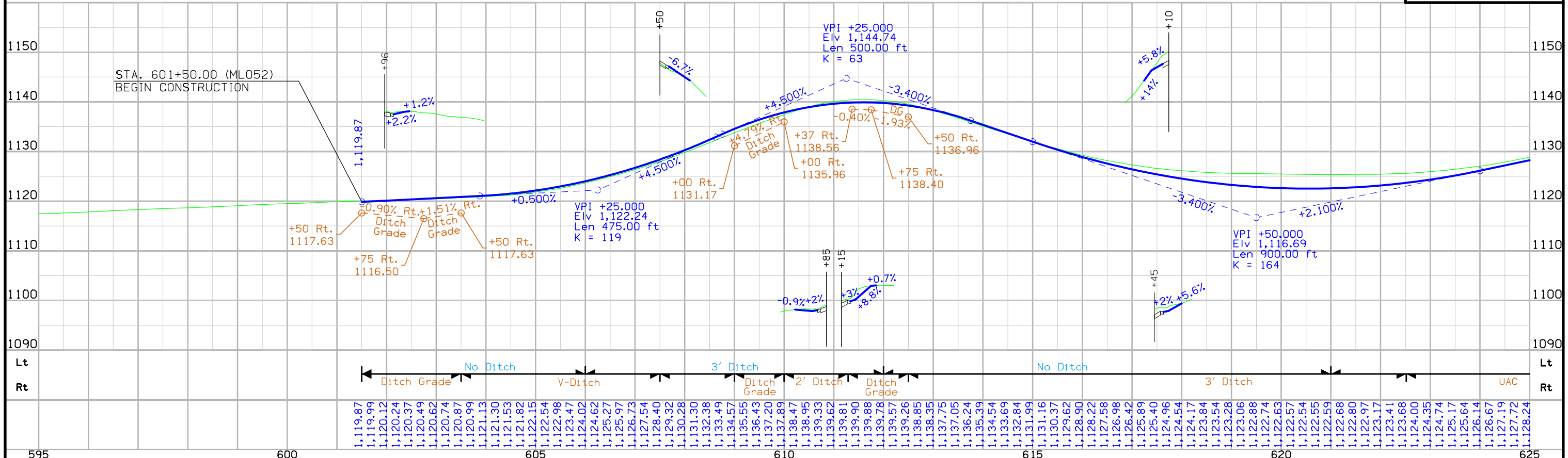


Curve Data  
 $\Delta = 35^\circ 41' 45.64" (LT)$   
 $T = 460.44$   
 $R = 890.91$   
 $E = 1,430.00$   
 $M = 72.30$

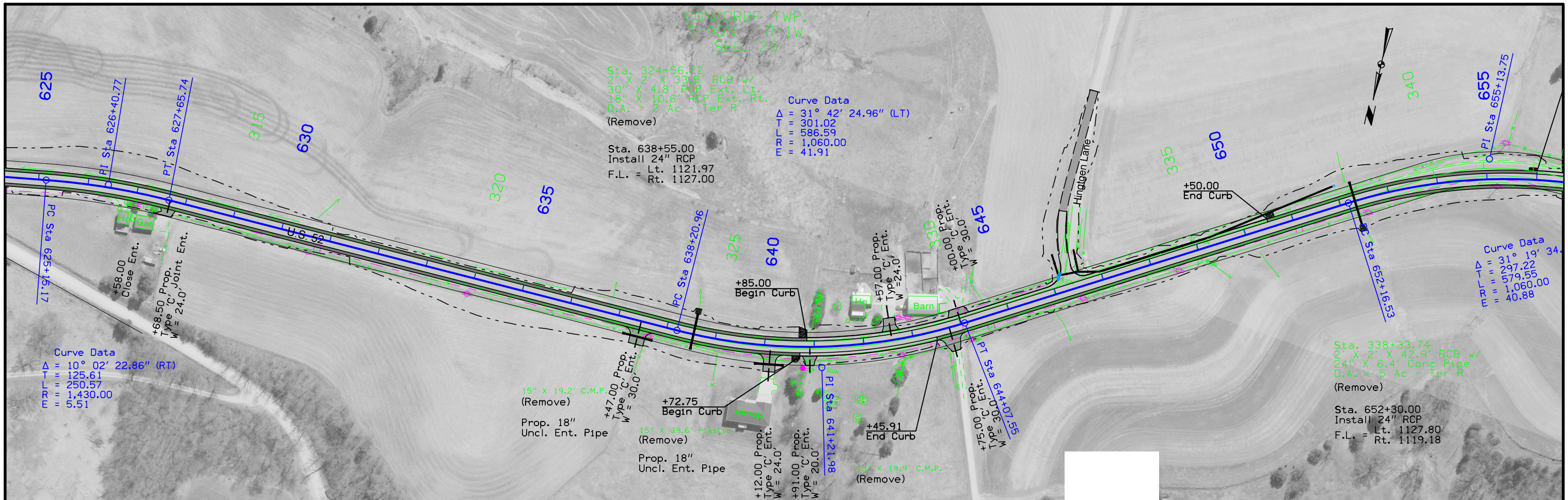
Curve Data  
 $\Delta = 20^\circ 40' 48.84" (RT)$   
 $T = 193.40$   
 $R = 382.59$   
 $E = 1,060.00$   
 $M = 17.50$

# U.S. 52

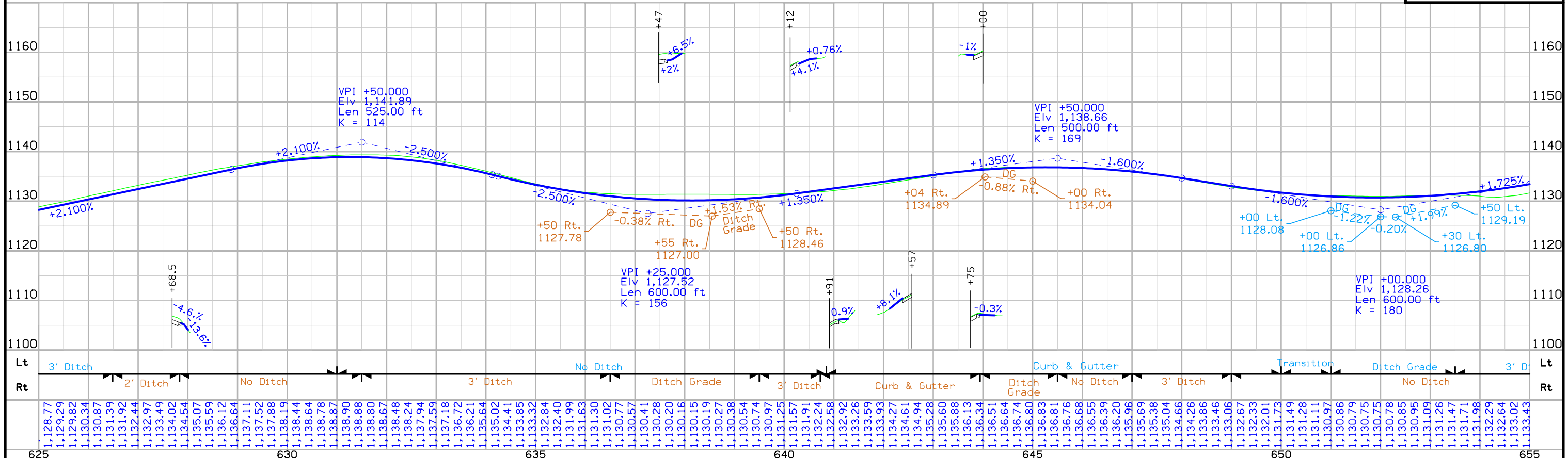


FILE NO.	ENGLISH	DESIGN TEAM	J1a \ Skogerboe	DUBUQUE COUNTY	PROJECT NUMBER	HSIPX-052-2(120)--3L-31	SHEET NUMBER	D.2
----------	---------	-------------	-----------------	----------------	----------------	-------------------------	--------------	-----





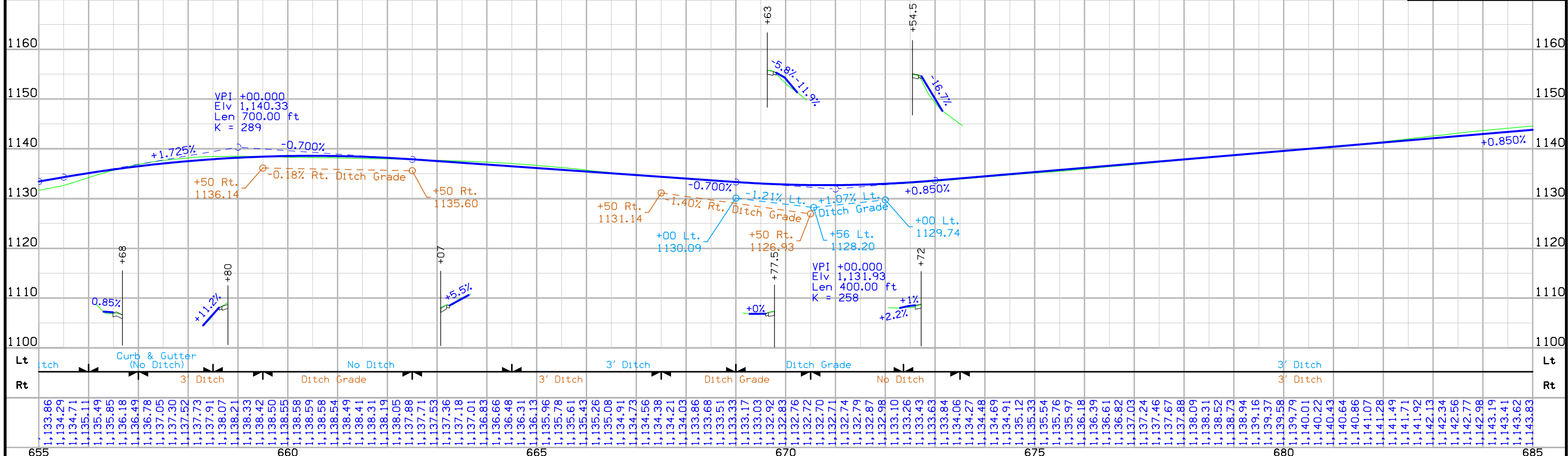
# U.S. 52



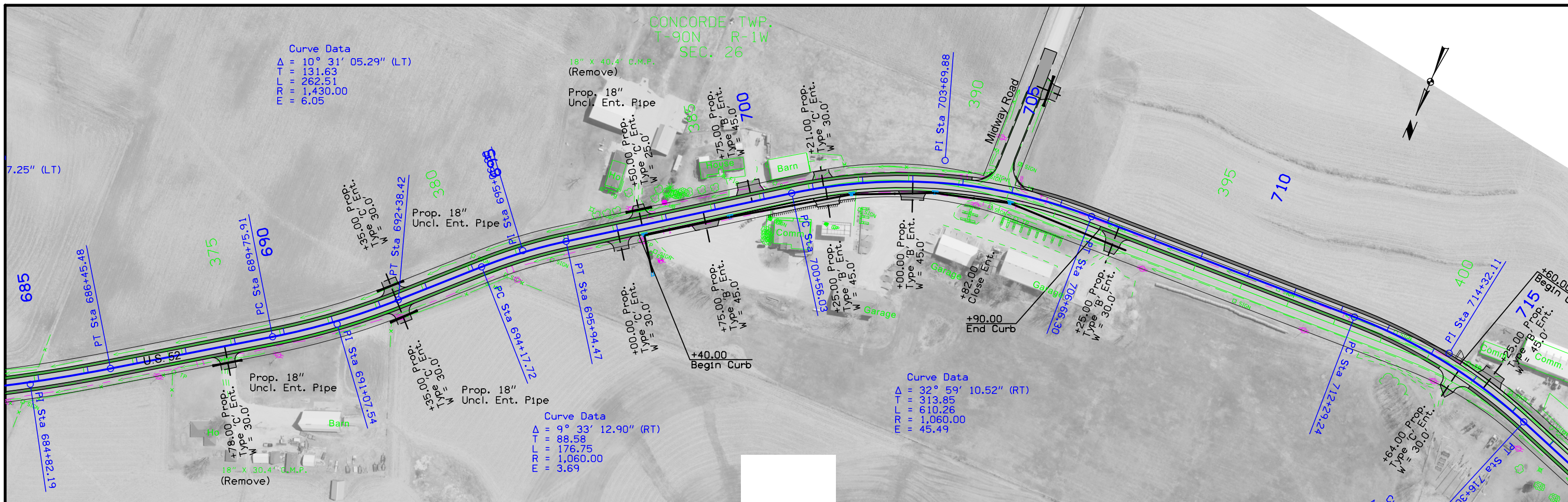




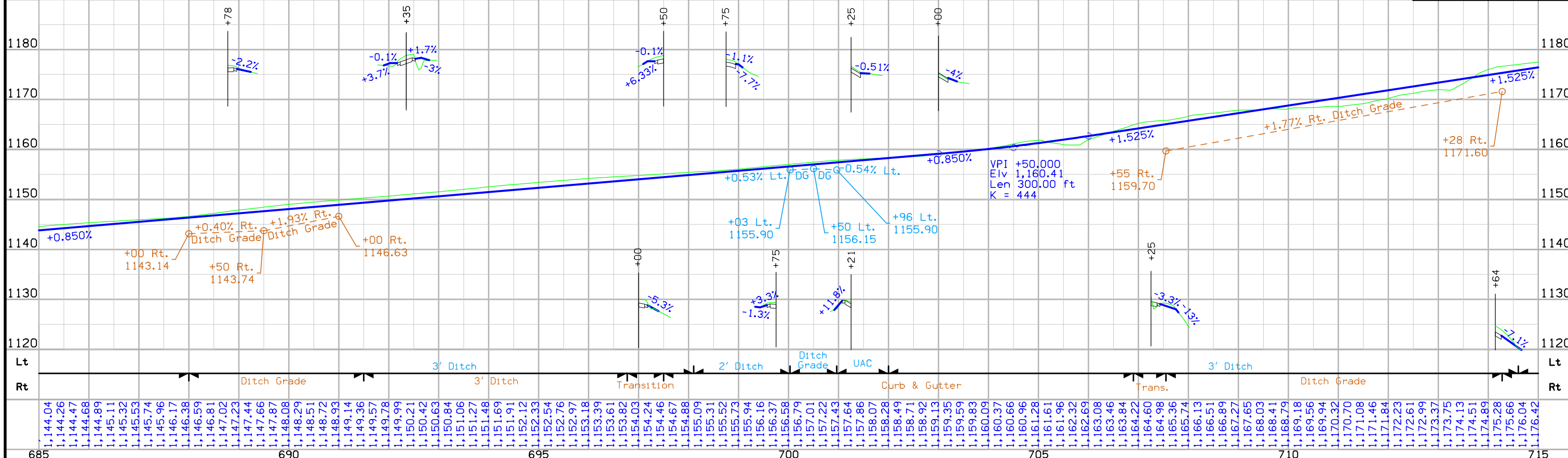
U.S. 52



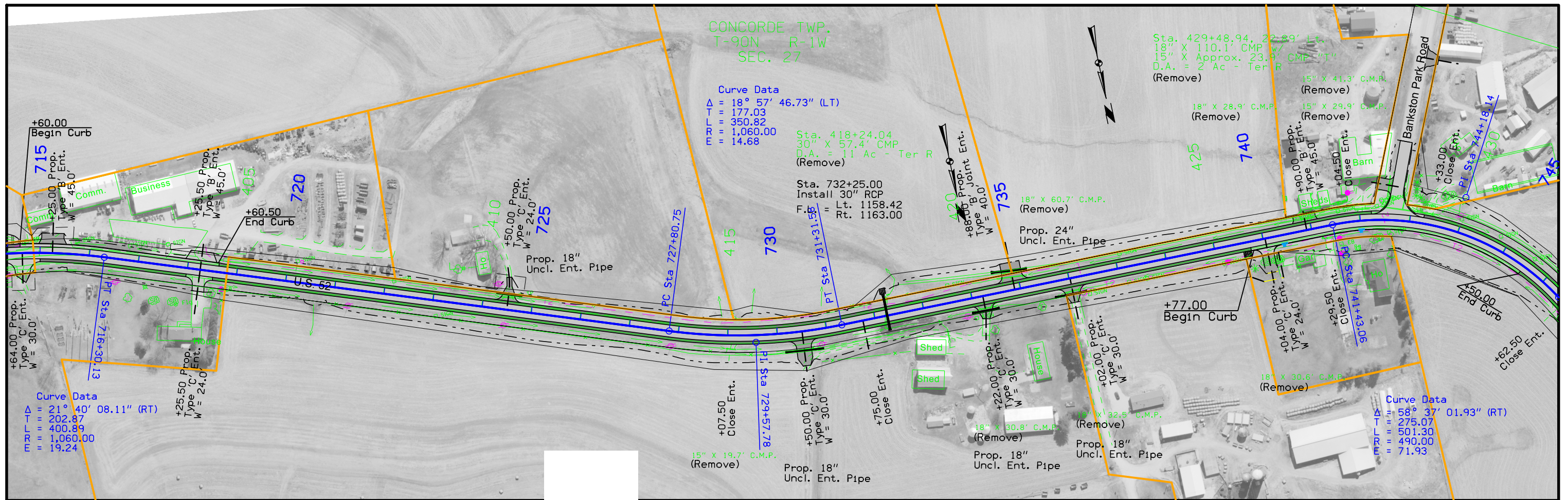




# U.S. 52







CONCORDE TWP.  
T-90N R-1W  
SEC. 27

Curve Data  
Δ = 18° 57' 46.73" (LT)  
T = 177.03  
L = 350.82  
R = 1,060.00  
E = 14.68

Sta. 418+24.04  
30" X 57.4" CMP  
D.A. = 11 Ac - Ter R  
(Remove)

Sta. 732+25.00  
Install 30" RCP  
F. = Lt. 1158.42  
Rt. 1163.00

Sta. 429+48.94, 22.89' Lt.  
18" X 110.1' CMP  
15" X Approx. 23.9' CMP  
D.A. = 2 Ac - Ter R  
(Remove)

15" X 41.3' C.M.P.  
(Remove)  
15" X 29.9' C.M.P.  
(Remove)

18" X 28.9' C.M.P.  
(Remove)

18" X 60.7' C.M.P.  
(Remove)

Prop. 24"  
Uncl. Ent. Pipe

420  
+88.00 Prop.  
Type 'B' Joint Ent.  
W = 40.0'

415

730

15" X 19.7' C.M.P.  
(Remove)

Prop. 18"  
Uncl. Ent. Pipe

18" X 30.8' C.M.P.  
(Remove)

Prop. 18"  
Uncl. Ent. Pipe

15" X 32.5' C.M.P.  
(Remove)

Prop. 18"  
Uncl. Ent. Pipe

18" X 30.6' C.M.P.  
(Remove)

Curve Data  
Δ = 58° 37' 01.93" (RT)  
T = 275.07  
L = 501.30  
R = 490.00  
E = 71.93

Curve Data  
Δ = 21° 40' 08.11" (RT)  
T = 202.87  
L = 400.89  
R = 1,060.00  
E = 19.24

+25.50 Prop.  
Type 'C' Ent.  
W = 24.0'

405

720

410

725

Prop. 18"  
Uncl. Ent. Pipe

415

730

420

735

+77.00  
Begin Curb

425

740

425

740

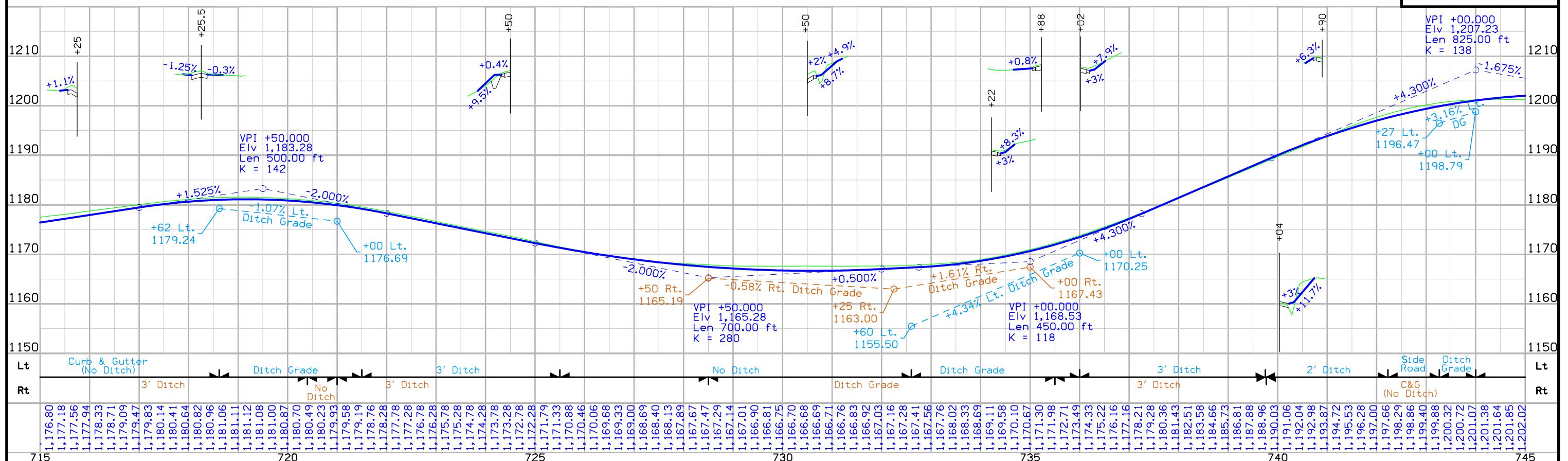
430

745

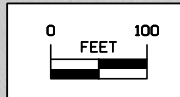
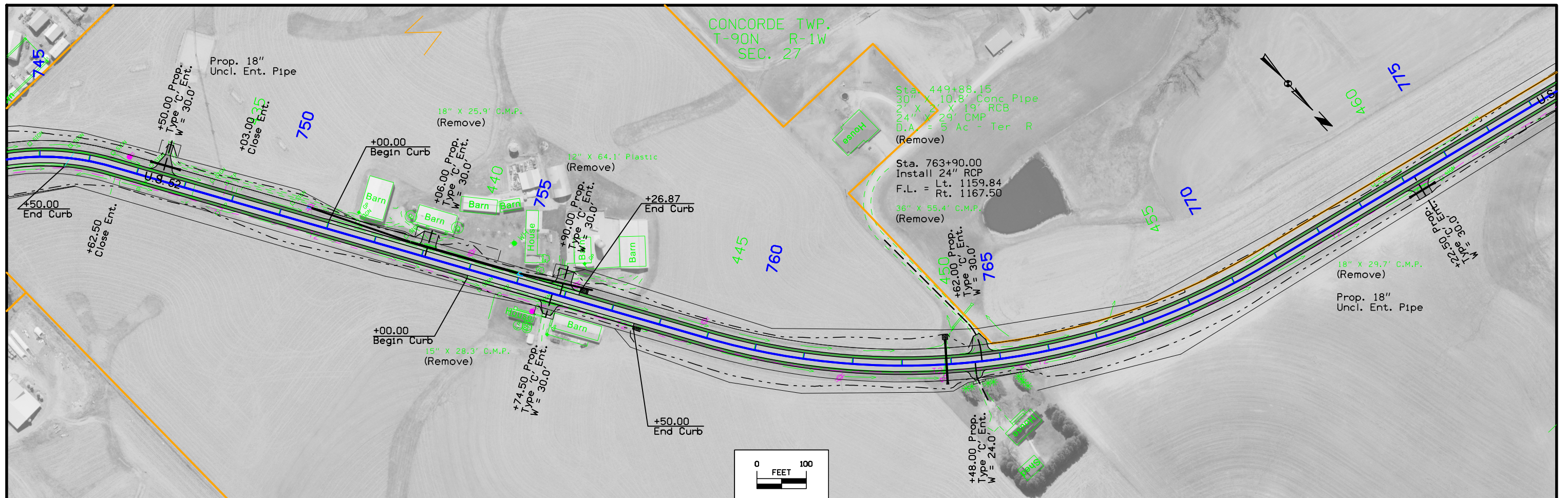
+50.00  
End Curb

+62.50  
Close Ent.

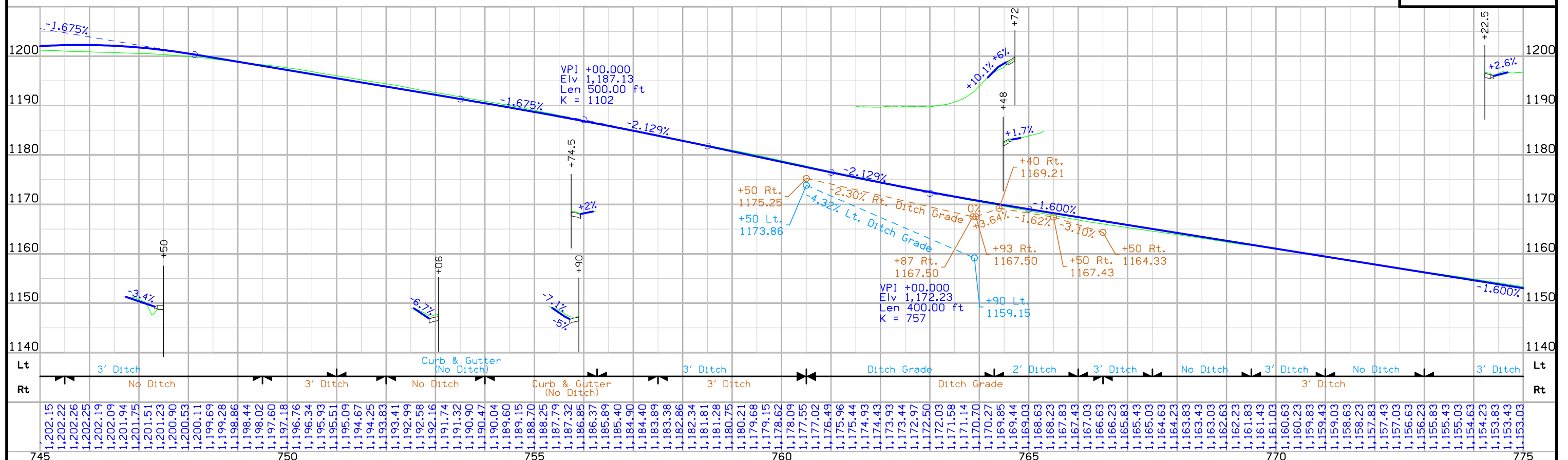
# U.S. 52



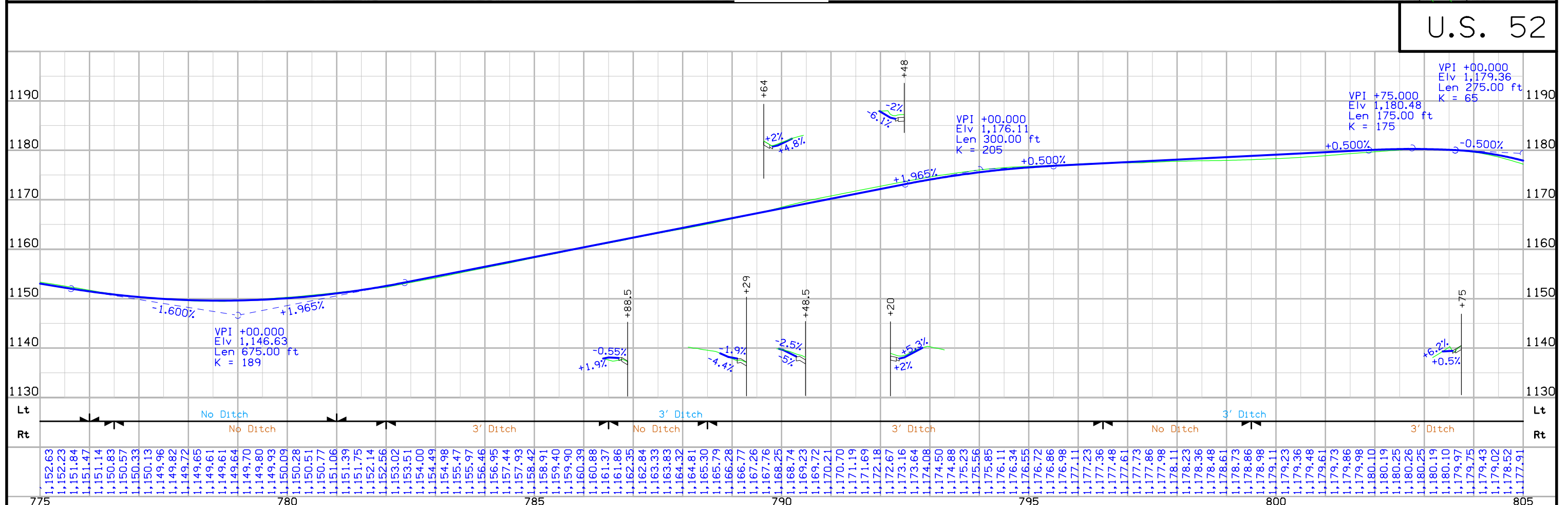
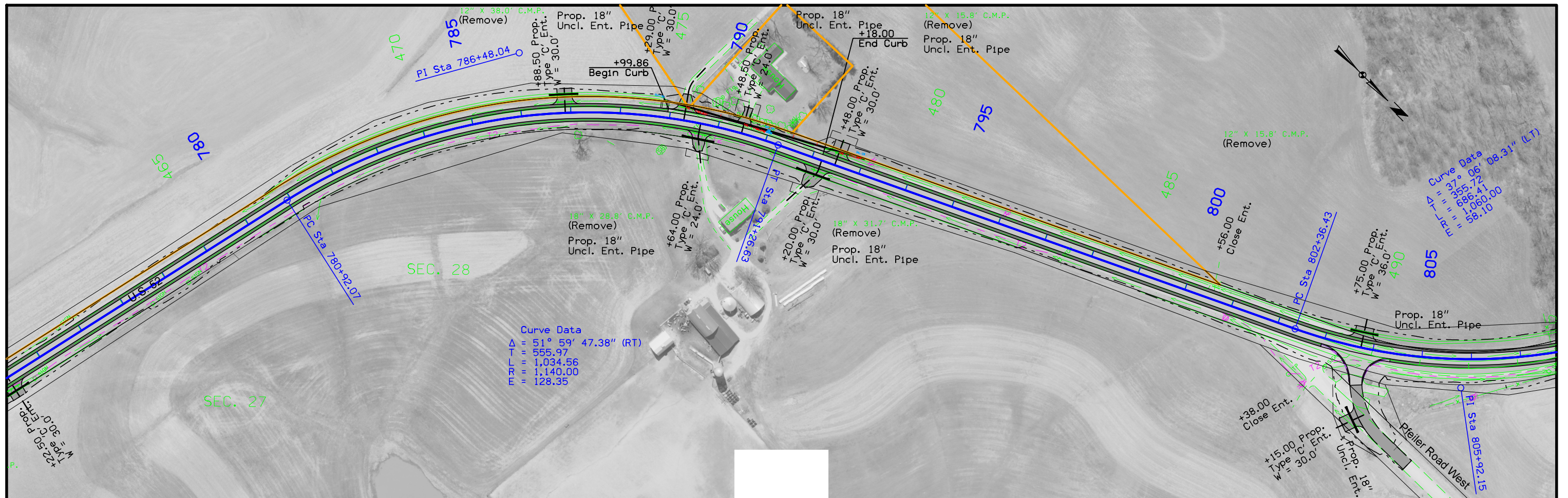




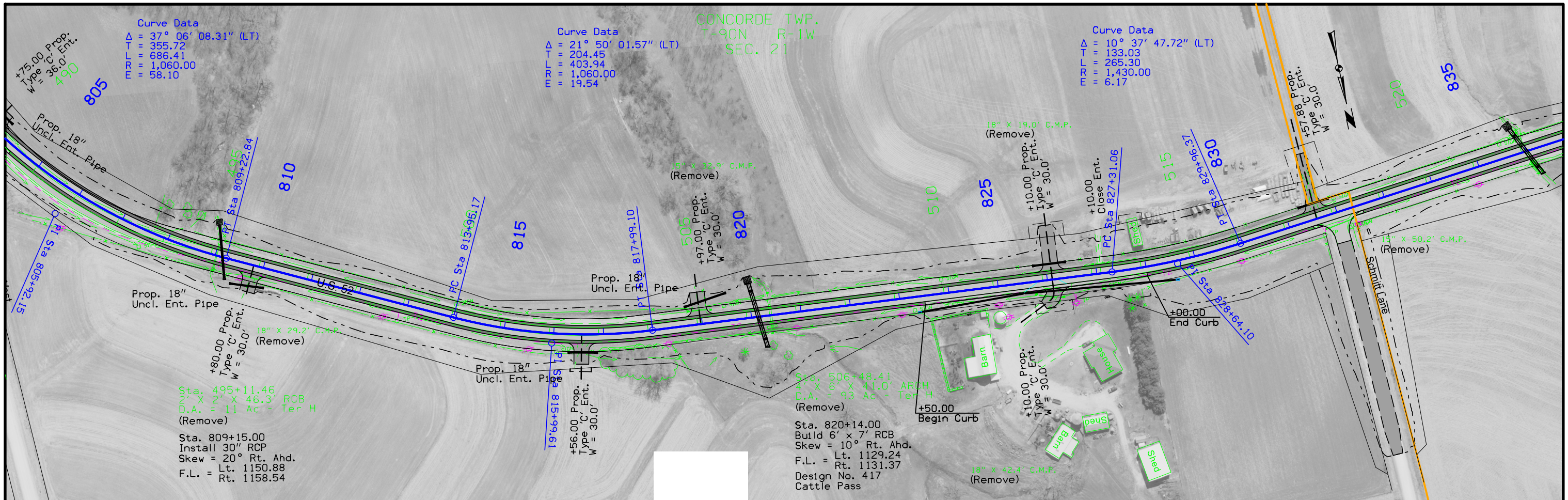
U.S. 52











U.S. 52

