

SHEET #2

**NOTES:**  
 1) CONTRACTOR TO FIELD VERIFY ALL DIMENSIONS AND ELEVATIONS PRIOR TO FABRICATION AND INSTALLATION.

**REFERENCE DRAWINGS:**

C	REVISED ROUTE OF PIPELINE NEAR BRIDGES	DED	08-31-12
B	REVISED ADJUSTMENTS TO PIPELINE	DED	04-19-12
A	FOR REVIEW	DED	03-20-12
NO.	REVISION	BY	DATE

NO.	REVISION	BY	DATE	APR
-----	----------	----	------	-----

**NuStar**  
 Energy L.P.

2330 Loop 1604 W  
 San Antonio, Texas 78248  
 Tel: (210) 918-2000  
 1-800-866-9060

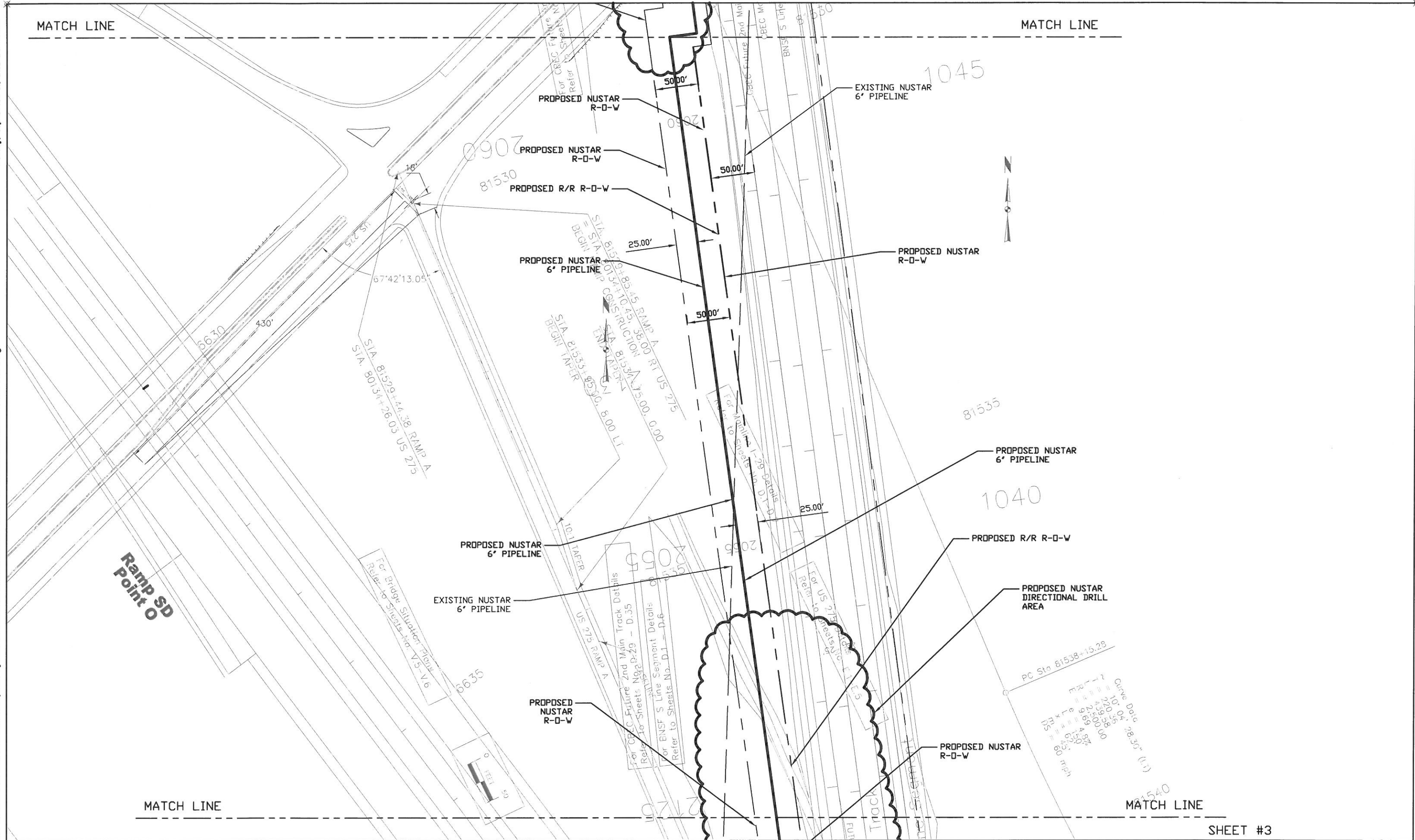
**PROJECT LOCATION:** POTTAWATTAMIE COUNTY, IOWA

<b>DRAWN BY:</b> DED	<b>DATE:</b> 03-20-12
<b>CHECKED:</b>	<b>DATE:</b>
<b>APPROVED:</b>	<b>DATE:</b>
<b>SCALE:</b> 1"=100'	

<b>IOWA DOT POINT 25 PROJECT</b>	
<b>PROPOSED NUSTAR ADJUSTMENTS</b>	
<b>6" COUNCIL BLUFFS TO BLENCOE STATION</b>	
ORIGINAL PROJECT NO.	
DRAWING NO. PROPOSED NUSTAR ADJ-1	REV. C

Monday, September 16, 2012 8:46:00 PM

\\FA\CENTRAL EAST REGION\SOPL - South & Central Pipeline Systems\PIPELINE\Mechanical\VA DOT - POINT 25 PROJECT\PROPOSED NUSTAR ADJ-1.dwg



MATCH LINE

MATCH LINE

SHEET #3

**NOTES:**  
 1) CONTRACTOR TO FIELD VERIFY ALL DIMENSIONS AND ELEVATIONS PRIOR TO FABRICATION AND INSTALLATION.

REFERENCE DRAWINGS:

NO.	REVISION	BY	DATE	APR
C	REVISED ROUTE OF PIPELINE NEAR BRIDGES	DED	08-31-12	
B	REVISED ADJUSTMENTS TO PIPELINE	DED	04-19-12	
A	FOR REVIEW	DED	03-20-12	

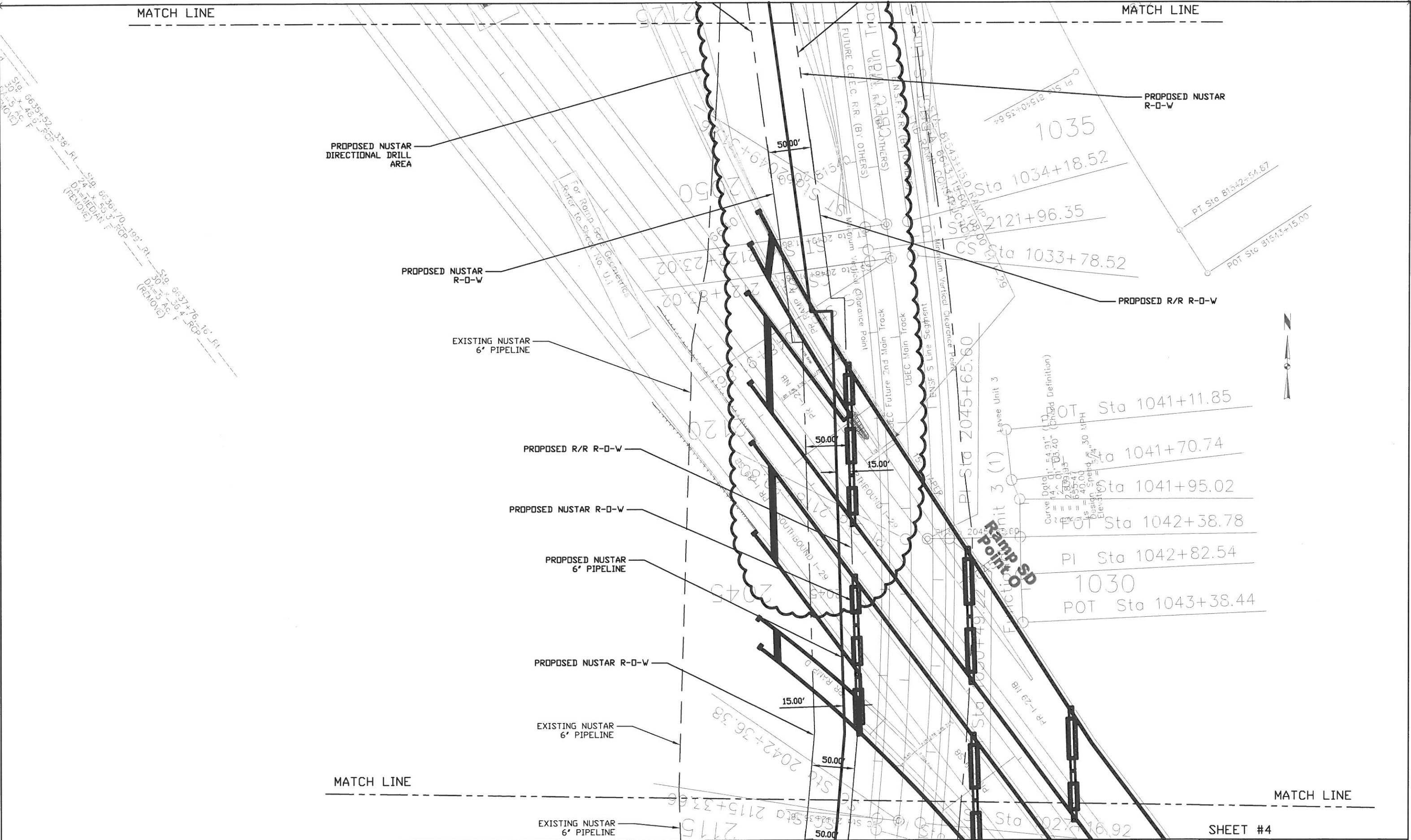
**NuStar**  
 Energy L.P.

2330 Loop 1604 W  
 San Antonio, Texas 78248  
 Tel: (210) 918-2000  
 1-800-866-9060

PROJECT LOCATION: POTTAWATTAMIE COUNTY, IOWA	
DRAWN BY: DED	DATE: 03-20-12
CHECKED:	DATE:
APPROVED:	DATE:
SCALE: 1"=100'	

IOWA DOT POINT 25 PROJECT <b>PROPOSED NUSTAR ADJUSTMENTS</b> <b>6" COUNCIL BLUFFS TO BLENCOE STATION</b>	
ORIGINAL PROJECT NO.	
DRAWING NO. PROPOSED NUSTAR ADJ-1	REV. C





**NOTES:**  
 1) CONTRACTOR TO FIELD VERIFY ALL DIMENSIONS AND ELEVATIONS PRIOR TO FABRICATION AND INSTALLATION.

**REFERENCE DRAWINGS:**

NO.	REVISION	BY	DATE	APR
C	REVISED ROUTE OF PIPELINE NEAR BRIDGES	DED	08-31-12	
B	REVISED ADJUSTMENTS TO PIPELINE	DED	04-19-12	
A	FOR REVIEW	DED	03-20-12	

NO.	REVISION	BY	DATE	APR

**NuStar**  
 Energy L.P.

2330 Loop 1604 W  
 San Antonio, Texas 78248  
 Tel: (210) 918-2000  
 1-800-866-9060

**PROJECT LOCATION:** POTTAWATTAMIE COUNTY, IOWA

<b>DRAWN BY:</b> DED	<b>DATE:</b> 03-20-12
<b>CHECKED:</b>	<b>DATE:</b>
<b>APPROVED:</b>	<b>DATE:</b>

**SCALE:** 1"=100'

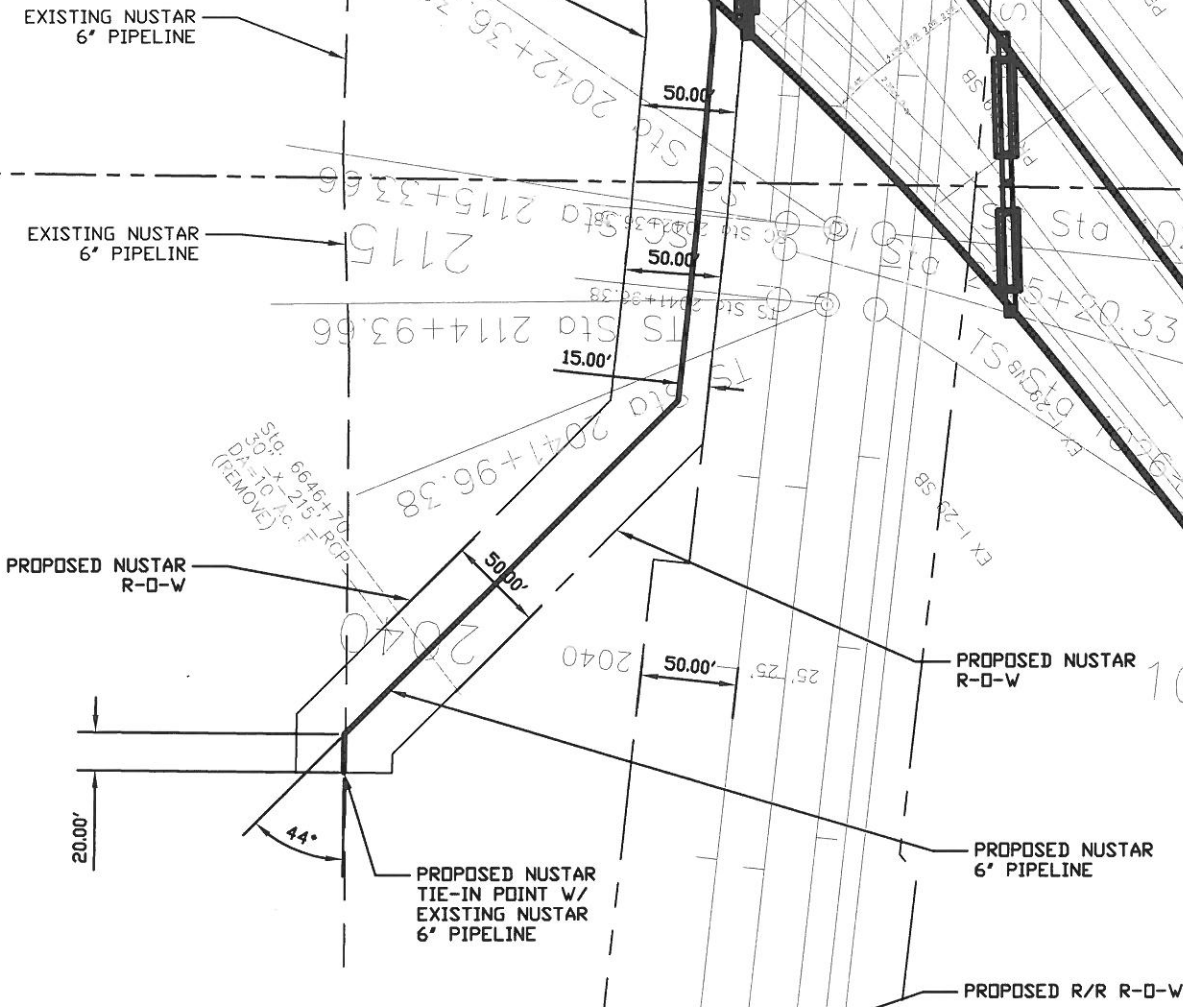
**SHEET #4**

**IOWA DOT POINT 25 PROJECT  
 PROPOSED NUSTAR ADJUSTMENTS  
 6" COUNCIL BLUFFS TO BLENCOE STATION**

ORIGINAL PROJECT NO.  
 DRAWING NO. PROPOSED NUSTAR ADJ-1 REV. C

MATCH LINE

MATCH LINE



Sta. 6647+52.85  
 Twin 1045'-0" x Variable  
 Girder Bridges

For SIRE Cross-over Details  
 Refer to Sheet No. D.68

For BNSF S Line Segment Details  
 Refer to Sheets No. D.1, D.6

Sta. 6651+41.32  
 Dual 454'-0" x Variable  
 Girder Bridges  
 (REMOVE)

SHEET #5

NOTES:  
 1) CONTRACTOR TO FIELD VERIFY ALL DIMENSIONS AND ELEVATIONS PRIOR TO FABRICATION AND INSTALLATION.

REFERENCE DRAWINGS:

NO.	REVISION	BY	DATE	APR
C	REVISED ROUTE OF PIPELINE NEAR BRIDGES	DED	08-31-12	
B	REVISED ADJUSTMENTS TO PIPELINE	DED	04-19-12	
A	FOR REVIEW	DED	03-20-12	



2330 Loop 1604 W  
 San Antonio, Texas 78248  
 Tel: (210) 918-2000  
 1-800-866-9060

PROJECT LOCATION: POTTAWATTAMIE COUNTY, IOWA	
DRAWN BY: DED	DATE: 03-20-12
CHECKED:	DATE:
APPROVED:	DATE:
SCALE: 1"=100'	

IOWA DOT POINT 25 PROJECT PROPOSED NUSTAR ADJUSTMENTS 6" COUNCIL BLUFFS TO BLENCOE STATION	
ORIGINAL PROJECT NO.	
DRAWING NO. PROPOSED NUSTAR ADJ-1	REV. C