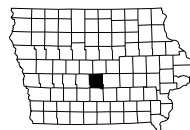


ITS INFRASTRUCTURE
IMN-080-4(105)125--0E-77

LETTING DATE
 01-17-2024

POLK COUNTY



PLANS OF PROPOSED IMPROVEMENT ON THE
INTERSTATE ROAD SYSTEM
POLK COUNTY

ITS INFRASTRUCTURE
 UNIVERSITY AVE TO N OF DOUGLAS AVE IN
 CLIVE AND URBANDALE - U.S. 6 / HICKMAN
 RD INTERCHANGE

SCALES: As Noted

Refer to the Proposal Form for list of applicable specifications.

Value Engineering Saves. Refer to Article 1105.14 of the Specifications.

For Project Location Map
 refer to Sheet A.2

REVISIONS

TOTAL

27

PROJECT IDENTIFICATION NUMBER

15-77-080-060

PROJECT NUMBER

IMN-080-4(105)125--0E-77

R.O.W. PROJECT NUMBER

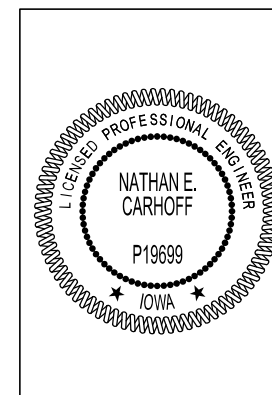
IMN-080-3(279)125--0E-77

INDEX OF SHEETS

No.	DESCRIPTION
A Sheets	Title Sheets
* A.1	Title Sheet
* A.2	Location Map Sheet
B Sheets	Typical Cross Sections and Details
B.1	Typical Cross Sections and Details
C Sheets	Quantities and General Information
C.1 - 2	Quantities and Tabulations
D Sheets	Mainline Plan and Profile Sheets
* D.1	Plan & Profile Legend & Information Sheet
* D.2 - 4	Plan & Profile Sheets
G Sheets	Survey Sheets
G.1	Reference Ties and Bench Marks
HE Sheets	Right-of-Way Sheets
* HE.1 - 3	Hickman Road (US 6)
J Sheets	Traffic Control and Staging Sheets
J.1	Traffic Control Plan and Staging Notes
U Sheets	500 Series, Mod.Stds. and Detail Sheets
U.1 - 4	500 Series, Modified Standards and Detail Sheets
W Sheets	Mainline Cross Sections
W.1	Cross Sections Legend & Symbol Information Sheet
W.2 - 9	Mainline Cross Sections
	* Color Plan Sheets

U.S. Hwy. 6	
DESIGN DATA RURAL	
20 - AADT	39,600 V.P.D.
20 - AADT	57,100 V.P.D.
20 - DHV	5,060 V.P.H.
TRUCKS	6 %
Total	
Design ESALs	-

I-35/80	
DESIGN DATA RURAL	
20 - AADT	108,600 V.P.D.
20 - AADT	163,400 V.P.D.
20 - DHV	15,610 V.P.H.
TRUCKS	13 %
Total	
Design ESALs	-

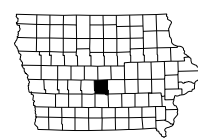
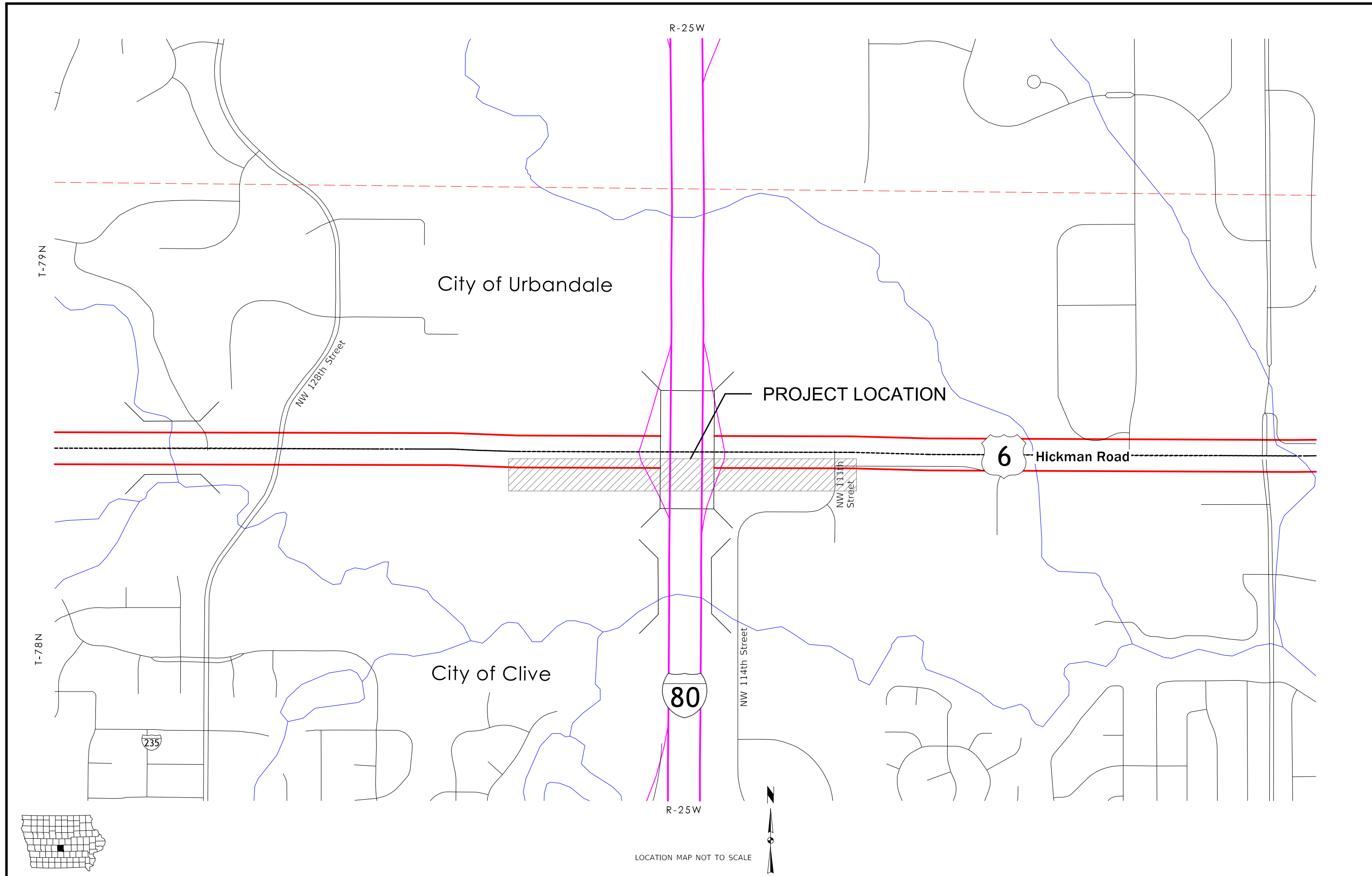


I hereby certify that this engineering document was prepared by me or under my direct personal supervision and that I am a duly licensed Professional Engineer under the laws of the State of Iowa.

Nathan E. Carhoff 11/07/23
 Nathan E. Carhoff, P.E. Date

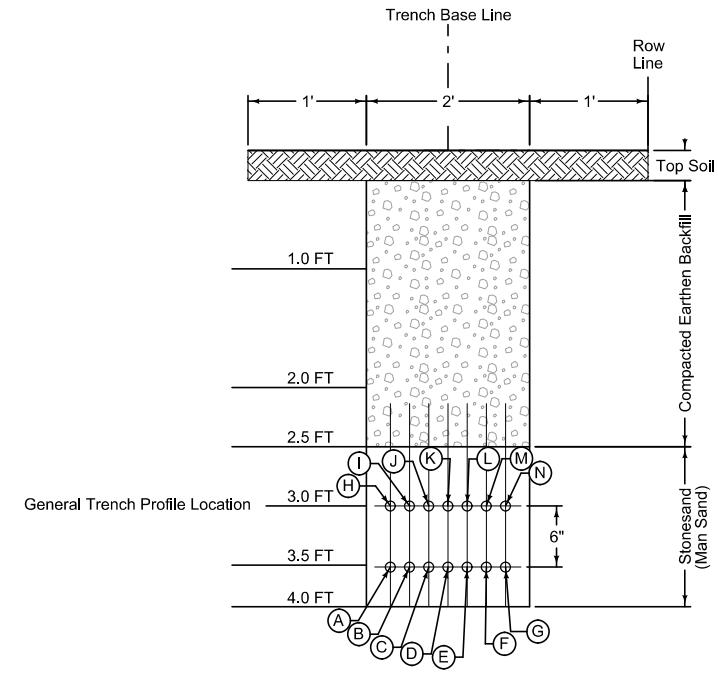
License Number P19699
 My License Renewal Date is December 31, 2023

Pages or sheets covered by this seal:
 ALL



GENERAL PROJECT NOTES

- COMPLETE ALL CONSTRUCTION IN ACCORDANCE WITH THE IOWA DOT STANDARD SPECIFICATIONS, THESE PROJECT PLANS, AND CONTRACT DOCUMENTS.
- NOTIFY CITY OF CLIVE, IOWA COMMUNICATIONS NETWORK, MID-AMERICAN ENERGY AND ENGINEER AT LEAST TWO (2) BUSINESS DAYS PRIOR TO THE START OF CONSTRUCTION. CONTACTS WILL BE PROVIDED AT PRE-CONSTRUCTION MEETING.
- NOTIFY IOWA ONE CALL AND UTILITY PROVIDERS PRIOR TO BEGINNING ANY CONSTRUCTION ACTIVITIES AND COORDINATE WITH UTILITY PROVIDERS AS NECESSARY DURING CONSTRUCTION. CONTRACTOR IS RESPONSIBLE FOR DETERMINING EXISTENCE, EXACT LOCATION, AND DEPTH OF ALL UTILITIES. PROTECT ALL ACTIVE UTILITY LINES AND STRUCTURES. ANY DAMAGES TO UTILITY ITEMS NOT SHOWN FOR REMOVAL OR MODIFICATION SHALL BE REPAIRED TO THE UTILITY OWNER'S SPECIFICATIONS AT THE CONTRACTOR'S EXPENSE.
- PROVIDE TEMPORARY SUPPORT FOR EXISTING UTILITY LINES THAT ARE ENCOUNTERED DURING CONSTRUCTION UNTIL BACKFILLING IS COMPLETED.
- ALL HOLES RESULTING FROM OPERATIONS OF THE CONTRACTOR, INCLUDING UTILITY LOCATING, SHALL BE FILLED AND COMPACTED TO FINISHED GRADE AS DIRECTED BY THE ENGINEER TO PREVENT FUTURE SETTLEMENT. THE VOIDS SHALL BE FILLED AS SOON AS PRACTICAL -PREFERABLY THE DAY CREATED AND NOT LATER THAN THE DAY AFTER CONSTRUCTION ACTIVITIES. ANY PORTION OF THE RIGHT-OF-WAY OR PROJECT LIMITS (INCLUDING BORROW AREAS AND OPERATION SITES) DISTURBED BY ANY SUCH OPERATIONS SHALL BE RESTORED TO AN ACCEPTABLE CONDITION. THIS OPERATION SHALL BE CONSIDERED INCIDENTAL TO OTHER BID ITEMS IN PROJECT.
- THE WORK LIMITS FOR THE PROJECT ARE WITHIN THE RIGHT OF WAY LINES AS SHOWN ON THE PLANS OR WITHIN CITY OWNED PROPERTY. CONFINE ALL CONSTRUCTION ACTIVITIES TO WITHIN THE CONSTRUCTION LIMITS.
- DO NOT STORE EQUIPMENT AND/OR MATERIALS ON PAVEMENT OR WITHIN PUBLIC RIGHT OF WAY (UNLESS PRIOR APPROVAL IS RECEIVED), ON STREETS, OR TRAILS OPEN TO TRAFFIC. CONTRACTOR SHALL PROVIDE AREAS AS NEEDED FOR STORAGE OF EQUIPMENT AND/OR MATERIALS OFF SITE.
- CONTRACTOR'S RESPONSIBLE TO PROVIDE OFF SITE WASTE AREAS OR DISPOSAL SITES FOR EXCESS MATERIAL (EXCAVATED MATERIAL OR BROKEN CONCRETE) WHICH IS NOT ALLOWED TO BE INCORPORATED INTO THE WORK INVOLVED ON THIS PROJECT AT NO ADDITIONAL COMPENSATION. CONTRACTOR RESPONSIBLE TO ENSURE THAT AREAS, INCLUDING HAUL ROADS, SELECTED FOR WASTE OR DISPOSAL NOT IMPACT CULTURALLY SENSITIVE SITES, GRAVES, WETLANDS OR "WATERS OF THE U.S.", INCLUDING STREAMS OR STREAM BANKS BELOW THE "ORDINARY HIGH WATER MARK", WITHOUT APPROVED U.S. ARMY CORPS OF ENGINEERS SECTION 404 PERMIT. NO PAYMENT FOR OVERHAUL WILL BE ALLOWED FOR MATERIAL HAULED TO THESE SITES. NO MATERIAL SHALL BE PLACED WITHIN THE RIGHT-OF-WAY, UNLESS STATED IN THE PLANS. ONLY NECESSARY IF UNDERGROUND EXCAVATION IS NEEDED.
- DO NOT RESTRICT DRAINAGE CHANNELS AND PROTECT ALL EXISTING DRAINAGE STRUCTURES UNLESS NOTED OTHERWISE. CONTRACTOR IS FULLY LIABLE FOR ALL DAMAGES TO PUBLIC OR PRIVATE PROPERTY CAUSED BY THEIR ACTION OR INACTION IN PROVIDING FOR THE HANDLING OF STORM WATER FLOW DURING CONSTRUCTION. PROTECT STORM SEWER SYSTEM FROM SEDIMENT/BORING FLUID INFILTRATION.
- DO NOT DISTURB GRASS AREAS AND TREES OUTSIDE THE CONSTRUCTION LIMITS. CONTRACTOR NOT PERMITTED TO PARK OR SERVICE VEHICLES AND EQUIPMENT OR USE THESE AREAS FOR STORAGE OF MATERIALS. STORAGE, PARKING, AND SERVICE AREAS(S) WILL BE SUBJECT TO THE APPROVAL OF THE ENGINEER.
- DIMENSIONS, BUILDING LOCATION, UTILITIES AND GRADING OF THIS SITE ARE BASED ON AVAILABLE INFORMATION AT THE TIME OF DESIGN. DEVIATIONS MAY BE NECESSARY IN THE FIELD. ANY SUCH CHANGES OR CONFLICTS BETWEEN THIS PLAN AND FIELD CONDITIONS ARE TO BE REPORTED TO THE ENGINEER PRIOR TO STARTING CONSTRUCTION. CONTRACTOR RESPONSIBLE FOR LAYOUT VERIFICATION OF ALL SITE IMPROVEMENTS PRIOR TO CONSTRUCTION.
- CONTRACTOR RESPONSIBLE FOR CLEANING DIRT AND DEBRIS FROM ROADWAY AND NEIGHBORING STREETS, DRIVEWAYS, AND SIDEWALKS CAUSED BY CONSTRUCTION ACTIVITIES DAILY OR BEFORE RAIN EVENT.
- CONTRACTOR TO VERIFY THE LOCATION AND CONDITION OF EXISTING CONDUIT AND NOTIFY ENGINEER OF ANY VARIANCES FROM THE PROPOSED PLAN PRIOR TO INSTALLATION OF CABLE. IN INSTANCES WHERE CONTRACTOR IS UNABLE TO UTILIZE EXISTING CONDUIT, CONTRACTOR SHALL RECEIVE APPROVAL FROM ENGINEER PRIOR TO INSTALLATION OF ADDITIONAL CONDUIT.
- ALL CONDUIT SHALL BE 2 INCH SCHEDULE 40 PVC OR HDPE.
- LABEL ALL HANDHOLES PER THE IDENTIFICATION TABLE. DO NOT PROVIDE CABLE HOOKS WITHIN HANDHOLES.
- INSTALL DUCT BANK AS SHOWN ON THE PLANS. BORING OF DUCT BANK IS REQUIRED UNDERNEATH THE INTERSTATE AND NW 111" ST. BORING UNDER THE ROADS CAN BE ACCOMPLISHED USING A SINGLE PULL OF ALL CONDUITS OR TWO SEPARATE PULLS OF HALF THE NUMBER OF CONDUITS EACH, SEPARATED BY FOUR (4) FEET. BORE ONE 2 INCH CONDUIT UNDERNEATH THE SOUTH APPROACH OF THE LIFETIME/LOVE'S INTERSECTION, EAST OF DUCT BANK 4, AND UNDER US HWY 6.
- INSTALL A 96-COUNT SINGLE MODE FIBER IN PATHWAY A FOR THE CITY OF CLIVE, CITY OF URBANDALE, AND IOWA COMMUNICATIONS NETWORK (ICN) FROM THE US HWY 6 & LIFETIME INTERSECTION TO THE EAST OF US HWY 6 & NW 111" ST INTERSECTION, AS SHOWN IN THE PLANS. FIBER OPTIC CABLE SHALL BE ARMORED SINGLE MODE LOOSE TUBE G.652 OR EQUIVALENT. SPLICE FIBER AT BOTH ENDS OF THE PATH. SPLICING DETAILS WILL BE PROVIDED AT THE PRE-CONSTRUCTION MEETING.
- SPLICE THE 96-COUNT CABLE TO AN EXISTING CABLE AT THE US HWY 6 & NW 111" ST INTERSECTION IN THE EXISTING HANDHOLE. SPLICING DETAIL WILL BE PROVIDED AT THE PRE-CONSTRUCTION MEETING.
- COIL 100 FEET OF FIBER OPTIC CABLE IN EACH TYPE IV HANDHOLE, UNLESS OTHERWISE IDENTIFIED (200 FEET OF SLACK REQUIRED AT HANDHOLE BANK 2 AND 3). COIL 30 FEET OF CABLE IN ANY OTHER HANDHOLE ENCOUNTERED.
- LABEL FIBER CABLE IN EACH HANDHOLE WITH A DURABLE TAG READING - CITY SM 96. EACH TAG SHALL SPECIFY THE DIRECTION THAT THE CABLE COMES FROM WHERE IT ENTERS EACH HANDHOLE.
- INSTALL MID-SHEATH SPLICE KITS (CLOSURES, TRAYS) IN HANDHOLE A OF HANDHOLE BANKS 2 AND 3 AT THE MIDDLE OF THE REQUIRED SLACK (100 FEET OF CABLE ON EACH SIDE OF CLOSURE). NO SPLICING WILL BE REQUIRED, BUT PREPARE THE DESIGNATED TUBE FOR FUTURE SPLICING AT EACH LOCATION. IDENTIFICATION OF THE TUBE WILL BE PROVIDED AT THE PRE-CONSTRUCTION MEETING.
- MODIFY THE EXISTING SPLICE AT THE NW 111" ST INTERSECTION. DISCONNECT THE EXISTING CABLES THAT ROUTE SOUTH TO CLIVE PUBLIC WORKS FROM THE EXISTING HUB CABINET LOCATED IN THE NE CORNER OF THE INTERSECTION. PULL THE EXISTING CABLE OUT THROUGH EXISTING CONDUITS AND HANDHOLES TO THE EXISTING HANDHOLE 4 LOCATED IN THE SE CORNER. ROUTE TWO EXISTING CABLES THROUGH CONDUIT FROM HUB CABINET TO THE EXISTING HANDHOLE 4 TO HANDHOLE BANK 4 (HANDHOLE A) THROUGH NEW CONDUIT BETWEEN HANDHOLES. MID-SHEATH SPLICE NEW 96-CT FIBER OPTIC CABLE TO EXISTING FIBER OPTIC CABLES PER SPLICING DETAIL (DETAIL TO BE PROVIDED) IN HANDHOLE BANK 4 (HANDHOLE A). PROVIDE NEW SPLICE CLOSURE.
- INSTALL ICN LOCATE PANEL NEAR EACH HANDHOLE BANK PER INSTRUCTIONS. ICN WILL PROVIDE PANEL AND INSTRUCTIONS.
- SPLICING OF FIBER AT EACH END WILL REQUIRE OVERNIGHT WORK IN ACCORDANCE WITH ICN REQUIREMENTS (8:00 PM TO 5:00 AM). NOTIFY ICN AND CLIVE AT LEAST TWO (2) WEEKS PRIOR TO WORK.



**Joint Utility Trench Detail - Trenched Construction
Hickman Road (U.S. 6)**

- Notes:
- Ensure backfill material is free of cinders, concrete, or other rubble.
 - Backfill material, shall, be compacted.
 - Install tracer wire and pull rope in each conduit.

I-35/I-80 & HICKMAN ROAD JOINT UTILITY TRENCH								
ID #	OWNER	CONDUIT SIZE (IN)	CONDUIT COLOR	NUMBER OF CONDUIT (EA)	WIRING	CONDUIT START	CONDUIT END	Conduit Length (FT)
A	CITY OF CLIVE/ICN	2	GREEN	1	PR	HH BANK 1	HH BANK 4	3,023
B	IOWA DOT	2	GREEN W/ BLUE STRIPE	1	PR	HH BANK 1	HH BANK 4	3,023
C	CONSOLIDATED	2	GREEN W/ BLACK STRIPE	1	PR	HH BANK 1	HH BANK 4	3,023
D	CONSOLIDATED	2	GREEN W/ BLACK STRIPE	1	PR	HH BANK 1	HH BANK 4	3,023
E	LUMEN	2	GREEN W/ RED STRIPE	1	PR	HH BANK 1	HH BANK 4	3,023
F	LUMEN	2	GREEN W/ RED STRIPE	1	PR	HH BANK 1	HH BANK 4	3,023
G	MCI/VERIZON	2	GREEN W/ YELLOW STRIPE	1	PR	HH BANK 1	HH BANK 4	3,023
H	MEDIACOM	2	GREEN W/ WHITE STRIPE	1	PR	HH BANK 1	HH BANK 4	3,023
I	WINDSTREAM	2	GREEN W/ GREY STRIPE	1	PR	HH BANK 1	HH BANK 4	3,023
J	METRONET	2	ORANGE	1	PR	HH BANK 1	HH BANK 4	3,023
K	METRONET	2	ORANGE	1	PR	HH BANK 1	HH BANK 4	3,023
L	FUTURE SPARE 1	2	ORANGE W/ BLUE STRIPE	1	PR	HH BANK 1	HH BANK 4	3,023
M	FUTURE SPARE 2	2	ORANGE W/ BLACK STRIPE	1	PR	HH BANK 1	HH BANK 4	3,023
N	FUTURE SPARE 3	2	ORANGE W/ GREEN STRIPE	1	PR	HH BANK 1	HH BANK 4	3,023
O	FUTURE SPARE 4	2	ORANGE W/ RED STRIPE	1	PR	HH BANK 2	HH BANK 3A	914
P	FUTURE SPARE 5	2	ORANGE W/ YELLOW STRIPE	1	PR	HH BANK 2	HH BANK 3A	914
Q	FUTURE SPARE 6	2	ORANGE W/ WHITE STRIPE	1	PR	HH BANK 2	HH BANK 3A	914
R	FUTURE SPARE 7	2	ORANGE W/ GREY STRIPE	1	PR	HH BANK 2	HH BANK 3A	914

**ESTIMATED PROJECT QUANTITIES
(UP TO A 5 DIVISION PROJECT)**

Division 1: Iowa DOT
Division 2: Clive/ICN Fiber Relocation and Reconnection

Item No.	Item Code	Item	Unit	Quantities												
				Estimated					As Built							
				Division 1	Division 2	Division 3	Division 4	Division 5	Total	Division 1	Division 2	Division 3	Division 4	Division 5		
1	2101-0850001	CLEARING AND GRUBBING	ACRE	0.2							0.2					
2	2101-0850002	CLEARING AND GRUBBING	UNIT	121.6							121.6					
3	2102-2625001	EMBANKMENT-IN-PLACE, CONTRACTOR FURNISHED	CY	180							180					
4	2105-8425015	TOPSOIL, STRIP, SALVAGE AND SPREAD	CY	30							30					
5	2518-0000010	ITS CONSTRUCTION SURVEY	LS	1							1					
6	2518-0000100	ITS HANDHOLE, 48x30x36	EACH	64		1					65					
7	2518-0000110	ITS HANDHOLE, REMOVE	EACH			1					1					
8	2518-0000120	ITS FIBER MARKER	EACH			2					2					
9	2518-0000130	ITS TEST STATION	EACH			4					4					
10	2518-0001200	ITS CONDUIT, HDPE, 2 INCH BORED	LF	18120		710					18830					
11	2518-0002200	ITS CONDUIT, HDPE, 2 INCH PLOWED	LF	28730		170					28900					
12	2518-0008096	FIBER OPTIC CABLE, 96 SM ARMORED	LF			5000					5000					
13	2518-0008370	FIBER OPTIC SPICE CLOSURE	EACH			4					4					
14	2518-0008375	EXISTING FIBER OPTIC SPLICE CLOSURE WORK	EACH			1					1					
15	2518-0008390	FIBER OPTIC SPLICE TRAY, 72	EACH			7					7					
16	2518-0008395	FIBER OPTIC SPLICE	EACH			168					168					
17	2518-0008400	FIBER OPTIC CABLE ACCEPTANCE TESTING	LS			1					1					
18	2526-9000000	GEOSPACIAL MAPPING OF SUB-SURFACE AND UNDERGROUND UTILITIES	LF	3090							3090					
19	2528-8445110	TRAFFIC CONTROL	LS	0.8		0.2					1					
20	2533-4980005	MOBILIZATION	LS	0.8		0.2					1					
21	2601-2634105	MULCHING, BONDED FIBER MATRIX	ACRE	0.8		0.1					0.9					
22	2602-0000312	PERIMETER AND SLOPE SEDIMENT CONTROL DEVICE, 12 IN. DIA.	LF	2090		390					2480					
23	2602-0010010	MOBILIZATIONS, EROSION CONTROL	EACH	2		1					3					

100-4A
10-29-02

ESTIMATE REFERENCE INFORMATION

Item No.	Item Code	Description
1	2101-0850001	CLEARING AND GRUBBING
2	2101-0850002	CLEARING AND GRUBBING Refer to tabulation 110-17.
3	2102-2625001	EMBANKMENT-IN-PLACE, CONTRACTOR FURNISHED Item for installation of hand holes at future grade. Provide embankment-in-place at hand hole bank 2. Refer to D-sheets and U-sheets for details. Calculation assumes a 20-foot wide, 60-foot long area. The use of excess material from trench/bore operations is allowed as approved by the engineer.
4	2105-8425015	TOPSOIL, STRIP, SALVAGE AND SPREAD Item for installation of hand holes at future grade. Strip, salvage and spread topsoil at hand hole bank 2. Calculation assumes a 20-foot wide, 60-foot long area at 8-inch strip and spread depth.
5	2518-0000010	ITS CONSTRUCTION SURVEY Construction survey includes equipment and supplies required for staking of the conduit path and associated structures. Provide stakes at a minimum 100-foot interval and clearly mark elevation and depth to the designed top of JUT/conduit profile. Clearly communicate with JUT/conduit installer what information is provided on the stakes. Refer to Developmental Specification DS-23040 for additional requirements.
6	2518-0000100	ITS HANDHOLE, 48x30x36 Install handholes at the locations shown on the plans. Refer to Developmental Specification DS-23040 for additional requirements.
7	2518-0000110	ITS HANDHOLE, REMOVE Remove existing hand hole at the location shown on the plan. Refer to Developmental Specification DS-23040 for additional requirements.
8	2518-0000120	ITS FIBER MARKER
9	2518-0000130	ITS TEST STATION Refer to D and U sheets for locations. Refer to Developmental Specification DS 23040 for additional requirements.
10	2518-0001200	ITS CONDUIT, HDPE, 2 INCH BORED Refer to D-Sheets for location, profile and additional information. Contractor allowed to install conduits under the interstate in one bore or install as two bores located 4-feet apart, centered on the alignment. Refer to Developmental Specification DS-23040 for additional requirements.

100-4A
10-29-02

ESTIMATE REFERENCE INFORMATION

Item No.	Item Code	Description
11	2518-0002200	ITS CONDUIT, HDPE, 2 INCH PLOWED Refer to D-Sheets for location and profile. Quantity includes all conduits installed via trenched methods. Refer to Developmental Specification DS-23040 for additional requirements.
12	2518-0008096	FIBER OPTIC CABLE, 96 SM ARMORED
13	2518-0008370	FIBER OPTIC SPICE CLOSURE
14	2518-0008375	EXISTING FIBER OPTIC SPLICE CLOSURE WORK
15	2518-0008390	FIBER OPTIC SPLICE TRAY, 72
16	2518-0008395	FIBER OPTIC SPLICE
17	2518-0008400	FIBER OPTIC CABLE ACCEPTANCE TESTING Refer to installation notes on sheet B.1 and Developmental Specification DS-23040 for additional requirements.
18	2526-9000000	GEOSPACIAL MAPPING OF SUB-SURFACE AND UNDERGROUND UTILITIES Mapping only required from hand hole bank 1 to hand hole bank 4. Refer to Developmental Specification DS-23045 for additional requirements.
19	2528-8445110	TRAFFIC CONTROL Provide traffic control as needed for material deliveries and installation purposes. Refer to J.1 for additional requirements.
20	2533-4980005	MOBILIZATION ---
21	2601-2634105	MULCHING, BONDED FIBER MATRIX Hydro mulch all disturbed area. Quantity based on 10-foot wide disturbed area along trenched portion of JUT, with adjustments for hand hole banks.
22	2602-0000312	PERIMETER AND SLOPE SEDIMENT CONTROL DEVICE, 12 IN. DIA. Refer to tabulation 100-19.
23	2602-0010010	MOBILIZATIONS, EROSION CONTROL ---

100-1D
10-18-05

PROJECT DESCRIPTION

Project includes installation of a multi-duct Joint Utility Trench (JUT) along the south side of U.S. Highway 6 (Hickman Road) from the east side of the Menards/Loves entrance to just east of NW 111th Street. Also included is installation and reconnection of fiber optic cable related to the City of Clive and ICN systems.

CLEARING AND GRUBBING

Location		Work and Material Type	Trees, Stumps, and Logs and Down Timber Material Diameters													All Other Materials		Estimated Quantities			Remarks
Station to Station or Ref. Loc. Sign to Ref. Loc. Sign or Description	Direction of Travel		3"-6"	>6"-9"	>9"-12"	>12"-15"	>15"-18"	>18"-24"	>24"-30"	>30"-36"	>36"-42"	>42"-48"	>48"-60"	>60"-72"	>72"	Length	Width	Units	Area	Herbicide Application	
			FT	FT	Units	Acres	Each														
Sta. 2+62 to Sta. 5+45		Trees - Clearing and Grubbing																0.1			
Sta. 5+60 to Sta. 8+25		Trees - Clearing and Grubbing																0.1			
Sta. 16+95		Trees - Clearing and Grubbing							1								29.0				
Sta. 16+96		Trees - Clearing and Grubbing							1								22.0				
Sta. 17+66		Trees - Clearing and Grubbing								1							29.0				
Sta. 23+08		Trees - Clearing and Grubbing				1											9.4				
Sta. 23+34		Trees - Clearing and Grubbing				1											9.4				
Sta. 24+07		Trees - Clearing and Grubbing				1											9.4				
Sta. 24+84		Trees - Clearing and Grubbing					1										6.7				
Sta. 25+16		Trees - Clearing and Grubbing					1										6.7				
Totals:																	121.6	0.2			

PERIMETER, SLOPE AND DITCH CHECK SEDIMENT CONTROL DEVICES

Possible Standards: EC-204

Location		Side	Perimeter and Slope Length of Installation			Ditch Check Length of Installation		Remarks
Begin Station	End Station		9 inch Dia	12 inch Dia	20 inch Dia	12 inch Dia	20 inch Dia	
			LF	LF	LF	LF	LF	
+00.00	8+26.00	LT		870				Wrap device around disturbed area at hand hole bank 1 and 2.
16+75.00	18+75.00	LT		220				Extend device beyond hand hole bank 3.
18+66.00	26+30.00	RT		770				
29+05.00	31+12.00	RT		230				Includes protection of storm sewer inlet.
Division 1 Total:				2090				
31+12.00	34+80.00	RT		390				
Division 2 Total:				390				Beyond hand hole bank 4 is division 2.

STANDARD ROAD PLANS

The following Standard Road Plans apply to construction work on this project.

Number	Date	Title
EC-204	10-19-21	Perimeter, Slope and Ditch Check Sediment Control Devices
TC-1	10-15-19	Work Not Affecting Traffic (Two-Lane or Multi-Lane)
TC-402	10-19-21	Work Within 15 ft of Traveled Way
TC-418	04-19-22	Lane Closure on Divided Highway

STANDARD ITS PLANS

The following Standard ITS Plans apply to construction work on this project.

Number	Date	Title
ITS-101	04-18-23	ITS Handholes
ITS-102	04-18-23	ITS Labeling

INCIDENTAL ITEMS

Special or unique items where method of measurement / basis of payment is not indicated in the specifications or other contract documents.

No.	Incidental Item	Unit	Quantity	Incidental To		Remarks
				Item Code	Item	
1	Snow Fence Protection at Hand Hole Bank 2	LF	160	2518-0000100	ITS HANDHOLE, 48x30x36	

**UTILITIES
(NOT A POINT 25 PROJECT)**

This is NOT a POINT 25 project and is not subject to the provisions of IAC 761-115.25.

SURVEY SYMBOLS

- Interstate Highway Symbol
- U.S. Highway Symbol
- Iowa Highway Symbol
- County Road Highway Symbol
- Evergreen Tree
- Deciduous Tree
- Fruit Tree
- Shrub (Bushes)
- Timber
- Hedge
- Stump
- Swamp
- Rock Outcrop
- Broken Concrete
- Revetment (Rip Rap)
- Cemetery
- Grave
- Cave
- Sink Hole
- Board Fence
- Chain Link or Security Fence
- Wire Fence
- Terrace
- Earth Dam or Dike (Existing)
- Tile Outlet
- Edge of Water
- Existing Drainage
- Right of Way Rail or Lot Corner
- Concrete Monument
- Well
- Windmill
- Beehive Intake
- Existing Intake
- Existing Utility Access (Manhole)
- Fire Hydrant
- Water Hydrant (Rural)
- Septic Tank
- Cistern
- L.P. Gas Tank (No Footing)
- Underground Storage Tank
- Latrine
- Satellite TV Dish

- WHU Water Hook Up
- RT Radio Tower
- TA Tower Anchor
- Guardrail (Beam or Cable)
- GP Guard Post (one or two)
- Guard Post (over two)
- FP Filler Pipe
- GV Gas Valve
- WV Water Valve
- SL Speed Limit Sign
- MM Mile Marker Post
- SIGN Sign
- TCB Traffic Signal Control Box
- RRB Rail Road Signal Control Box
- TSB Telephone Switch Box
- EB Electric Box

UTILITY LEGEND

- E1 MidAmerican Energy Company
Matthew Novy (515) 901-8274
Matthew.Novy@midamerican.com
- E2 City of Urbandale - Traffic Electric
John Larson (515) 331-6718
engpw@urbandale.org
- E3 City of Clive - Traffic Electric
Jerry Freestone (515) 223-6231
JFreestone@cityofclive.com
- E4 Iowa Department of Transportation (IDOT) Electric
Jason Dale (515) 239-1995
jason.dale@iowadot.us
- E5 GPRS - No Name Electric
- F0 Zayo - Fiber Optic
John Ferraresi (847) 417-9609
john.ferraresi@zayo.com
- F02 Lumen / CenturyLink - Fiber Optic
Ashlie Clements (906) 284-2821
Ashlie.Clements@lumen.com
- F03 MCI/Verizon - Fiber Optic
Grace Gilborn (515) 443-2865
Grace.Gilborn@verizon.com
- F04 Iowa Communications Network (INC) Fiber Optic
Timothy Flicknger (515) 491-3750
timothy.flickinger@iowa.gov
- F05 Windstream Communications - Fiber Optic
Mark Hussman (402) 677-5874
Mark.Hussman@Windstream.com
- F06 Unite Private Network - Fiber Optic
Wyatt Bohle (515) 361-0491
Wyatt.Bohle@upnfiber.com
- F07 Clive Traffic - Fiber Optic
Jerry Freestone (515) 223-6231
JFreestone@cityofclive.com

UTILITY LEGEND

- F08 Consolidated Communications - Fiber Optic
Phillip Williams (515) 418-1937
Phillip.Williams@consolidated.com
- F09 No Name (Unidentified) - Fiber Optic
- F010 Aureon - Fiber Optic
Jeff Klocko (515) 830-0445
jeff.klocko@aureon.com
- F011 Mediacom - Fiber Optic
Jerry Broughton (515) 246-2252
jbroughton@mediacomcc.com
- F013 Metronet - Fiber Optic
Jeff Talbert (563) 505-1856
Jeff.Talbert@metronet.com
- G MidAmerican Energy - Gas Line
Matthew Novy (515) 901-8274
Matthew.Novy@midamerican.com
- G2 Unknown - Gas Line
- GHP MidAmerican Energy - High Pres Gas Line
Matthew Novy (515) 901-8274
Matthew.Novy@midamerican.com
- MidAmerican Energy - Riser Pole
Matthew Novy (515) 901-8274
Matthew.Novy@midamerican.com
- MidAmerican Energy - Power Pole
Matthew Novy (515) 901-8274
Matthew.Novy@midamerican.com
- SAN City of Clive - Sanitary Sewer
Jim Hagelie (515) 223-6231
JHagelie@cityofclive.com
- SAN.2 Des Moines Waste Water- Sanitary Sewer
Patrick Brown (515) 323-8027
PABrown@dmgov.org
- SAN.3 City of Urbandale - Sanitary Sewer
John Larson (515) 331-6718
engpw@urbandale.org
- ST S Storm Sewer Co. 1
- T1 CenturyLink - Telephone Line
Ashlie Clements (906) 284-2821
Ashlie.Clements@lumen.com
- T2 Comm Data Link - Telephone Line
- TV Mediacom - TV Cable
Jerry Broughton (515) 246-2252
jbroughton@mediacomcc.com
- TV2 Proposed Route - TDI Cable TV Cable
- W Clive Public Works Water - Water Line
Jim Hagelie (515) 223-6231
JHagelie@cityofclive.com
- W2 Urbandale Water - Water Line
Gail Palmer (515) 278-3940
gpalmer@urbandalewater.org
- W3 Des Moines Water Works - Water Line
Carla Schumacher (515) 323-6227
cschumacher@dmww.com

PLAN VIEW COLOR LEGEND OF PLAN AND PROFILE SHEETS

LINEWORK		Design Color No.	
Green	(2)		Existing Topographic Features and Labels
Blue	(1)		Proposed Alignment, Stationing, Tic Marks, and Alignment Annotation
Magenta	(5)		Existing Utilities
SHADING		Design Color No.	
Lavender	(9)		Temporary Pavement Shading
Yellow	(4)		Proposed Pavement Shading
Orange	(6)		Proposed Granular Shading
Orange	(70)		Proposed Shoulder Granular Shading
Yellow	(68)		Proposed Shoulder Paved Full Depth Shading
Yellow	(132)		Proposed Shoulder Paved Partial Depth Shading
Gray, Dark	(112)		Proposed Grade and Pave Shading "In conjunction with a paving project"
Brown, Light	(236)		Grading Shading
Orange, Light	(134)		Proposed Granular Entrance Shading
Yellow	(220)		Proposed Paved Entrance Shading
Tan	(8)		Proposed Sidewalk Shading
Blue, Light	(230)		Proposed Sidewalk Landing Shading
Pink	(11)		Proposed Sidewalk Ramp Shading
Green, Light	(225)		Existing Pavement Shading
Red	(3)		Proposed Structure Shading
Red	(3)		Delineates Restricted Areas

PROFILE VIEW COLOR LEGEND OF PLAN AND PROFILE SHEETS

LINEWORK		Design Color No.	
Green	(10)		Existing Ground Line Profile
Blue	(1)		Proposed Profile and Annotation
Magenta	(5)		Existing Utilities
Blue, Light	(230)		Proposed Ditch Grades, Left
Black	(0)		Proposed Ditch Grades, Median
Rust	(14)		Proposed Ditch Grades, Right

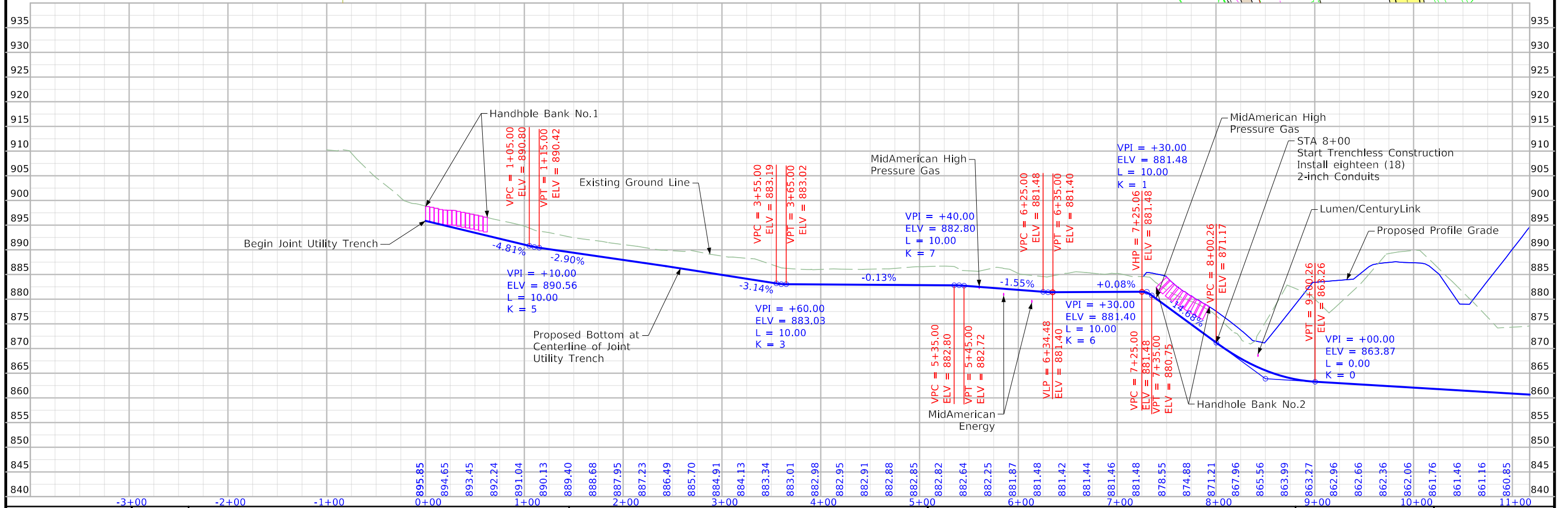
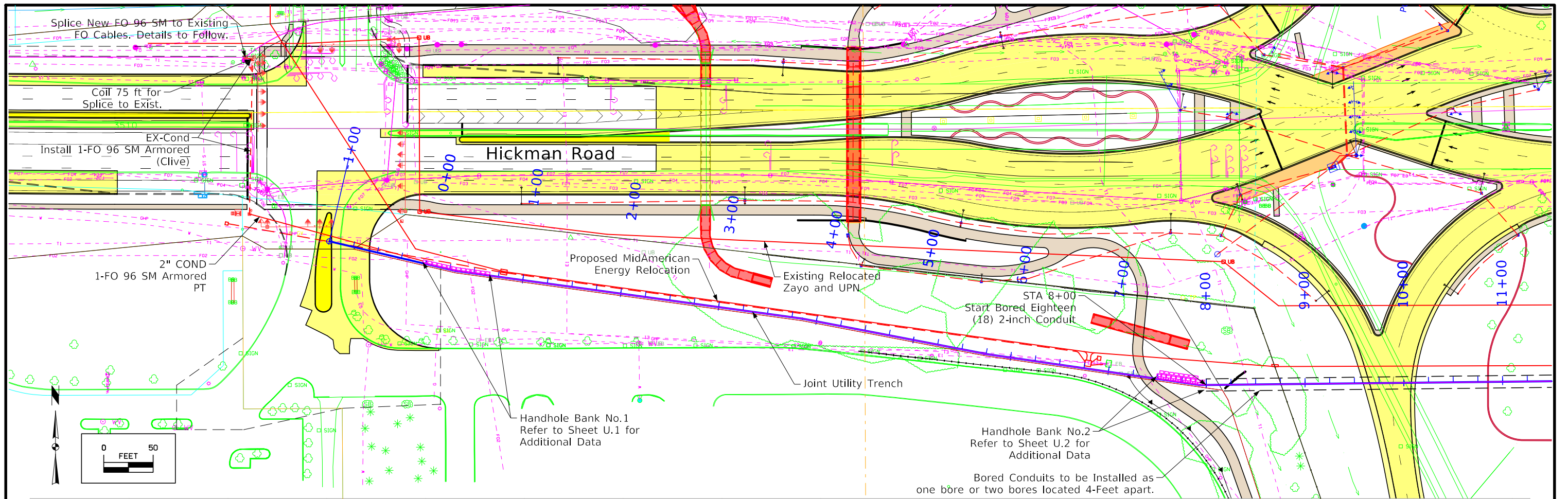
- Reference Point
- Station
- Survey Line
- Section Corner
- Ground Line Intercept
- Saw Cut
- Guardrail
- Trench Drain
- High Tension Cable Guardrail
- Sheet Pile
- Pavement Removal
- Clearing & Grubbing Area

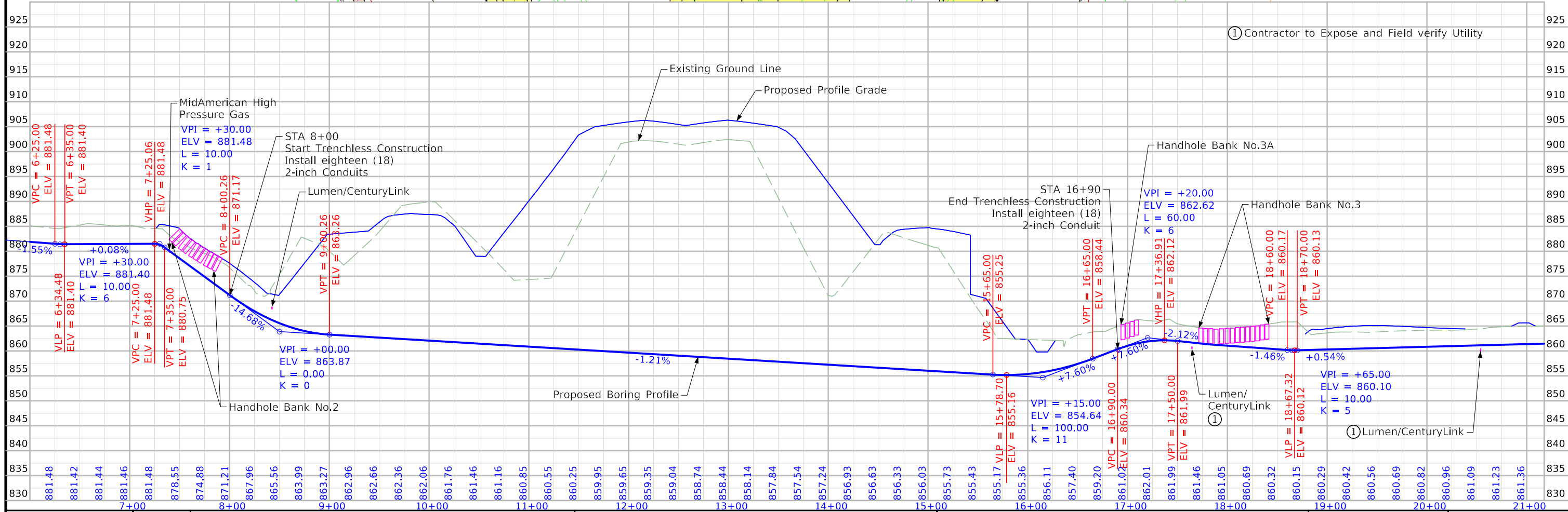
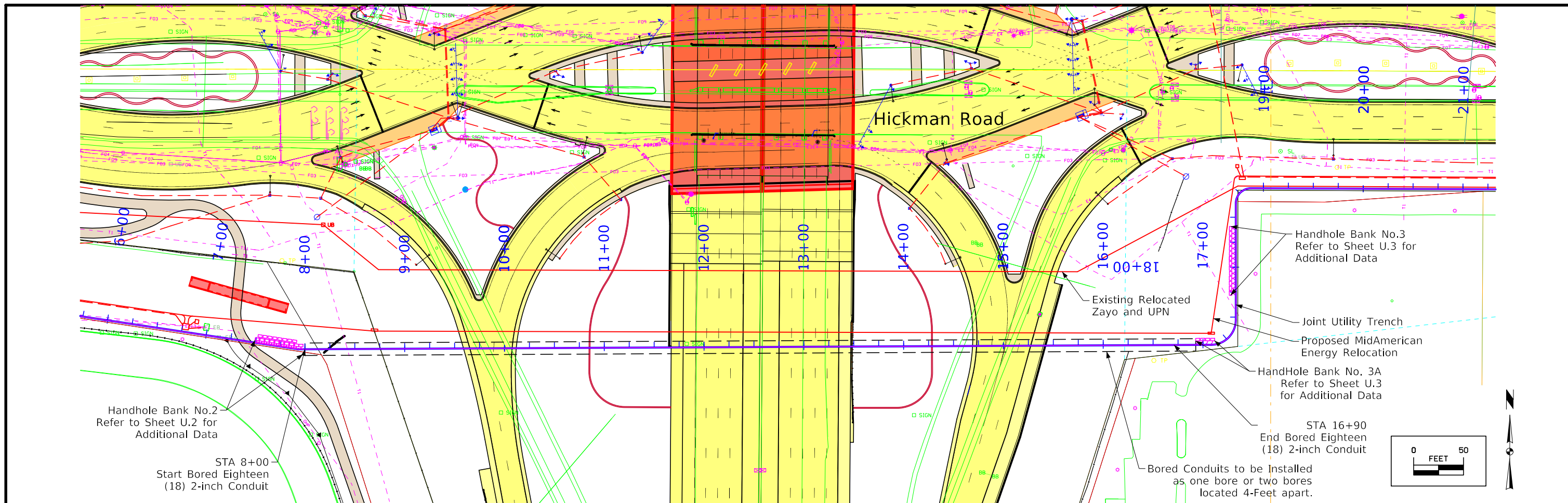
RIGHT-OF-WAY LEGEND

- Proposed Right-of-Way
- Existing Right of Way
- Existing and Proposed Right-of-Way
- Easement and Existing Right-of-Way
- Easement (Temporary)
- Easement
- C/A Access Control
- Property Line

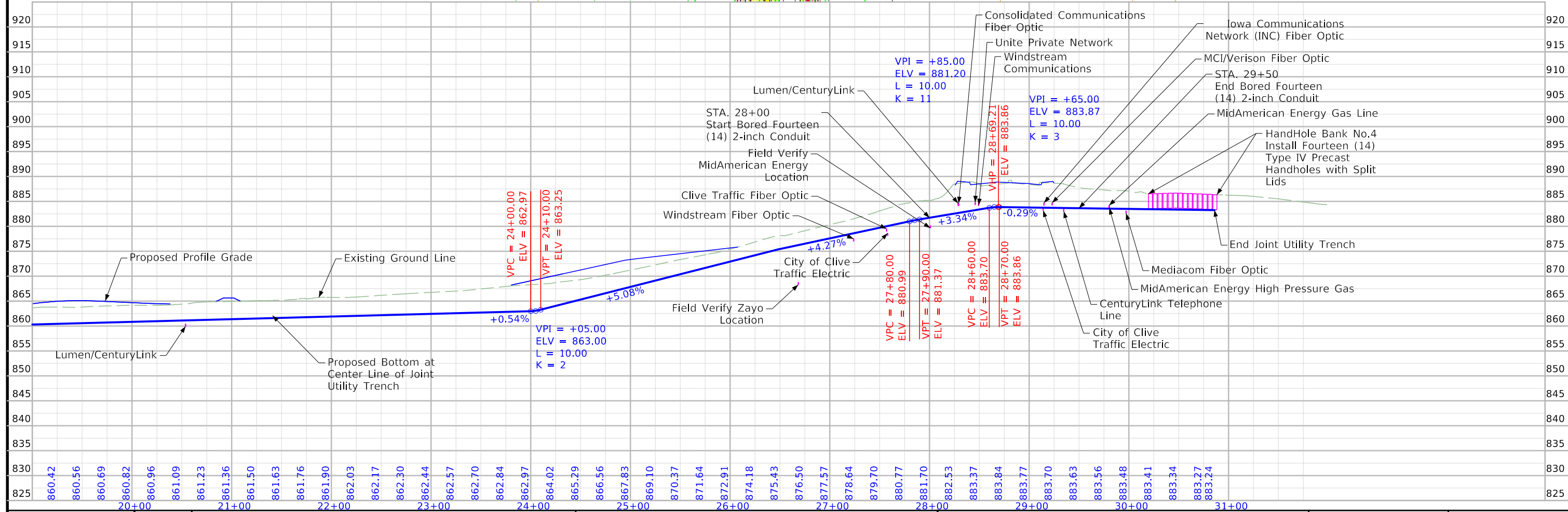
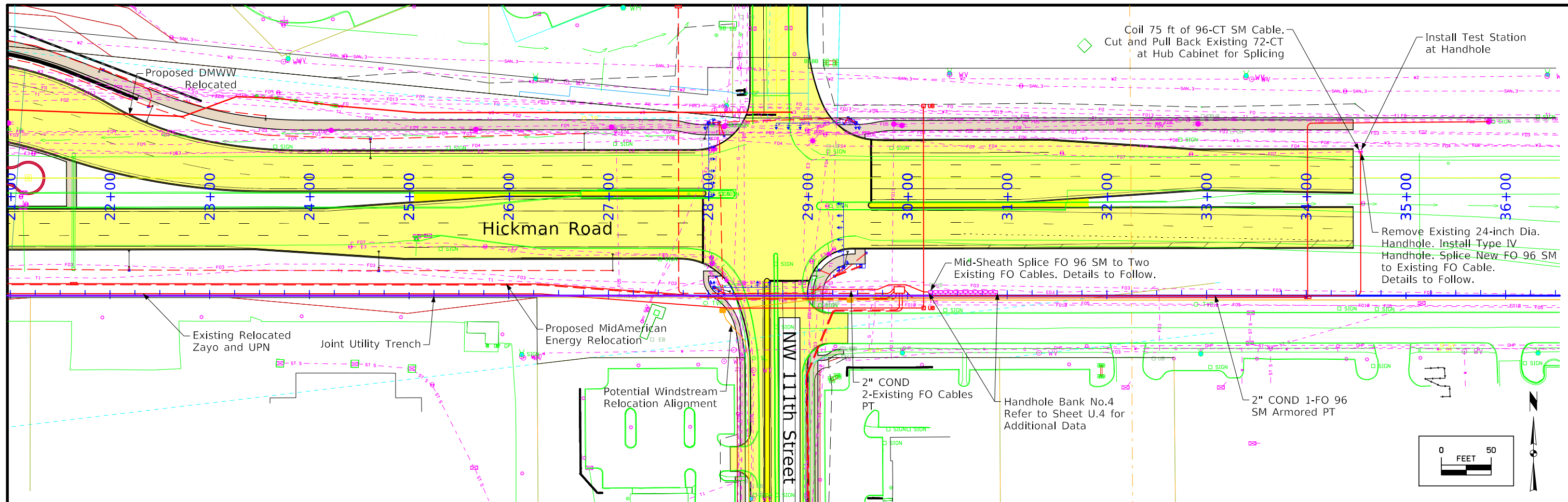
PLAN AND PROFILE LEGEND AND SYMBOL INFORMATION SHEET

(COVERS SHEET SERIES D, E, F, & K)





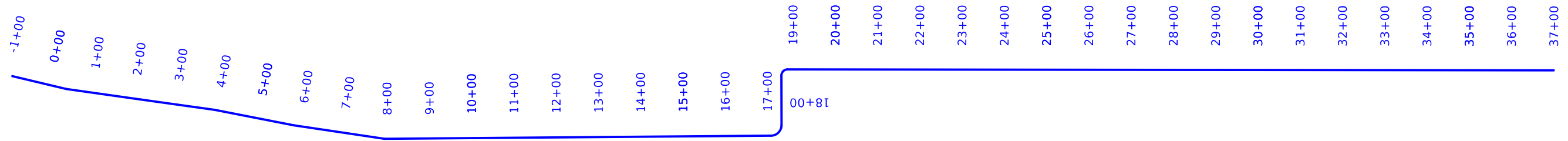
FILE NO.	ENGLISH	DESIGN TEAM	Snyder & Associates, Inc.	POLK COUNTY	PROJECT NUMBER	IMN-080-4(105)125--0E-77	SHEET NUMBER	D.3
----------	---------	-------------	---------------------------	-------------	----------------	--------------------------	--------------	-----



FILE NO.	ENGLISH	DESIGN TEAM	Snyder & Associates, Inc.	Polk COUNTY	PROJECT NUMBER	IMN-080-4(105)125--0E-77	SHEET NUMBER	D.4
----------	---------	-------------	---------------------------	-------------	----------------	--------------------------	--------------	-----

7:26:16 AM 12/23/2023 ncarhoff pw:\projectwise.dot.int.lan:PWM\Documents\Projects\7708006015\Design\105_JUTCADD_Files\Sheet_Files\SHT_77080264Z08_JUT_D01.dgn

Changed by Addenda 17JAN353A01

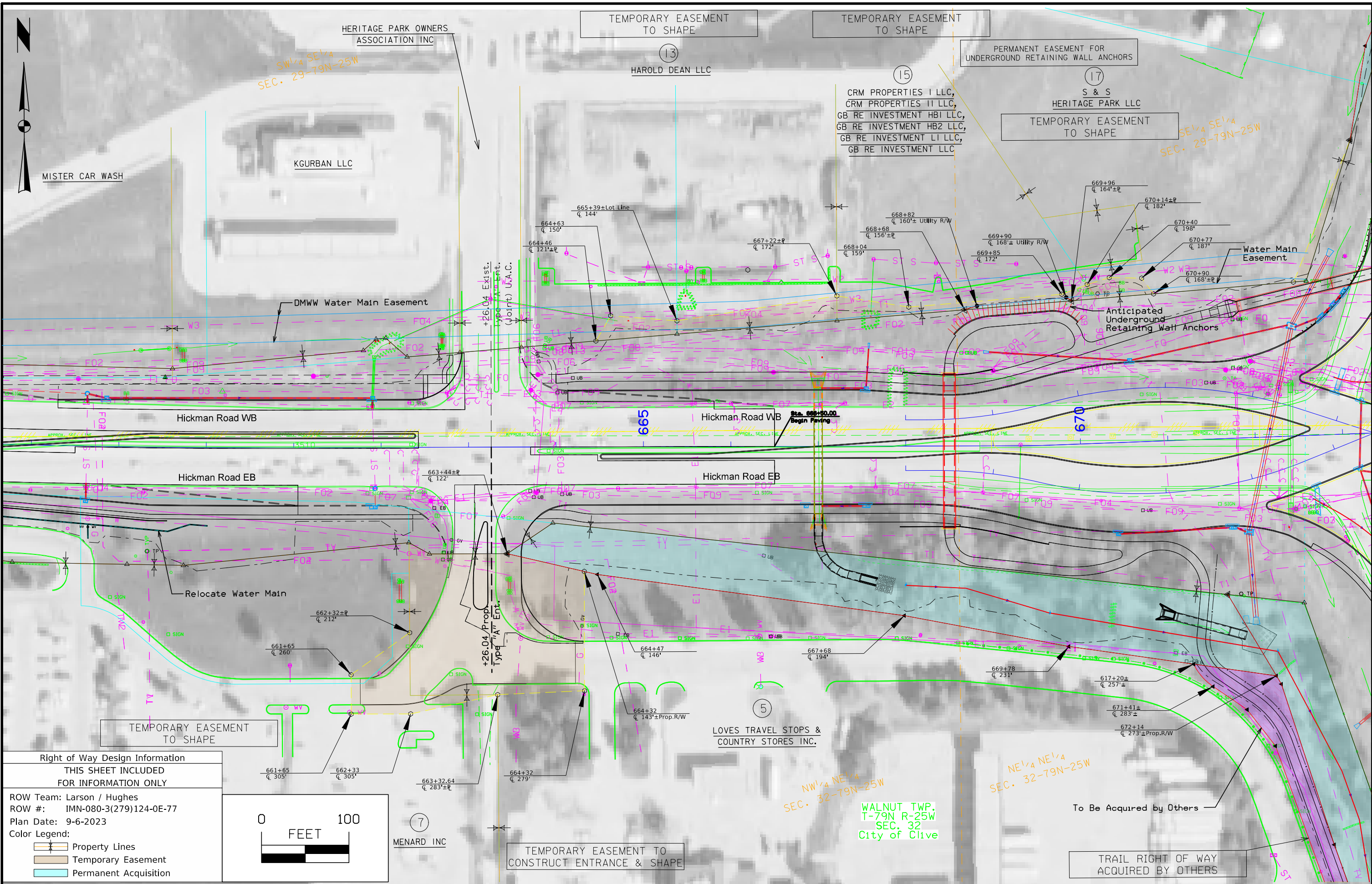


Point Name	Northing	Easting	Elevation	Feature Definition
CP1000	7502552.37	18483969.64	999.20	FENO-SET MONUMENT +/- 25' SOUTH OF DOUGLAS AVE, +/- 25' OFF RAMP.
CP1001	7497688.97	18486259.21	876.70	FENO-SET MONUMENT NORTH SIDE NW 11TH ST, 8' NORTH OF BACK OF CURB, 40' SW OF LIGHT POLE.
CP1002	7500968.72	18485289.65	935.99	FENO-SET MONUMENT EAST SIDE OF 11TH ST, +/- 7' EAST OF 1ST HYDRANT SOUTH OF JOHNSTON SUPPLY.
FEN01	7494509.38	18483375.02	915.02	FENO-FOUND MONUMENT WEST SIDE OF I-35 AT START OF UNIVERSITY OFF RAMP.
FEN02	7496684.19	18483459.91	895.21	FENO-FOUND MONUMENT WEST SIDE OF I-35 AND EAST OF SB ON RAMP OF HICKMAN ROAD.
G032	7491564.87	18483573.86	937.63	FENO-FOUND MONUMENT +/- 5' EAST OF EAST SHOULDER NB I-35, 500' SOUTH OF UNIVERSITY AVE.
BM55	7497393.85	18481482.57	929.83	URBANDALE BM55//FOUND BRASS PLUG IN CONCRETE/NORTH SIDE OF HICKMAN ROAD.

Element: Linear	PC(GeomBL5)	793.597 R1	7497050.192	18483082.232
	HPI()	1708.005 R1	7497057.497	18483996.611
	Tangential Direction:		N89.542°E		
	Tangential Length:		914.408		
Element: Circular	PC()	1708.005 R1	7497057.497	18483996.611
	HPI()	1732.873 R1	7497057.696	18484021.478
	CC()	7497082.497	18483996.411	
	PT()	1747.142 R1	7497082.563	18484021.411
	Radius:		25.000		
	Delta:		89.695°Left		
	Degree of Curvature (Arc):		229.183°		
	Length:		39.137		
	Tangent:		24.867		
	Chord:		35.261		
	Middle Ordinate:		7.275		
	External:		10.282		
	Tangent Direction:		N89.542°E		
	Radial Direction:		S0.458°E		
	Chord Direction:		N44.695°E		
	Radial Direction:		N89.847°E		
	Tangent Direction:		N0.153°W		
Element: Linear	PT(GeomBL7)	1747.142 R1	7497082.563	18484021.411
	PC()	1863.906 R1	7497199.327	18484021.100
	Tangential Direction:		N0.153°W		
	Tangential Length:		116.764		
Element: Circular	PC()	1863.906 R1	7497199.327	18484021.100
	HPI()	1878.966 R1	7497214.387	18484021.060
	CC()	7497199.367	18484036.100	
	PT()	1887.528 R1	7497214.367	18484036.119
	Radius:		15.000		
	Delta:		90.227°Right		
	Degree of Curvature (Arc):		21.972°		
	Length:		23.621		
	Tangent:		15.059		
	Chord:		21.255		
	Middle Ordinate:		4.414		
	External:		6.255		
	Tangent Direction:		N0.153°W		
	Radial Direction:		N89.847°E		
	Chord Direction:		N44.961°E		
	Radial Direction:		S0.074°W		
	Tangent Direction:		S89.926°E		
Element: Linear	PT(GeomBL9)	1887.528 R1	7497214.367	18484036.119
	END()	3700.001 R1	7497212.029	18485848.591
	Tangential Direction:		S89.926°E		
	Tangential Length:		1812.474		

* BENTLEY HORIZONTAL ALIGNMENT REVIEW
 * Alignment name: JUT
 * Alignment description:
 * Alignment style: Alignment\Geom_Baseline

Element	STATION	NORTHING	EASTING
Element: Linear	START(-100.000 R1	7497198.326
	HPI(31.267 R1	7497168.007
	Tangential Direction:	S76.646°E	
	Tangential Length:	131.267	
Element: Linear	HPI(31.267 R1	7497168.007
	HPI(208.663 R1	7497143.222
	Tangential Direction:	S81.969°E	
	Tangential Length:	177.396	
Element: Linear	HPI(208.663 R1	7497143.222
	HPI(385.595 R1	7497118.523
	Tangential Direction:	S81.976°E	
	Tangential Length:	176.931	
Element: Linear	HPI(385.595 R1	7497118.523
	HPI(577.043 R1	7497081.963
	Tangential Direction:	S78.991°E	
	Tangential Length:	191.448	
Element: Linear	HPI(577.043 R1	7497081.963
	HPI(685.320 R1	7497066.077
	Tangential Direction:	S81.564°E	
	Tangential Length:	108.277	
Element: Linear	HPI(685.320 R1	7497066.077
	HPI(793.597 R1	7497050.192
	Tangential Direction:	S81.564°E	
	Tangential Length:	108.277	



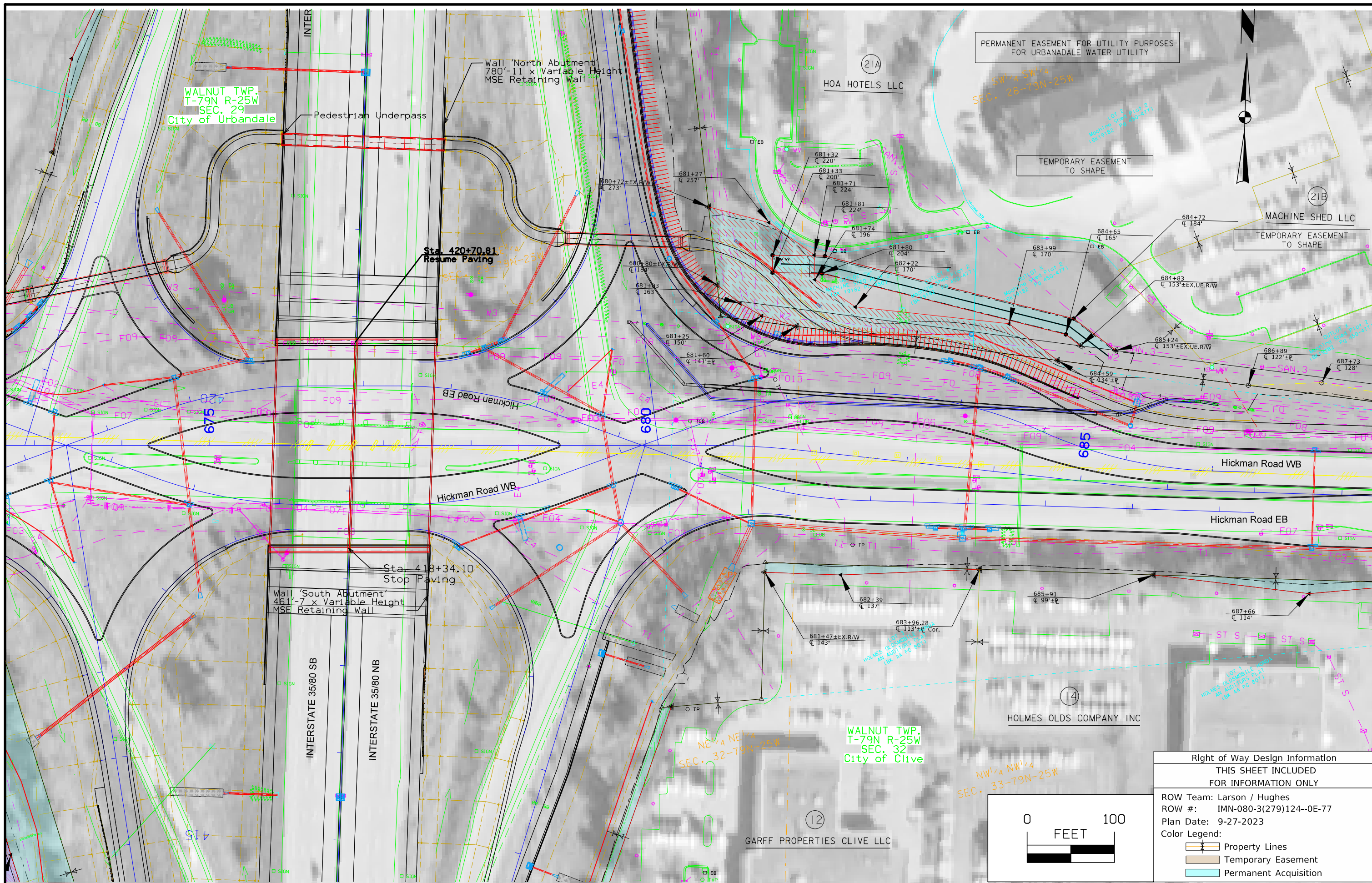
Right of Way Design Information
 THIS SHEET INCLUDED
 FOR INFORMATION ONLY

ROW Team: Larson / Hughes
 ROW #: IMN-080-3(279)124-0E-77
 Plan Date: 9-6-2023

Color Legend:

- Property Lines
- Temporary Easement
- Permanent Acquisition





PERMANENT EASEMENT FOR UTILITY PURPOSES
FOR URBANADALE WATER UTILITY

TEMPORARY EASEMENT
TO SHAPE

TEMPORARY EASEMENT
TO SHAPE

Wall 'South Abutment'
461'-7" x Variable Height
MSE Retaining Wall

Wall 'North Abutment'
780'-11" x Variable Height
MSE Retaining Wall

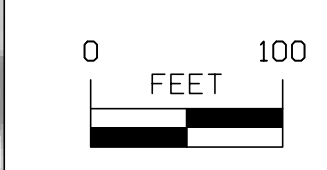
WALNUT TWP.
T-79N R-25W
SEC. 29
City of Urbandale

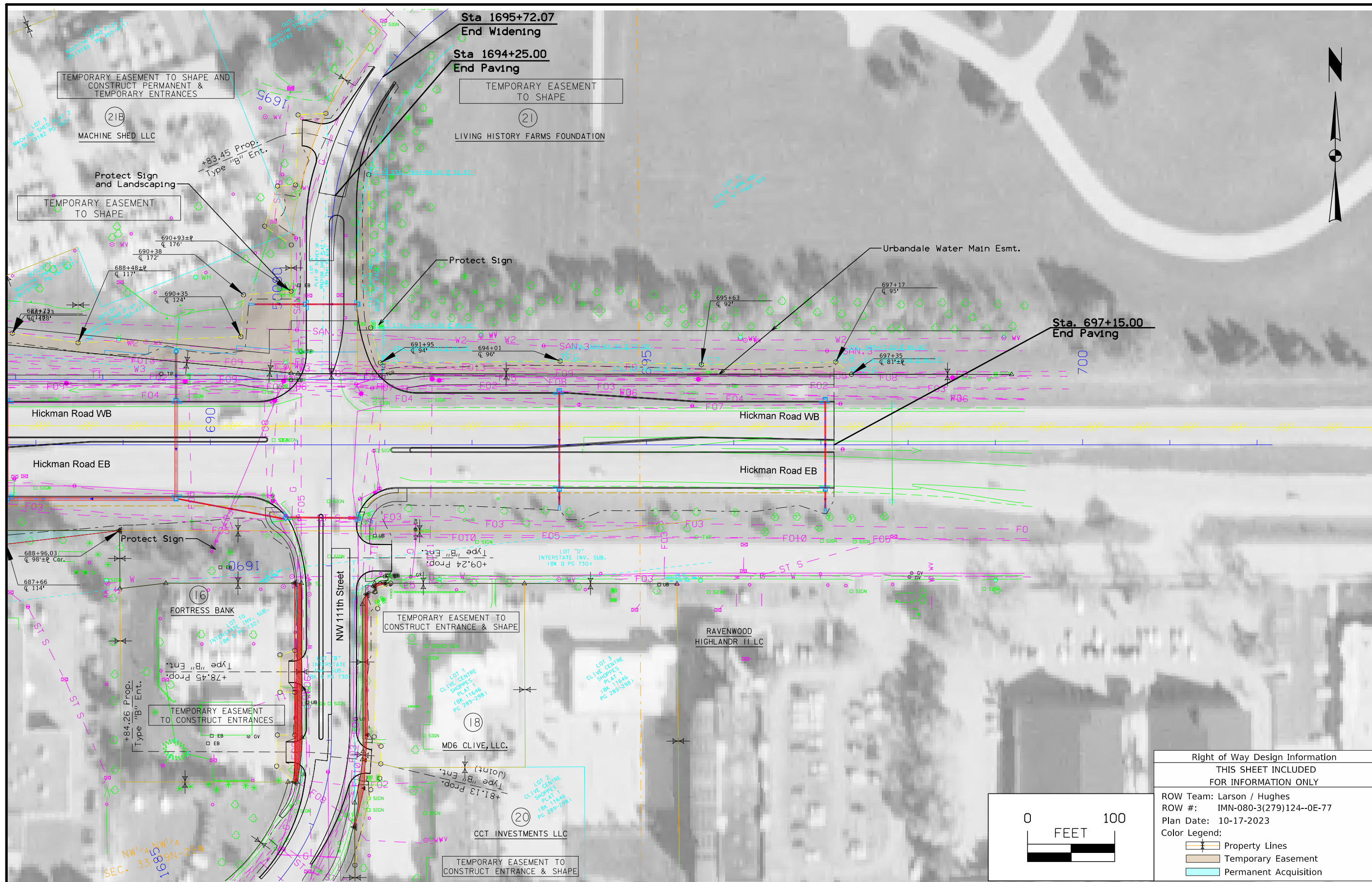
WALNUT TWP.
T-79N R-25W
SEC. 32
City of Clive

Right of Way Design Information
THIS SHEET INCLUDED
FOR INFORMATION ONLY

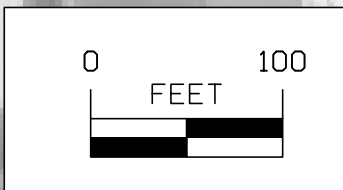
ROW Team: Larson / Hughes
ROW #: IMN-080-3(279)124--0E-77
Plan Date: 9-27-2023

Color Legend:
 Property Lines
 Temporary Easement
 Permanent Acquisition





Right of Way Design Information	
THIS SHEET INCLUDED FOR INFORMATION ONLY	
ROW Team:	Larson / Hughes
ROW #:	IMN-080-3(279)124--0E-77
Plan Date:	10-17-2023
Color Legend:	
	Property Lines
	Temporary Easement
	Permanent Acquisition



108-23A
08-01-08

TRAFFIC CONTROL PLAN

In order to minimize disruption to traffic, comply with the following restrictions.

Traffic U.S. Highway 6 (Hickman Road), Interchange Ramps, NW 111th Street, and the Loves/Menards entrance shall be maintained at all times.

Shoulder and/or lane closures per Standard Road Plans TC-402 and TC-418 may be used for material deliveries, subject to the restrictions shown in tabulation 108-23B.

108-26A
08-01-08

STAGING NOTES

U.S. Highway 6 (Hickman Road) is a high volume roadway. Therefore, it is advisable to adopt a construction sequence that directs activities in an orderly manner and minimizes disruption to traffic as much as practical.

It is recognized that as the various activities related to construction progress, certain situations may arise which will preclude adhering to the original construction sequence or which, in the opinion of the Contractor, should result in more efficient staging operations. Should the Contractor desire to deviate from the original plan, submit a written alternative plan to the Resident Construction Engineer for approval.

Stage 1 - Multi-Duct Joint Utility Trench Installation

- Contact MidAmerican Energy to coordinate work.
- Perform clearing and grubbing operations.
- Install conduits under the interstate from station 8+00 to 16+90.
- As approved by the Engineer, utilize spoil material from the bore as embankment-in-place at hand hole bank number 2.
- Install all trenched conduits.
- Install hand holes and sweeps.

Stage 2 - Clive/ICN System Relocation and Reconnection

- Contact City of Clive and ICN staff to coordinate work.
- Install fiber optic cable within completed joint utility trench.
- Install conduits and cable necessary to connect to existing system.
- Perform splicing and connections to existing system.

111-01
04-17-12

COORDINATED OPERATIONS

Other work in progress during the same period of time will include the construction of the projects listed. Coordinate operations with those of other contractors working within the same area.

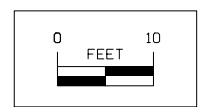
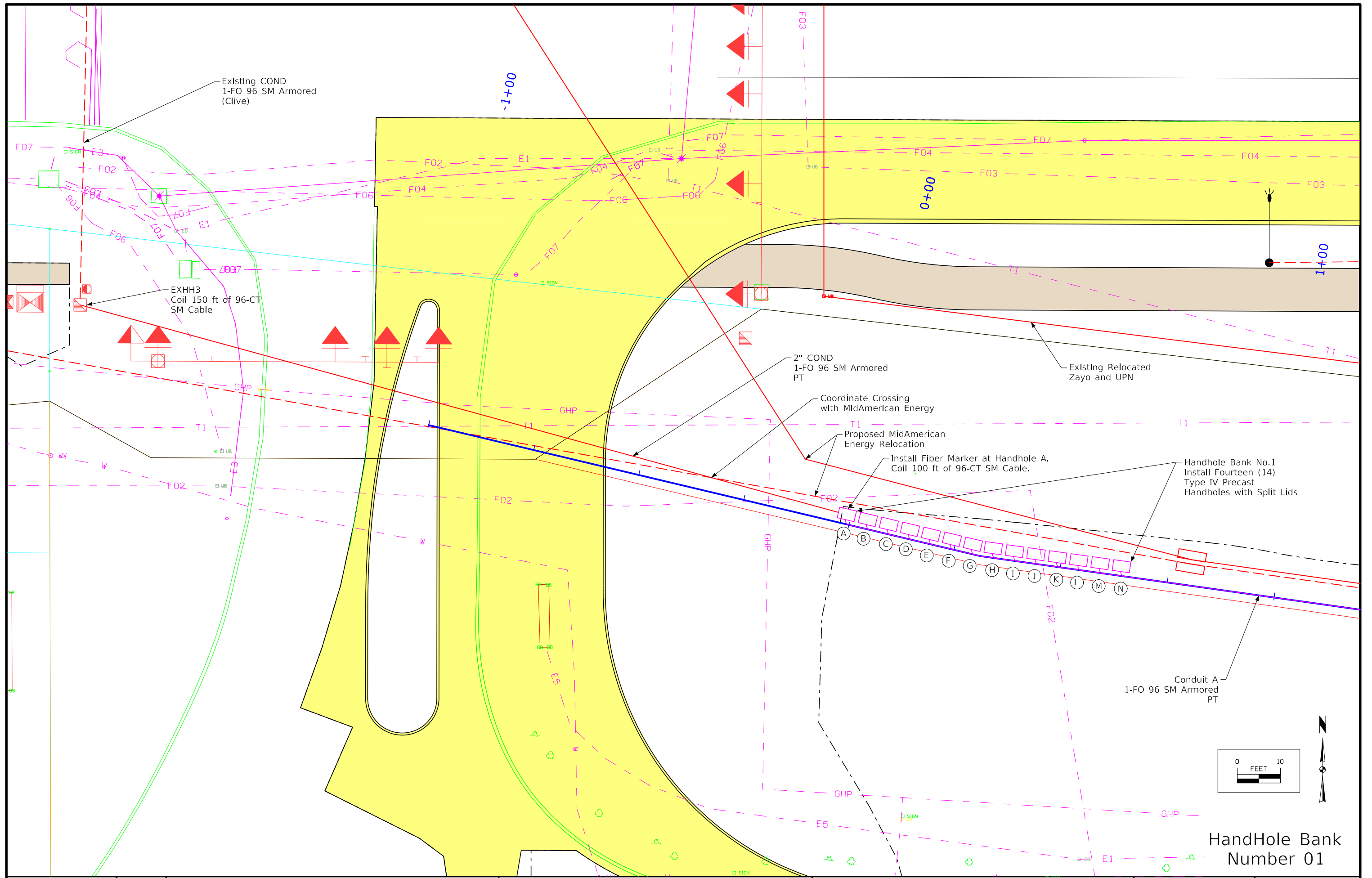
Project	Type of Work
MidAm Electric Relocation	Electric Utility Relocation

108-23B
10-17-17

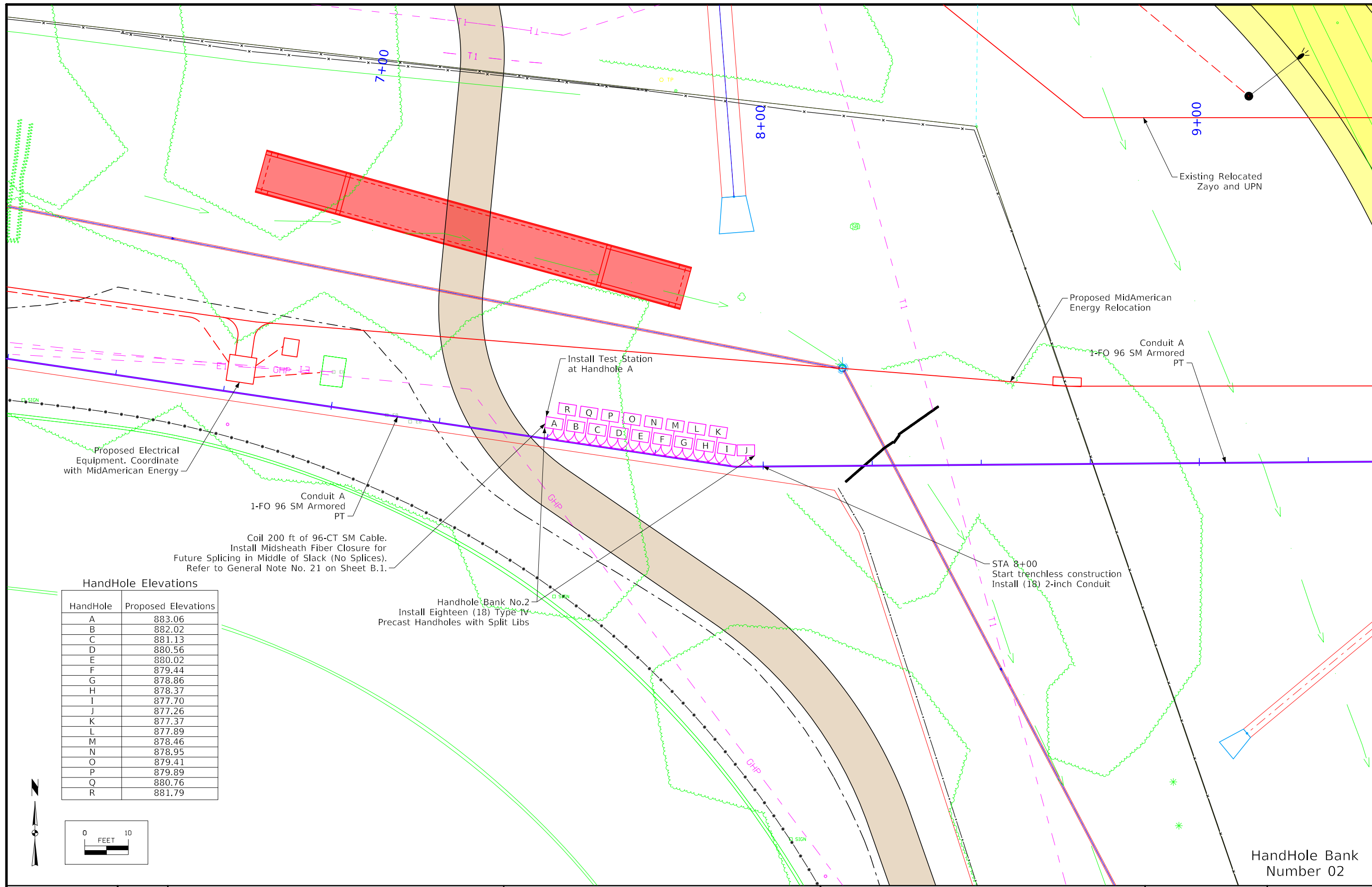
TRAFFIC CONTROL CLOSURE TABLE(S)

* This is to only be used in conjunction with Tabulation 108-23A
Shaded area indicates times that lane closures are not allowed

	AM											Noon		PM																																											
	12:00	12:30	1:00	1:30	2:00	2:30	3:00	3:30	4:00	4:30	5:00	5:30	6:00	6:30	7:00	7:30	8:00	8:30	9:00	9:30	10:00	10:30	11:00	11:30	12:00	12:30	1:00	1:30	2:00	2:30	3:00	3:30	4:00	4:30	5:00	5:30	6:00	6:30	7:00	7:30	8:00	8:30	9:00	9:30	10:00	10:30	11:00	11:30									
SUN																																																									
MON																																																									
TUE																																																									
WED																																																									
THU																																																									
FRI																																																									
SAT																																																									



HandHole Bank
Number 01



HandHole Elevations

HandHole	Proposed Elevations
A	883.06
B	882.02
C	881.13
D	880.56
E	880.02
F	879.44
G	878.86
H	878.37
I	877.70
J	877.26
K	877.37
L	877.89
M	878.46
N	878.95
O	879.41
P	879.89
Q	880.76
R	881.79

Coil 200 ft of 96-CT SM Cable.
Install Midsheath Fiber Closure for
Future Splicing in Middle of Slack (No Splices).
Refer to General Note No. 21 on Sheet B.1.

Handhole Bank No.2
Install Eighteen (18) Type IV
Precast Handholes with Split Libs

Install Test Station
at Handhole A

STA 8+00
Start trenchless construction
Install (18) 2-inch Conduit

Proposed MidAmerican
Energy Relocation

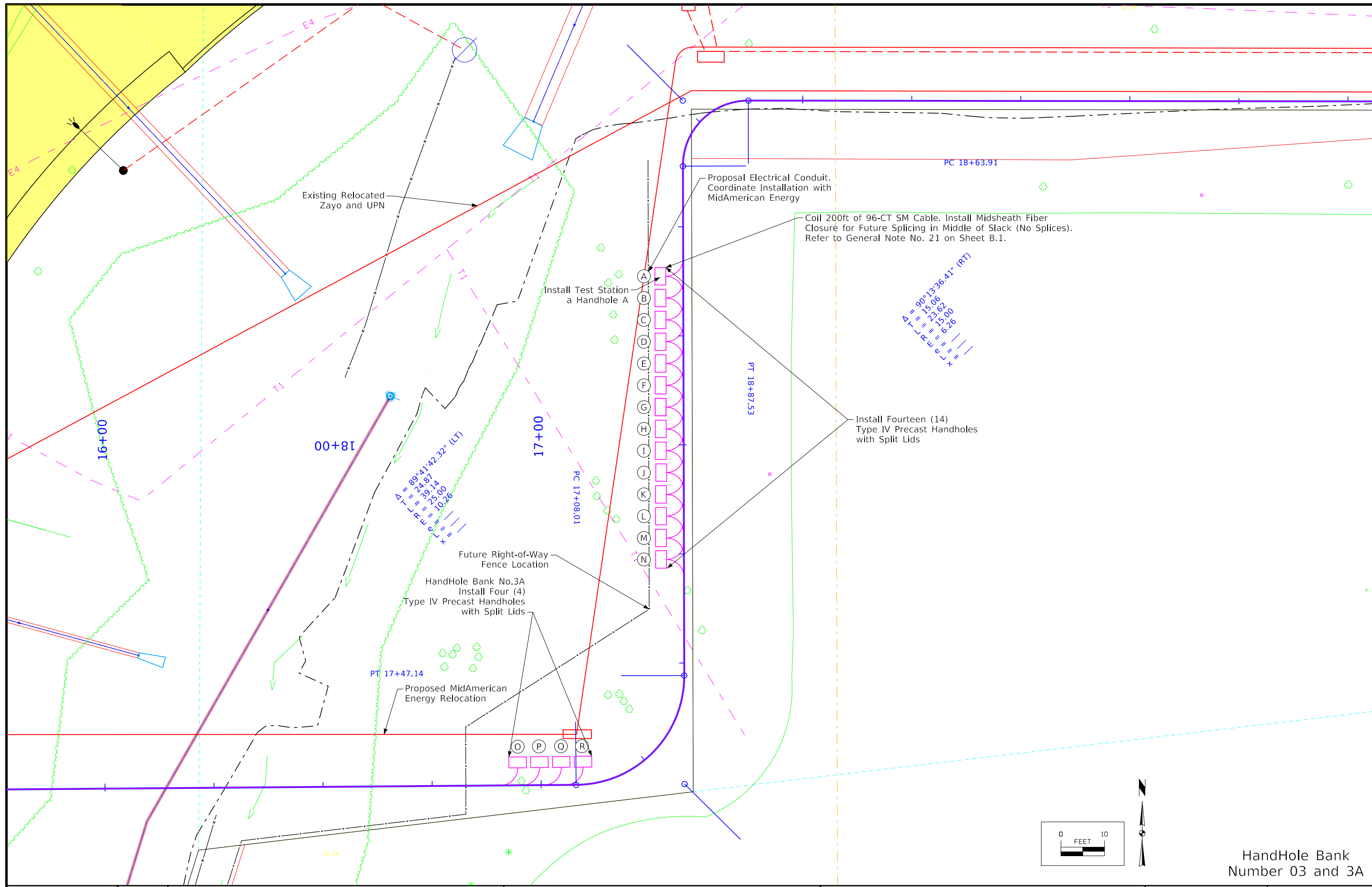
Conduit A
1-FO 96 SM Armored
PT

Existing Relocated
Zayo and UPN

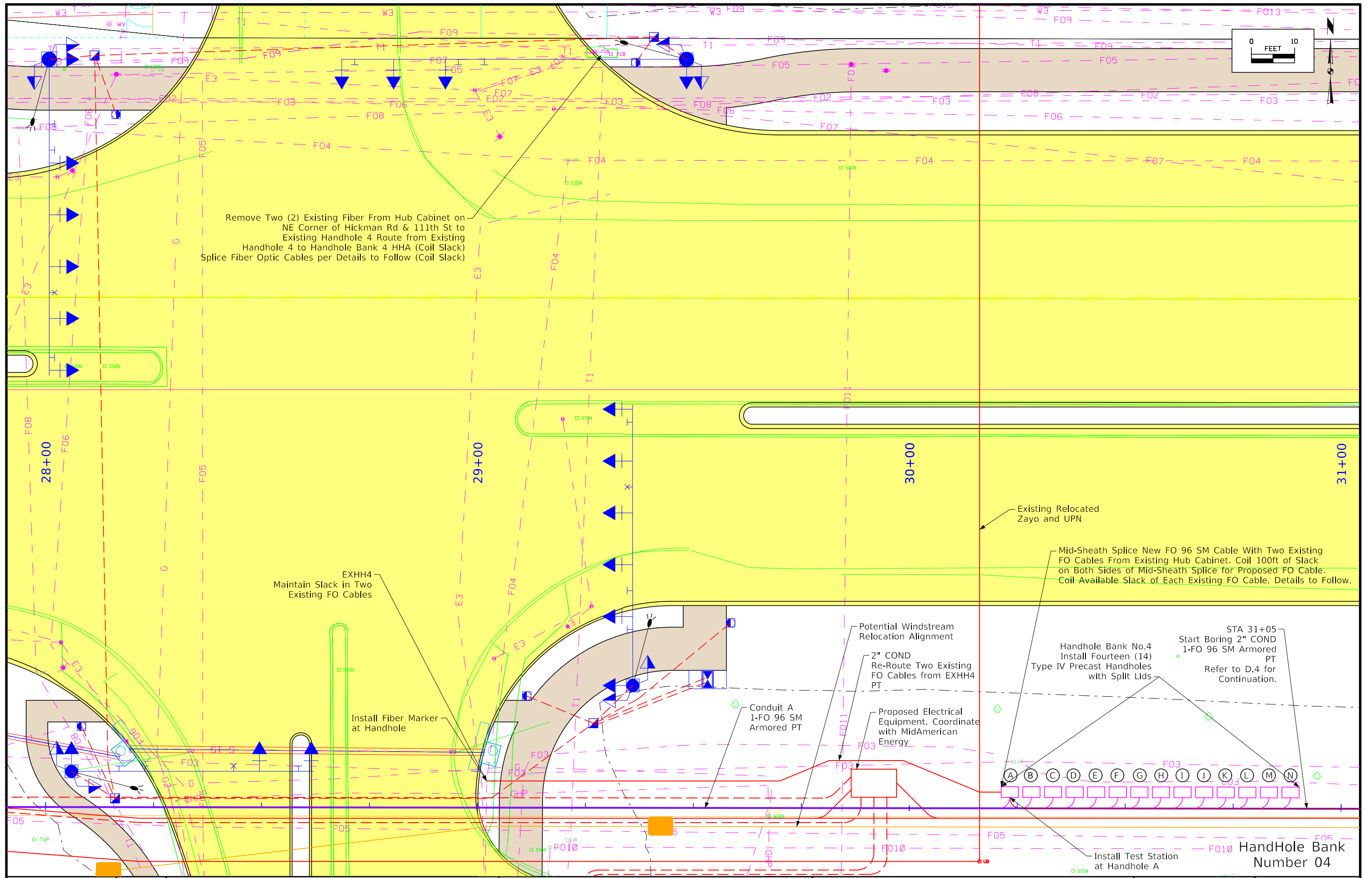
Proposed Electrical
Equipment. Coordinate
with MidAmerican Energy

Conduit A
1-FO 96 SM Armored
PT

HandHole Bank
Number 02



HandHole Bank
Number 03 and 3A



Remove Two (2) Existing Fiber From Hub Cabinet on NE Corner of Hickman Rd & 111th St to Existing Handhole 4 Route from Existing Handhole 4 to Handhole Bank 4 HHA (Coil Slack) Splice Fiber Optic Cables per Details to Follow (Coil Slack)

EXHH4
Maintain Slack in Two Existing FO Cables

Install Fiber Marker at Handhole

Potential Windstream Relocation Alignment

2" COND Re-Route Two Existing FO Cables from EXHH4 PT

Proposed Electrical Equipment. Coordinate with MidAmerican Energy

Conduit A 1-FO 96 SM Armored PT

Handhole Bank No.4 Install Fourteen (14) Type IV Precast Handholes with Split Lids

STA 31+05 Start Boring 2" COND 1-FO 96 SM Armored PT Refer to D.4 for Continuation.

Install Test Station at Handhole A

HandHole Bank Number 04

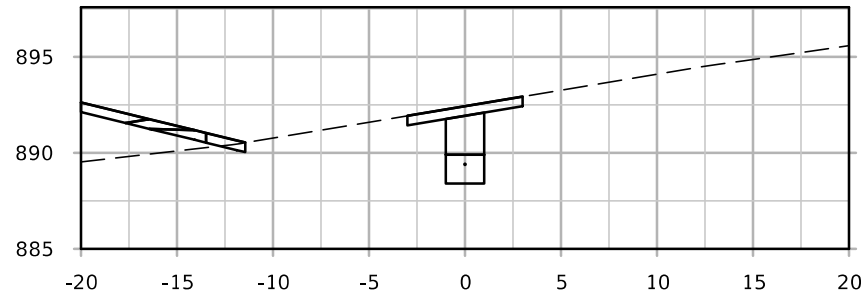
Existing Relocated Zayo and UPN

Mid-Sheath Splice New FO 96 SM Cable With Two Existing FO Cables From Existing Hub Cabinet. Coil 100ft of Slack on Both Sides of Mid-Sheath Splice for Proposed FO Cable. Coil Available Slack of Each Existing FO Cable. Details to Follow.

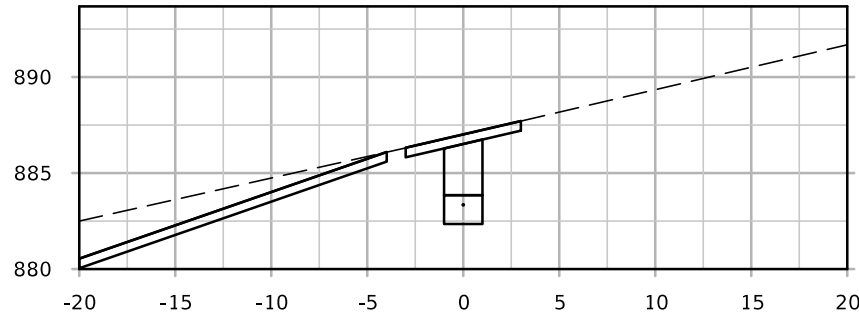
CROSS SECTION VIEW COLOR LEGEND

Design Color No.	Feature	Design Color No.	Feature
------------------	---------	------------------	---------

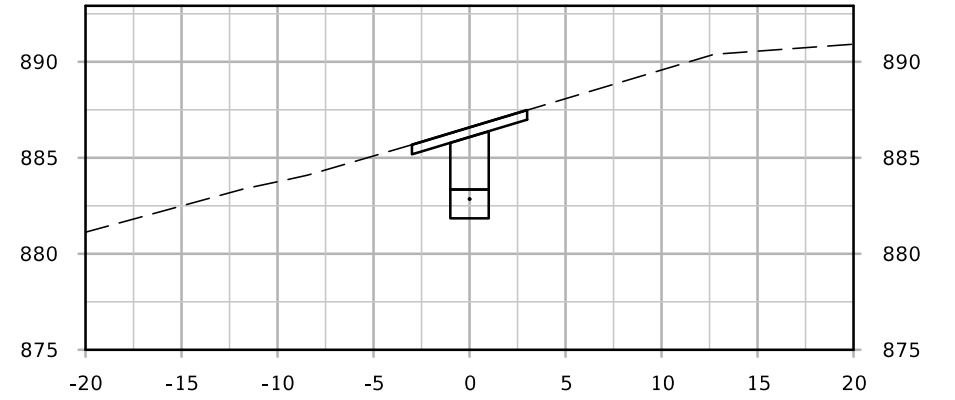
Design Color No.	Feature	Design Color No.	Feature
Aggregate			
(64)	Choke Stone	(112)	Noise Wall
(42)	Engineering Fabric	(112)	Noise Wall Footing
(8)	Flooded Backfill	(112)	Retaining Wall Back
(92)	Macadam Stone	(112)	Retaining Wall Back Excavate
(20)	Modified	(112)	Retaining Wall Face
(12)	Plowing Shaping	(112)	Retaining Wall Front Excavate
(14)	Porous Backfill	(112)	Retaining Wall Front Footing
(8)	Revetment Class A	(112)	Retaining Wall MSE Gutter
(6)	Revetment Class B	(112)	Retaining Wall Reinforced Earth
(62)	Revetment Class C		
(188)	Revetment Class D	Grading	
(28)	Revetment Class E	(8)	Behind Curb Cut
(12)	Shoulder Special Backfill	(6)	Granular
(12)	Special Backfill	(13)	Granular Back Fill
(20)	Subbase	(48)	Rock Undercut
(20)	Subbase Lower	(8)	Shoulder Earth Fill
(20)	Subbase Upper	(2)	Side Slopes
(118)	Subgrade Treatment	(226)	Side Slopes Dressing
Asphalt			
(207)	HMA Base Course	Substrata	
(207)	HMA Interim Course	(128)	Boulder Substrata
(207)	HMA Surface Course	(48)	Broken Weathered Substrata
Concrete			
(0)	Barrier Concrete	(3)	Core Out Substrata
(0)	Barrier Concrete Footing	(203)	Existing Pavement Substrata
(0)	Curb Gutter	(6)	Loam Substrata
(48)	Flowable Mortar	(80)	Rock Substrata
(0)	Median Concrete	(4)	Select Sand Substrata
(0)	PCC Pavement	(3)	Shale Substrata
(0)	Sidewalk	(10)	Topsoil Substrata
Shoulder			
(209)	Shoulder HMA	Unsuitable / Waste	
(0)	Shoulder PCC	(3)	Unsuitable Type A
(6)	Shoulder Granular	(13)	Unsuitable Type B
Existing			
(0)	Existing Pavement	(11)	Unsuitable Type C
		(3)	Waste



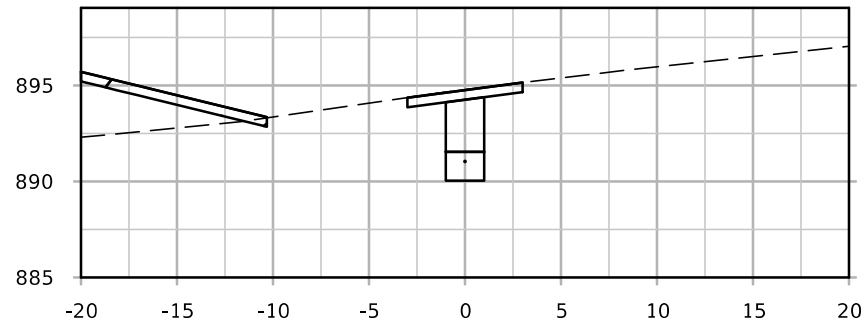
STA. 1+50.00



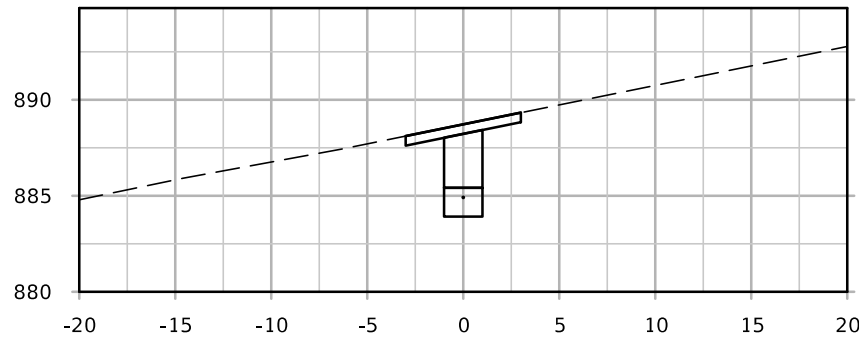
STA. 3+50.00



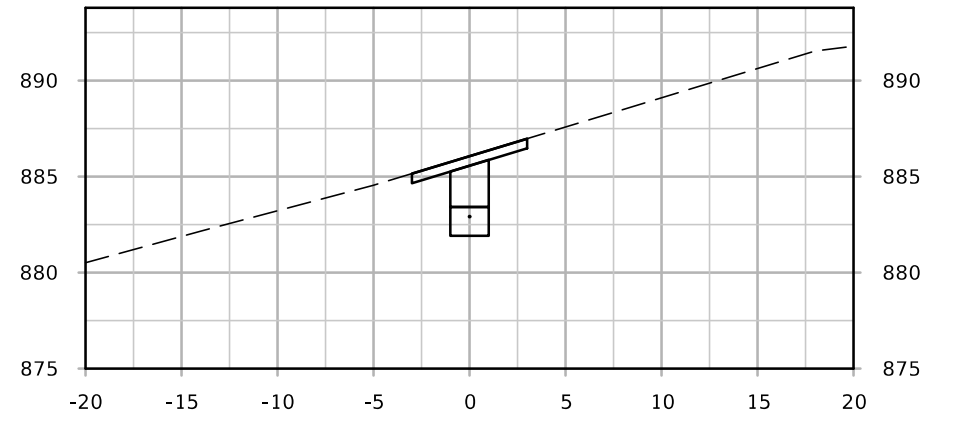
STA. 5+00.00



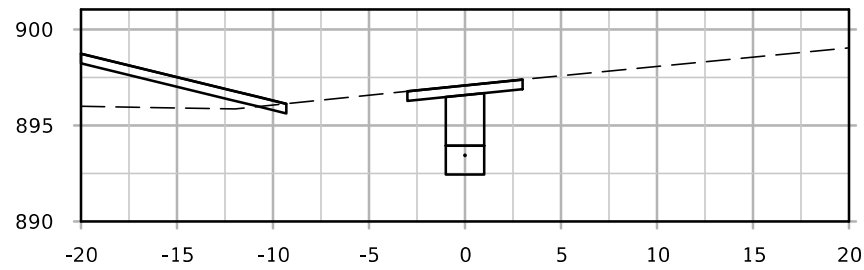
STA. 1+00.00



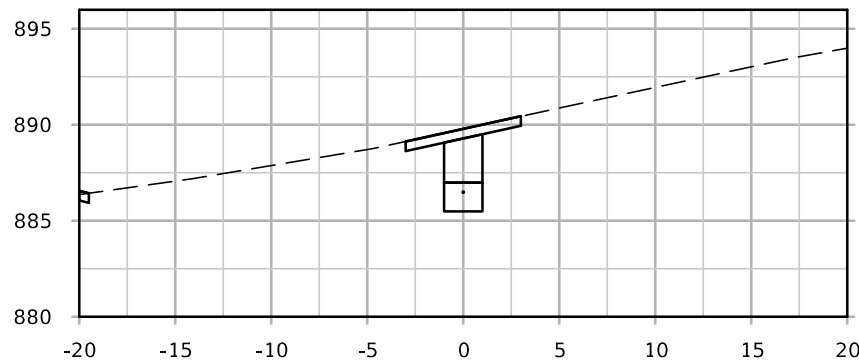
STA. 3+00.00



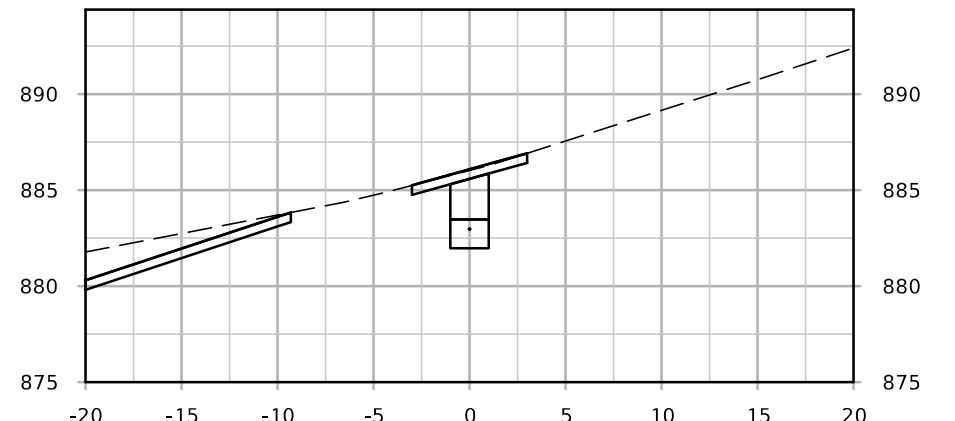
STA. 4+50.00



STA. 0+50.00



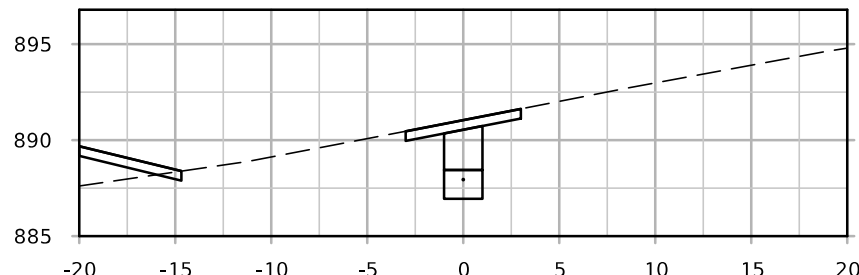
STA. 2+50.00



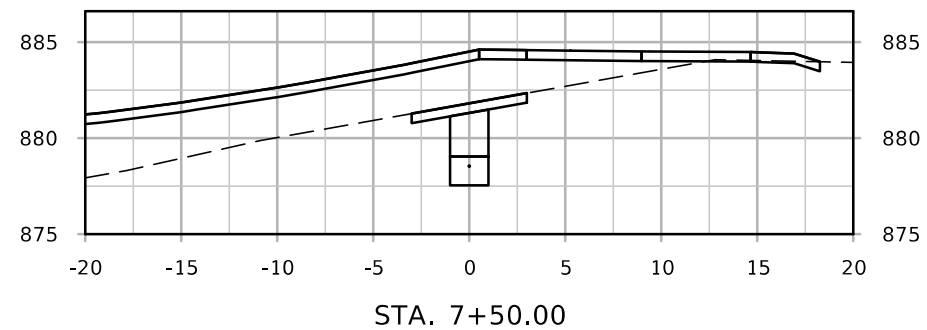
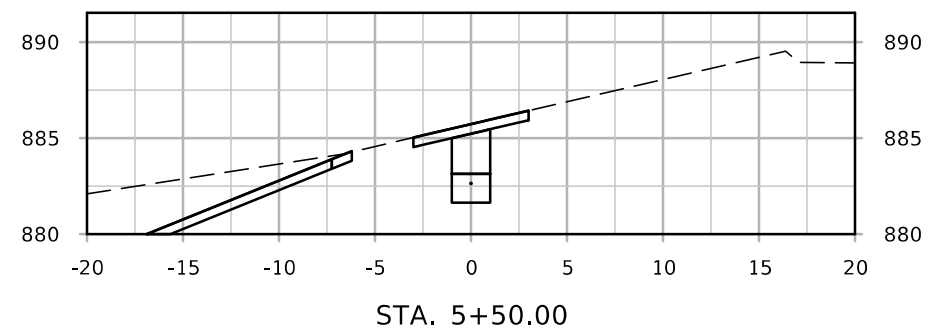
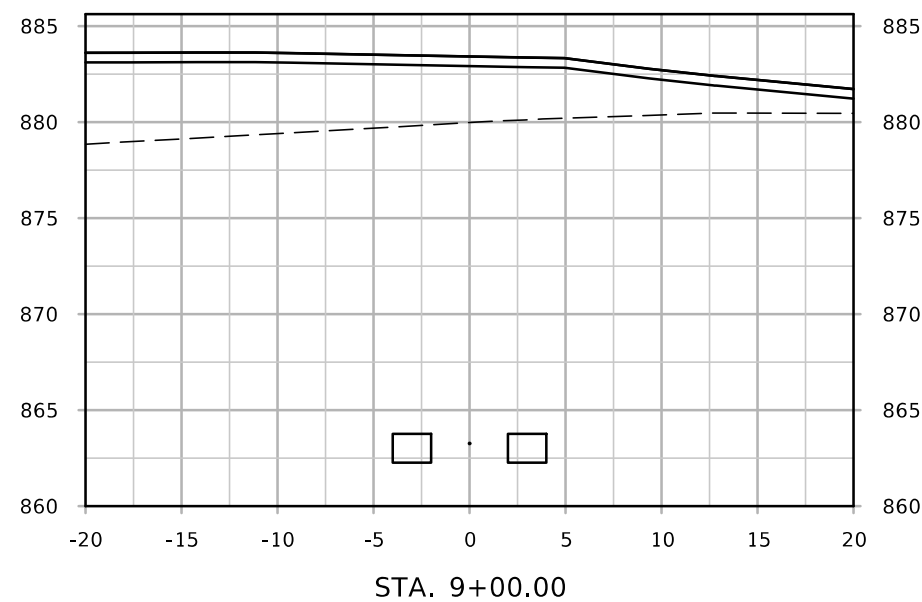
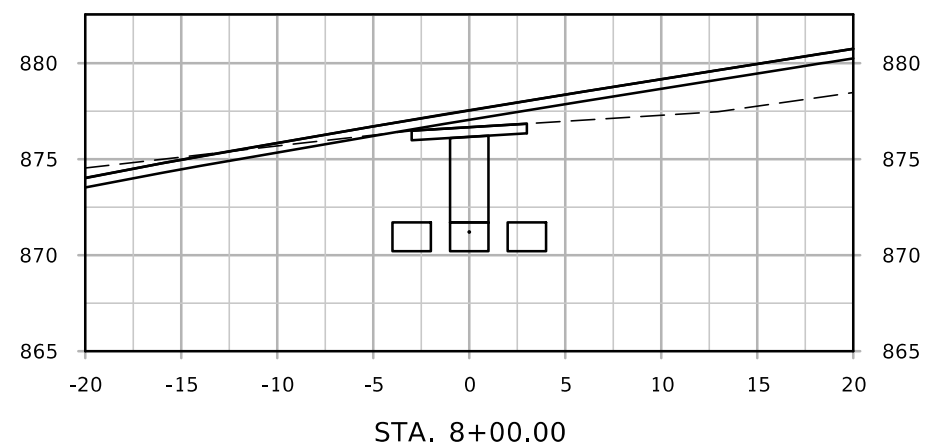
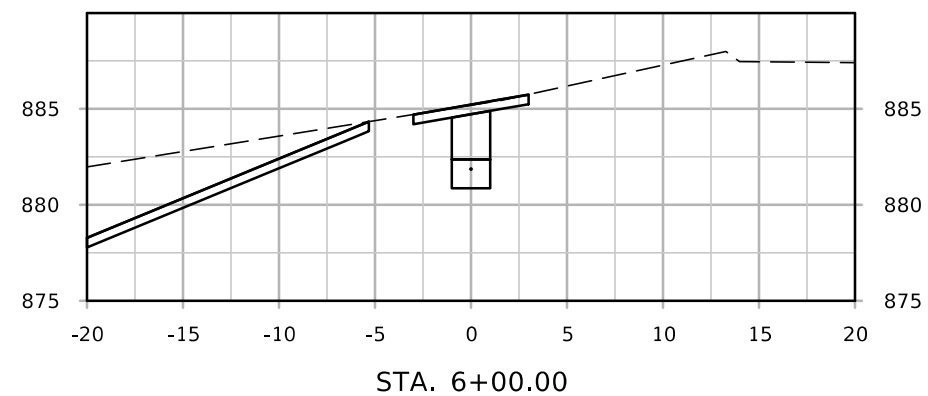
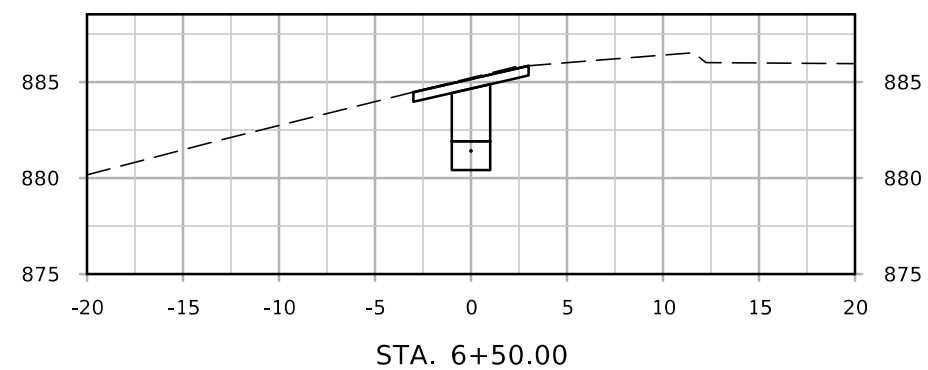
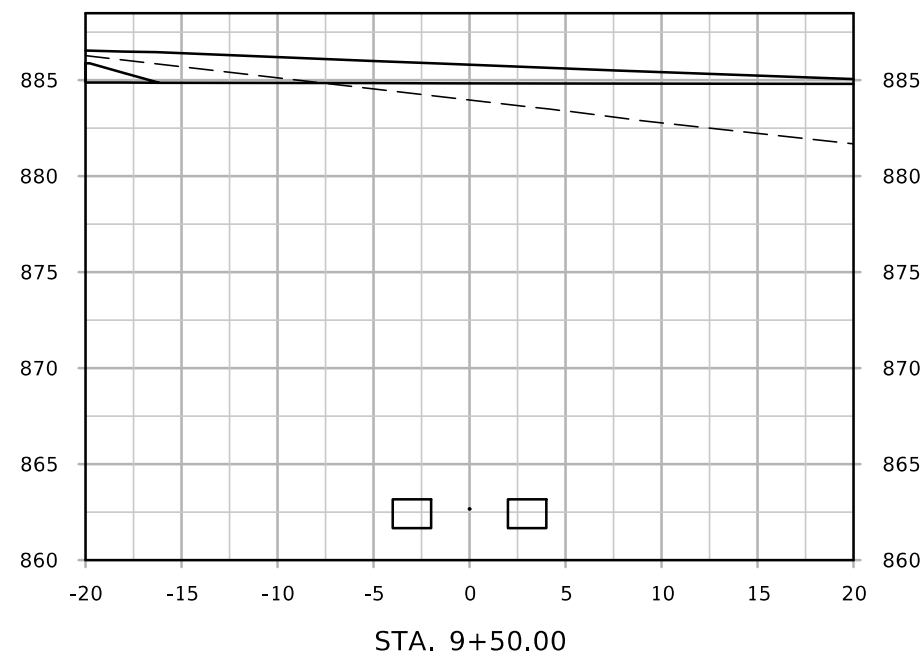
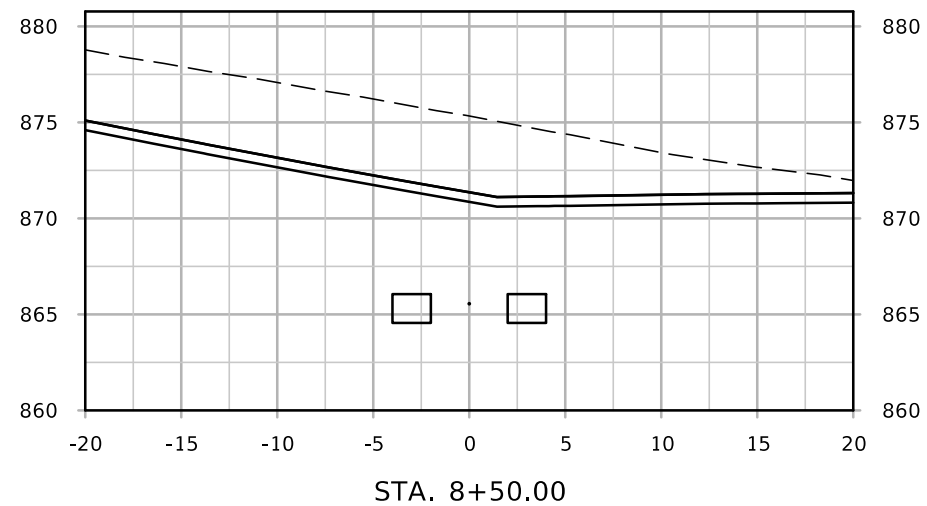
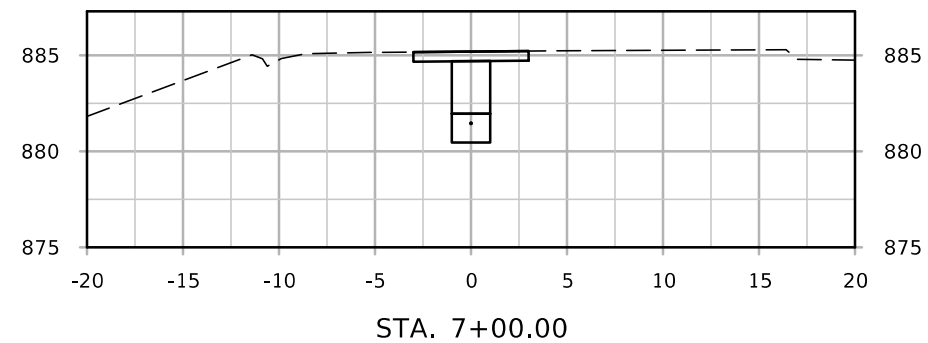
STA. 4+00.00

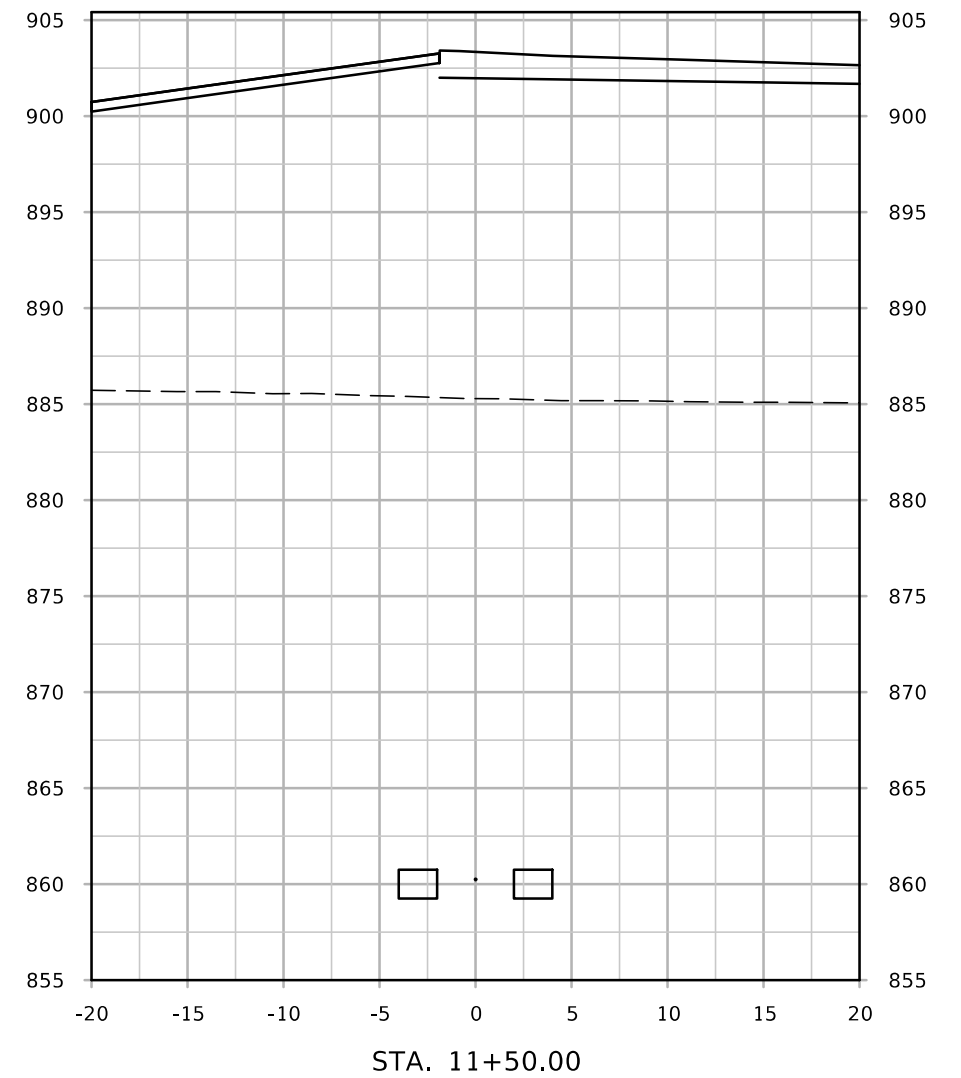
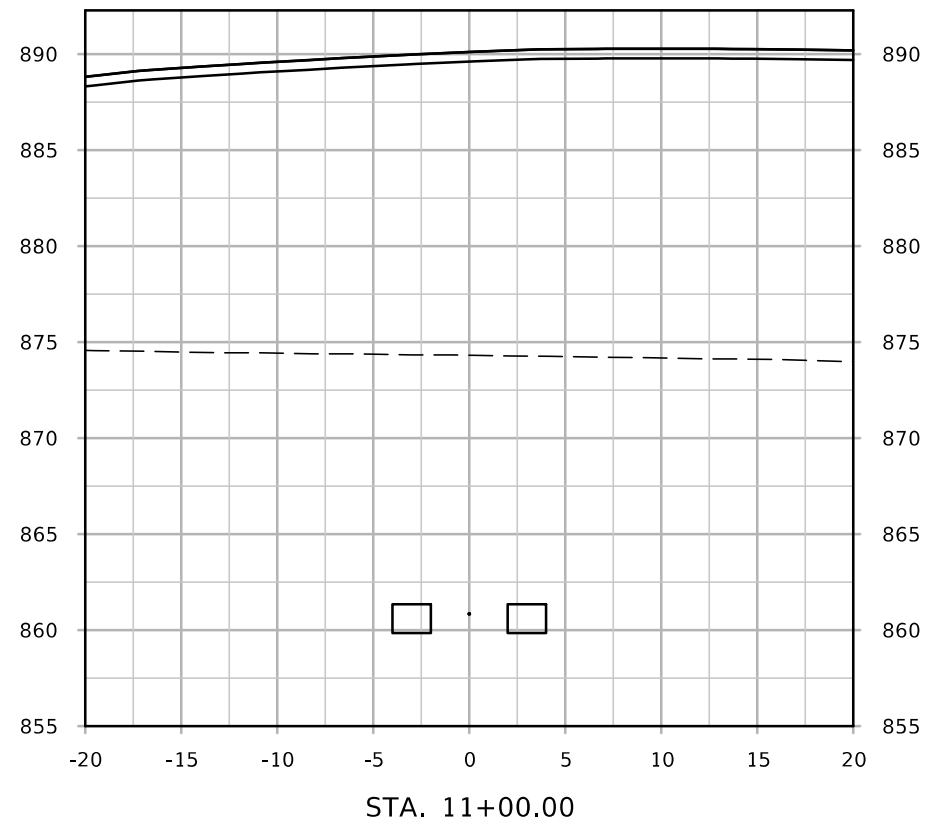
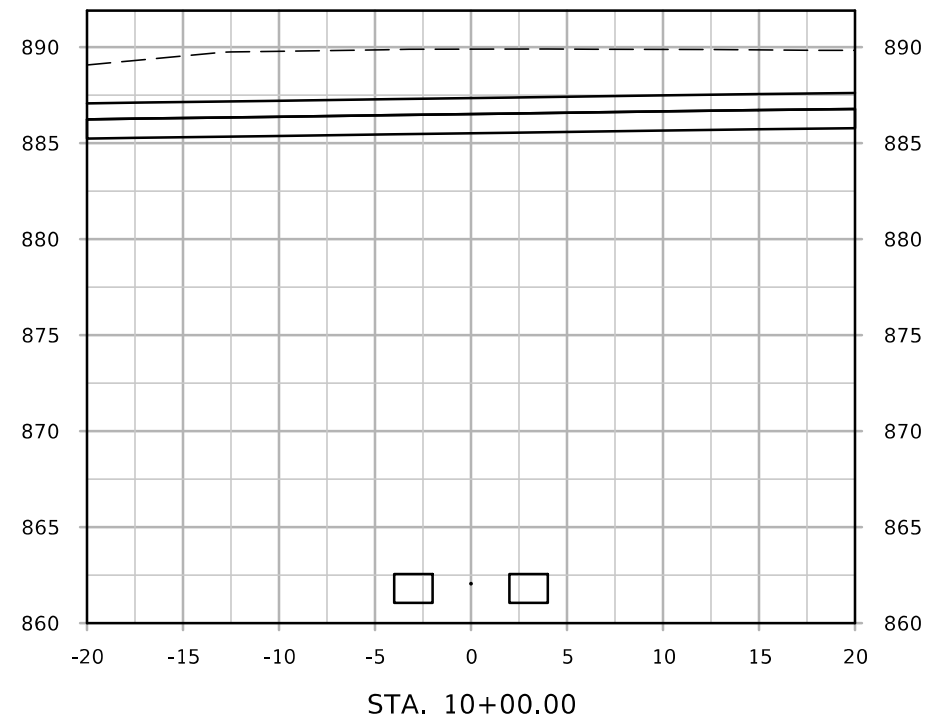
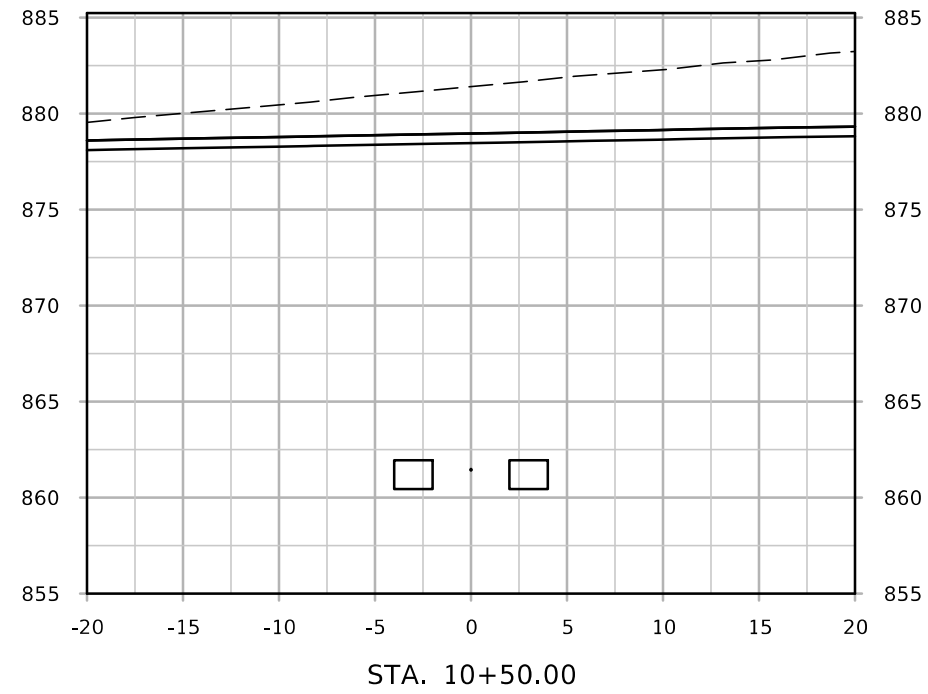


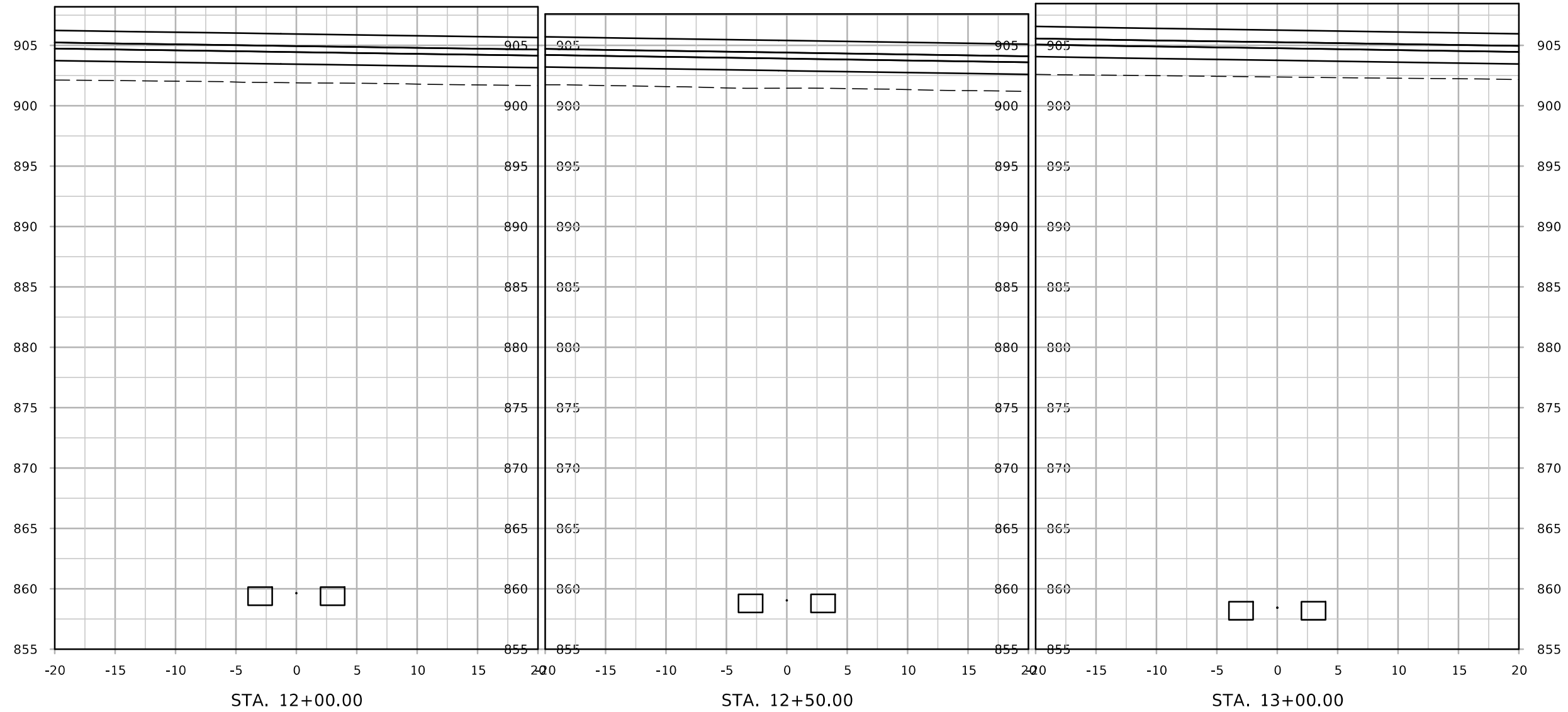
STA. 0+00.00



STA. 2+00.00







JUT

