

1280

F0

Existing I-380

Existing I-380

Future Median Work

PT Sta 1274+95.49

FO

FO

FO

FO

FO

FO

FO

FO

FO

FO

FO

FO

FO

FO

FO

FO

FO

FO

PC Sta 1267+32.71

SIGN

SIGN

SIGN

Curve Data
1° 16' 16.63" (LT)
Δ = 381.40
T = 762.77
L = 34377.47
E = 2.12

4575

275

35

RUTH E. RARICK TRUST

EXISTING 15' EASEMENT

3

BOWMAN PROPERTY, L.L.C.

71290

71288+60

⊘50'

71287+90

⊘50'

284+45±R

⊘190'

280+00

⊘140'

280

284

⊘21'

28

⊘9'

285

71285

FOI Sta 7126+65.10

F03

F03

F03

F03

F03

F03

F03

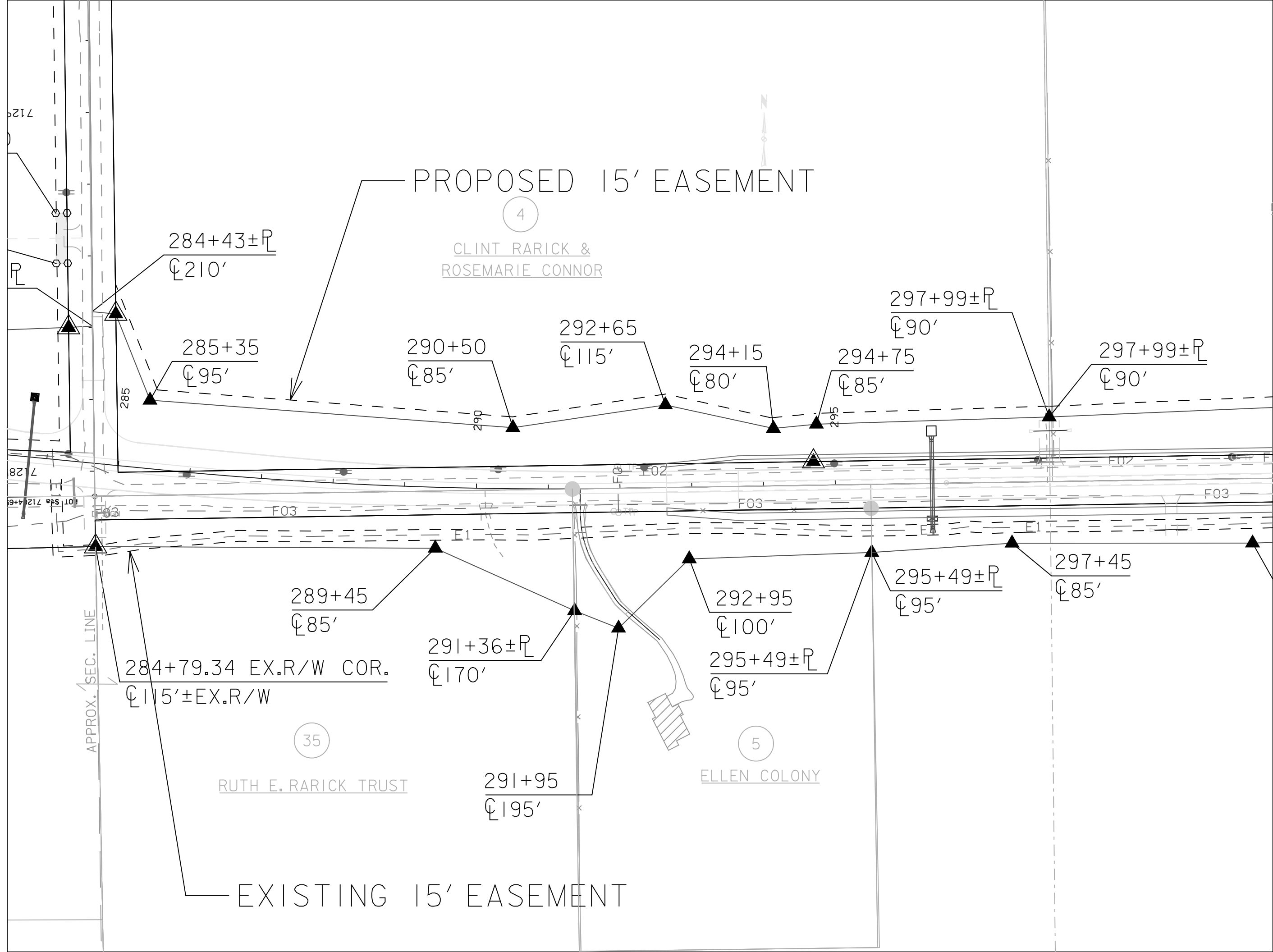
JOHNSON COUNTY TWP.
CLEAR CREEK T-7M
CL 1-80N Sec. 22

APPROX. SEC. LINE

APPROX. SEC. LINE

284+79

⊘115'±E



PROPOSED 15' EASEMENT

4

CLINT RARICK &
ROSEMARIE CONNOR

284+43±RL
C 210'

285+35
C 95'

290+50
C 85'

292+65
C 115'

294+15
C 80'

294+75
C 85'

297+99±RL
C 90'

297+99±RL
C 90'

289+45
C 85'

284+79.34 EX.R/W COR.
C 115'±EX.R/W

291+36±RL
C 170'

292+95
C 100'

295+49±RL
C 95'

295+49±RL
C 95'

297+45
C 85'

291+95
C 195'

5
ELLEN COLONY

35
RUTH E. RARICK TRUST

EXISTING 15' EASEMENT

APPROX. SEC. LINE



10

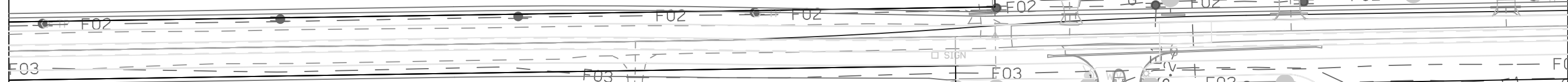
COLONY INC

PROPOSED 15' EASEMENT

306+75
℄115'

309+45
℄100'

311+31±R
℄70'



300+80
℄90'

306+95
℄80'

307+50
℄60'

309+00
℄60'

310+85±R
℄60'

EXISTING 15' EASEMENT

10

COLONY INC