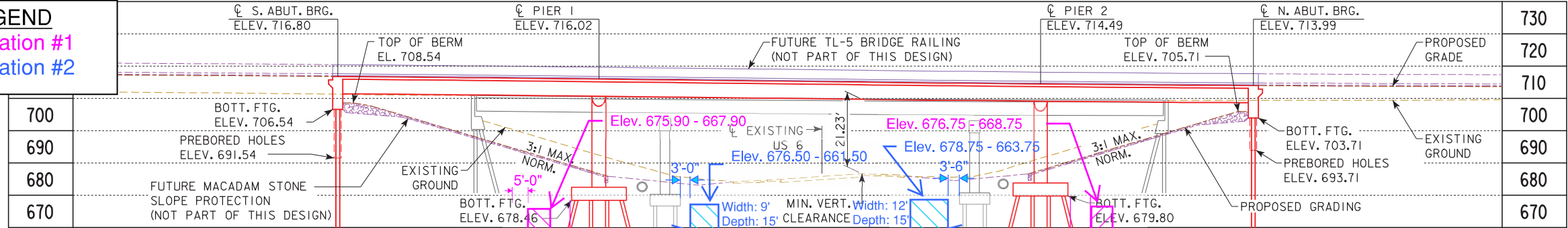
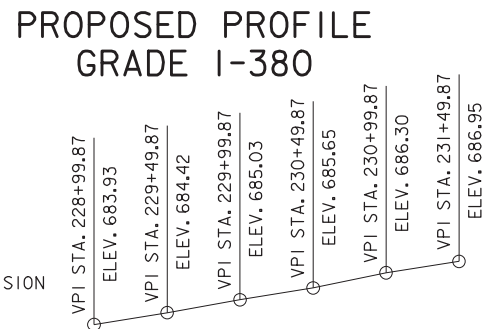
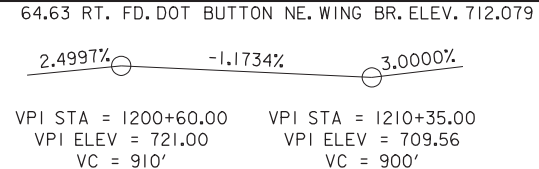


LEGEND
 Location #1
 Location #2



NOTE: TOP OF BRIDGE DECK AT CENTERLINE N.B. ROADWAY IS +0.24' ABOVE THE PROFILE GRADE TO ACCOUNT FOR CROSS SLOPE.



NOTES:
 TL-5 MEDIAN BRIDGE RAIL TO BE CONSTRUCTED WITH A FUTURE DESIGN.
 PIERS EXEMPT FROM VEHICULAR COLLISION FORCE.
 MACADAM STONE SLOPE PROTECTION FOR BOTH BRIDGES TO BE INSTALLED WITH THE S.B. BRIDGE STAGE II CONSTRUCTION.
 BULB TEE D BEAMS AND WALL PIERS.
 BRIDGE AESTHETICS TO BE INCORPORATED DURING FINAL DESIGN.

CURVE DATA

I-380
 PI STA. 1191+13.06
 $\Delta = 22^\circ 38' 40.61''$ (RT)
 T = 655.54'
 L = 1293.98'
 E = 64.98'
 R = 3274.04'
 e = 5.2%
 I = 312'
 x = 150'
 PC STA. 1184+57.52
 PT STA. 1197+51.50

CURVE DATA

US 6
 PI STA. 230+11.99
 $\Delta = 13^\circ 28' 23.85''$ (RT)
 T = 153.03'
 L = 304.65'
 E = 9.01'
 R = 1295.55
 PC STA. 228+58.96
 PT STA. 231+63.62

LOCATION

N.B. I-380 OVER US 6
 T-80N R-7W
 SECTION 27
 CLEAR CREEK TOWNSHIP
 JOHNSON COUNTY
 FHWA NO. 600411
 BRIDGE MAINT. NO. 5200.8R380
 LATITUDE 41.705367°
 LONGITUDE -91.642002°

UTILITIES LEGEND:

- E1 - POWER-LINN CO. REC
- F0 - FIBER OPTIC-STATE OF IOWA (ICN)
- F02 - FIBER OPTIC-SOUTH SLOPE COOP. TEL. CO.
- F04 - FIBER OPTIC-MCLEOD
- F05 - FIBER OPTIC-IOWA TELCOM
- G-HP - HIGH PRESSURE GAS-MIDAMERICAN ENERGY
- T1 - TELEPHONE-IOWA TELCOM

TRAFFIC ESTIMATE

I-380 (NORTHBOUND)

2015 AADT	25,650	V.P.D.
2040 AADT	37,270	V.P.D.
202. DHV	-	V.P.H.
TRUCKS	17	%
TOTAL DESIGN ESALS	-	-

TRAFFIC ESTIMATE

US 6

2015 AADT	7,600	V.P.D.
2040 AADT	-	V.P.D.
202. DHV	-	V.P.H.
TRUCKS	4	%
TOTAL DESIGN ESALS	-	-

MINIMUM VERTICAL CLEARANCE

EXISTING US 6
 OVERHEAD STATION = 1205+68.47, 81.08' RT.
 OVERHEAD ELEVATION = 713.89
 DEPTH OF SUPERSTRUCTURE = 5.33'
 UNDERPASS STATION = 231+15.45, 11.79' LT.
 UNDERPASS ELEVATION = 687.33
 MINIMUM VERTICAL CLEARANCE = 21.23'

PRELIMINARY

DESIGN FOR 17°00'00.00" SKEW L.A.

284'-0" x 81'-4" PRETENSIONED PRESTRESSED CONCRETE BEAM BRIDGE - STAGE II

81'-0", 66'-0" END SPANS (BTD BEAM TYPE) 137'-0" INTERIOR SPAN

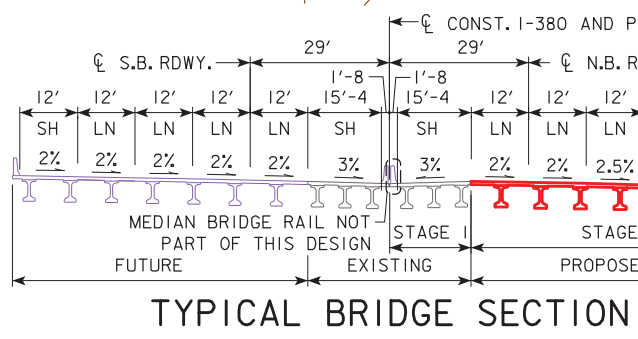
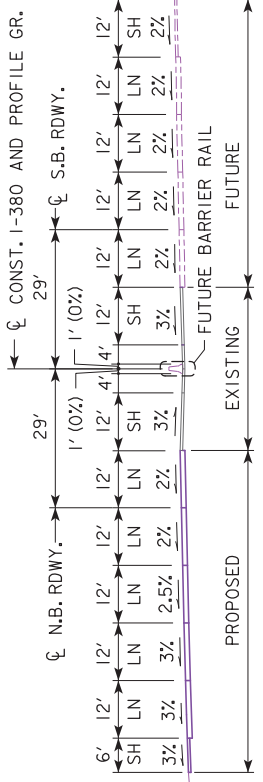
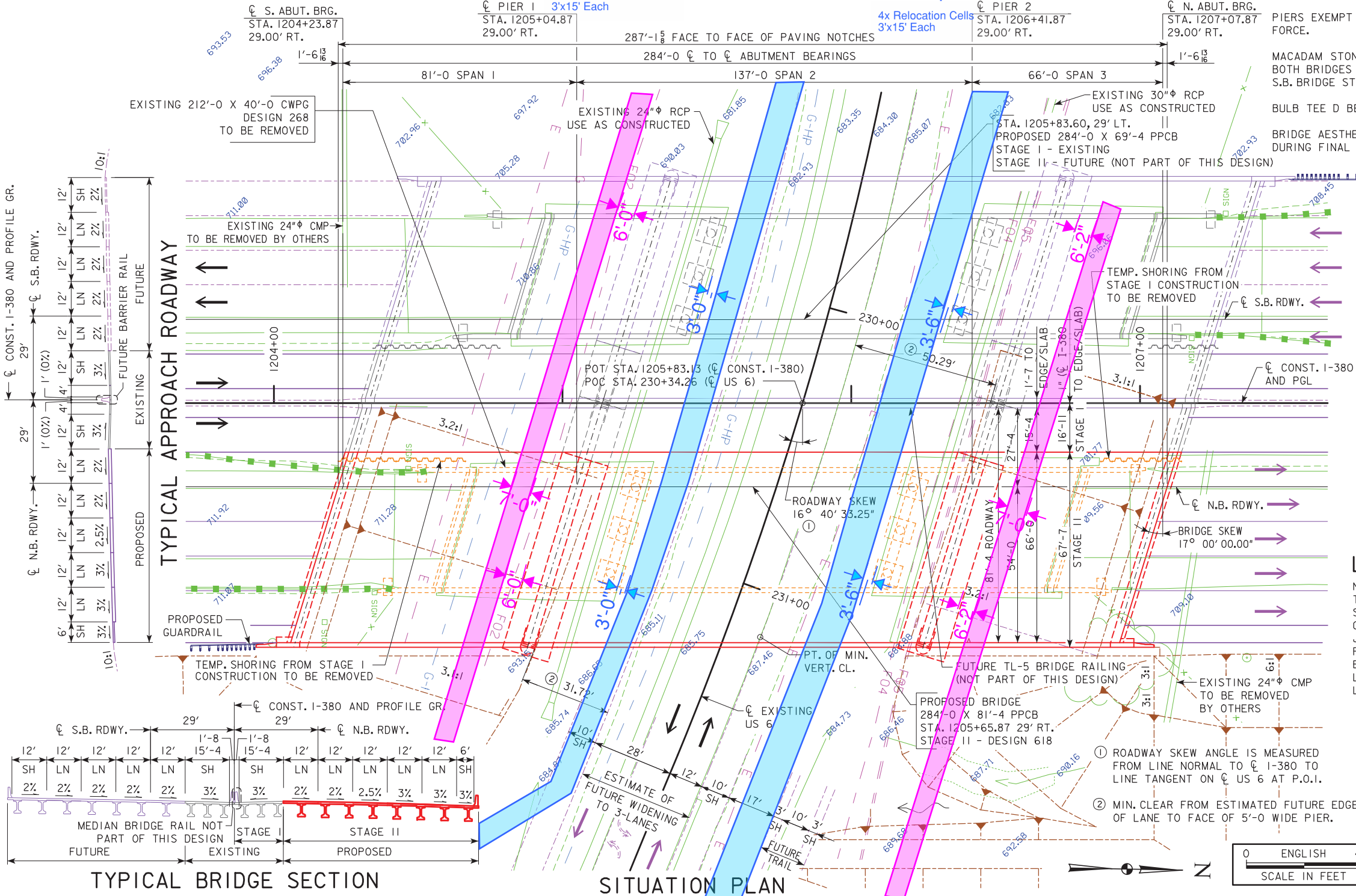
SITUATION PLAN

STATION 1205+65.87, 29' RIGHT CL CONST. I-380

JUNE 2018

JOHNSON COUNTY

IOWA DEPARTMENT OF TRANSPORTATION - HIGHWAY DIVISION
 DESIGN SHEET NO. 1 OF 2 FILE NO. 30864 DESIGN NO. 618

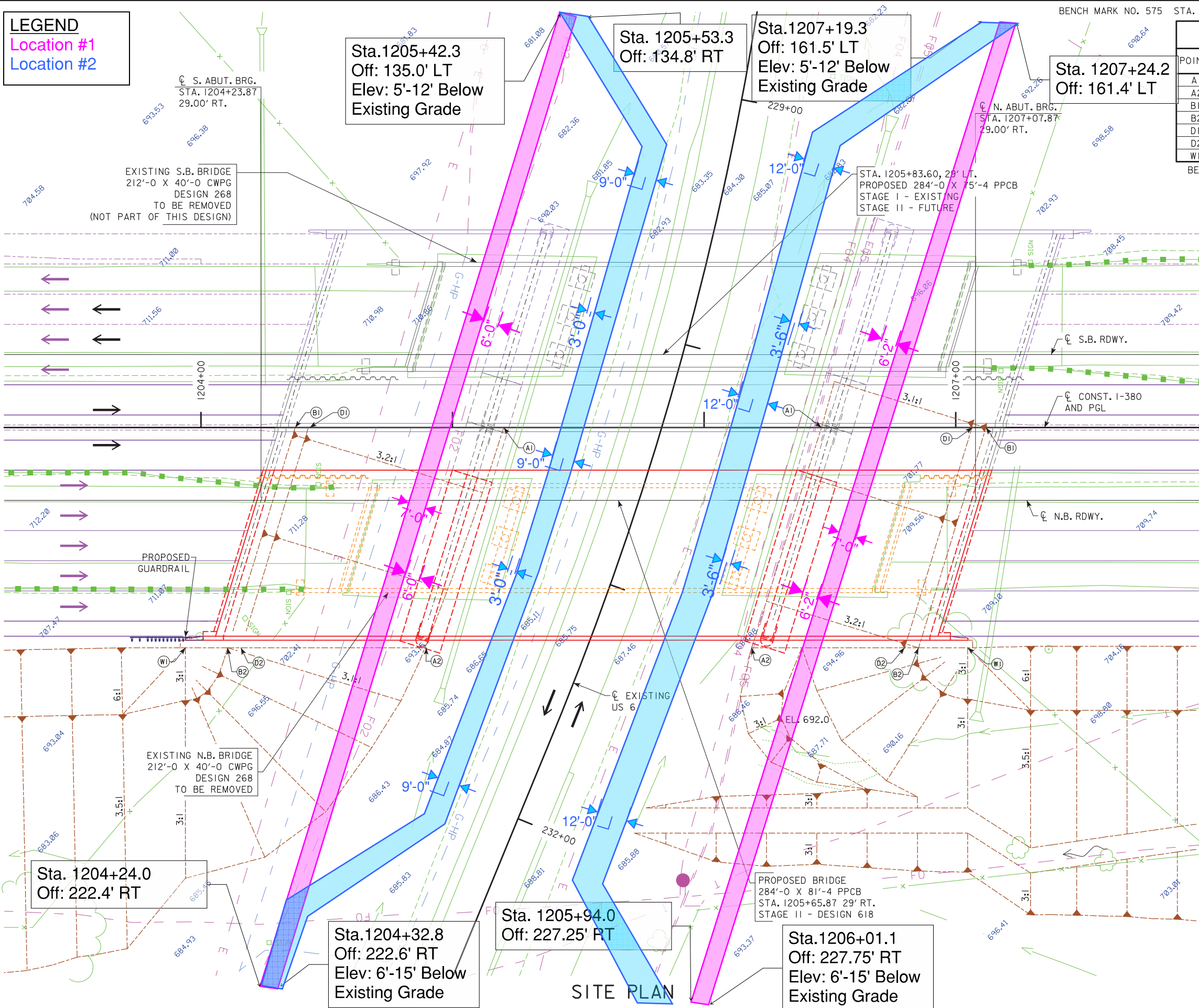


LEGEND
 Location #1
 Location #2

BENCH MARK NO. 575 STA. 11206+88.793 64.63 RT, FD. DOT BUTTON NE, WING BR. ELEV. 712.079

POINTS	SOUTH ABUTMENT			NORTH ABUTMENT		
	STATION	OFFSET	ELEV.	STATION	OFFSET	ELEV.
A1	1205+20.36	0.00'	684.49	1206+46.68	0.00'	686.27
A2	1204+91.44	81.58' RT	685.59	1206+20.83	81.58' RT	687.22
B1	1204+37.44	0.00'	709.48	1207+12.03	0.00'	706.69
B2	1204+10.66	87.58' RT	708.50	1206+85.25	87.58' RT	705.71
D1	1204+43.24	0.00'	707.80	1207+06.60	0.00'	704.92
D2	1204+17.77	81.58' RT	707.80	1206+81.53	81.58' RT	704.92
W1	1203+93.36	87.58' RT	715.50	1207+05.36	87.58' RT	712.34

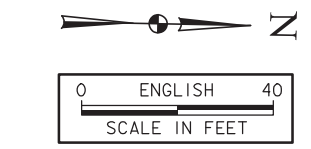
BERM SLOPE ELEVATIONS REFLECT THE GRADING SURFACE



BERM SLOPE LOCATION TABLE

POINTS	SOUTH ABUTMENT			NORTH ABUTMENT		
	STATION	OFFSET	ELEV.	STATION	OFFSET	ELEV.
A1	1205+20.36	0.00'	684.49	1206+46.68	0.00'	686.27
A2	1204+91.44	81.58' RT	685.59	1206+20.83	81.58' RT	687.22
B1	1204+37.44	0.00'	709.48	1207+12.03	0.00'	706.69
B2	1204+10.66	87.58' RT	708.50	1206+85.25	87.58' RT	705.71
D1	1204+43.24	0.00'	707.80	1207+06.60	0.00'	704.92
D2	1204+17.77	81.58' RT	707.80	1206+81.53	81.58' RT	704.92
W1	1203+93.36	87.58' RT	715.50	1207+05.36	87.58' RT	712.34

BERM SLOPE ELEVATIONS REFLECT THE GRADING SURFACE



PRELIMINARY
 DESIGN FOR 17°00'00.00" SKEW L.A.
284'-0" x 81'-4" PRETENSIONED PRESTRESSED CONCRETE BEAM BRIDGE - STAGE II
 81'-0", 66'-0" END SPANS (BTD BEAM TYPE) 137'-0" INTERIOR SPAN
SITUATION PLAN - SITE
 STATION 1205+65.87, 29' RIGHT \bar{C} CONST. 1-380 JUNE 2018
JOHNSON COUNTY
 IOWA DEPARTMENT OF TRANSPORTATION - HIGHWAY DIVISION
 DESIGN SHEET NO. 2 OF 2 FILE NO. 30864 DESIGN NO. 618