

Sta. XXXX SB Median
Build 224' x 15'-4"
PPCB
Design No. 1017

Sta. XXXX SB Outside
Build 224' x 85'-4"
PPCB
Design No. 519

Sta. 1204+07.7
24' X 155.40' CMP
D.A. = Median Only

Sta. XXXX SB Median
Build 284' x 15'-4"
PPCB
Design No. 1217

Sta. XXXX SB Outside
Build 284' x 75'-4"
PPCB
Design No. 619

CLEAR CREEK TWP.
T-80N R-7W
SEC. 27

Extend 24"x170.5'
with 24"x38' RCP
Lt. 726.50
F.L. = Rt. N/A
Other 728.06

SBL Curve Data
Δ = 1° 44' 27.02" (LT)
T = 197.51
L = 394.98
R = 13,000.00
E = 1.50
M = 0.0
X = 0.0

SBL Curve Data
Δ = 1° 44' 27.02" (RT)
T = 197.51
L = 394.98
R = 13,000.00
E = 1.50
M = 0.0
X = 0.0

NBL Curve Data
Δ = 1° 44' 27.02" (RT)
T = 197.51
L = 394.98
R = 13,000.00
E = 1.50
M = 0.0
X = 0.0

NBL Curve Data
Δ = 1° 44' 27.02" (LT)
T = 197.51
L = 394.98
R = 13,000.00
E = 1.50
M = 0.0
X = 0.0

Sta. 11219+24.0
Slew 150' Rt. An.
24' X 64.8' Conc. Pipe
D.A. = 5' Ac. - R

Extend 24"x170.5' RCP
with 24"x28' RCP
Lt. N/A
F.L. = Rt. 731.20
Other 730.26

Extend 24"x64.8' RCP
with 24"x36' RCP
Lt. 733.54
F.L. = Rt. 731.21
Other 732.07
Other 731.21

Sta. 1218+99.06
24' X 64.80' Conc Pipe
D.A. = 5.0' A - H

Sta. 1218+75.06
24' X 170.70' Conc Pipe
D.A. = MEDIAN ONLY

Sta. XXXX NB Median
Build 224' x 15'-4"
PPCB
Design No. 917

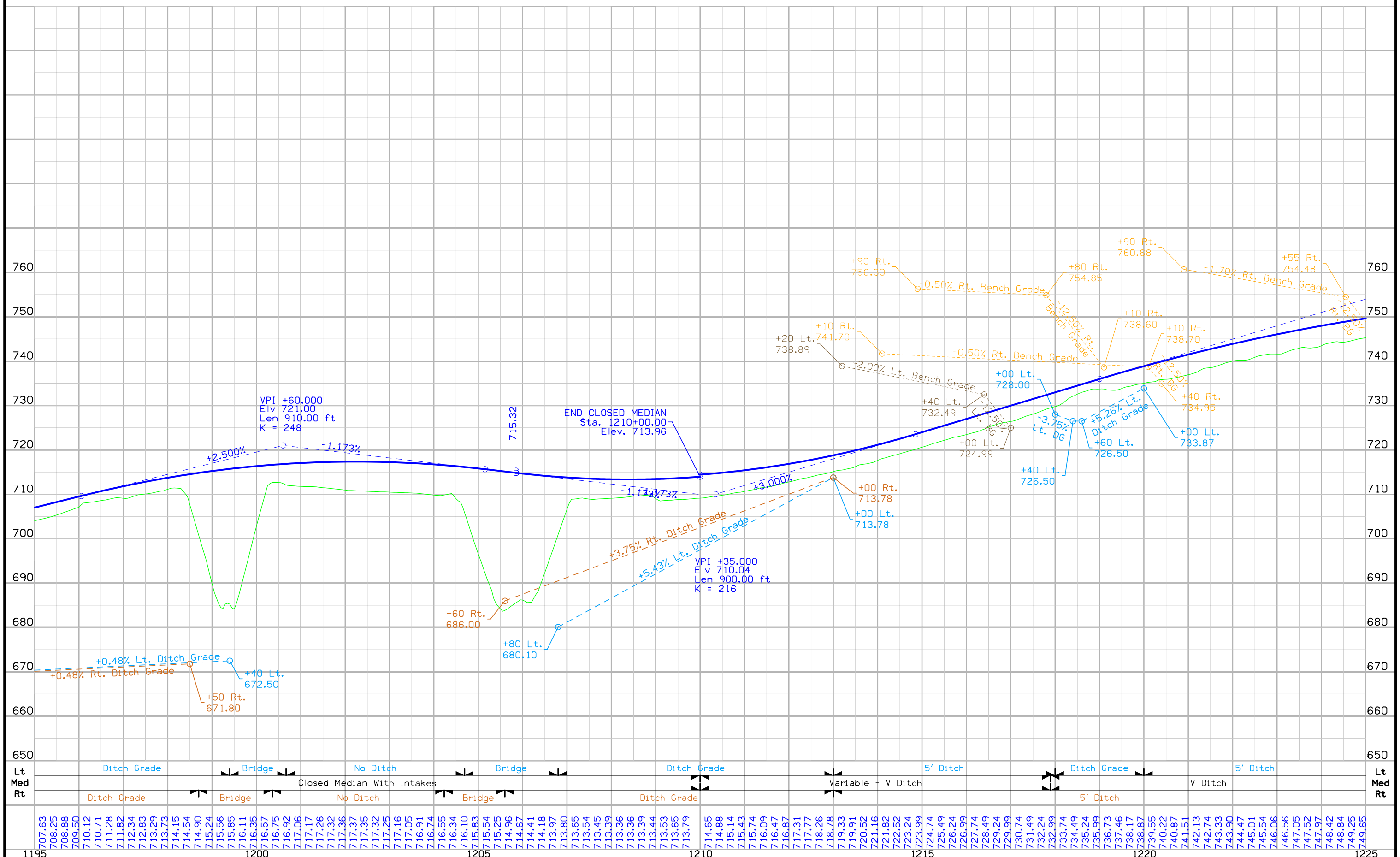
Sta. XXXX NB Outside
Build 224' x 81'-4"
PPCB
Design No. 518

Sta. XXXX NB Median
Build 284' x 15'-4"
PPCB
Design No. 1117

Sta. XXXX NB Outside
Build 284' x 75'-4"
PPCB
Design No. 618



Bench Grade Lt. No Bench Bench Grade No Bench NB Bench Grade BG



FILE NO.	ENGLISH	DESIGN TEAM	JOHNSON COUNTY	PROJECT NUMBER	SHEET NUMBER
1195		Holst\Thede		IMN-080-6(235)239--0E-52	E.10