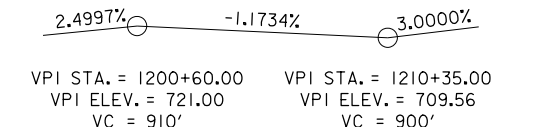


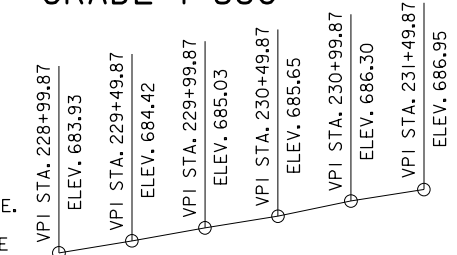
NOTE: TOP OF BRIDGE DECK AT CENTERLINE N.B. ROADWAY IS +0.24' ABOVE THE PROFILE GRADE TO ACCOUNT FOR CROSS SLOPE.

LONGITUDINAL SECTION ALONG C N.B. ROADWAY
(LONGITUDINAL SECTION THROUGH FUTURE STAGE II CONSTRUCTION)

NOTES:
TL-5 MEDIAN BRIDGE RAIL TO BE CONSTRUCTED WITH A FUTURE DESIGN.
PIERS EXEMPT FROM VEHICULAR COLLISION FORCE.
STAGE I OF S.B. BRIDGE (SEPARATE DESIGN) TO BE CONSTRUCTED WITH THIS DESIGN. SLOTTED DRAIN REQUIRED IN THE 2" GAP.
BULB TEE D BEAMS AND WALL PIERS.
BRIDGE AESTHETICS TO BE INCORPORATED DURING FINAL DESIGN.
BERM SLOPE LOCATION TABLE IS NOT REQUIRED FOR STAGE I CONSTRUCTION.



PROPOSED PROFILE GRADE I-380



EXISTING PROFILE GRADE US 6

UTILITIES LEGEND:

- E1 - POWER-LINN CO. REC
- F02 - FIBER OPTIC-SOUTH SLOPE COOP. TEL. CO.
- F04 - FIBER OPTIC-MCLEOD
- F05 - FIBER OPTIC-IOWA TELCOM
- G-HP - HIGH PRESSURE GAS-MIDAMERICAN ENERGY
- T1 - TELEPHONE-IOWA TELCOM

CURVE DATA

I-380
PI STA. 1191+13.06
 $\Delta = 22^\circ 38' 40.61''$ (RT)
T = 655.54'
L = 1293.98'
E = 64.98'
R = 3274.04'
e = 5.2%
I = 312'
x = 150'
PC STA. 1184+57.52
PT STA. 1197+51.50

TRAFFIC ESTIMATE

I-380 (NORTHBOUND)		
2015 AADT	25,650	V.P.D.
2040 AADT	37,270	V.P.D.
202. DHV	-	V.P.H.
TRUCKS	17	%
TOTAL DESIGN ESALS	-	

CURVE DATA

US 6
PI STA. 230+11.99
 $\Delta = 13^\circ 28' 23.85''$ (RT)
T = 153.03'
L = 304.65'
E = 9.01'
R = 1295.55
PC STA. 228+58.96
PT STA. 231+63.62

TRAFFIC ESTIMATE

US 6		
2015 AADT	7,600	V.P.D.
2040 AADT	-	V.P.D.
202. DHV	-	V.P.H.
TRUCKS	4	%
TOTAL DESIGN ESALS	-	

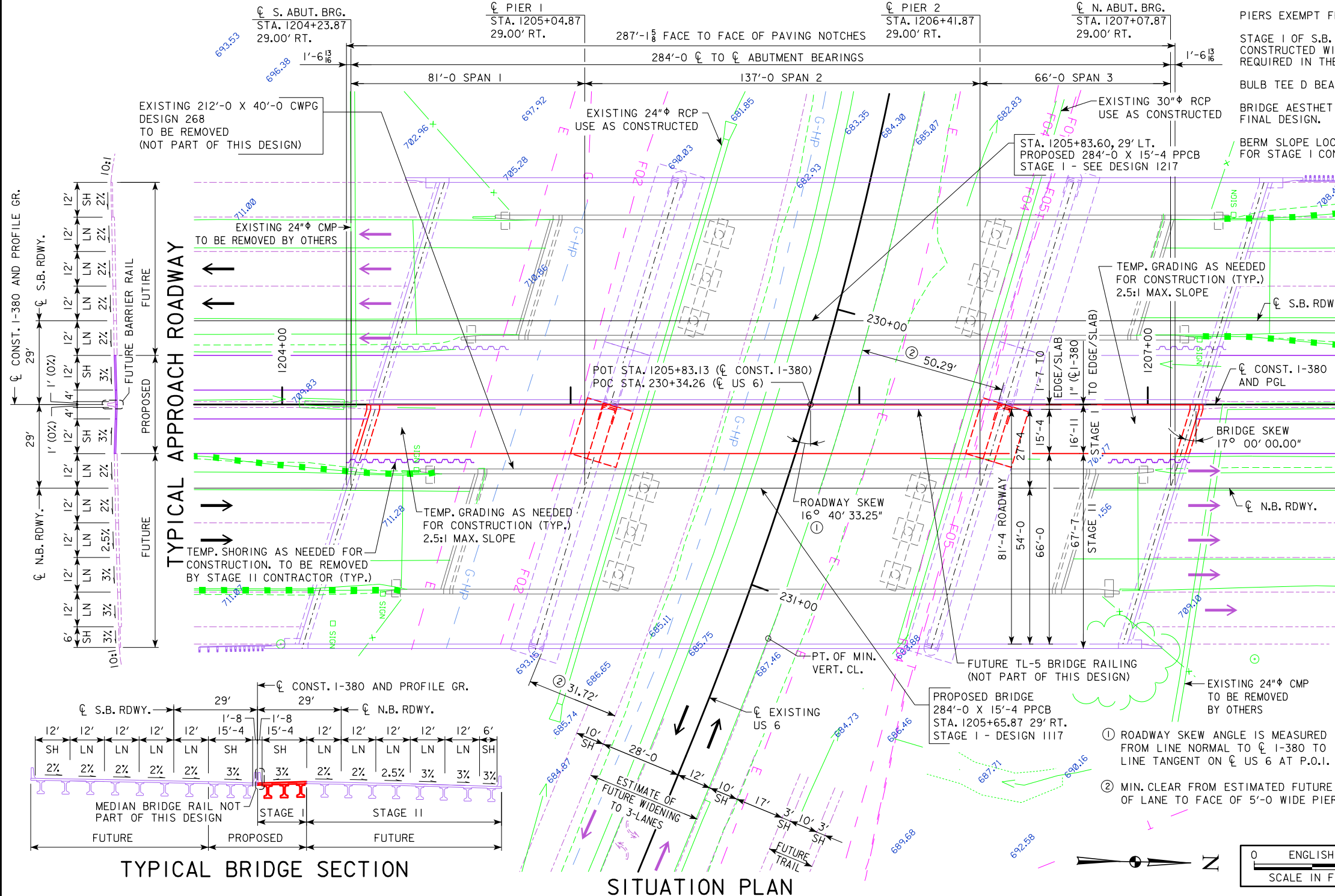
LOCATION

N.B. I-380 OVER US 6
T-80N R-TW
SECTION 27
CLEAR CREEK TOWNSHIP
JOHNSON COUNTY
FHWA NO. 600411
BRIDGE MAINT. NO. 5200.8R380
LATITUDE 41.705367°
LONGITUDE -91.642002°

MINIMUM VERTICAL CLEARANCE

EXISTING US 6
OVERHEAD STATION = 1205+68.47, 81.08' RT.
OVERHEAD ELEVATION = 713.89
DEPTH OF SUPERSTRUCTURE = 5.33'
UNDERPASS STATION = 231+15.45, 11.79' LT.
UNDERPASS ELEVATION = 687.33'
MINIMUM VERTICAL CLEARANCE = 21.23'
PRELIMINARY

DESIGN FOR 17°00'00.00" SKEW L.A.
284'-0" x 15'-4" PRETENSIONED PRESTRESSED CONCRETE BEAM BRIDGE - STAGE I
81'-0", 66'-0" END SPANS (BTD BEAM TYPE) 137'-0" CENTER SPAN
SITUATION PLAN
STATION 1205+65.87, 29' RIGHT C. CONST. I-380
JUNE 2018
JOHNSON COUNTY
IOWA DEPARTMENT OF TRANSPORTATION - HIGHWAY DIVISION
DESIGN SHEET NO. 1 OF 1 FILE NO. 30864 DESIGN NO. 1117

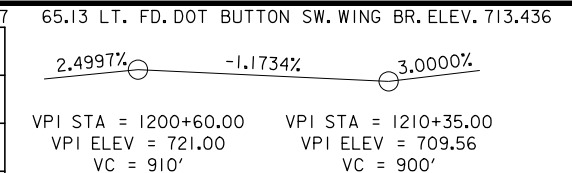
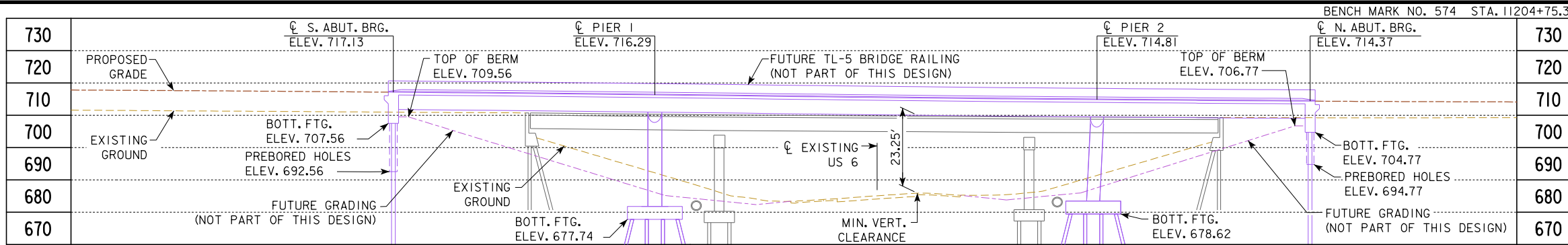


TYPICAL BRIDGE SECTION

SITUATION PLAN

- ① ROADWAY SKEW ANGLE IS MEASURED FROM LINE NORMAL TO C I-380 TO LINE TANGENT ON C US 6 AT P.O.I.
- ② MIN. CLEAR FROM ESTIMATED FUTURE EDGE OF LANE TO FACE OF 5'-0" WIDE PIER.





NOTE: TOP OF BRIDGE DECK AT CENTERLINE S.B. ROADWAY IS +0.72' ABOVE THE PROFILE GRADE TO ACCOUNT FOR CROSS SLOPE.

LONGITUDINAL SECTION ALONG \bar{C} S.B. ROADWAY (LONGITUDINAL SECTION THROUGH FUTURE STAGE II CONSTRUCTION)

NOTES:
TL-5 MEDIAN BRIDGE RAIL TO BE CONSTRUCTED WITH A FUTURE DESIGN.

PIERS EXEMPT FROM VEHICULAR COLLISION FORCE.

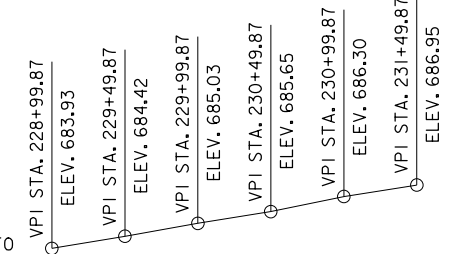
STAGE I OF N.B. BRIDGE (SEPARATE DESIGN) TO BE CONSTRUCTED WITH THIS DESIGN. SLOTTED DRAIN REQUIRED IN THE 2" GAP.

BULB TEE D BEAMS AND WALL PIERS.

BRIDGE AESTHETICS TO BE INCORPORATED DURING FINAL DESIGN.

BERM SLOPE LOCATION TABLE IS NOT REQUIRED FOR STAGE I CONSTRUCTION.

PROPOSED PROFILE GRADE I-380



EXISTING PROFILE GRADE US 6

TRAFFIC ESTIMATE

I-380 (SOUTHBOUND)			
2015 AADT	25,650	V.P.D.	
2040 AADT	37,270	V.P.D.	
202. DHV		V.P.H.	
TRUCKS	17	%	
TOTAL DESIGN ESALS			

CURVE DATA

I-380
PI STA. 1191+13.06
 $\Delta = 22^\circ 38' 40.61"$ (RT)
T = 655.54'
L = 1293.98'
E = 64.98'
R = 3274.04'
e = 5.2%
I = 312'
x = 150'
PC STA. 1184+57.52
PT STA. 1197+51.50

TRAFFIC ESTIMATE

US 6			
2015 AADT	7,600	V.P.D.	
2040 AADT		V.P.D.	
202. DHV		V.P.H.	
TRUCKS	4	%	
TOTAL DESIGN ESALS			

CURVE DATA

US 6
PI STA. 230+11.99
 $\Delta = 13^\circ 28' 23.85"$ (RT)
T = 153.03'
L = 304.65'
E = 9.01'
R = 1295.55
PC STA. 228+58.96
PT STA. 231+63.62

MINIMUM VERTICAL CLEARANCE

EXISTING US 6
OVERHEAD STATION = 1205+96.71, 3.58' LT.
OVERHEAD ELEVATION = 714.78
DEPTH OF SUPERSTRUCTURE = 5.33'
UNDERPASS STATION = 230+26.91, 11.97' LT.
UNDERPASS ELEVATION = 686.20
MINIMUM VERTICAL CLEARANCE = 23.25'

LOCATION

S.B. I-380 OVER US 6
T-80N R-7W
SECTION 27
CLEAR CREEK TOWNSHIP
JOHNSON COUNTY
FHWA NO. 600421
BRIDGE MAINT. NO. 5200.8L380
LATITUDE 41.705416°
LONGITUDE -91.642214°

UTILITIES LEGEND:

- E1 - POWER-LINN CO. REC
- F02 - FIBER OPTIC-SOUTH SLOPE COOP. TEL. CO.
- F04 - FIBER OPTIC-MCLEOD
- F05 - FIBER OPTIC-IOWA TELCOM
- G-HP - HIGH PRESSURE GAS-MIDAMERICAN ENERGY
- TI - TELEPHONE-IOWA TELCOM

PRELIMINARY

DESIGN FOR 17°00'00.00" SKEW L.A.

284'-0 x 15'-4 PRETENSIONED PRESTRESSED CONCRETE BEAM BRIDGE - STAGE I

81'-0, 66'-0 END SPANS (BTD BEAM TYPE) 137'-0 CENTER SPAN

SITUATION PLAN

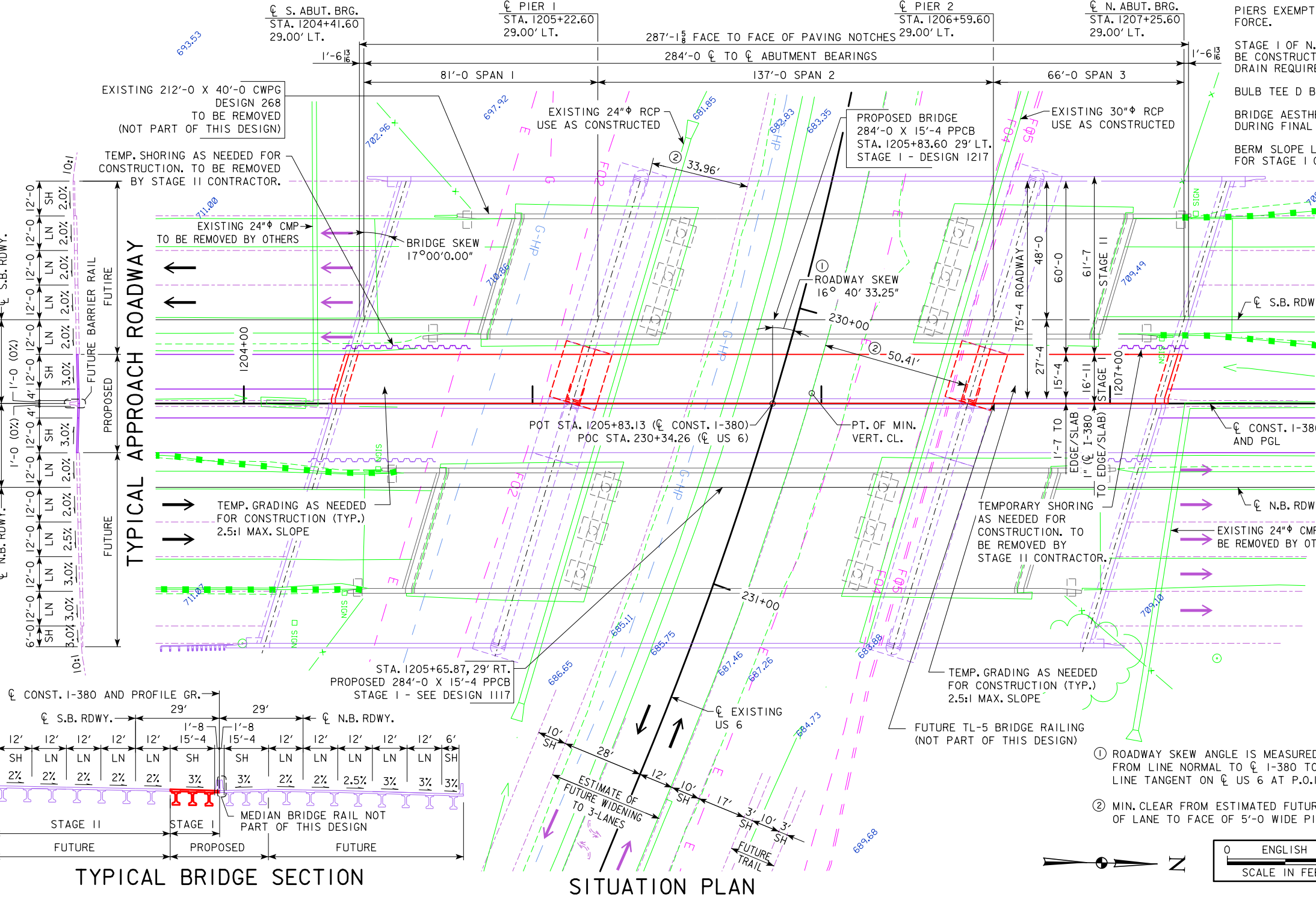
STATION 1205+83.60, 29' LEFT \bar{C} CONST. I-380

JUNE 2018

JOHNSON COUNTY

IOWA DEPARTMENT OF TRANSPORTATION - HIGHWAY DIVISION

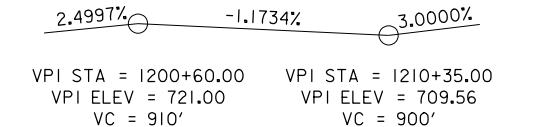
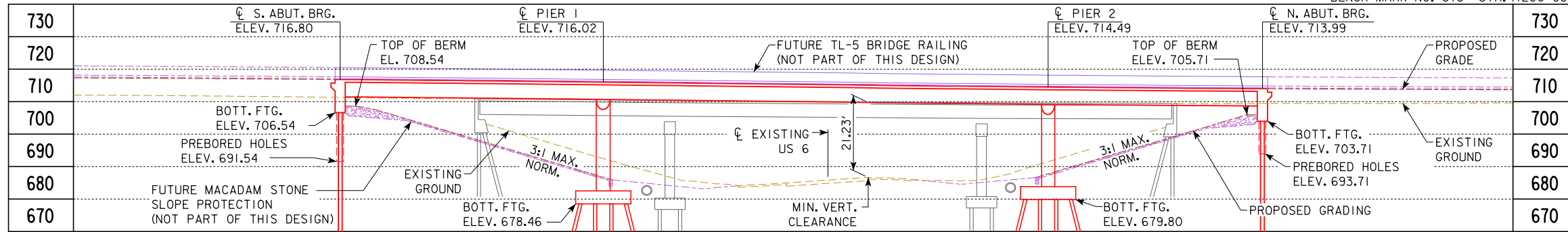
DESIGN SHEET NO. 1 OF 1 FILE NO. 30864 DESIGN NO. 1217



TYPICAL BRIDGE SECTION

SITUATION PLAN

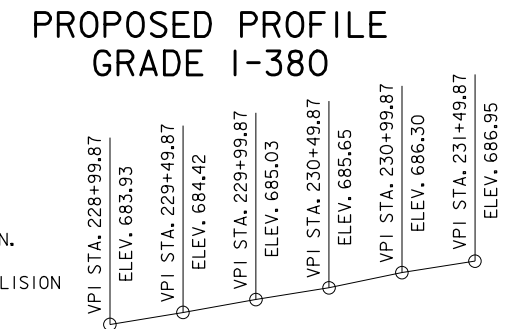




NOTE: TOP OF BRIDGE DECK AT CENTERLINE N.B. ROADWAY IS +0.24' ABOVE THE PROFILE GRADE TO ACCOUNT FOR CROSS SLOPE.

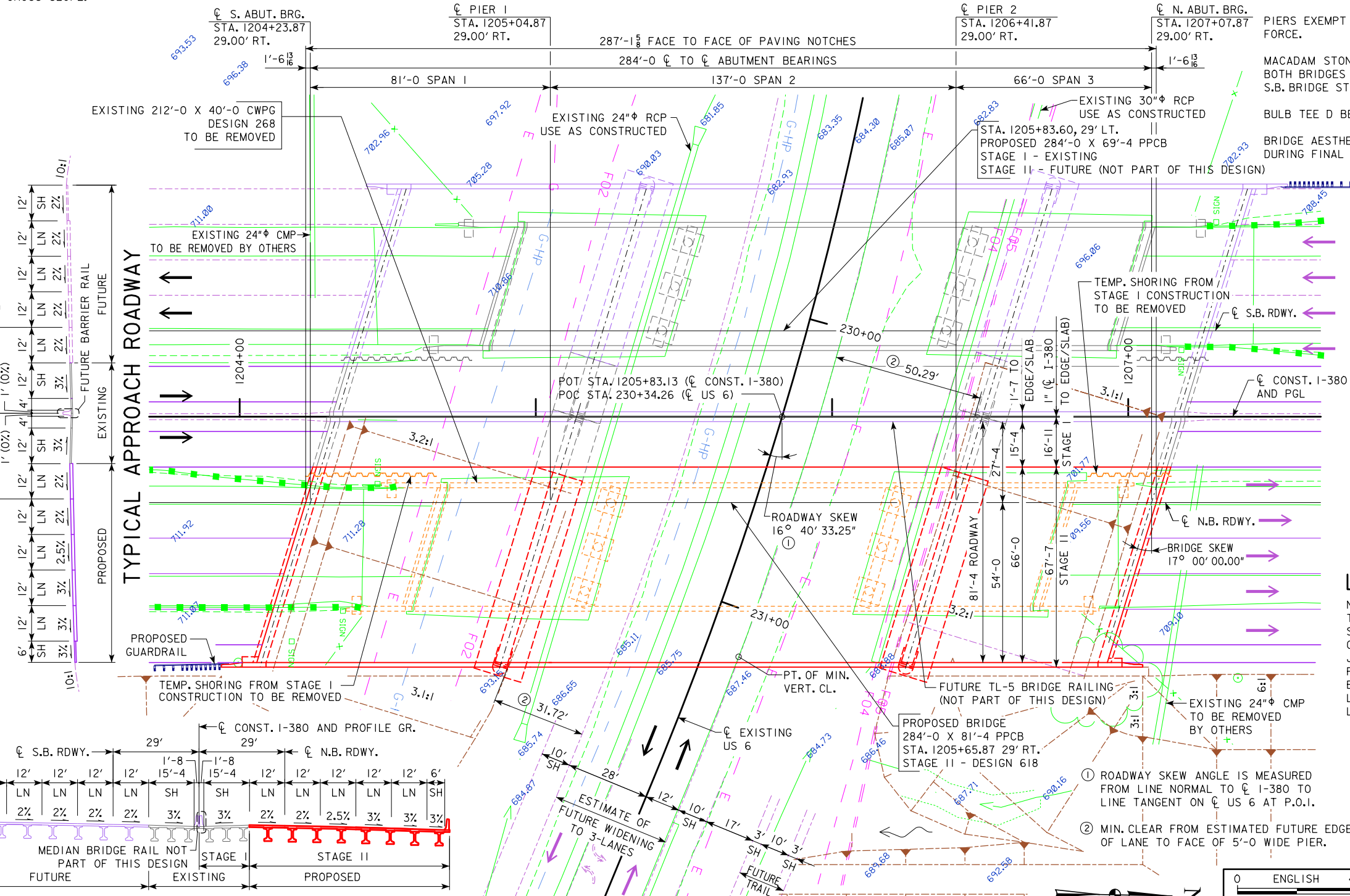
LONGITUDINAL SECTION ALONG C N.B. ROADWAY

NOTES:
TL-5 MEDIAN BRIDGE RAIL TO BE CONSTRUCTED WITH A FUTURE DESIGN.
PIERS EXEMPT FROM VEHICULAR COLLISION FORCE.
MACADAM STONE SLOPE PROTECTION FOR BOTH BRIDGES TO BE INSTALLED WITH THE S.B. BRIDGE STAGE II CONSTRUCTION.
BULB TEE D BEAMS AND WALL PIERS.
BRIDGE AESTHETICS TO BE INCORPORATED DURING FINAL DESIGN.



EXISTING PROFILE GRADE US 6

- UTILITIES LEGEND:
- E1 - POWER-LINN CO. REC
 - F0 - FIBER OPTIC-STATE OF IOWA (ICN)
 - F02 - FIBER OPTIC-SOUTH SLOPE COOP. TEL. CO.
 - F04 - FIBER OPTIC-MCLEOD
 - F05 - FIBER OPTIC-IOWA TELCOM
 - G-HP - HIGH PRESSURE GAS-MIDAMERICAN ENERGY
 - T1 - TELEPHONE-IOWA TELCOM



CURVE DATA

I-380
PI STA. 1191+13.06
 $\Delta = 22^\circ 38' 40.61''$ (RT)
T = 655.54'
L = 1293.98'
E = 64.98'
R = 3274.04'
e = 5.2%
I = 312'
x = 150'
PC STA. 1184+57.52
PT STA. 1197+51.50

CURVE DATA

US 6
PI STA. 230+11.99
 $\Delta = 13^\circ 28' 23.85''$ (RT)
T = 153.03'
L = 304.65'
E = 9.01'
R = 1295.55
PC STA. 228+58.96
PT STA. 231+63.62

LOCATION

N.B. I-380 OVER US 6
T-80N R-7W
SECTION 27
CLEAR CREEK TOWNSHIP
JOHNSON COUNTY
FHWA NO. 600411
BRIDGE MAINT. NO. 5200.8R380
LATITUDE 41.705367°
LONGITUDE -91.642002°

TRAFFIC ESTIMATE

I-380 (NORTHBOUND)

2015 AADT	25,650	V.P.D.
2040 AADT	37,270	V.P.D.
202. DHV	-	V.P.H.
TRUCKS	17	%
TOTAL DESIGN ESALS	-	-

TRAFFIC ESTIMATE

US 6

2015 AADT	7,600	V.P.D.
2040 AADT	-	V.P.D.
202. DHV	-	V.P.H.
TRUCKS	4	%
TOTAL DESIGN ESALS	-	-

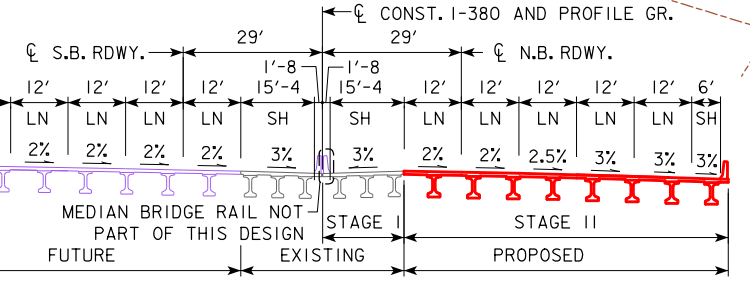
MINIMUM VERTICAL CLEARANCE

EXISTING US 6
OVERHEAD STATION = 1205+68.47, 81.08' RT.
OVERHEAD ELEVATION = 713.89
DEPTH OF SUPERSTRUCTURE = 5.33'
UNDERPASS STATION = 231+15.45, 11.79' LT.
UNDERPASS ELEVATION = 687.33
MINIMUM VERTICAL CLEARANCE = 21.23'

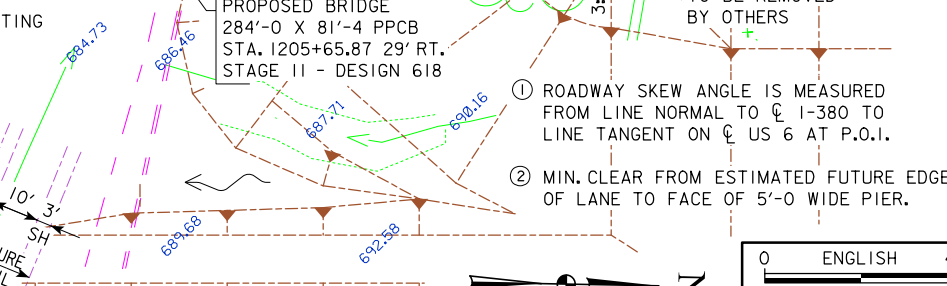
PRELIMINARY

DESIGN FOR 17°00'00.00" SKEW L.A.
284'-0" x 81'-4" PRETENSIONED PRESTRESSED CONCRETE BEAM BRIDGE - STAGE II
81'-0", 66'-0" END SPANS (BTD BEAM TYPE) 137'-0" INTERIOR SPAN
SITUATION PLAN
STATION 1205+65.87, 29' RIGHT C CONST. I-380
JUNE 2018
JOHNSON COUNTY
IOWA DEPARTMENT OF TRANSPORTATION - HIGHWAY DIVISION
DESIGN SHEET NO. 1 OF 2 FILE NO. 30864 DESIGN NO. 618

TYPICAL BRIDGE SECTION



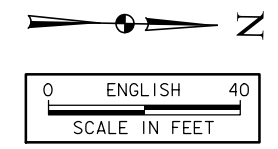
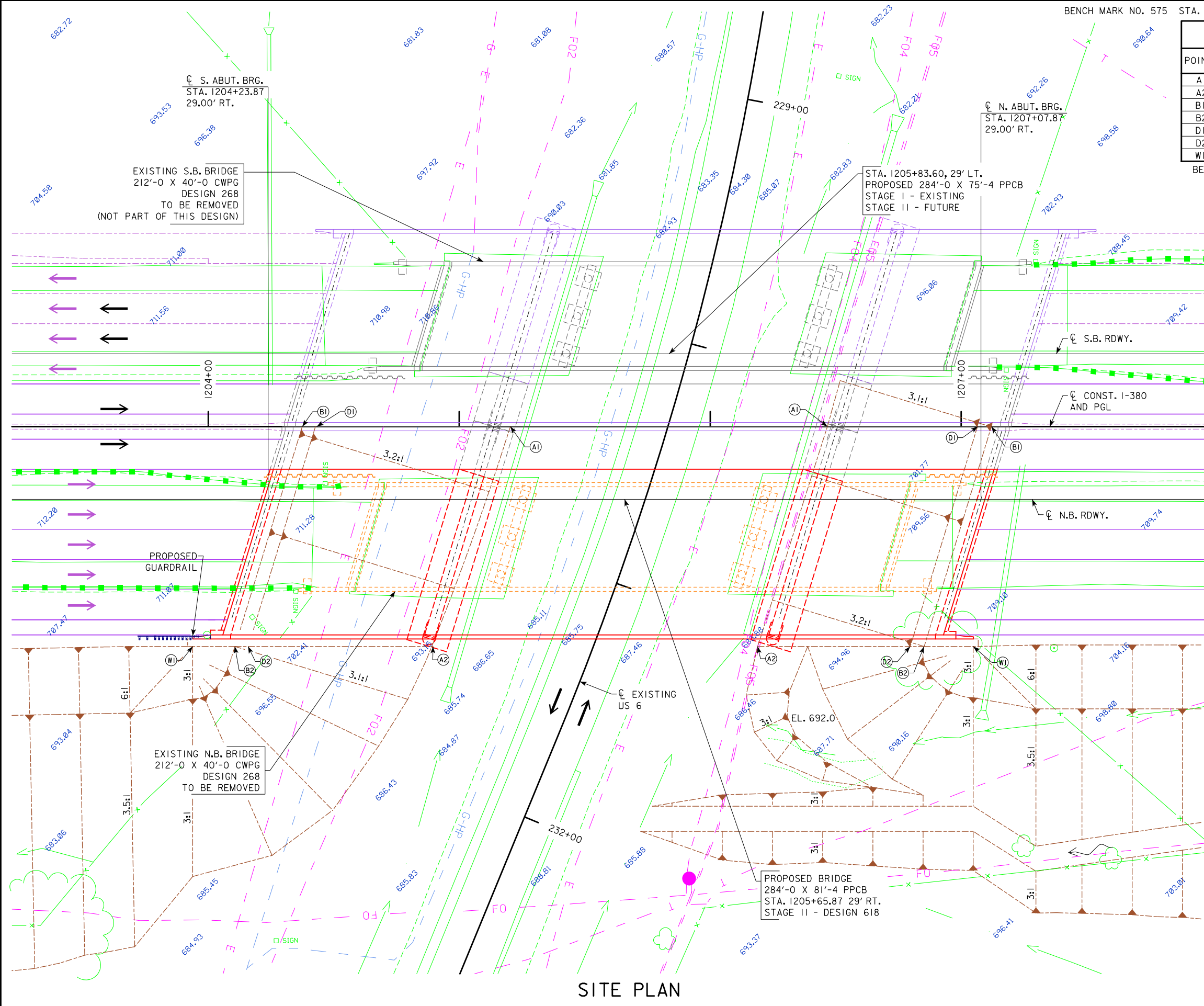
SITUATION PLAN



BERM SLOPE LOCATION TABLE

POINTS	SOUTH ABUTMENT			NORTH ABUTMENT		
	STATION	OFFSET	ELEV.	STATION	OFFSET	ELEV.
A1	1205+20.36	0.00'	684.49	1206+46.68	0.00'	686.27
A2	1204+91.44	81.58' RT	685.59	1206+20.83	81.58' RT	687.22
B1	1204+37.44	0.00'	709.48	1207+12.03	0.00'	706.69
B2	1204+10.66	87.58' RT	708.50	1206+85.25	87.58' RT	705.71
D1	1204+43.24	0.00'	707.80	1207+06.60	0.00'	704.92
D2	1204+17.77	81.58' RT	707.80	1206+81.53	81.58' RT	704.92
W1	1203+93.36	87.58' RT	715.50	1207+05.36	87.58' RT	712.34

BERM SLOPE ELEVATIONS REFLECT THE GRADING SURFACE



PRELIMINARY

DESIGN FOR 17°00'00.00" SKEW L.A.

284'-0 x 81'-4 PRETENSIONED PRESTRESSED CONCRETE BEAM BRIDGE - STAGE II

81'-0, 66'-0 END SPANS (BTD BEAM TYPE) 137'-0 INTERIOR SPAN

SITUATION PLAN - SITE

STATION 1205+65.87, 29' RIGHT \bar{C} CONST. 1-380

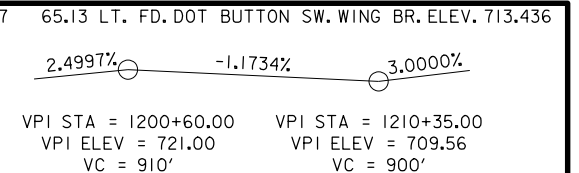
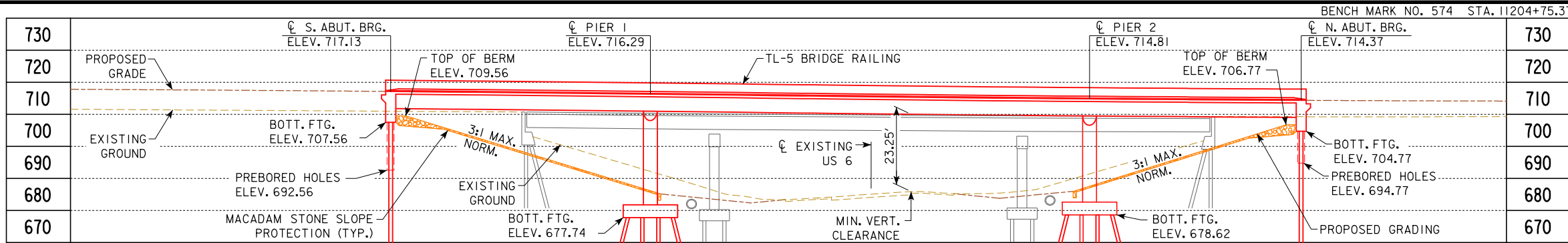
JUNE 2018

JOHNSON COUNTY

IOWA DEPARTMENT OF TRANSPORTATION - HIGHWAY DIVISION

DESIGN SHEET NO. 2 OF 2 FILE NO. 30864 DESIGN NO. 618

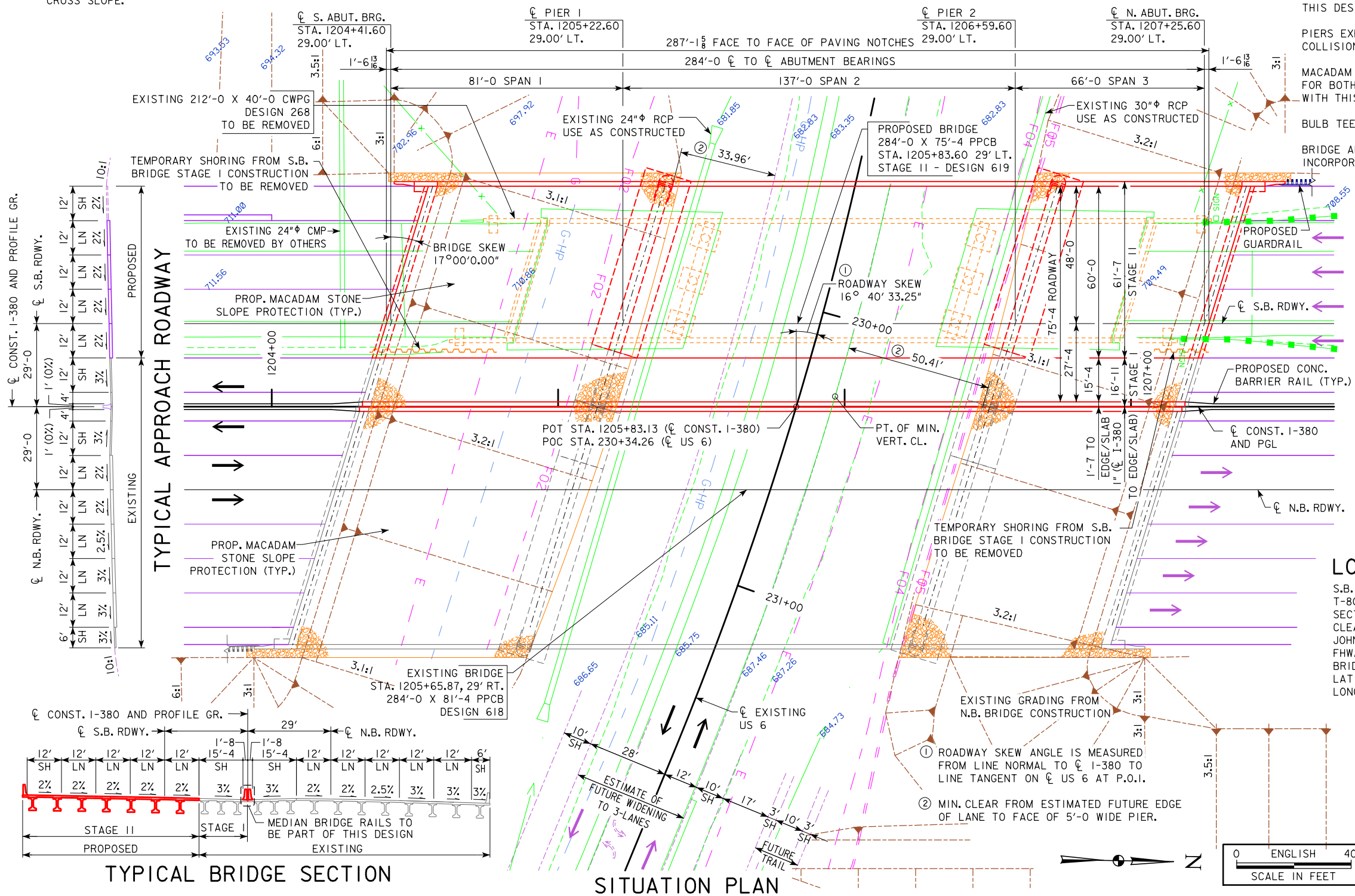
SITE PLAN



NOTE: TOP OF BRIDGE DECK AT CENTERLINE S.B. ROADWAY IS +0.72' ABOVE THE PROFILE GRADE TO ACCOUNT FOR CROSS SLOPE.

LONGITUDINAL SECTION ALONG S.B. ROADWAY

NOTES:
TL-5 MEDIAN BRIDGE RAILS ON BOTH BRIDGES TO BE CONSTRUCTED WITH THIS DESIGN.
PIERS EXEMPT FROM VEHICULAR COLLISION FORCE.
MACADAM STONE SLOPE PROTECTION FOR BOTH BRIDGES TO BE INSTALLED WITH THIS DESIGN.
BULB TEE D BEAMS AND WALL PIERS.
BRIDGE AESTHETICS TO BE INCORPORATED DURING FINAL DESIGN.



NOTES:
PIERS EXEMPT FROM VEHICULAR COLLISION FORCE.
MACADAM STONE SLOPE PROTECTION FOR BOTH BRIDGES TO BE INSTALLED WITH THIS DESIGN.
BULB TEE D BEAMS AND WALL PIERS.
BRIDGE AESTHETICS TO BE INCORPORATED DURING FINAL DESIGN.

CURVE DATA
I-380
PI STA. 1191+13.06
 $\Delta = 22^\circ 38' 40.61''$ (RT)
T = 655.54'
L = 1293.98'
E = 64.98'
R = 3274.04'
e = 5.2%
I = 312'
x = 150'

TRAFFIC ESTIMATE
I-380 (SOUTHBOUND)
2015 AADT 25,650 V.P.D.
2040 AADT 37,270 V.P.D.
202. DHV - V.P.H.
TRUCKS 17 %
TOTAL DESIGN ESALS -

CURVE DATA
US 6
PI STA. 230+11.99
 $\Delta = 13^\circ 28' 23.85''$ (RT)
T = 153.03'
L = 304.65'
E = 9.01'
R = 1295.55
PC STA. 228+58.96
PT STA. 231+63.62

LOCATION
S.B. I-380 OVER US 6
T-80N R-7W
SECTION 27
CLEAR CREEK TOWNSHIP
JOHNSON COUNTY
FHWA NO. 600421
BRIDGE MAINT. NO. 5200.8L380
LATITUDE 41.705416°
LONGITUDE -91.642214°

EXISTING PROFILE GRADE US 6

UTILITIES LEGEND:
E1-POWER-LINN CO. REC
F02-FIBER OPTIC-SOUTH SLOPE COOP. TEL. CO.
F04-FIBER OPTIC-MCLEOD
F05-FIBER OPTIC-IOWA TELCOM
G-HP-HIGH PRESSURE GAS-MIDAMERICAN ENERGY
T1-TELEPHONE-IOWA TELCOM

TRAFFIC ESTIMATE
US 6
2015 AADT 7,600 V.P.D.
2040 AADT - V.P.D.
202. DHV - V.P.H.
TRUCKS 4 %
TOTAL DESIGN ESALS -

TRAFFIC ESTIMATE
US 6
2015 AADT 7,600 V.P.D.
2040 AADT - V.P.D.
202. DHV - V.P.H.
TRUCKS 4 %
TOTAL DESIGN ESALS -

MINIMUM VERTICAL CLEARANCE
EXISTING US 6
OVERHEAD STATION = 1205+96.71, 3.58' LT.
OVERHEAD ELEVATION = 714.78
DEPTH OF SUPERSTRUCTURE = 5.33'
UNDERPASS STATION = 230+26.91, 11.97' LT.
UNDERPASS ELEVATION = 686.20
MINIMUM VERTICAL CLEARANCE = 23.25'
PRELIMINARY

DESIGN FOR 17°00'00.00" SKEW L.A.
284'-0 x 75'-4 PRETENSIONED PRESTRESSED CONCRETE BEAM BRIDGE - STAGE II
81'-0, 66'-0 END SPANS (BTD BEAM TYPE) 137'-0 INTERIOR SPAN
SITUATION PLAN
STATION 1205+83.60, 29' LEFT S.B. RDWY.
JUNE 2018
JOHNSON COUNTY
IOWA DEPARTMENT OF TRANSPORTATION - HIGHWAY DIVISION
DESIGN SHEET NO. 1 OF 2 FILE NO. 30864 DESIGN NO. 619

POINTS	SOUTH ABUTMENT			NORTH ABUTMENT		
	STATION	OFFSET	ELEV.	STATION	OFFSET	ELEV.
A1	I205+43.05	81.58' LT	683.56	I206+67.21	81.58' LT	685.50
A2	I205+20.36	0.00'	684.49	I206+46.68	0.00'	686.27
B1	I204+62.38	81.58' LT	709.56	I207+36.97	81.58' LT	706.77
B2	I204+37.44	0.00'	709.48	I207+12.03	0.00'	706.69
D1	I204+67.65	81.58' LT	707.80	I207+31.42	81.58' LT	704.92
D2	I204+43.24	0.00'	707.80	I207+06.60	0.00'	704.92
W1	I204+42.27	81.58' LT	718.00	I207+54.27	81.58' LT	714.97

BERM SLOPE ELEVATIONS REFLECT THE GRADING SURFACE

PROPOSED BRIDGE
284'-0 X 75'-4 PPCB
STA. 1205+83.60 29' LT.
STAGE II - DESIGN 619

EXISTING 212'-0 X 40'-0 CWPG
DESIGN 268
TO BE REMOVED

PROP. MACADAM STONE
SLOPE PROTECTION (TYP.)

PROPOSED GUARDRAIL

PROPOSED CONC.
BARRIER RAIL (TYP.)

CONST. I-380
AND PGL

N.B. RDWY.

EXISTING BRIDGE
STA. 1205+65.87, 29' RT.
284'-0 X 81'-4 PPCB
DESIGN 618

EXISTING GRADING FROM
N.B. BRIDGE CONSTRUCTION

SITE PLAN



PRELIMINARY

DESIGN FOR 17°00'00.00" SKEW L.A.

284'-0 x 75'-4 PRETENSIONED PRESTRESSED CONCRETE BEAM BRIDGE - STAGE II

81'-0, 66'-0 END SPANS (BTD BEAM TYPE) 137'-0 INTERIOR SPAN

SITUATION PLAN - SITE

STATION 1205+83.60, 29' LEFT CL CONST. I-380

JUNE 2018

JOHNSON COUNTY

IOWA DEPARTMENT OF TRANSPORTATION - HIGHWAY DIVISION

DESIGN SHEET NO. 2 OF 2 FILE NO. 30864 DESIGN NO. 619