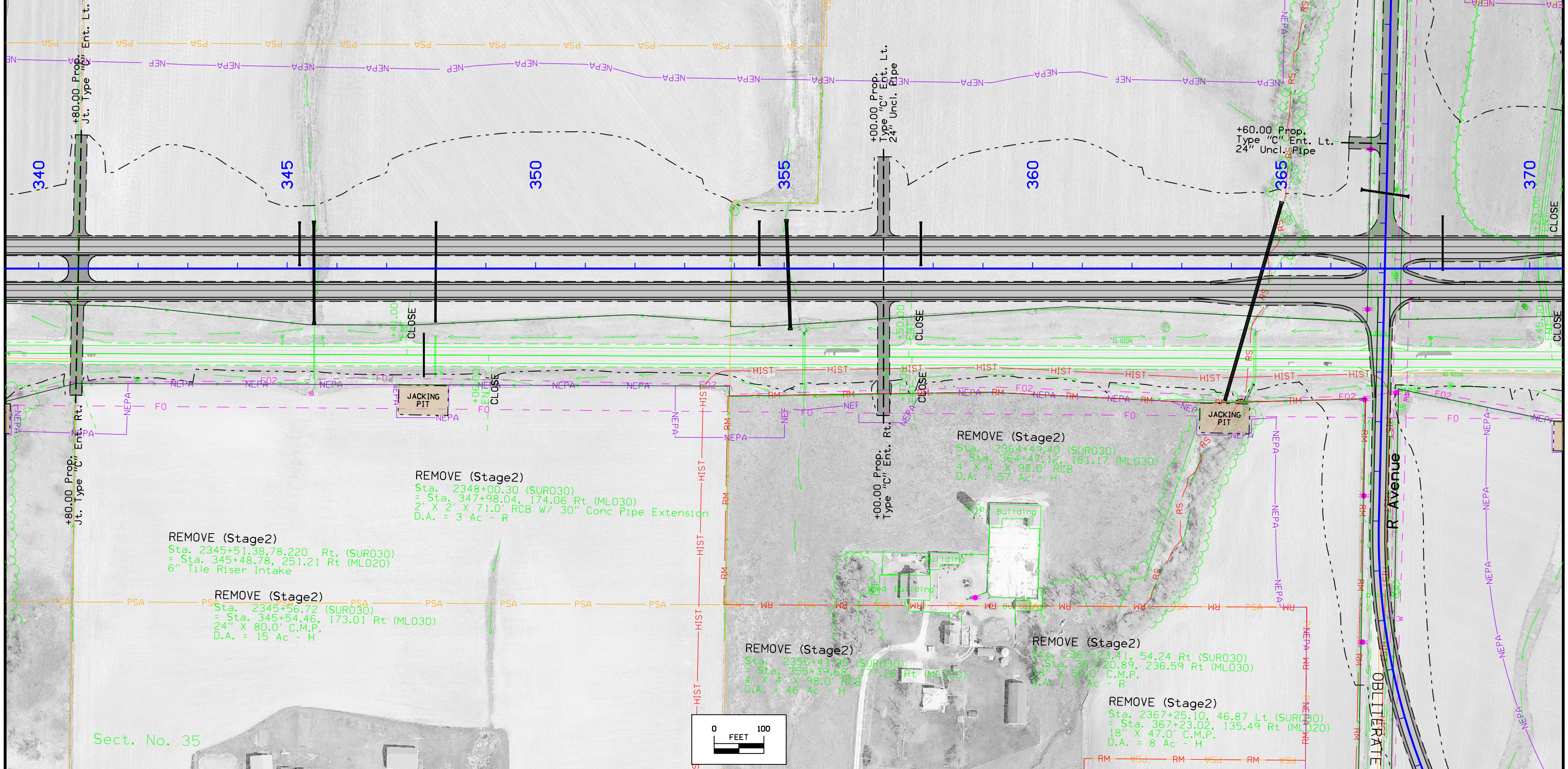


Sect. No. 26

UAC
Sta. 2367+42.51, 992.75 Lt (SUR030)
= Sta. 367+44.41, 810.31 Lt (ML030)
30" X 40.0' C.M.P.
D.A. = 9 Ac - H

UAC
15" X 21.0' PLASTIC



REMOVE (Stage2)
Sta. 2348+00.30 (SUR030)
= Sta. 347+98.04, 174.06 Rt (ML030)
2' X 2' X 71.0' RCB W/ 30" Conc Pipe Extension
D.A. = 3 Ac - R

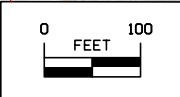
REMOVE (Stage2)
Sta. 2345+51.38, 78.220 Rt (SUR030)
= Sta. 345+48.78, 251.21 Rt (ML020)
6" Tile Riser Intake

REMOVE (Stage2)
Sta. 2345+56.72 (SUR030)
= Sta. 345+54.46, 173.01 Rt (ML030)
24" X 80.0' C.M.P.
D.A. = 15 Ac - H

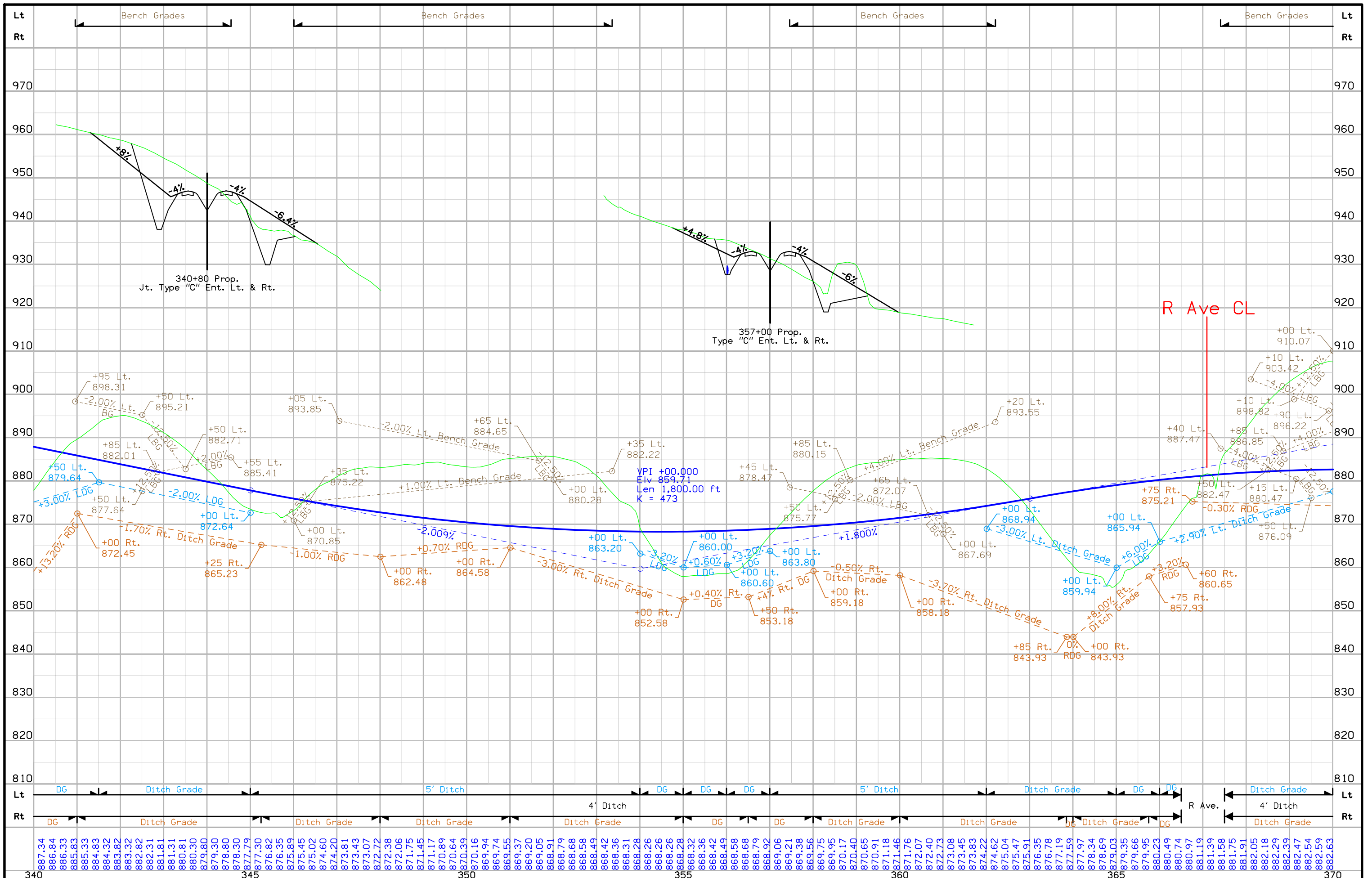
REMOVE (Stage2)
Sta. 2355+41.25 (SUR030)
= Sta. 355+39.68, 177.26 Rt (ML030)
4' X 4' X 98.0' RCB
D.A. = 46 Ac - H

REMOVE (Stage2)
Sta. 2367+23.41, 54.24 Rt (SUR030)
= Sta. 367+20.89, 236.59 Rt (ML030)
18" X 50.0' C.M.P.
D.A. = 1 Ac - R

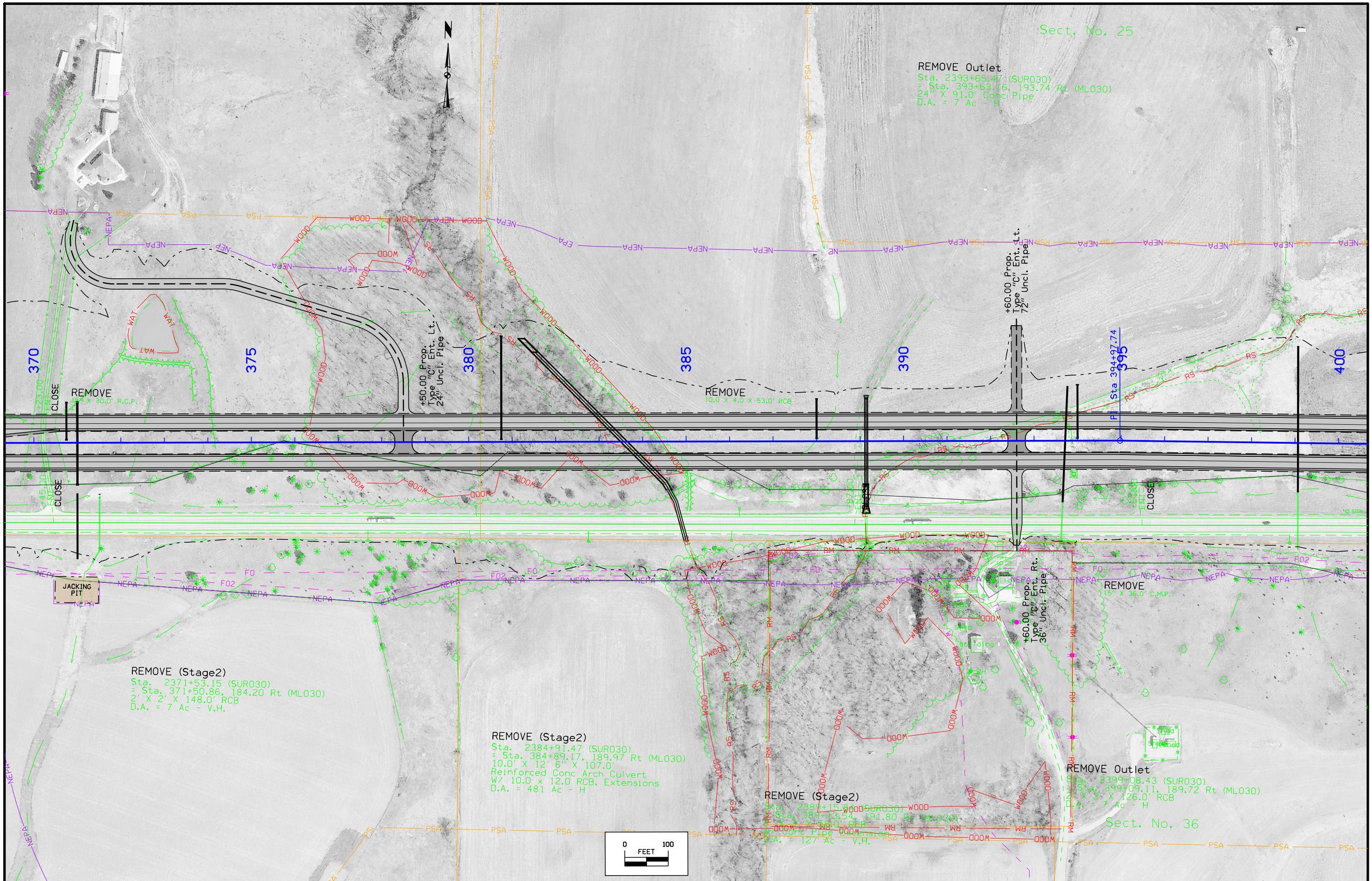
REMOVE (Stage2)
Sta. 2367+25.10, 46.87 Lt (SUR030)
= Sta. 367+23.02, 135.49 Rt (ML020)
18" X 47.0' C.M.P.
D.A. = 8 Ac - H



Sect. No. 35



REMOVE Outlet
Sta. 2393+65.47 (SUR030)
= Sta. 393+63.16, 193.74 Rt (ML030)
24" X 91.0' Conc Pipe
D.A. = 7 Ac - H

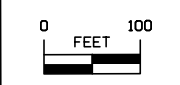


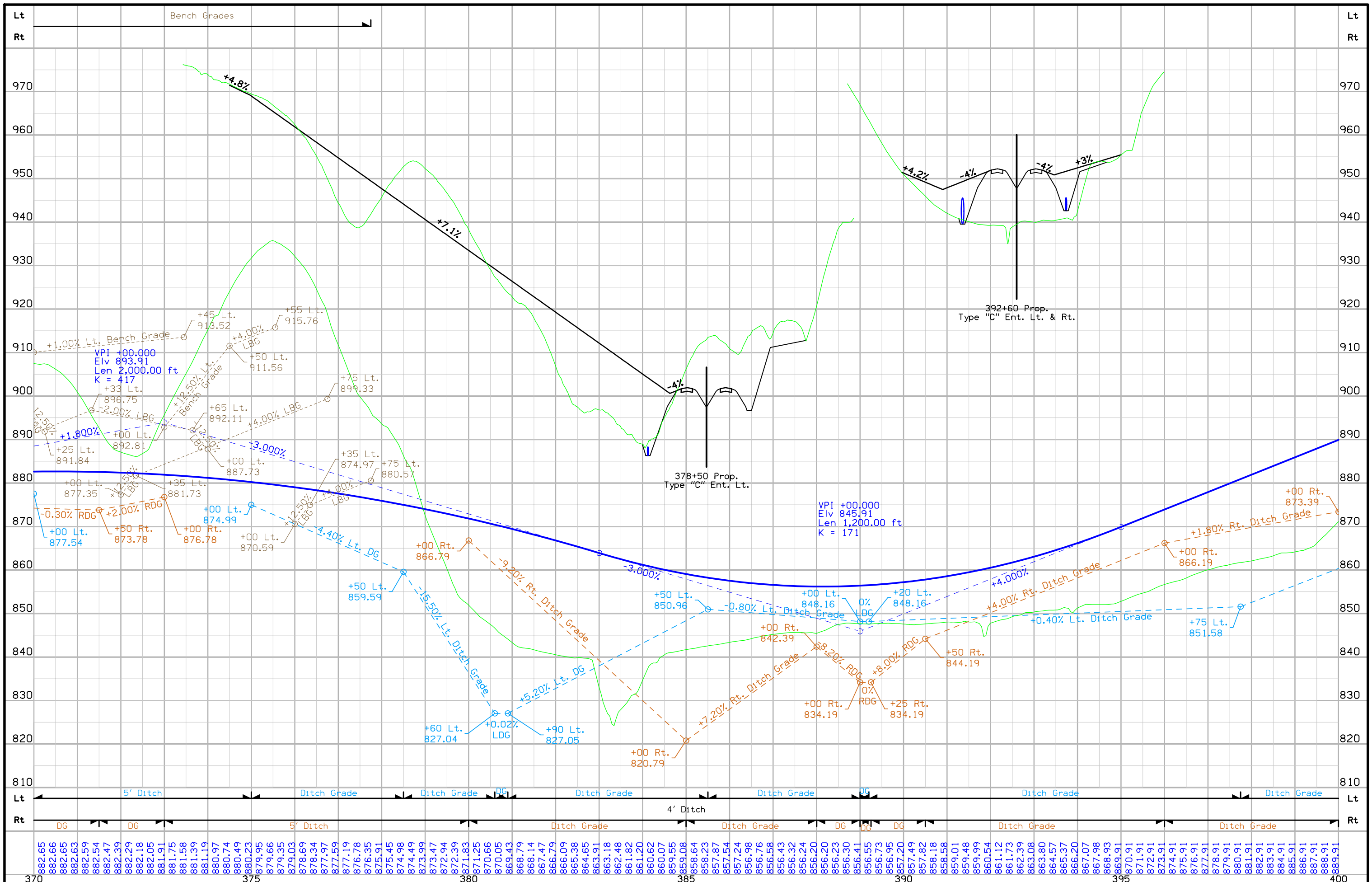
REMOVE (Stage2)
Sta. 2371+53.15 (SUR030)
= Sta. 371+50.86, 184.20 Rt (ML030)
2' X 2' X 148.0' RCB
D.A. = 7 Ac - V.H.

REMOVE (Stage2)
Sta. 2384+91.47 (SUR030)
= Sta. 384+89.17, 189.97 Rt (ML030)
10.0' X 12' 6" X 107.0'
Reinforced Conc Arch Culvert
W/ 10.0 x 12.0 RCB. Extensions
D.A. = 481 Ac - H

REMOVE (Stage2)
Sta. 2389+15.80 (SUR030)
= Sta. 389+13.54, 191.80 Rt (ML030)
10.0' X 12' 6" X 107.0'
Reinforced Conc Arch Culvert
W/ 10.0 x 12.0 RCB. Extensions
D.A. = 127 Ac - V.H.

REMOVE Outlet
Sta. 2399+08.43 (SUR030)
= Sta. 399+09.11, 189.72 Rt (ML030)
15' X 2' X 126.0' RCB
D.A. = 7 Ac - H





FILE NO.	ENGLISH	DESIGN TEAM	TAMA COUNTY	PROJECT NUMBER	SHEET NUMBER
		Flattery\Johnson		NHSX-030-6(187)--3H-86	D.21