

SURVEY SYMBOLS

- DIK Centerline of Dike or Dam
- ENU Edge Unpaved Entrance & Parking
- TEV Evergreen Tree
- TDC Tree Deciduous
- PPA Power Pole Co. 1
- SI Sign
- RR Centerline of Railroad Tracks
- RIP Rip-Rap
- RET Retaining Walls
- FCL Chain Link and Security Fence
- RRS Railroad Signal
- SHR Shrub
- FWD Wood Fence
- HDG Hedge Row
- GDG Guard Rail Steel
- BNK Stream Bank
- EW Edge of Water
- IN Storm Sewer Intake
- HT Electrical Highline Tower
- LUM Luminaire
- MH Utility Access (Manhole)
- FHD Fire Hydrants
- FLG Flag Poles
- IN Storm Sewer Intake
- OUT Tile Outlet
- TIL Tile Line
- INB Storm Sewer Beehive Intake
- MH Utility Access (Manhole)
- DU Centerline Draw or Stream (Up)
- D Centerline Draw or Stream (Down)
- ST1B Storm Sewer Co. 1 - Quality B
- TPD Telephone Pedestal
- PPA Power Pole Co. 1
- EB Electrical Box
- UV Underground Utility Vault
- WW Water Valve
- PR Electric Riser Pole
- LUM Luminaire
- GV Gas Valve
- E3 EL3D Electric Line Co. 3 - Quality D
- F02 FO2D Fiber Optic Co. 2 - Quality D
- G-HP GH1D High Pres Gas Co 1 - Quality D
- F03 FO3D Fiber Optic Co. 3 - Quality D
- F0 FO1D Fiber Optic Co. 1 - Quality D
- F04 FO4D Fiber Optic Co. 4 - Quality D
- E1 EL1D Electric Line Co. 1 - Quality D

UTILITY LEGEND

- San.(B) SA1B Sanitary Sewer Co. 1- Quality B
- E2(B) EL2B Electric Line Co. 2 - Quality B
- E2 EL2D Electric Line Co. 2 - Quality D
- F05 FO5D Fiber Optic Co. 5 - Quality D
- G2 GL2D Gas Line Co. 2 - Quality D
- F06(B) Fiber Optic Co. 6
- F07(B) Fiber Optic Co. 7
- San.(B) City of Hinton- Quality B
- St.S. PPA Midamerican Energy
- F0(B) Neutral Path
- F02(B) MCI
- F03(B) Fiber Comm
- F04(B) Premier Comm
- F05(B) Century Link
- F06(B) Long Lines
- F07(B) Winstream Communication
- E(B) City of Hinton
- E2(B) Midamerican Energy
- E3(B) Northwest REC
- G2(B) NUSTAR
- G3HP(B) Midamerican Energy
- T(B) Cable One
- TV(B) Century Link
- W(B) City of Hinton

PLAN VIEW COLOR LEGEND OF PLAN AND PROFILE SHEETS

LINEWORK	Design Color No.	
Green	(2)	Existing Topographic Features and Labels
Blue	(1)	Proposed Alignment, Stationing, Tic Marks, and Alignment Annotation
Magenta	(5)	Existing Utilities
SHADING		
	Design Color No.	
Yellow	(4)	Highlight for Critical Notes or Features
Red	(3)	Delineates Restricted Areas
Lavender	(9)	Temporary Pavement Shading
Gray, Light	(48)	Proposed Pavement Shading
Gray, Med	(80)	Proposed Granular Shading
Gray, Dark	(112)	Proposed Grade and Pave Shading "In conjunction with a paving project"
Brown, Light	(236)	Grading Shading
Tan	(8)	Proposed Sidewalk Shading
Blue, Light	(230)	Proposed Sidewalk Landing Shading
Pink	(11)	Proposed Sidewalk Ramp Shading

PROFILE VIEW COLOR LEGEND OF PLAN AND PROFILE SHEETS

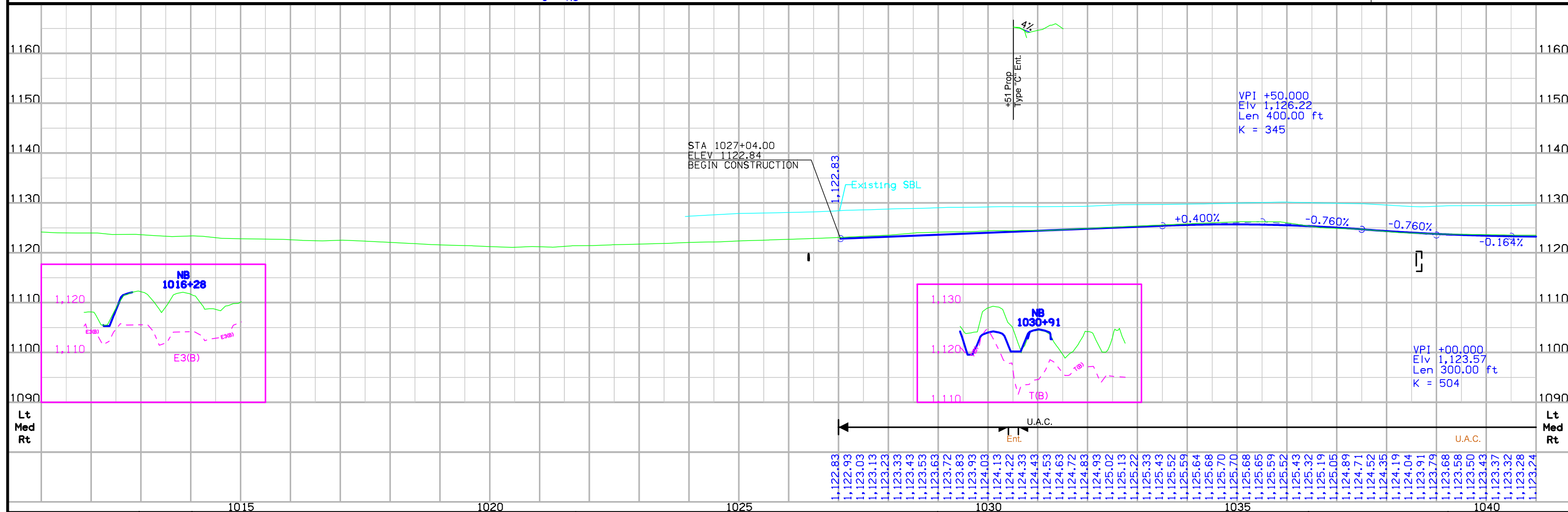
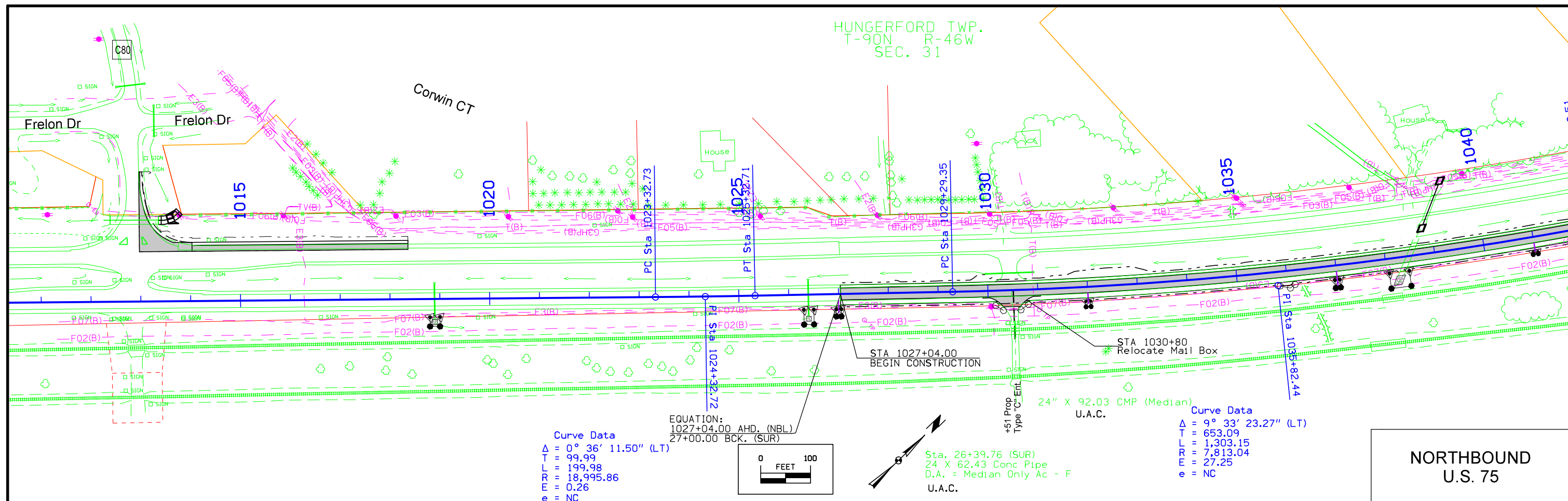
LINEWORK	Design Color No.	
Green	(2)	Existing Ground Line Profile
Blue	(1)	Proposed Profile and Annotation
Magenta	(5)	Existing Utilities
Blue, Light	(230)	Proposed Ditch Grades, Left
Black	(0)	Proposed Ditch Grades, Median
Rust	(14)	Proposed Ditch Grades, Right

- Reference Point
- Station
- Survey Line
- Section Corner
- Ground Line Intercept
- Saw Cut
- Guardrail
- Trench Drain
- HighTension Cable Guardrail
- Sheet Pile
- Pavement Removal
- Clearing & Grubbing Area

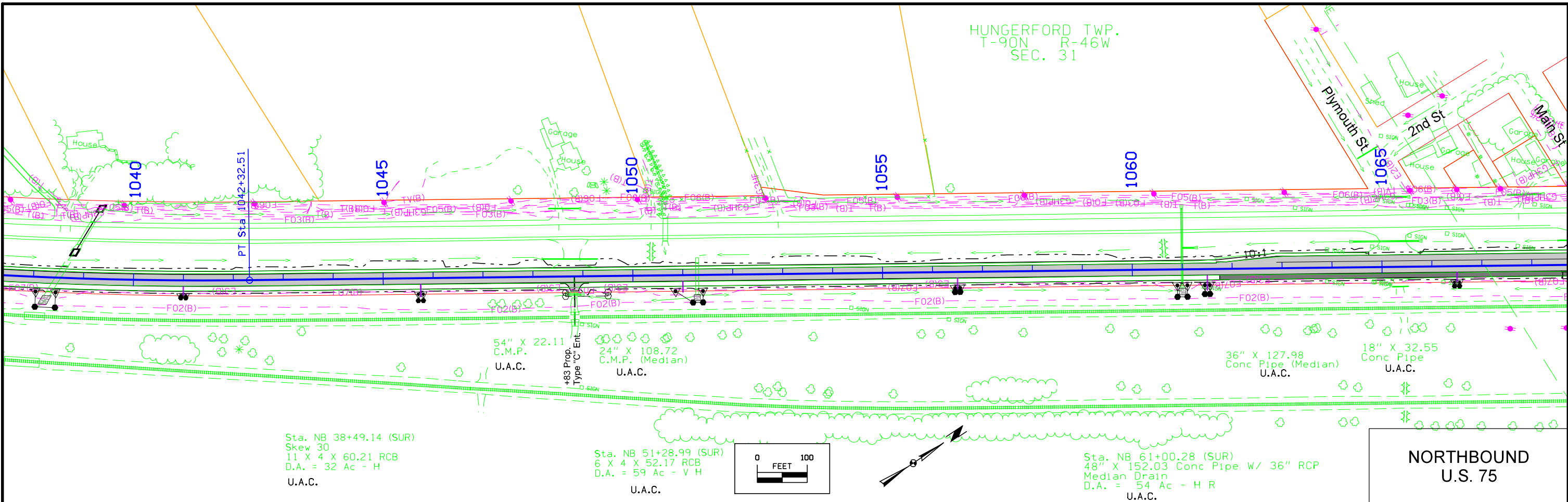
RIGHT-OF-WAY LEGEND

- Proposed Right-of-Way
- Existing Right of Way
- Existing and Proposed Right-of-Way
- Easement and Existing Right-of-Way
- Easement (Temporary)
- Easement
- C/A Access Control
- Property Line

**PLAN AND PROFILE
 LEGEND AND SYMBOL
 INFORMATION SHEET**
 (COVERS SHEET SERIES D, E, F, & K)



HUNGERFORD TWP.
T-90N R-46W
SEC. 31

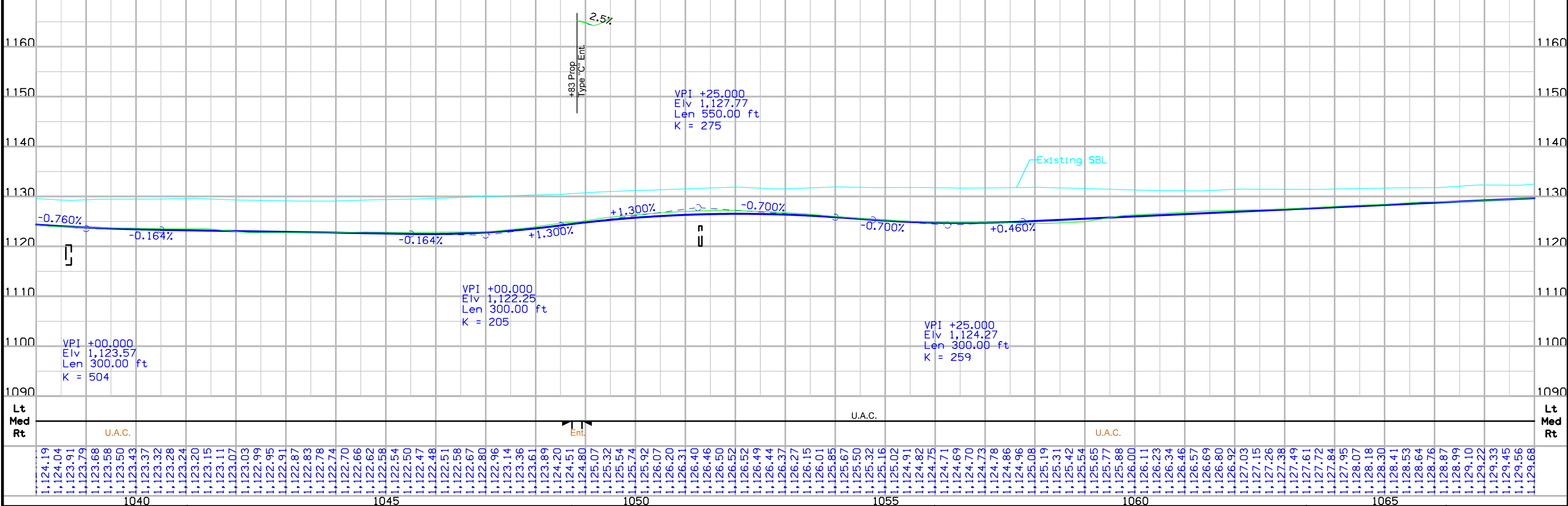


Sta. NB 38+49.14 (SUR)
Skew 30
11 X 4 X 60.21 RCB
D.A. = 32 Ac - H
U.A.C.

Sta. NB 51+28.99 (SUR)
6 X 4 X 52.17 RCB
D.A. = 59 Ac - V H
U.A.C.

Sta. NB 61+00.28 (SUR)
48" X 152.03 Conc Pipe W/ 36" RCP
Median Drain
D.A. = 54 Ac - H R
U.A.C.

**NORTHBOUND
U.S. 75**



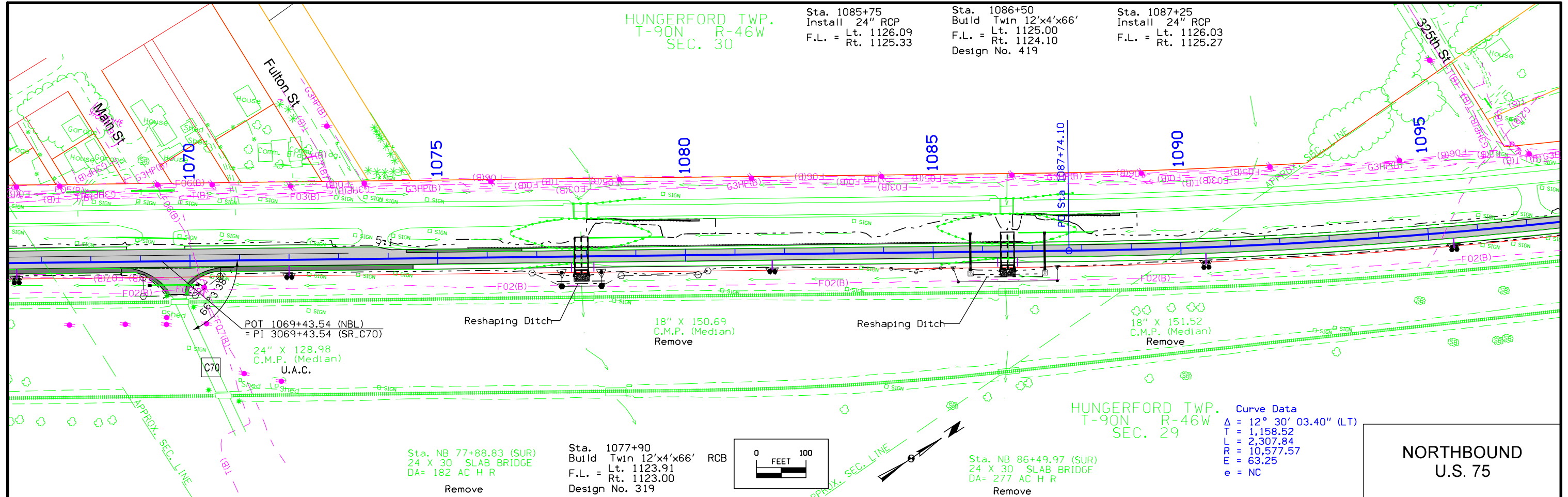
FILE NO.	ENGLISH	DESIGN TEAM	Holst \ Strum \ Janus	PLYMOUTH COUNTY	PROJECT NUMBER	NHSX-075-2(95)--3H-75	SHEET NUMBER	D.3
----------	---------	-------------	------------------------------	-----------------	----------------	------------------------------	--------------	------------

HUNGERFORD TWP.
T-90N R-46W
SEC. 30

Sta. 1085+75
Install 24" RCP
F.L. = Lt. 1126.09
Rt. 1125.33

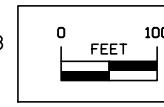
Sta. 1086+50
Build Twin 12'x4'x66'
F.L. = Lt. 1125.00
Rt. 1124.10
Design No. 419

Sta. 1087+25
Install 24" RCP
F.L. = Lt. 1126.03
Rt. 1125.27



Sta. NB 77+88.83 (SUR)
24 X 30 SLAB BRIDGE
DA= 182 AC H R
Remove

Sta. 1077+90
Build Twin 12'x4'x66' RCB
F.L. = Lt. 1123.91
Rt. 1123.00
Design No. 319

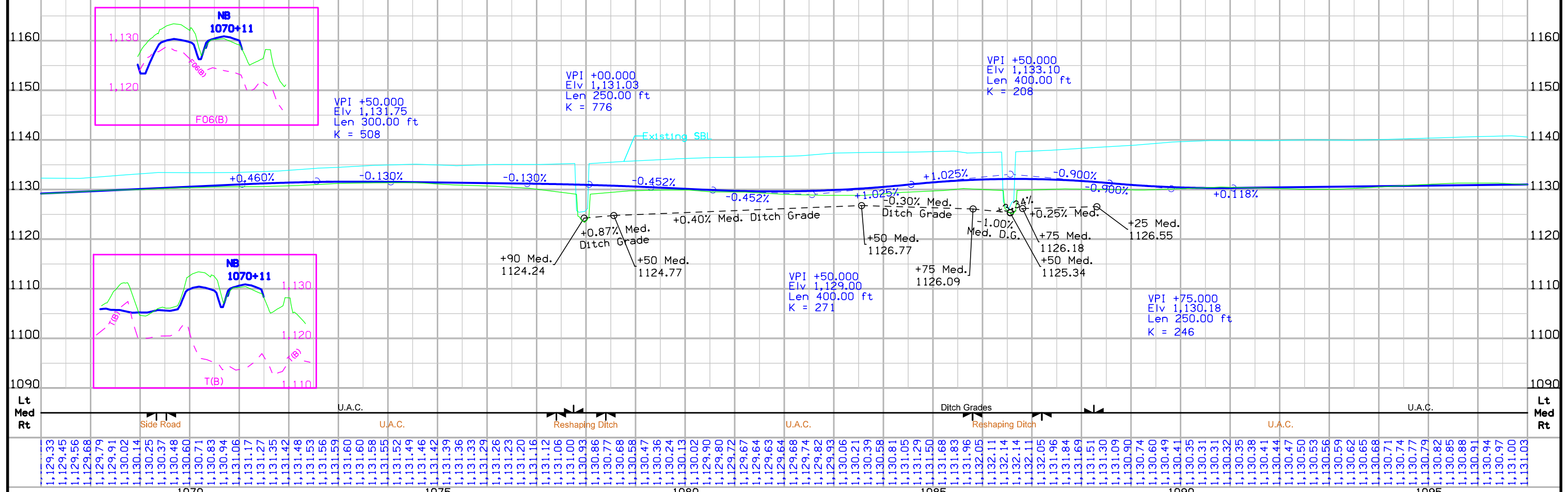


Sta. NB 86+49.97 (SUR)
24 X 30 SLAB BRIDGE
DA= 277 AC H R
Remove

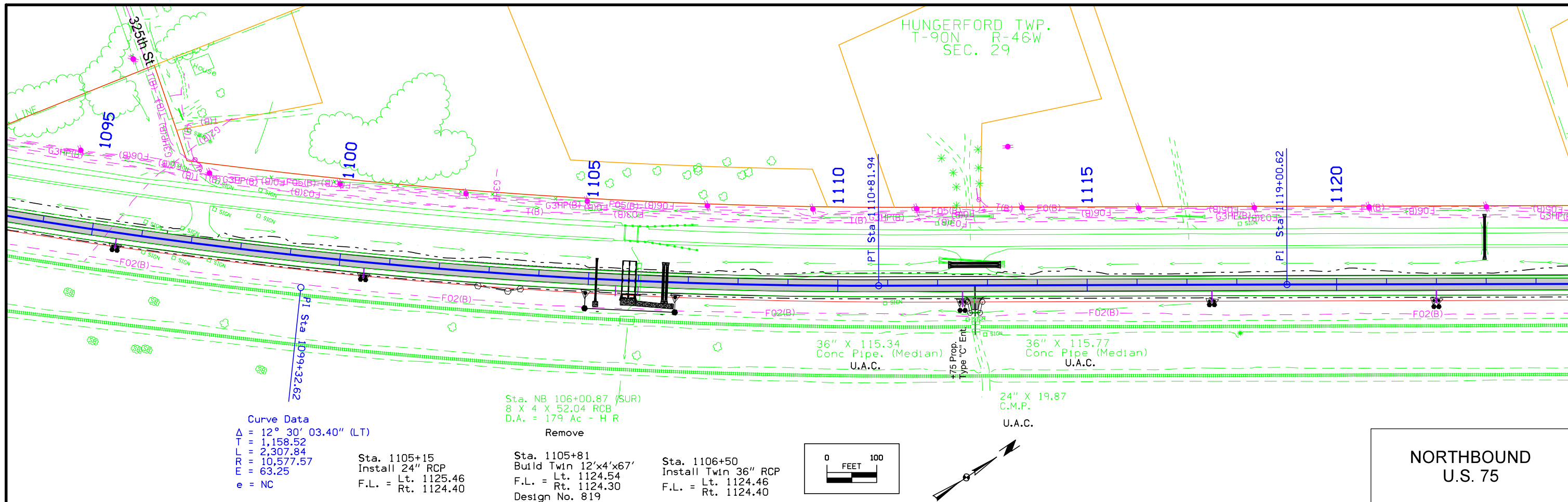
HUNGERFORD TWP.
T-90N R-46W
SEC. 29

Curve Data
Δ = 12° 30' 03.40" (LT)
T = 1,158.52
L = 2,307.84
R = 10,577.57
E = 63.25
e = NC

NORTHBOUND
U.S. 75



FILE NO.	ENGLISH	DESIGN TEAM	Holst \ Strum \ Janus	PLYMOUTH COUNTY	PROJECT NUMBER	NHSX-075-2(95)--3H-75	SHEET NUMBER	D.4
----------	---------	-------------	-----------------------	-----------------	----------------	-----------------------	--------------	-----



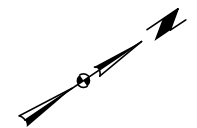
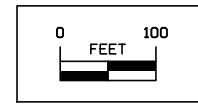
Curve Data
 $\Delta = 12^\circ 30' 03.40''$ (LT)
 $T = 1,158.52$
 $L = 2,307.84$
 $R = 10,577.57$
 $E = 63.25$
 $e = NC$

Sta. 1105+15
 Install 24" RCP
 F.L. = Lt. 1125.46
 Rt. 1124.40

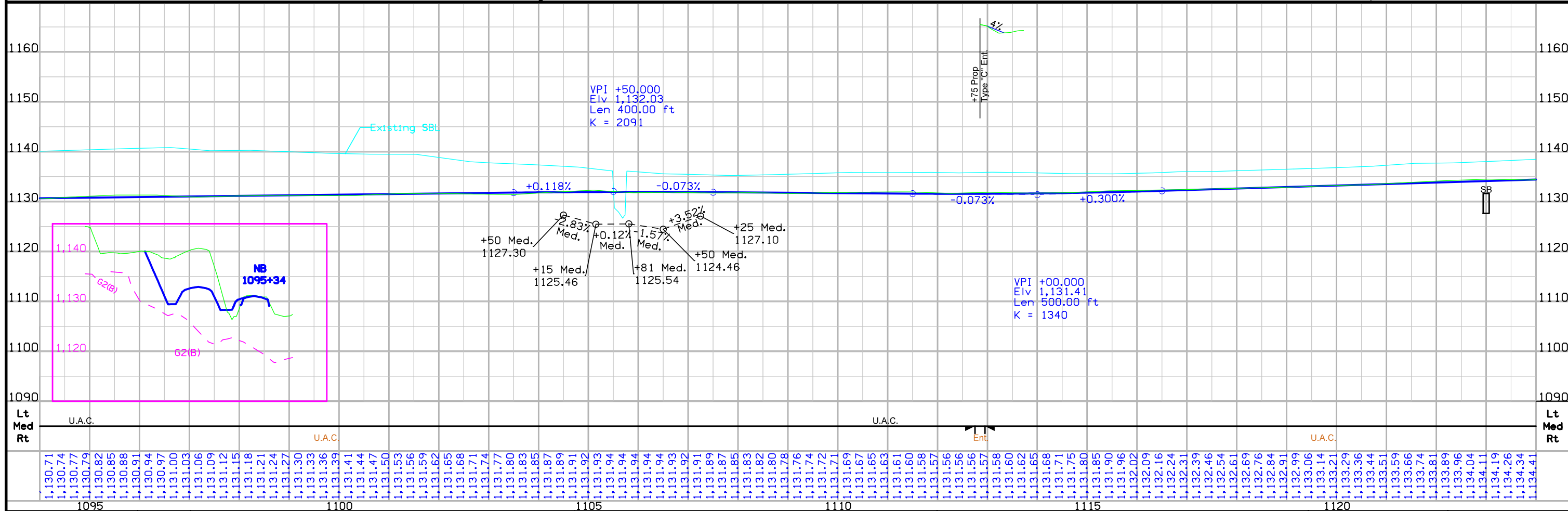
Sta. NB 106+00.87 (SUR)
 8 X 4 X 52.04 RCB
 D.A. = 179 Ac - H R

Remove
 Sta. 1105+81
 Build Twin 12"x4'x67"
 F.L. = Lt. 1124.54
 Rt. 1124.30
 Design No. 819

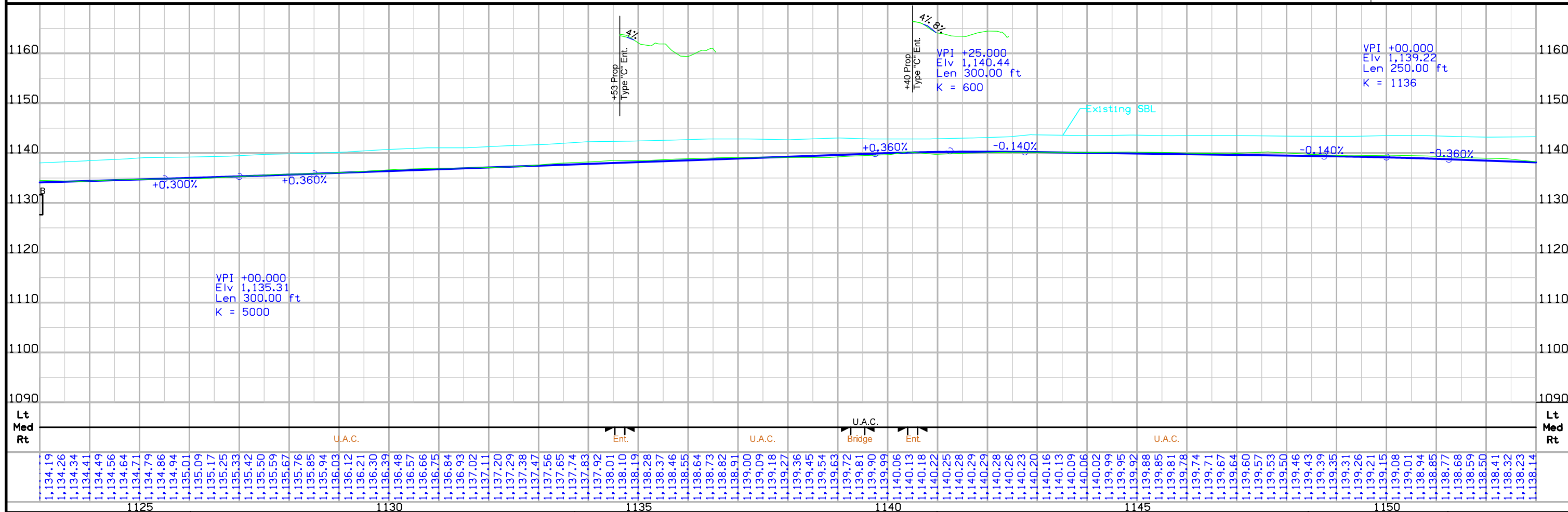
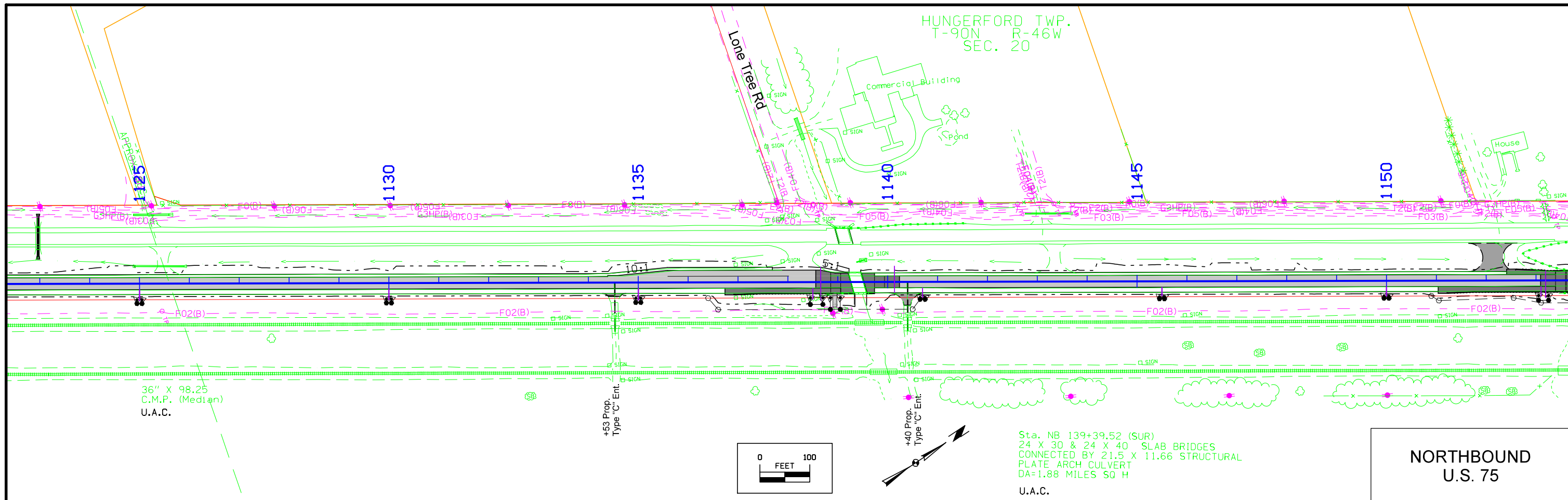
Sta. 1106+50
 Install Twin 36" RCP
 F.L. = Lt. 1124.46
 Rt. 1124.40



**NORTHBOUND
 U.S. 75**

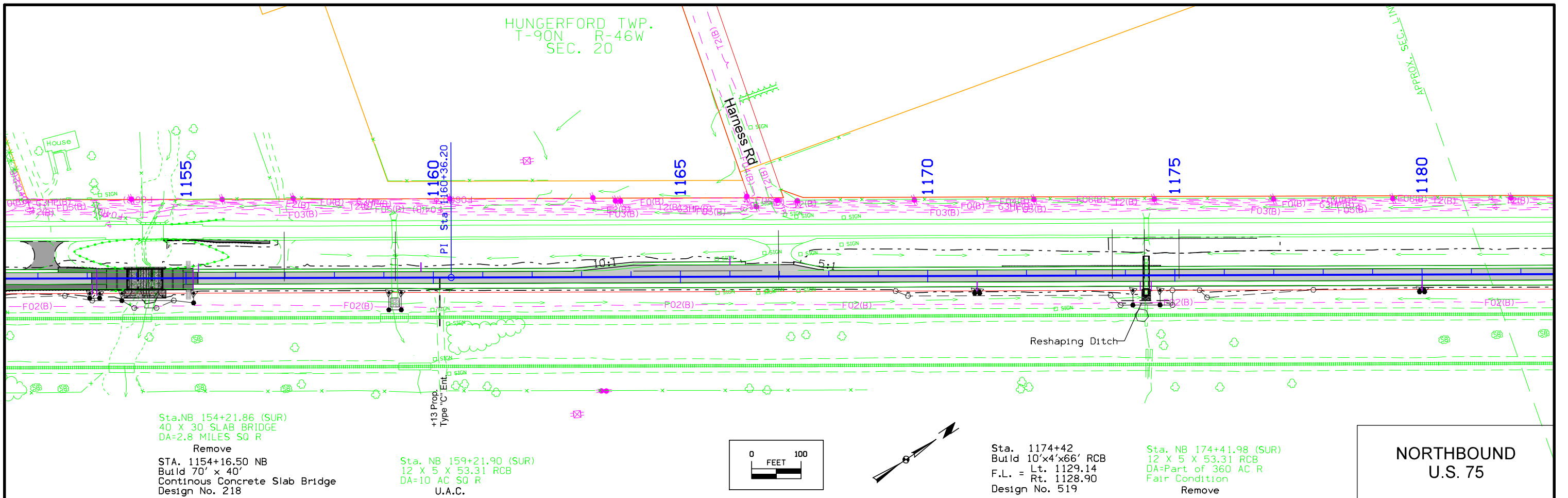


FILE NO.	ENGLISH	DESIGN TEAM	Holst \ Strum \ Janus	PLYMOUTH COUNTY	PROJECT NUMBER	NHSX-075-2(95)--3H-75	SHEET NUMBER	D.5
----------	---------	-------------	-----------------------	-----------------	----------------	-----------------------	--------------	-----



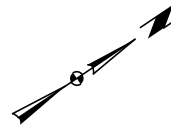
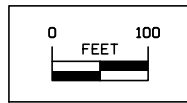
FILE NO.	ENGLISH	DESIGN TEAM	Holst \ Strum \ Janus	PLYMOUTH COUNTY	PROJECT NUMBER	NHSX-075-2(95)--3H-75	SHEET NUMBER	D.6
----------	---------	-------------	-----------------------	-----------------	----------------	-----------------------	--------------	-----

HUNGERFORD TWP.
T-90N R-46W
SEC. 20



Sta. NB 154+21.86 (SUR)
40 X 30 SLAB BRIDGE
DA=2.8 MILES SQ R
Remove
STA. 1154+16.50 NB
Build 70' x 40'
Continuous Concrete Slab Bridge
Design No. 218

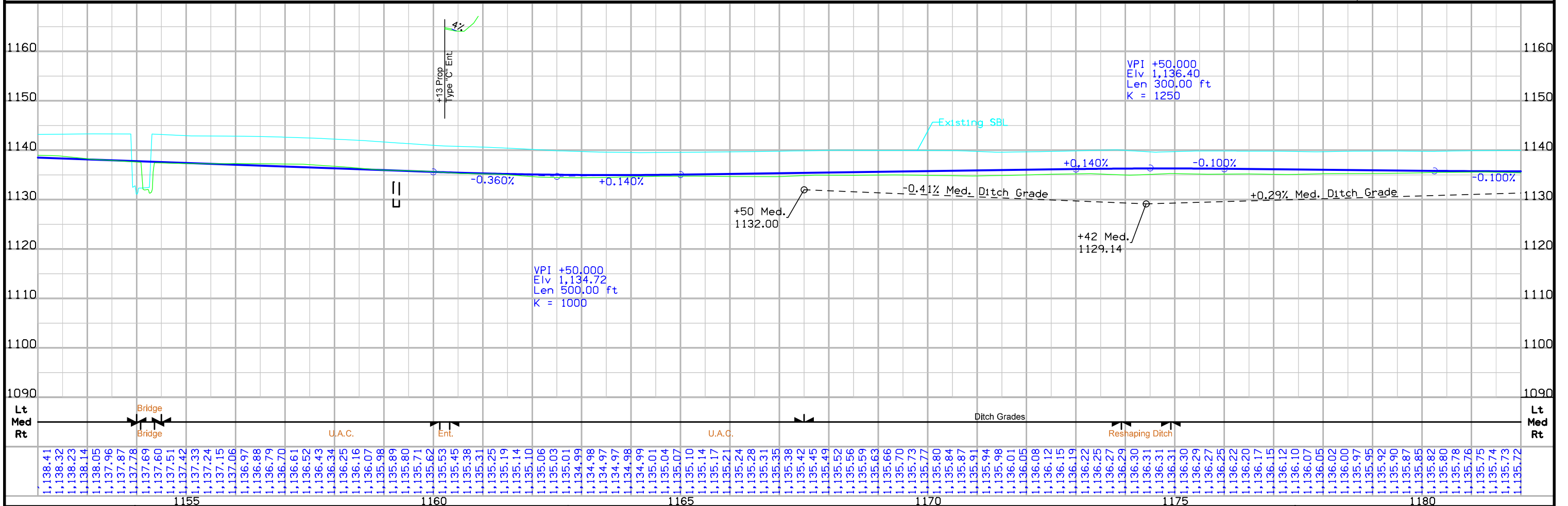
Sta. NB 159+21.90 (SUR)
12 X 5 X 53.31 RCB
DA=10 AC SQ R
U.A.C.



Sta. 1174+42
Build 10'x4'x66' RCB
F.L. = Lt. 1129.14
Rt. 1128.90
Design No. 519

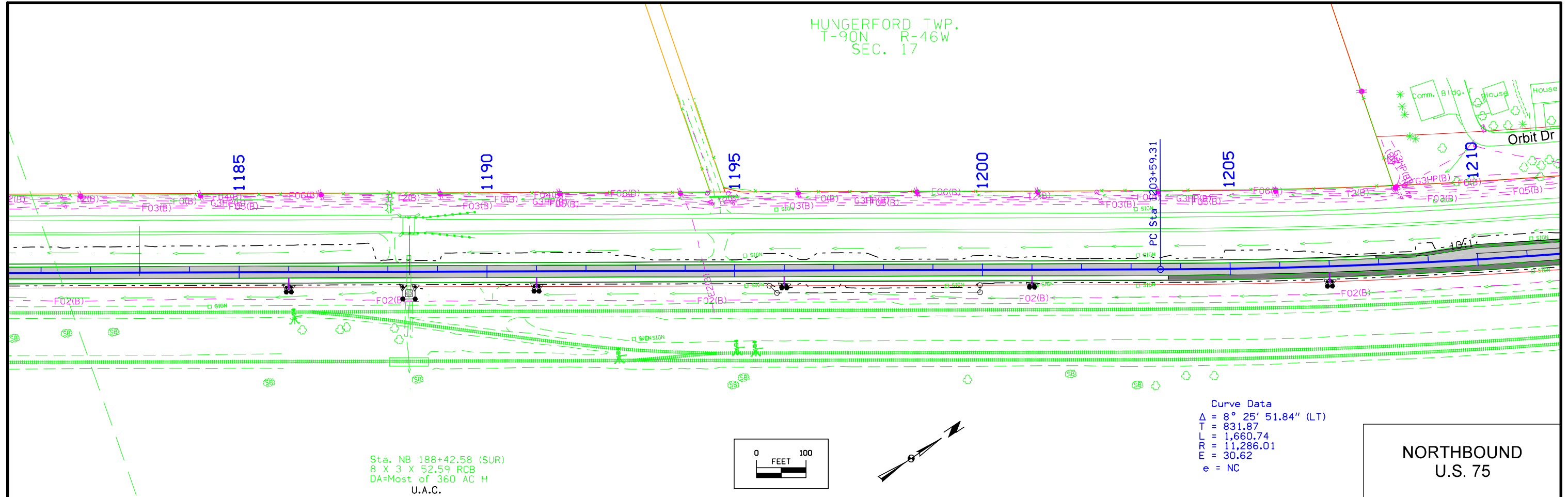
Sta. NB 174+41.98 (SUR)
12 X 5 X 53.31 RCB
DA=Part of 360 AC R
Fair Condition
Remove

**NORTHBOUND
U.S. 75**



FILE NO.	ENGLISH	DESIGN TEAM	PLYMOUTH COUNTY	PROJECT NUMBER	SHEET NUMBER
		Holst \ Strum \ Janus		NHSX-075-2(95)--3H-75	D.7

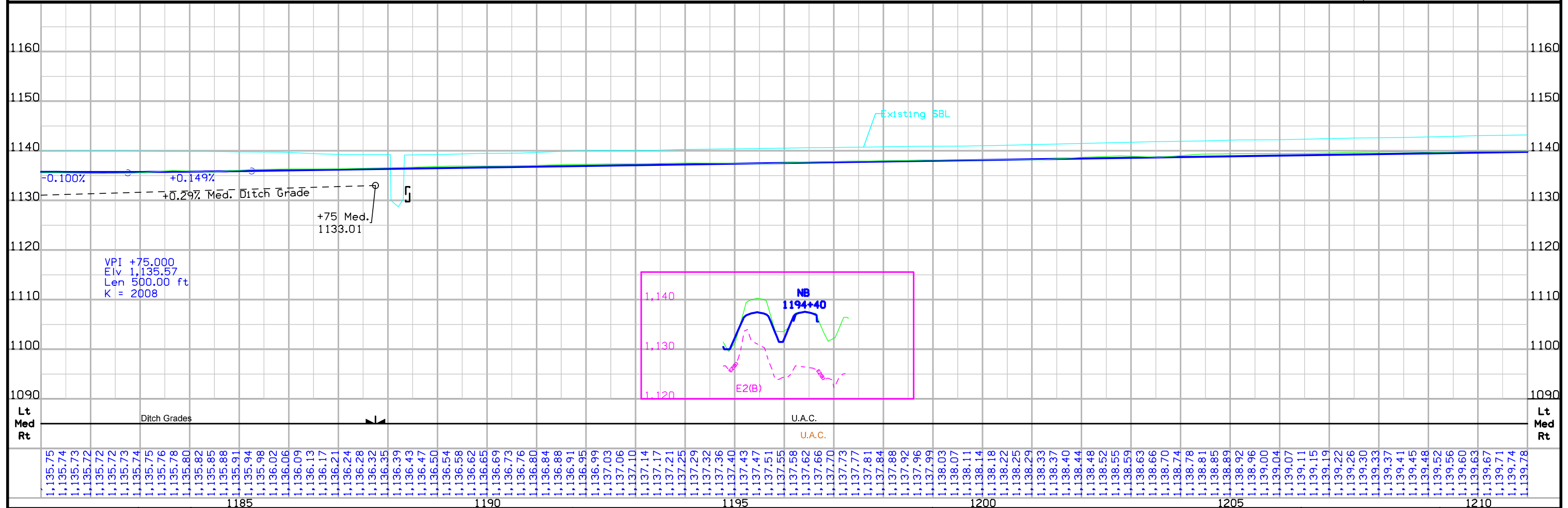
HUNGERFORD TWP.
T-90N R-46W
SEC. 17



Sta. NB 188+42.58 (SUR)
8 X 3 X 52.59 RCB
DA=Most of 360 AC H
U.A.C.

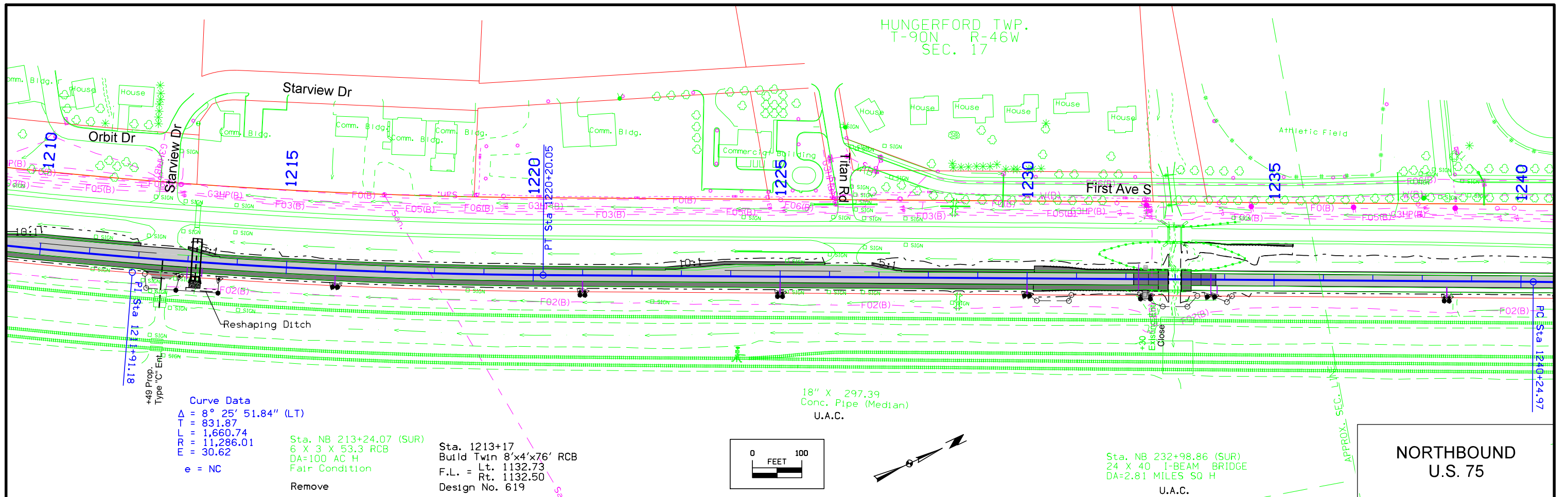
Curve Data
 $\Delta = 8^\circ 25' 51.84''$ (LT)
 $T = 831.87$
 $L = 1,660.74$
 $R = 11,286.01$
 $E = 30.62$
 $e = NC$

NORTHBOUND
U.S. 75



FILE NO.	ENGLISH	DESIGN TEAM	Holst \ Strum \ Janus	PLYMOUTH COUNTY	PROJECT NUMBER	NHSX-075-2(95)--3H-75	SHEET NUMBER	D.8
----------	---------	-------------	------------------------------	-----------------	----------------	------------------------------	--------------	------------

HUNGERFORD TWP.
T-90N R-46W
SEC. 17

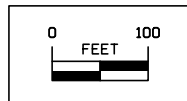


Curve Data
 $\Delta = 8^\circ 25' 51.84''$ (LT)
 $T = 831.87$
 $R = 1,660.74$
 $M = 11,286.01$
 $e = NC$

Sta. NB 213+24.07 (SUR)
 6 X 3 X 53.3 RCB
 DA=100 AC H
 Fair Condition
 Remove

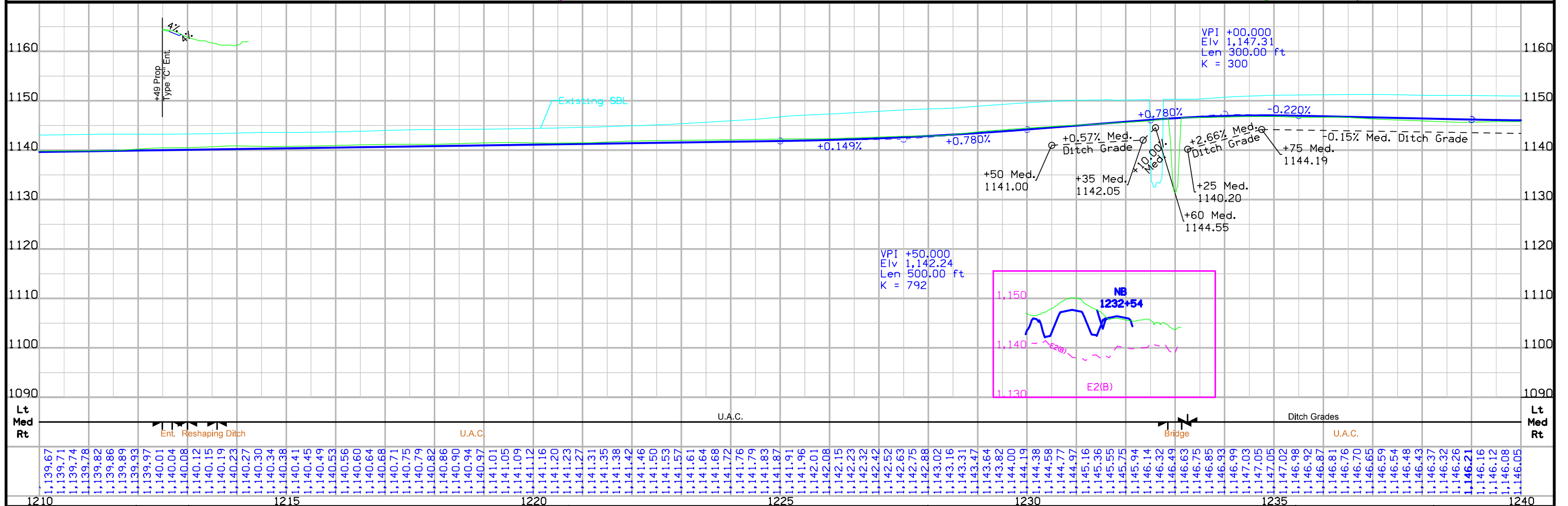
Sta. 1213+17
 Build Twin 8'x4'x76' RCB
 F.L. = Lt. 1132.73
 Rt. 1132.50
 Design No. 619

18" X 297.39
 Conc. Pipe (Median)
 U.A.C.



Sta. NB 232+98.86 (SUR)
 24 X 40 I-BEAM BRIDGE
 DA=2.81 MILES SQ H
 U.A.C.

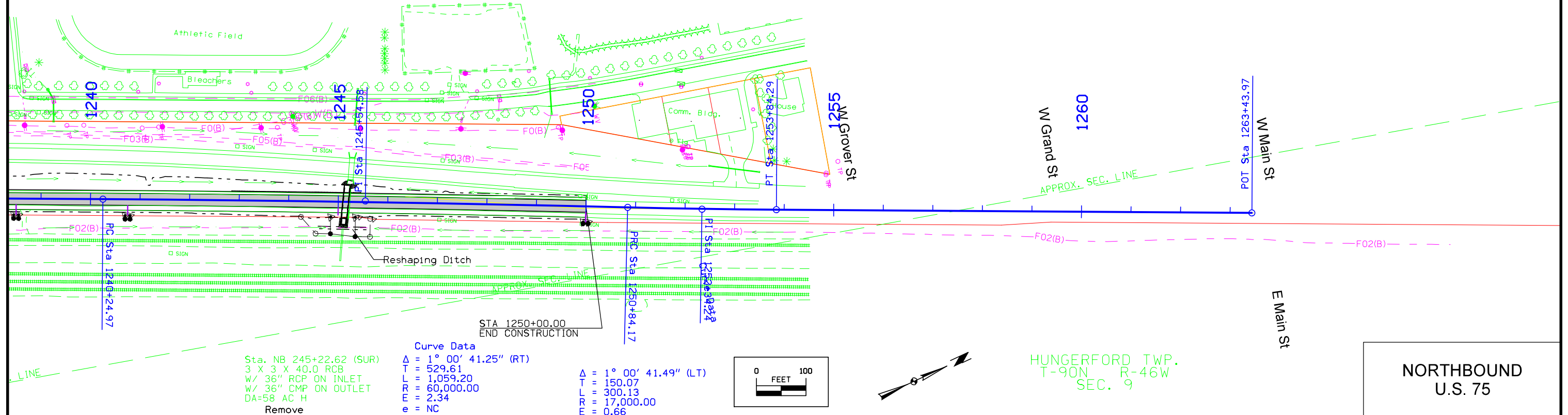
**NORTHBOUND
 U.S. 75**



FILE NO.	ENGLISH	DESIGN TEAM	Holst \ Strum \ Janus	PLYMOUTH COUNTY	PROJECT NUMBER	NHSX-075-2(95)--3H-75	SHEET NUMBER	D.9
----------	---------	-------------	-----------------------	-----------------	----------------	-----------------------	--------------	-----

Sta. 1245+15
 Build 10'x4'x66' RCB
 F.L. = Lt. 1137.98
 Rt. 1137.20
 Design No. 719

HUNGERFORD TWP.
 T-90N R-46W
 SEC. 8



Curve Data
 $\Delta = 1^\circ 00' 41.25''$ (RT)
 $T = 529.61$
 $L = 1,059.20$
 $R = 60,000.00$
 $E = 2.34$
 $e = NC$

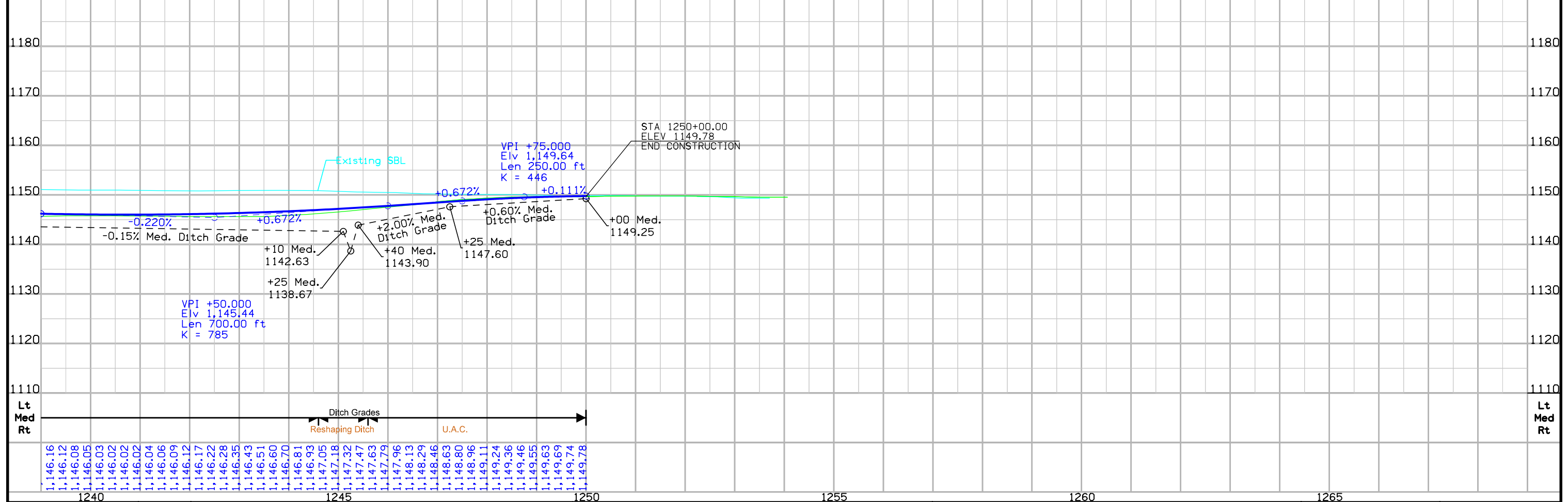
Sta. NB 245+22.62 (SUR)
 3' X 3' X 40.0 RCB
 W/ 36" RCP ON INLET
 W/ 36" CMP ON OUTLET
 DA=58 AC H

Remove

$\Delta = 1^\circ 00' 41.49''$ (LT)
 $T = 150.07$
 $L = 300.13$
 $R = 17,000.00$
 $e = 0.66$

HUNGERFORD TWP.
 T-90N R-46W
 SEC. 9

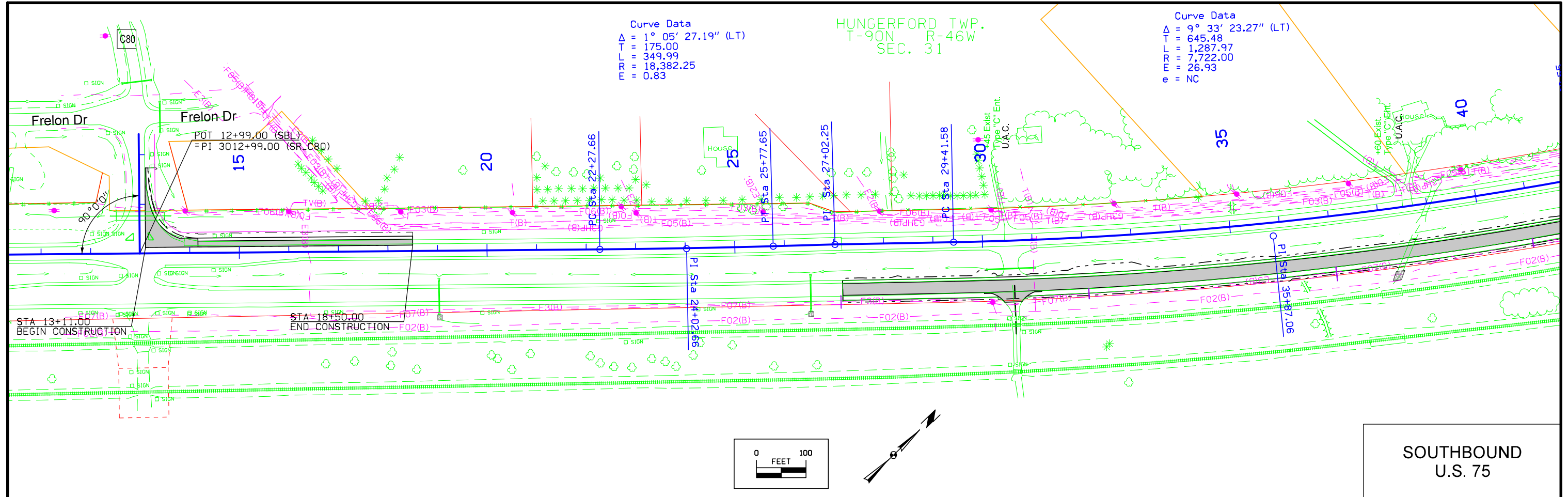
NORTHBOUND
 U.S. 75



Curve Data
 $\Delta = 1^\circ 05' 27.19''$ (LT)
 $T = 175.00$
 $L = 349.99$
 $R = 18,382.25$
 $e = 0.83$

HUNGERFORD TWP.
 T-90N R-46W
 SEC. 31

Curve Data
 $\Delta = 9^\circ 33' 23.27''$ (LT)
 $T = 645.48$
 $L = 1,287.97$
 $R = 7,722.00$
 $e = 26.93$
 $e = NC$



SOUTHBOUND
 U.S. 75

