

SURVEY SYMBOLS

- DIK Centerline of Dike or Dam
- ENU Edge Unpaved Entrance & Parking
- TEV Evergreen Tree
- TDC Tree Deciduous
- PPA Power Pole Co. 1
- SI Sign
- RR Centerline of Railroad Tracks
- RIP Rip-Rap
- RET Retaining Walls
- FCL Chain Link and Security Fence
- RRS Railroad Signal
- SHR Shrub
- FWD Wood Fence
- HDG Hedge Row
- GDG Guard Rail Steel
- BNK Stream Bank
- EW Edge of Water
- IN Storm Sewer Intake
- HT Electrical Highline Tower
- LUM Luminaire
- MH Utility Access (Manhole)
- FHD Fire Hydrants
- FLG Flag Poles
- IN Storm Sewer Intake
- OUT Tile Outlet
- TIL Tile Line
- INB Storm Sewer Beehive Intake
- MH Utility Access (Manhole)
- DU Centerline Draw or Stream (Up)
- D Centerline Draw or Stream (Down)
- ST1B Storm Sewer Co. 1 - Quality B
- TPD Telephone Pedestal
- PPA Power Pole Co. 1
- EB Electrical Box
- UV Underground Utility Vault
- WV Water Valve
- PR Electric Riser Pole
- LUM Luminaire
- GV Gas Valve
- E3 EL3D Electric Line Co. 3 - Quality D
- F02 FO2D Fiber Optic Co. 2 - Quality D
- G-HP GH1D High Pres Gas Co 1 - Quality D
- F03 FO3D Fiber Optic Co. 3 - Quality D
- F0 FO1D Fiber Optic Co. 1 - Quality D
- F04 FO4D Fiber Optic Co. 4 - Quality D
- E1 EL1D Electric Line Co. 1 - Quality D

UTILITY LEGEND

- San.(B) - City of Hinton- Quality B
- St.S. -
- PPA Midamerican Energy
- F0(B) - Nuetral Path
- F02(B) - MCI
- F03(B) - Fiber Comm
- F04(B) - Premier Comm
- F05(B) - Century Link
- F06(B) - Long Lines
- F07(B) - Winstream Communication
- E2(B) - Midamerican Energy
- E3(B) - Northwest REC
- G2(B) - NUSTAR
- G3HP(B) - Midamerican Energy
- T(B) - Cable One
- TV(B) - Century Link

PLAN VIEW COLOR LEGEND OF PLAN AND PROFILE SHEETS

LINEWORK	Design	Color No.	Description
Green	(2)		Existing Topographic Features and Labels
Blue	(1)		Proposed Alignment, Stationing, Tic Marks, and Alignment Annotation
Magenta	(5)		Existing Utilities
SHADING			
SHADING	Design	Color No.	Description
Yellow	(4)		Highlight for Critical Notes or Features
Red	(3)		Delineates Restricted Areas
Lavender	(9)		Temporary Pavement Shading
Gray, Light	(48)		Proposed Pavement Shading
Gray, Med	(80)		Proposed Granular Shading
Gray, Dark	(112)		Proposed Grade and Pave Shading "In conjunction with a paving project"
Brown, Light	(236)		Grading Shading
Tan	(8)		Proposed Sidewalk Shading
Blue, Light	(230)		Proposed Sidewalk Landing Shading
Pink	(11)		Proposed Sidewalk Ramp Shading

PROFILE VIEW COLOR LEGEND OF PLAN AND PROFILE SHEETS

LINEWORK	Design	Color No.	Description
Green	(2)		Existing Ground Line Profile
Blue	(1)		Proposed Profile and Annotation
Magenta	(5)		Existing Utilities
Blue, Light	(230)		Proposed Ditch Grades, Left
Black	(0)		Proposed Ditch Grades, Median
Rust	(14)		Proposed Ditch Grades, Right

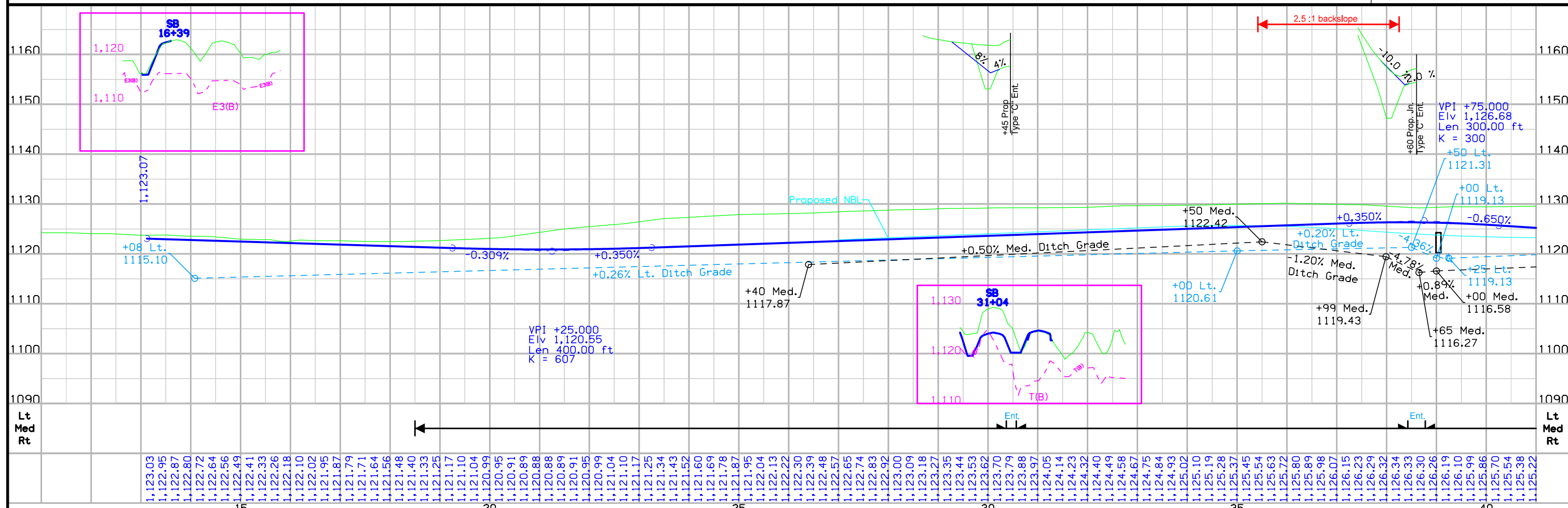
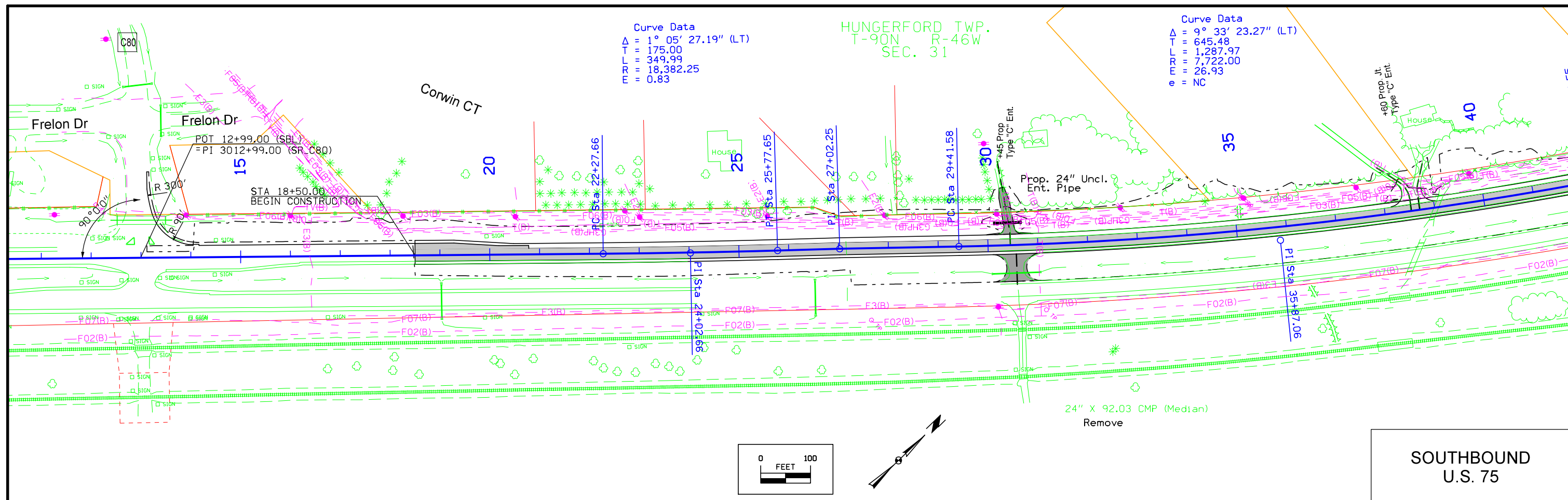
- Reference Point
- Station
- Survey Line
- Section Corner
- Ground Line Intercept
- Saw Cut
- Guardrail
- Trench Drain
- HighTension Cable Guardrail
- Sheet Pile
- Pavement Removal
- Clearing & Grubbing Area

RIGHT-OF-WAY LEGEND

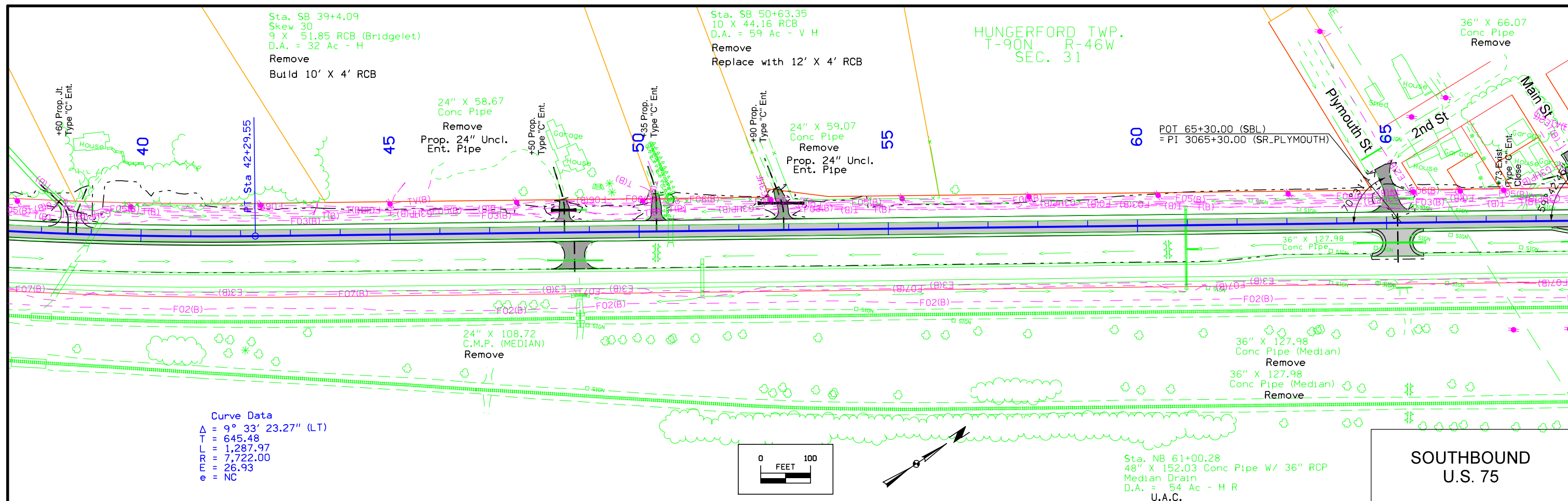
- Proposed Right-of-Way
- Existing Right of Way
- Existing and Proposed Right-of-Way
- Easement and Existing Right-of-Way
- Easement (Temporary)
- Easement
- Access Control
- Property Line

PLAN AND PROFILE LEGEND AND SYMBOL INFORMATION SHEET

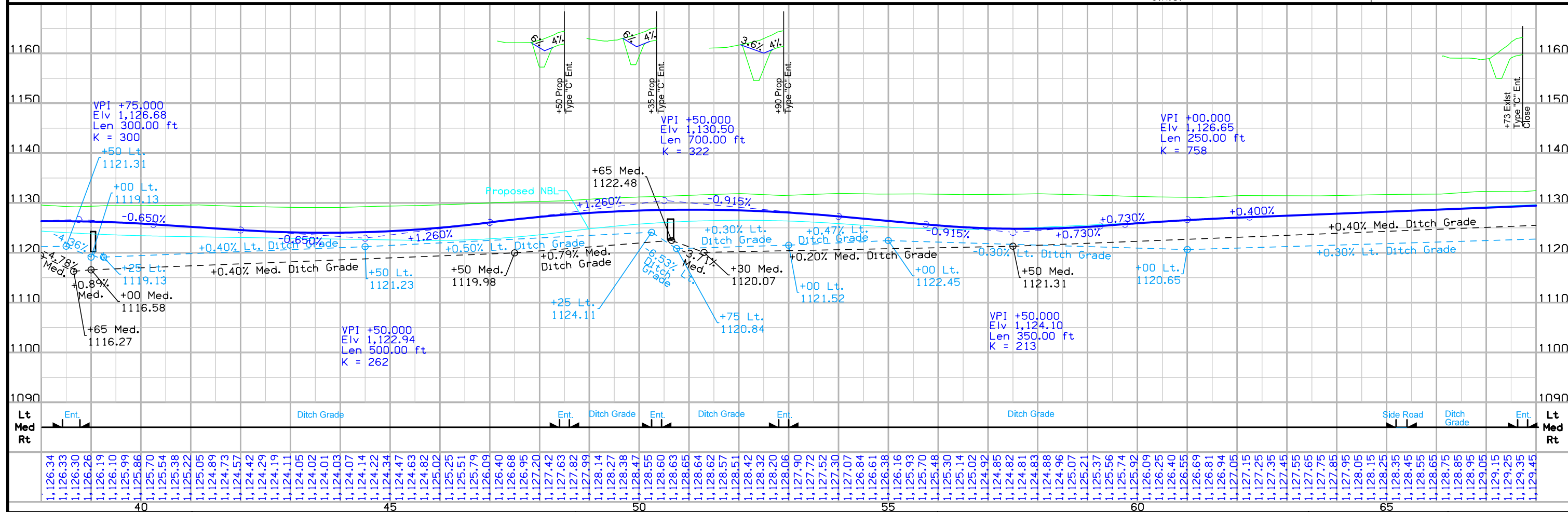
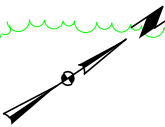
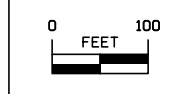
(COVERS SHEET SERIES D, E, F, & K)



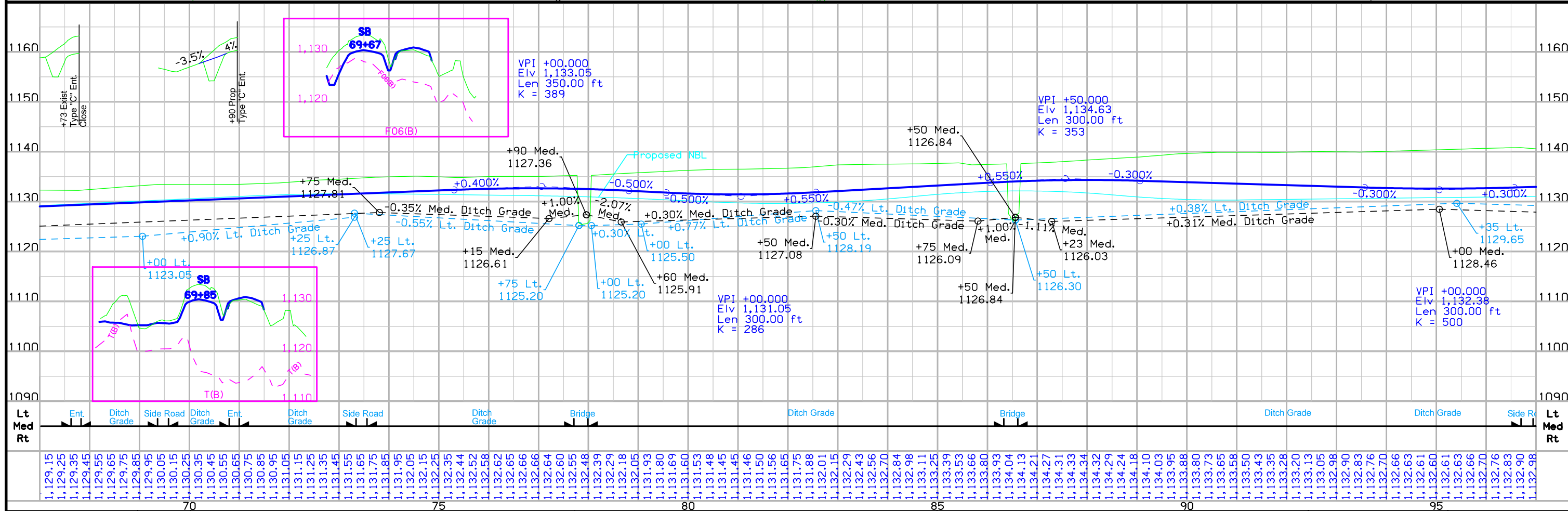
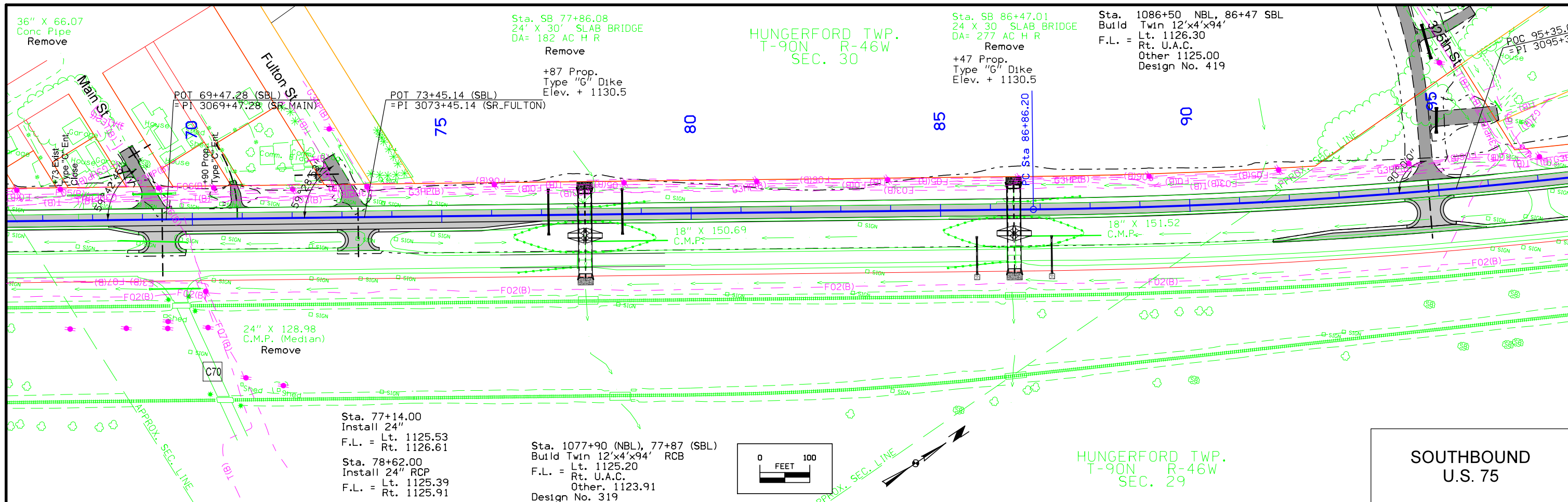
FILE NO.	ENGLISH	DESIGN TEAM	PLYMOUTH COUNTY	PROJECT NUMBER	SHEET NUMBER
		Holst \ Strum \ Janus		NHSX-075-2(96)--3H-75	D.2



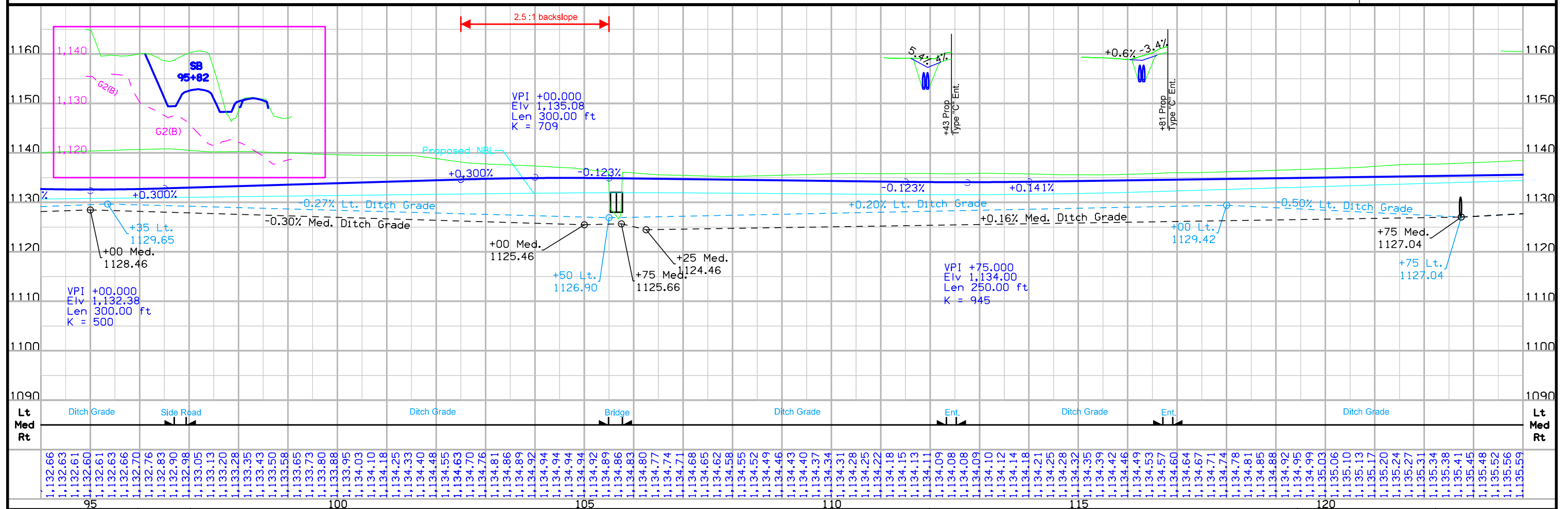
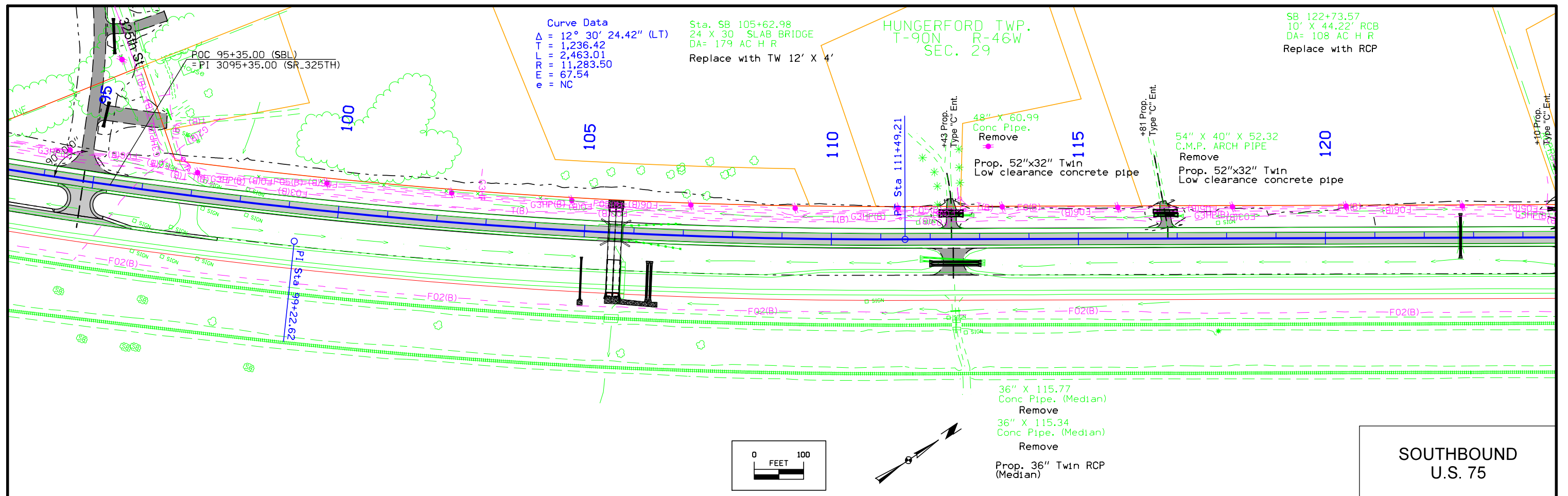
Curve Data
 $\Delta = 9^\circ 33' 23.27''$ (LT)
 $T = 645.48$
 $L = 1,287.97$
 $R = 7,722.00$
 $E = 26.93$
 $e = NC$



FILE NO.	ENGLISH	DESIGN TEAM	Holst \ Strum \ Janus	PLYMOUTH COUNTY	PROJECT NUMBER	NHSX-075-2(96)--3H-75	SHEET NUMBER	D.3
----------	---------	-------------	-----------------------	-----------------	----------------	-----------------------	--------------	-----



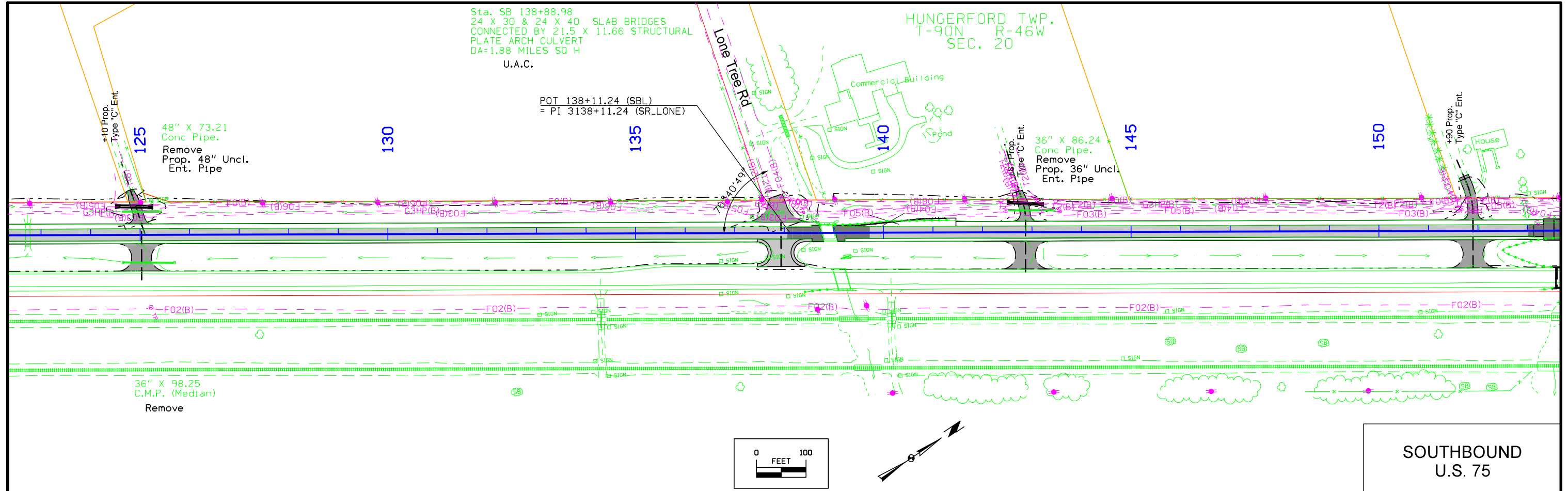
FILE NO.	ENGLISH	DESIGN TEAM	Holst \ Strum \ Janus	PLYMOUTH COUNTY	PROJECT NUMBER	NHSX-075-2(96)--3H-75	SHEET NUMBER	D.4
----------	---------	-------------	-----------------------	-----------------	----------------	-----------------------	--------------	-----



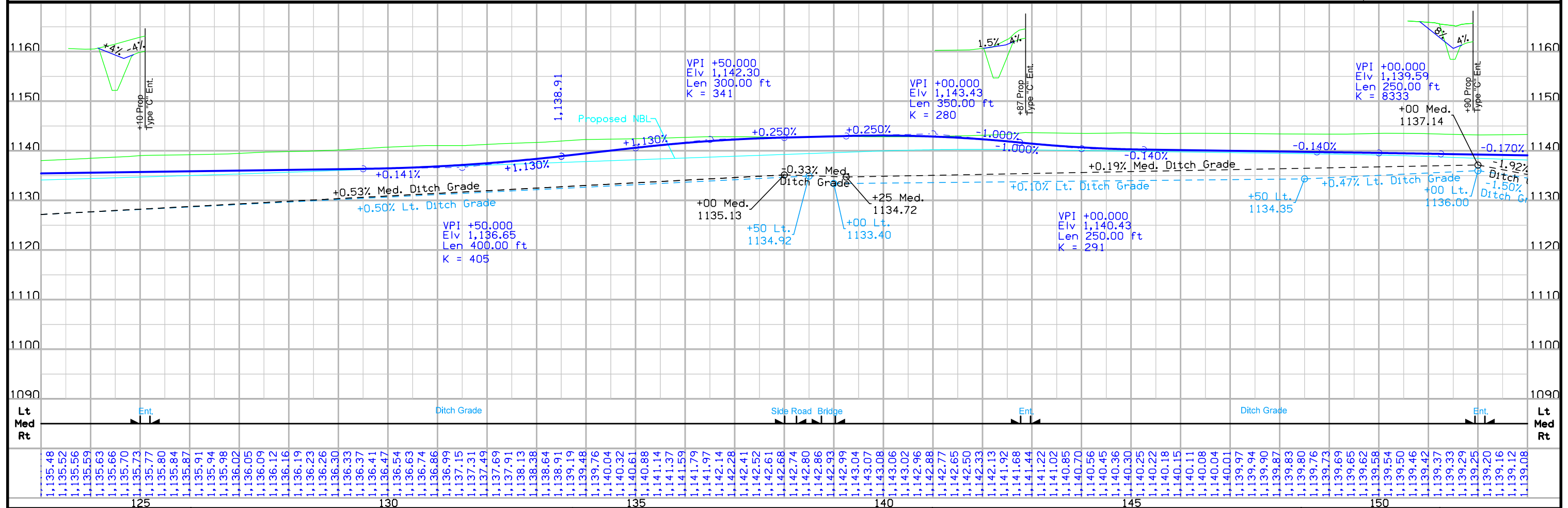
FILE NO.	ENGLISH	DESIGN TEAM	Holst \ Strum \ Janus	PLYMOUTH COUNTY	PROJECT NUMBER	NHSX-075-2(96)--3H-75	SHEET NUMBER	D.5
----------	---------	-------------	-----------------------	-----------------	----------------	-----------------------	--------------	-----

Sta. SB 138+88.98
 24 X 30 & 24 X 40 SLAB BRIDGES
 CONNECTED BY 21.5 X 11.66 STRUCTURAL
 PLATE ARCH CULVERT
 DA=1.88 MILES SQ H
 U.A.C.

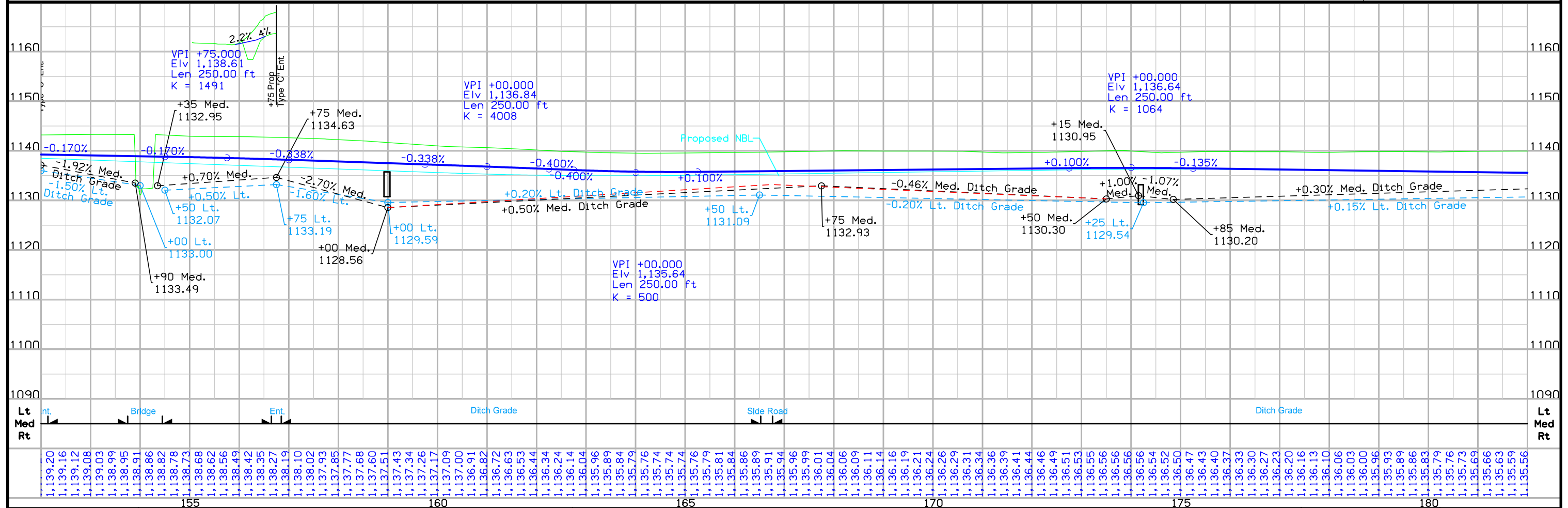
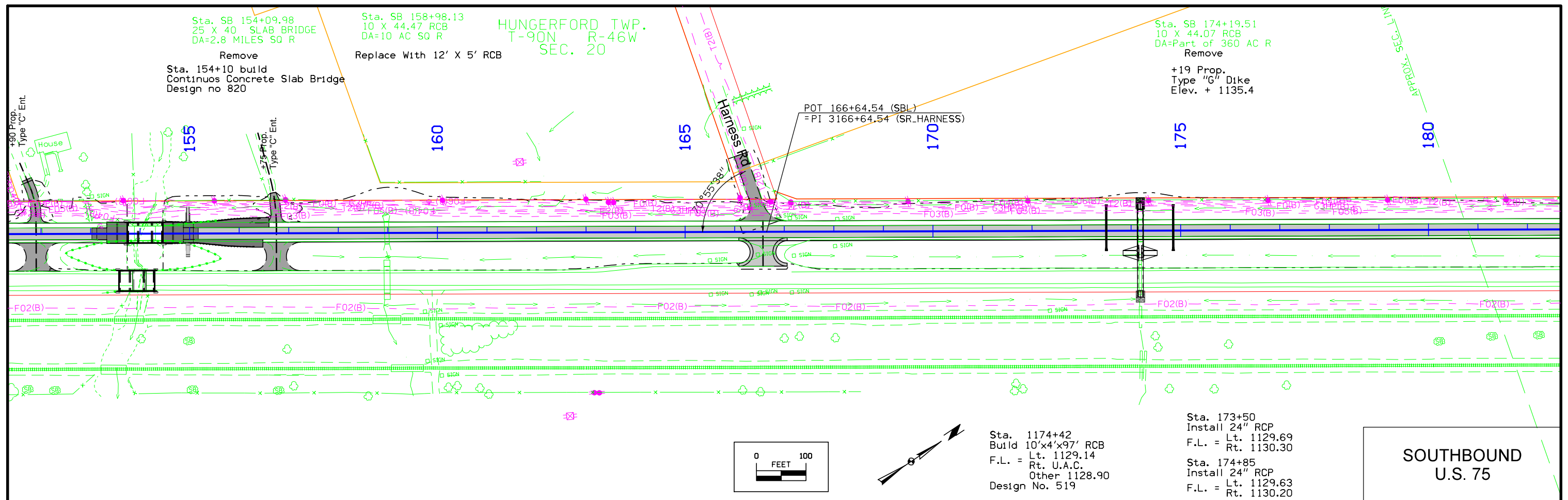
HUNGERFORD TWP.
 T-90N R-46W
 SEC. 20



**SOUTHBOUND
 U.S. 75**



FILE NO.	ENGLISH	DESIGN TEAM	PLYMOUTH COUNTY	PROJECT NUMBER	SHEET NUMBER
		Holst \ Strum \ Janus		NHSX-075-2(96)--3H-75	D.6



FILE NO.	ENGLISH	DESIGN TEAM	Holst \ Strum \ Janus	PLYMOUTH COUNTY	PROJECT NUMBER	NHSX-075-2(96)--3H-75	SHEET NUMBER	D.7
----------	---------	-------------	-----------------------	-----------------	----------------	-----------------------	--------------	-----

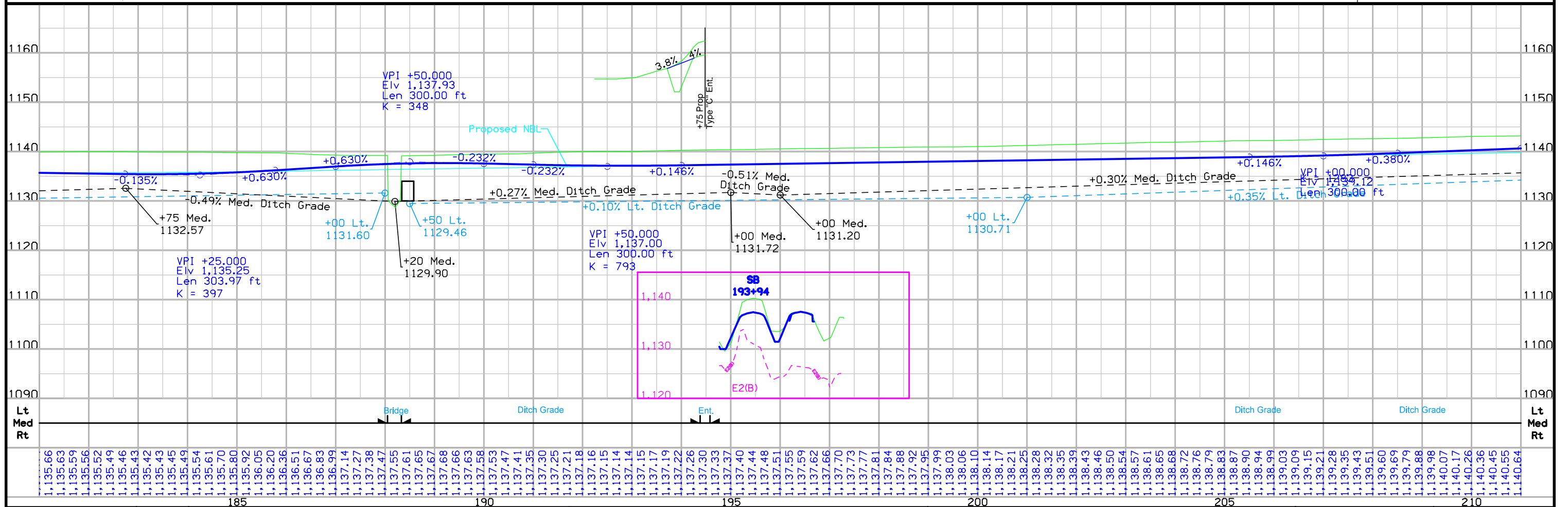
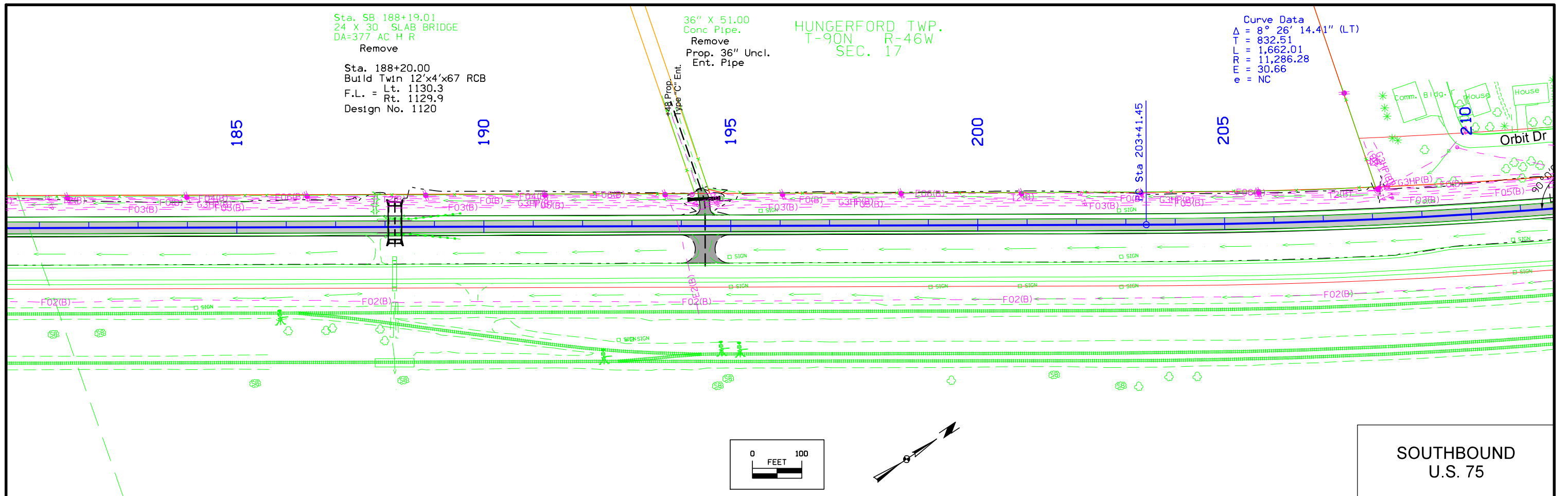
Sta. SB 188+19.01
24 X 30 SLAB BRIDGE
DA=377 AC H R
Remove

Sta. 188+20.00
Build Twin 12'x4'x67 RCB
F.L. = Lt. 1130.3
Rt. 1129.9
Design No. 1120

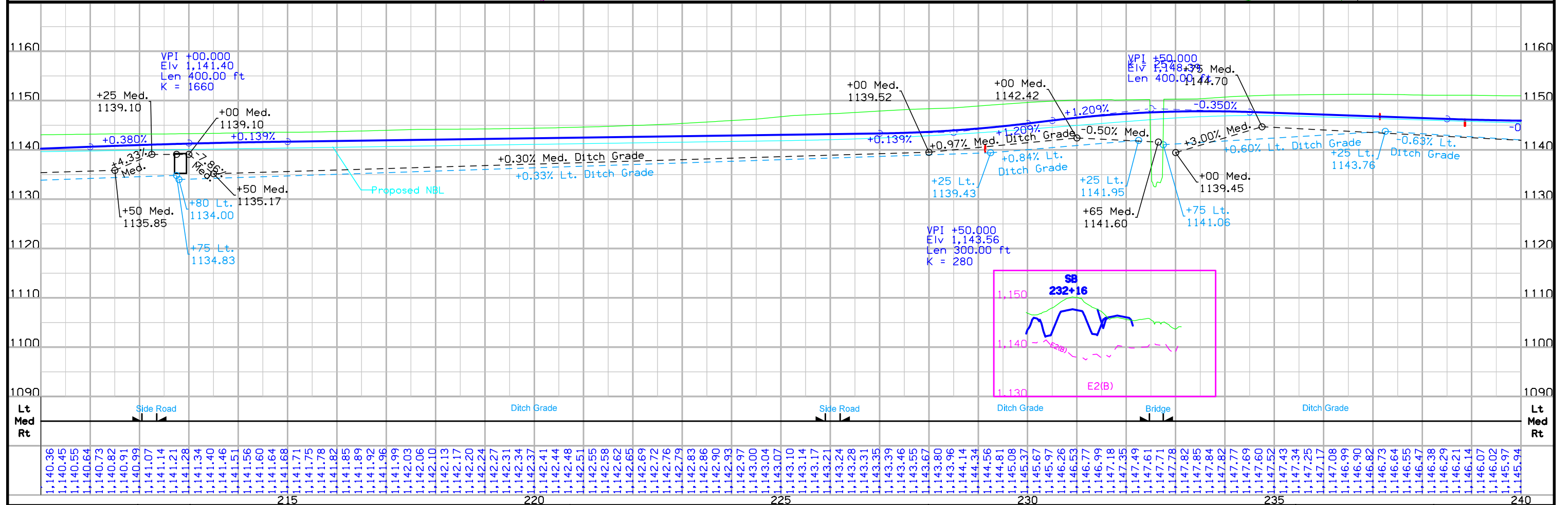
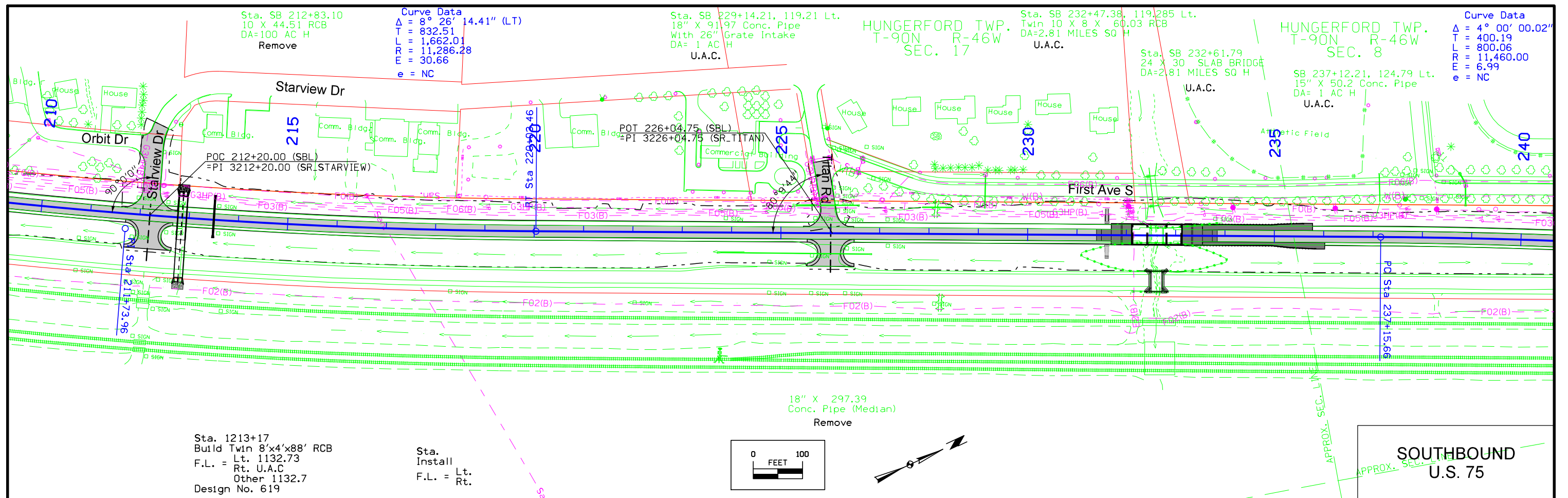
36" X 51.00
Conc. Pipe.
Remove
Prop. 36" Uncl.
Ent. Pipe

HUNGERFORD TWP.
T-90N R-46W
SEC. 17

Curve Data
Δ = 8° 26' 14.41" (LT)
T = 832.51
L = 1,662.01
R = 11,286.28
e = 30.66
m = NC



FILE NO.	ENGLISH	DESIGN TEAM	Holst \ Strum \ Janus	PLYMOUTH COUNTY	PROJECT NUMBER	NHSX-075-2(96)--3H-75	SHEET NUMBER	D.8
----------	---------	-------------	-----------------------	-----------------	----------------	-----------------------	--------------	-----



Curve Data
 $\Delta = 4^\circ 00' 00.02''$ (RT)
 $T = 400.19$
 $L = 800.06$
 $R = 11,460.00$
 $E = 6.99$
 $e = NC$

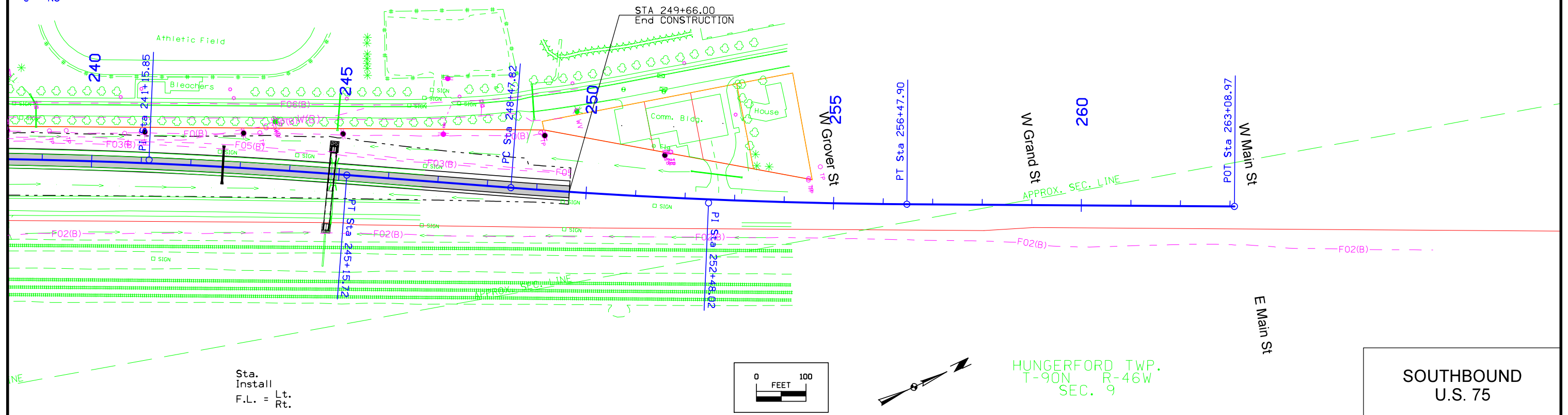
Sta. 1245+15 NBL
 Build 10'x4'x77' RCB
 F.L. = Lt. 1138.90
 Rt U.A.C.
 Other 1137.98
 Design No. 719

Sta. SB 244+89.94
 10 X 44.4 SLAB RCB
 DA=58 AC H
 Remove

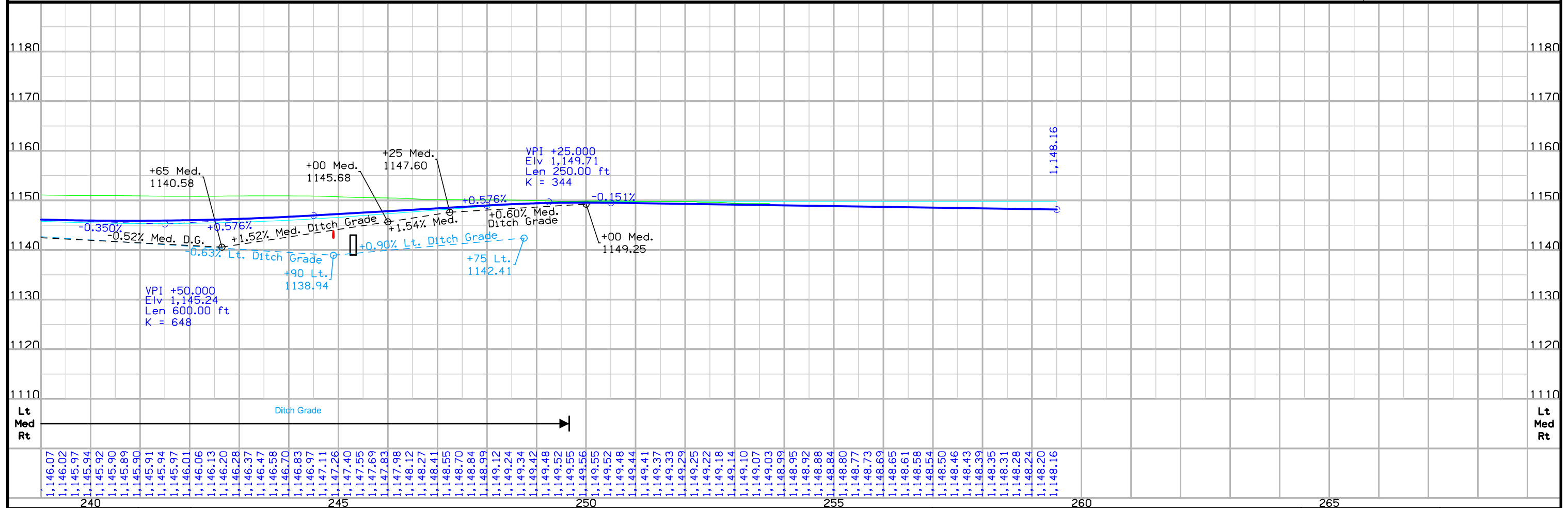
Sta. SB 244+90.90, 156.53 Lt.
 24" X 62.96 Conc. Pipe
 DA= 3 AC H
 U.A.C.

Curve Data
 $\Delta = 4^\circ 00' 00.00''$ (LT)
 $T = 400.20$
 $L = 800.07$
 $R = 11,460.23$
 $E = 6.99$

HUNGERFORD TWP.
 T-90N R-46W
 SEC. 8



SOUTHBOUND
 U.S. 75



FILE NO.	ENGLISH	DESIGN TEAM	Holst \ Strum \ Janus	PLYMOUTH COUNTY	PROJECT NUMBER	NHSX-075-2(96)--3H-75	SHEET NUMBER	D.10
----------	---------	-------------	-----------------------	-----------------	----------------	-----------------------	--------------	------