

BENCH MARK NO. 7: STA. 973+38.85, TOP OF RIGHT OF WAY RAIL, SOUTH SIDE US 6, 33.58' R., ELEV. 775.43

VPI STA = 1082+00.00
VPI ELEV = 770.52
-0.01%
VPI STA = 1092+00.00
VPI ELEV = 770.42

PROFILE GRADE ON US 6 (UAC)

LONGITUDINAL SECTION ALONG CL CULVERT

DESIGN FILL HEIGHT = 4'-0"
ANTICIPATED SETTLEMENT = NEGLIGIBLE

NOTES:

IT IS THE INTENT OF THIS DESIGN TO EXTEND THE EXISTING 4' x 3' REINFORCED CONCRETE BOX CULVERT WITH 0 DEGREE SKEW BY REMOVING THE CULVERT WINGWALLS AS REQUIRED AT THE SOUTH END AND ADDING A 4' x 3' x 17' REINFORCED CONCRETE BOX CULVERT EXTENSION AND HEADWALL ON THE SOUTH SIDE OF THE CULVERT ONLY.

THE RCB CULVERT EXTENSION IS DESIGNED FOR EARTH FILLS OF 4 FEET.

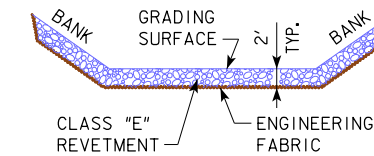
ALL UNITS ARE IN FEET UNLESS OTHERWISE NOTED OR SHOWN.

SEE ROAD SHEETS FOR ADDITIONAL INFORMATION ON PROPOSED GRADING LIMITS.

DRAINAGE THROUGH EXISTING CULVERT/CHANNEL MUST BE MAINTAINED THROUGHOUT CONSTRUCTION.

SEE H SHEETS FOR RIGHT OF WAY.

HEADWALLS SHALL BE PLACED LEVEL.



ESTIMATED REVETMENT QUANTITIES INCLUDED WITH ROAD PLANS

LOCATION	REVETMENT CL. "E" (TON)	ENGINEERING FABRIC (SY)
INLET	20.7	37.9
OUTLET	0	0
TOTALS	20.7	37.9

HYDRAULIC DATA

DRAINAGE AREA = 35.6 ACRES
Q₅₀ = 161 CFS
ROLLING

UTILITIES LEGEND:

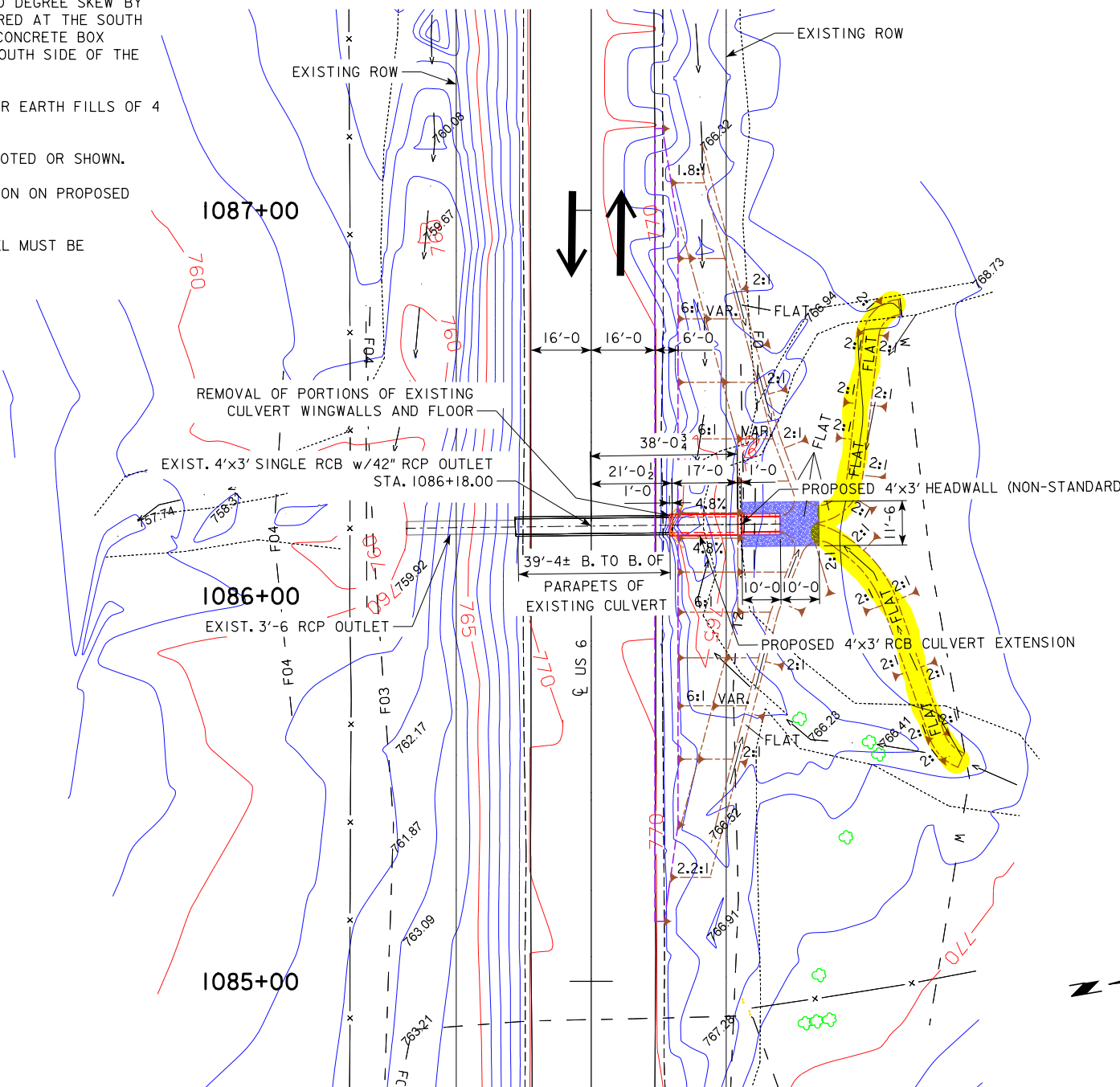
- T1 - COOPERATIVE TELEPHONE COMPANY
- F0 - IOWA NETWORK SERVICES
- G - ALLIANT ENERGY
- F02 - MCI
- F03 - MEDIACOM
- T2 - WINDSTREAM COMMUNICATIONS
- F04 - SOUTH SLOPE COOPERATIVE
- W - POWESHIK WATER ASSOCIATION
- x- - FENCE

LOCATION

ON US 6 OVER
DRAINAGE DITCH
T-80N R-9W
SECTION 6
IOWA TOWNSHIP
IOWA COUNTY
LATITUDE 41.771544
LONGITUDE -91.945344

TRAFFIC ESTIMATE

2014 AADT	2350	V.P.D.
2034 AADT	2900	V.P.D.
TRUCKS	9%	
DESIGN ESALS	800,000	



SITUATION PLAN

DESIGN FOR 0° SKEW
4'x3' REINFORCED CONCRETE BOX CULVERT EXTENSION SITUATION PLAN

STATION 1086+18.00 (US 6) DECEMBER, 2017

IOWA COUNTY

IOWA DEPARTMENT OF TRANSPORTATION - HIGHWAY DIVISION
DESIGN SHEET NO. 3 OF 11 FILE NO. 31463 DESIGN NO. 517

