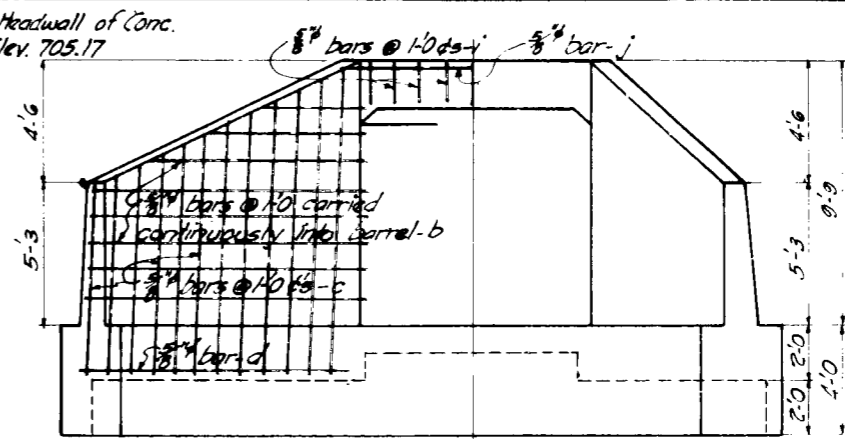
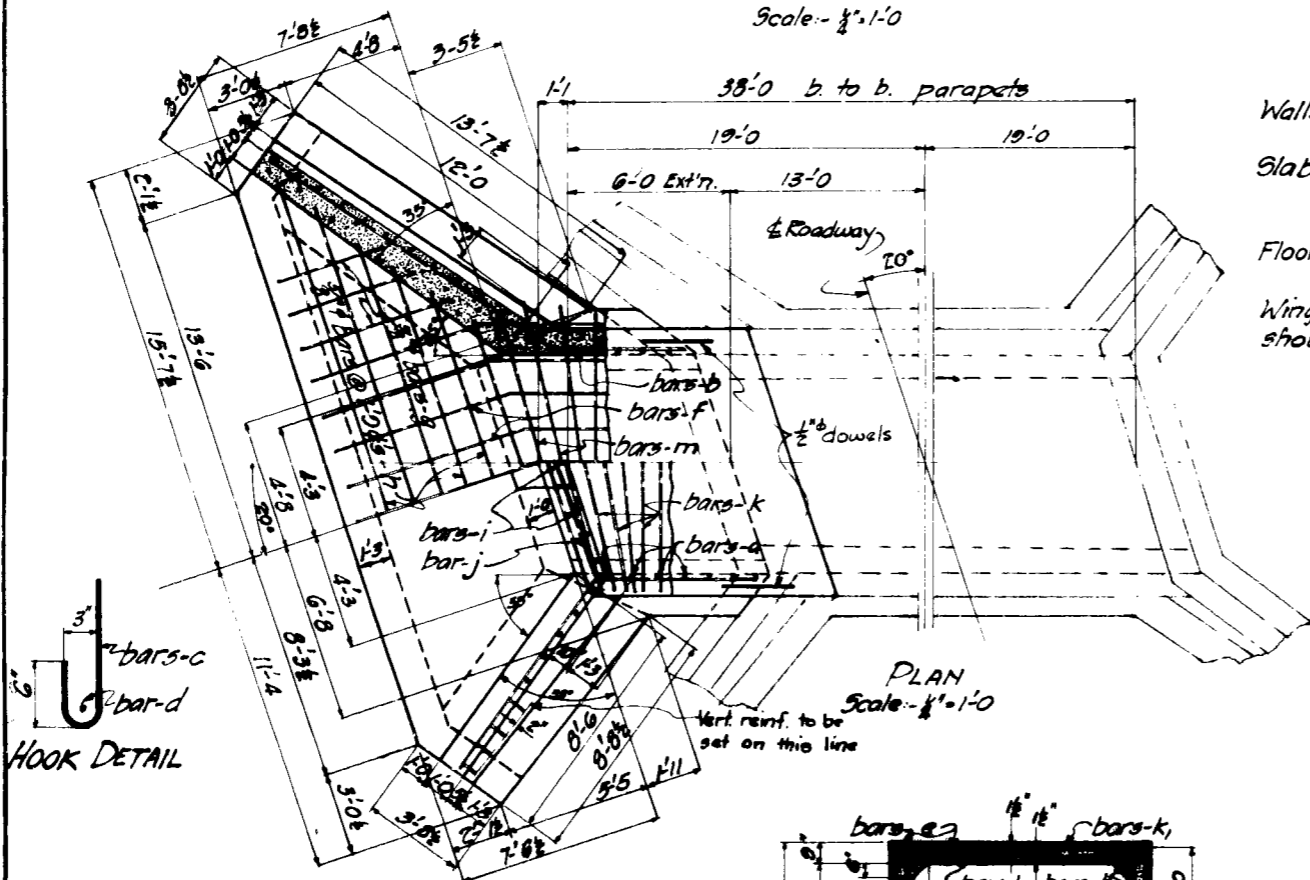


LONGITUDINAL SECTION ON 2
Scale: 1/4" = 1'-0"

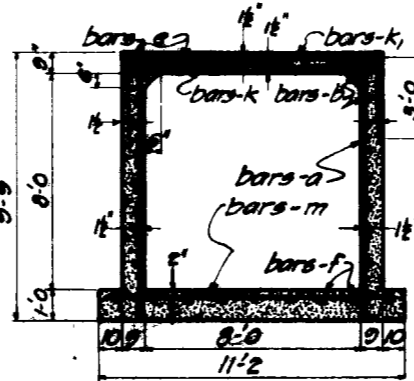


OUTLET END ELEVATION
Scale: 1/4" = 1'-0"



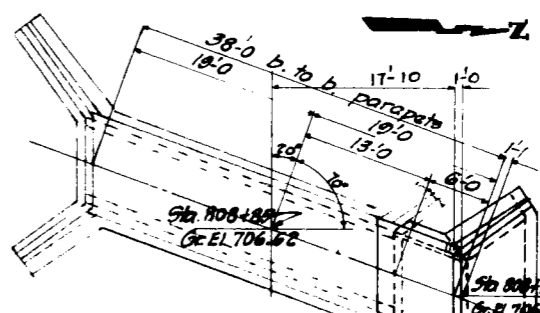
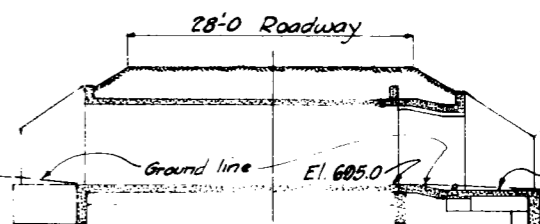
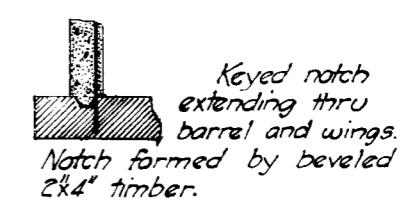
PLAN
Scale: 1/4" = 1'-0"

General Notes:-
 Longitudinal bars -b- to be continuous, splicing of bars in no case to occur at junction of wing and barrel. Use a 2'-0" lap on all splices.
 Foundations to be carried deeper, if necessary. Paving at outlet to be level.
 Red or faint lines indicate old structure.
 All exposed corners, 90° or sharper, to be filleted with a 1" dressed beveled strip.
 Standard Specifications of the Iowa Highway Commission, 1923 Series for Construction.



CROSS SECTION
Scale: 1/4" = 1'-0"

Reinforcing Steel
 Walls:- Vert, 5/8" bars at 1'-0" ds - a.
 Horiz, 5/8" bars at 1'-0" ds - b.
 Slab:- Long, 6-5/8" bars as shown - e.
 Transv, (top) 5/8" bars at 1'-6" ds - k.
 " (bottom) 5/8" bars at 6" ds - k.
 Floor:- Long, 5/8" bars at 1'-3" ds - f.
 Transv, 5/8" bars at 6" ds - m.
 Wings, parapet and pavement as shown.



SITUATION PLAN
Scale: 1/4" = 1'-0"

QUANTITIES
 Conc. 28.5 CY
 Steel 1300 #.

Bridge No.
 Sec. 30
 Deer Creek Twp.
 Clinton Co.

Design for
8x8 BOX CULVERT EXTENSION
 Reinforced Concrete
 Sta. 808+85 Primary Project No. 352
 CLINTON COUNTY B. 257
 Iowa Highway Commission
 Aug. 15, 1923 Scales as noted

Design No. 58 Clinton County 1923