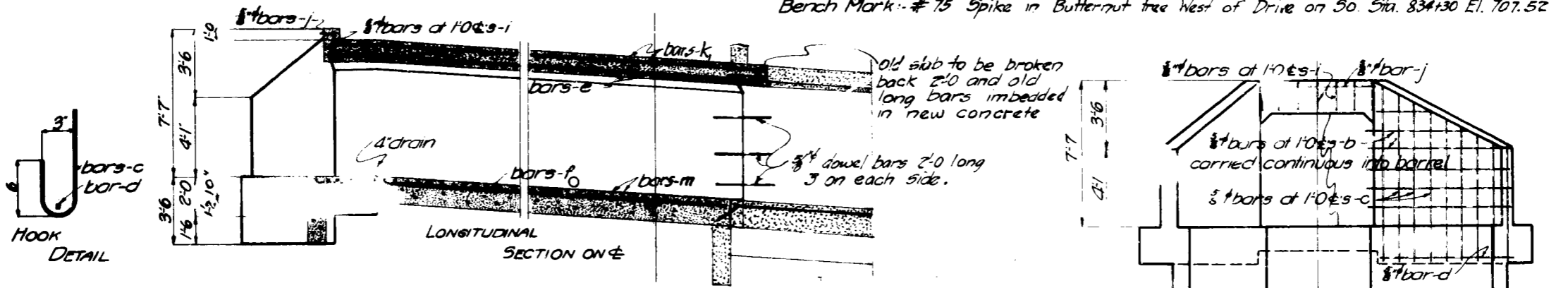


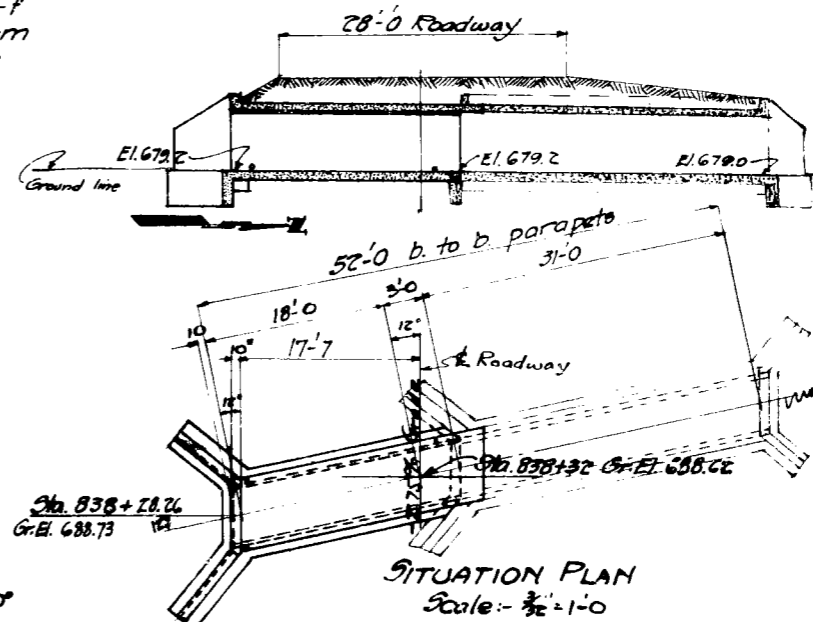
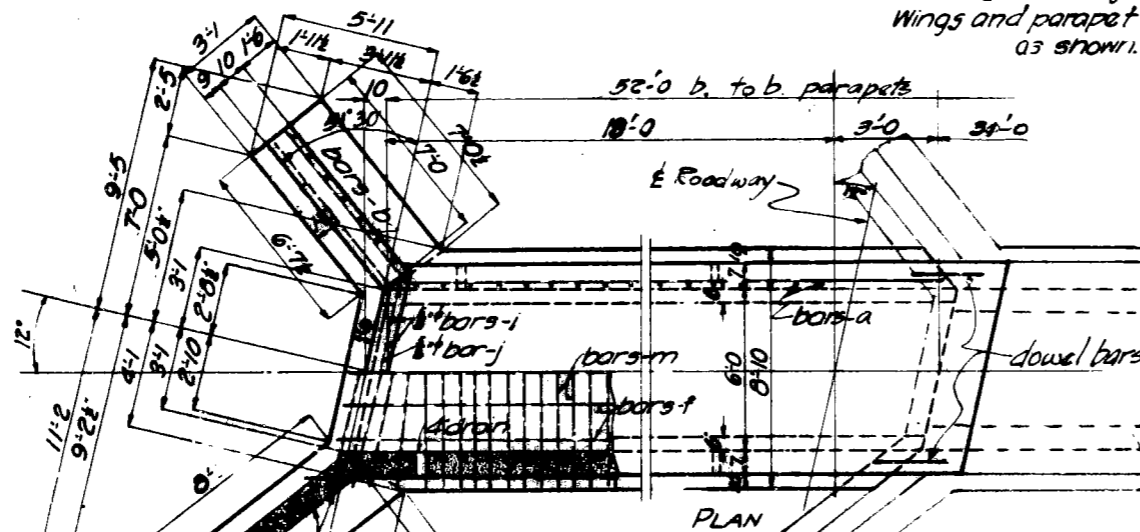
Bench Mark: #75 Spike in Butternut tree West of Drive on So. Sta. 834+30 El. 707.52



General Notes:-

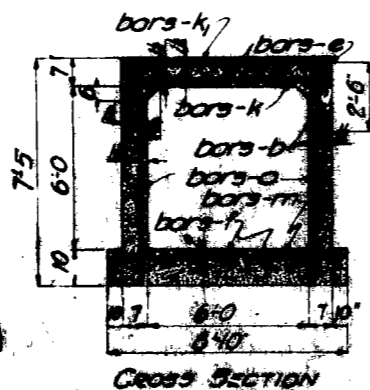
Longitudinal bars-b to be continuous, splicing of bars in no case to occur at junction of wing and barrel. If longitudinal bars are spliced use a 2'-0" lap.
 Foundations to be carried deeper if necessary.
 Standard Specifications of the Iowa Highway Commission, 1923 Series for construction.

Reinforcing Steels:-
 Wall: Vertical, $\frac{5}{8}$ " bars at 1'-0" s-a
 Horizontal, $\frac{5}{8}$ " bars at 1'-0" s-b
 Slab: Longitudinal, 5- $\frac{5}{8}$ " bars-e
 Trans. bottom, $\frac{5}{8}$ " bars at 8" s-k
 Trans. top, $\frac{5}{8}$ " bars at 1'-6" s-k
 Floor: Longitudinal, $\frac{5}{8}$ " bars at 1'-3" s-f
 Transverse, $\frac{5}{8}$ " bars at 8" s-m
 Wings and parapet reinforcing as shown.



Note:- All exposed corners, 90° or sharper, to be filleted with a 1" dressed beveled strip.
 Red or faint lines indicate old work.

Keyed Notch extending thru barrel and wing.
 Notch formed by beveled 2"x8" timber.



Bridge No.
 Sec. 25
 Waterford Twp.
 Clinton Co.

-735
 1900

Design for
6'x6' SKEW BOX CULVERT, EXTN.
 Reinforced Concrete
 Sta. 838+32 Primary Project No. 352 B-257
 CLINTON COUNTY
 Iowa Highway Commission
 Aug. 20, 1923 Scale 2"=1'-0"

Design No 61, Clinton County 1923