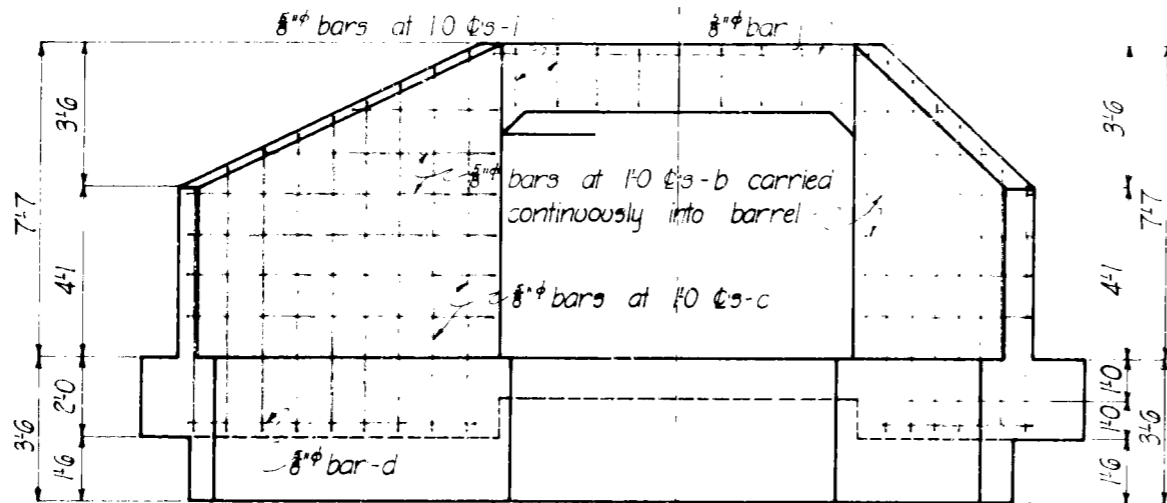
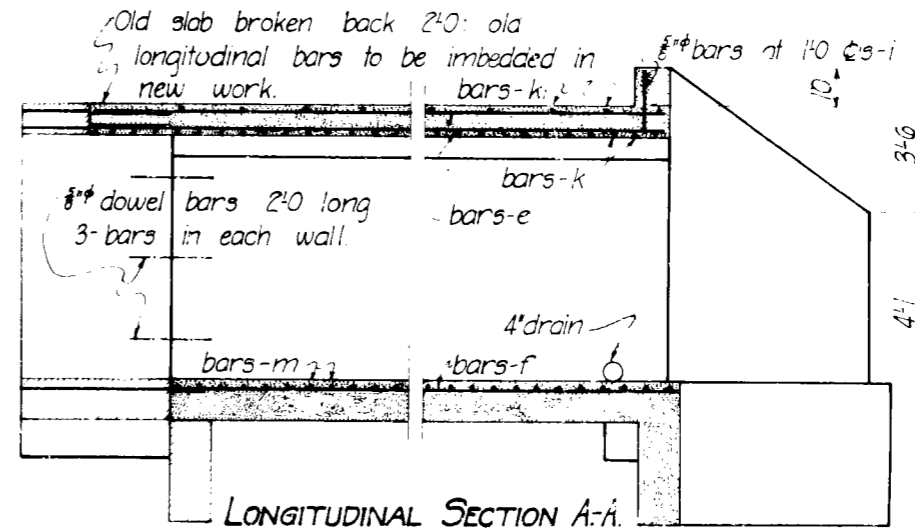


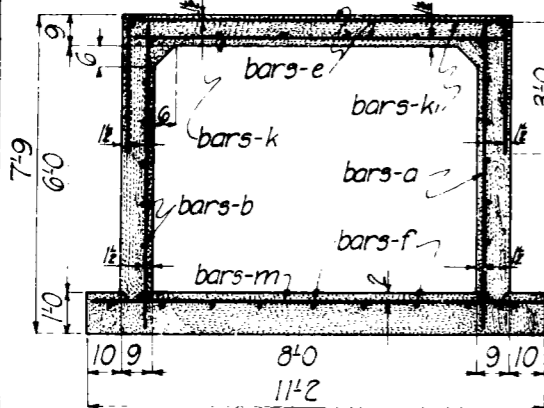
Bench Mark #76 Spike in root of cottonwood on S Sta. 844+56 El. 680.66



ELEVATION  
Scale 1/4"=1'-0"

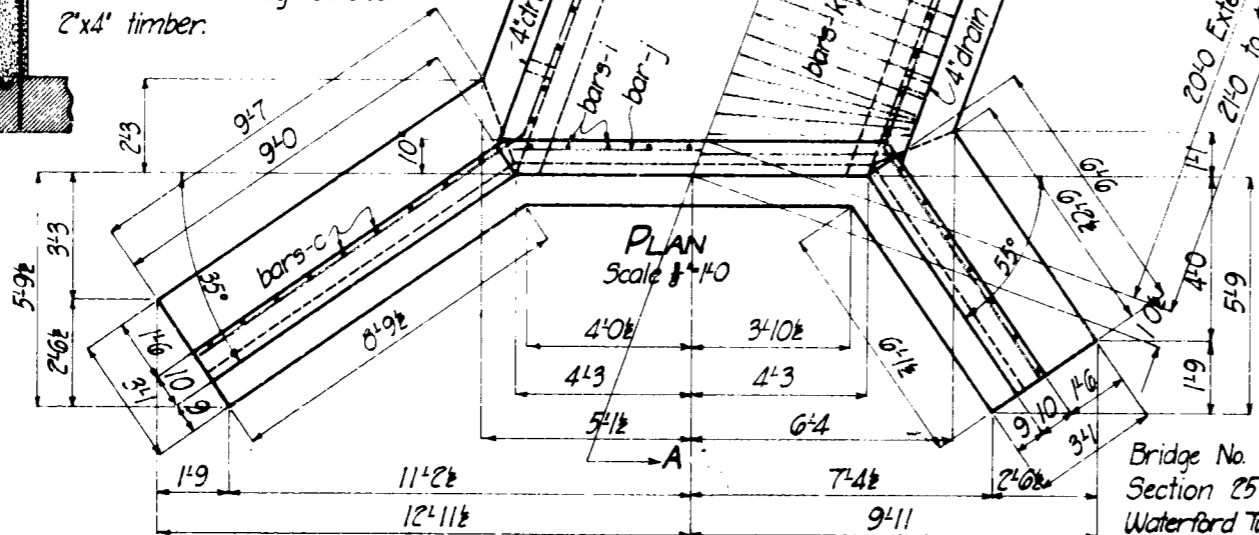
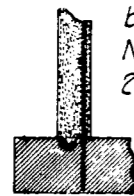


LONGITUDINAL SECTION A-A  
Scale 1/4"=1'-0"



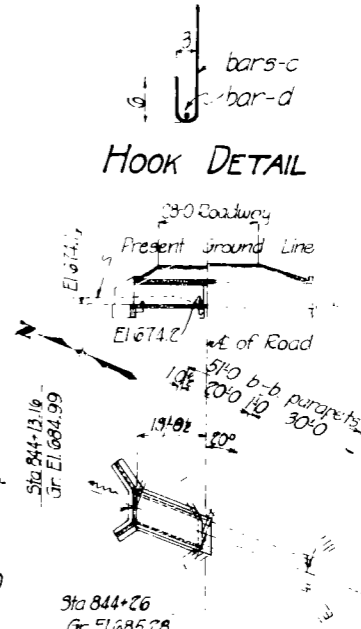
CROSS SECTION  
Scale 1/4"=1'-0"

Keyed Notch extending thru barrel and wings. Keyed Notch formed by beveled 2"x4" timber.



PLAN  
Scale 1/4"=1'-0"

Reinforcing Steel:-  
Wall:- Vertical, 8# bars at 1'-0" #s-a  
Horizontal, 8# bars at 1'-0" #s-b  
Slab:- Longitudinal, 6-8# bars as shown-e  
Trans (top), 8# bars at 1'-6" #s-k  
Trans (bottom), 8# bars at 5'-6" #s-l  
Floor:- Longitudinal 8# bars at 1'-3" #s-f  
Transverse, 8# bars at 5'-6" #s-m  
Wings and parapet reinforced as shown.



HOOK DETAIL

SITUATION PLAN  
Scale 1"=20'-0"

General Notes :-  
Longitudinal bars b. to be continuous splicing of bars in no case to occur at junction of wing and barrel. Use a 2'-0" lap on all splices.  
Footings to be carried deeper if necessary.  
Red or faint lines indicate old work.  
All exposed corners corners 90° or sharper to be filleted with 1" dressed beveled strip.  
Standard Specification of the Iowa State Highway Commission. Use 1923 series for construction.

QUANTITIES	
Concrete	29.8 Cu.Yds.
Steel	2420 pounds.

Design for  
**8'x6' SKEW BOX CULV. EXTENSION**  
Reinforced Concrete  
Station 844+26 Primary Project No. 352  
CLINTON COUNTY  
Iowa State Highway Commission.  
August 1923  
Scale as noted

Design 62 Clinton County 1923

HWS AWS J.P.A.