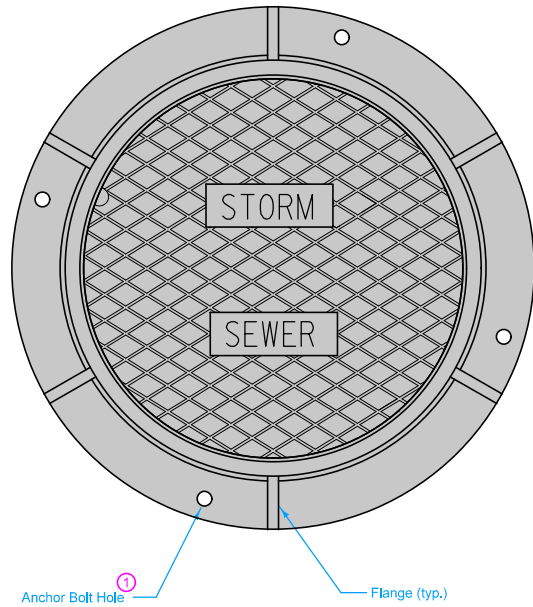
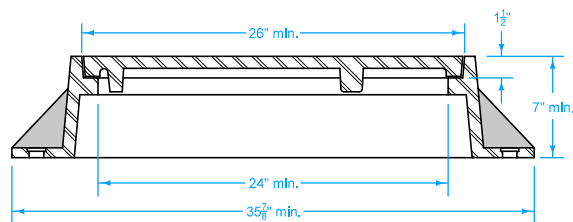


TYPE E

Two-piece fixed casting



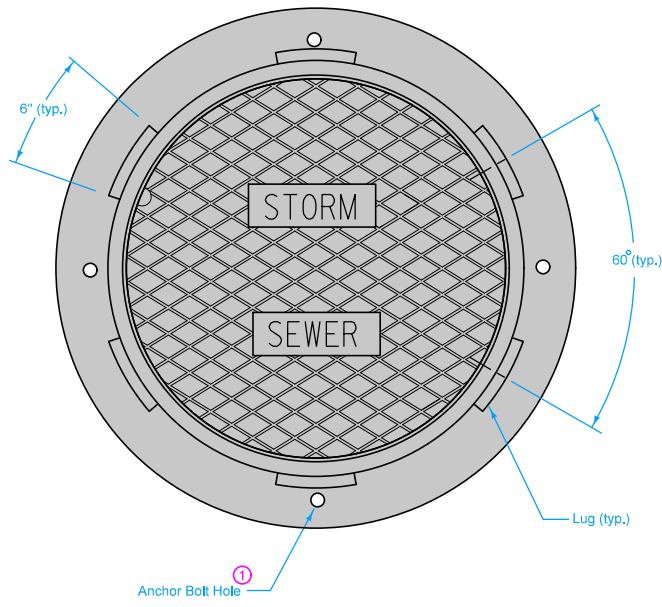
PLAN



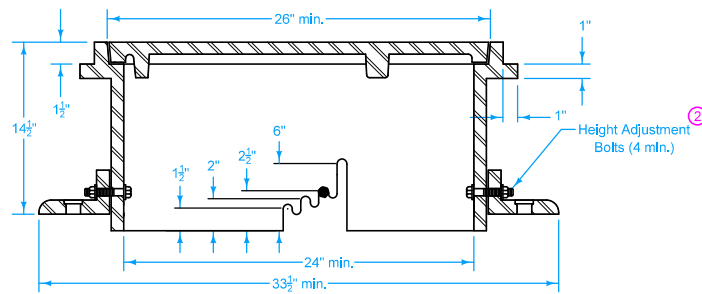
TYPICAL SECTION

TYPE F

Three-piece floating casting



PLAN



TYPICAL SECTION

Frame Notes:
Size and spacing of lugs and flanges may vary.

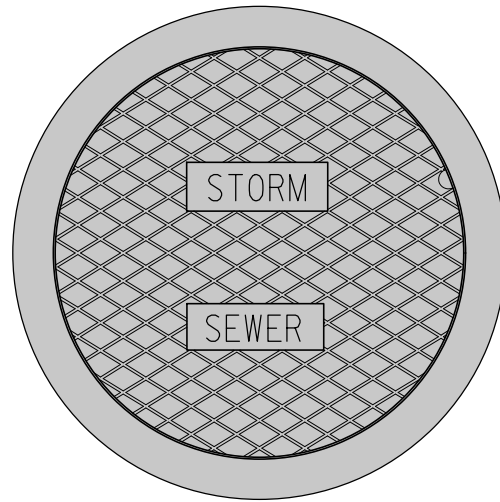
Cover Notes:
Roughness pattern and text styles may vary.
Minimum one concealed pickhole.

- ① When the contract documents require the frame to be attached to the structure, drill four $\frac{7}{8}$ " diameter holes or slots, equally spaced around frame.
- ② Set casting at proper grade using one of the adjustment slots. Remove bolts upon completion of paving.

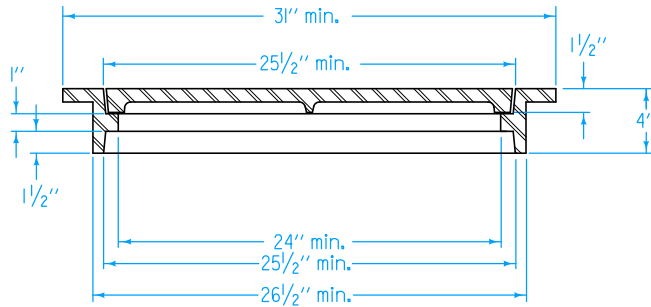
FIGURE 6010.602 SHEET 1 OF 2

SUDAS IOWADOT	REVISION 3 04-21-15
	SW-602 SHEET 1 of 2
REVISIONS: Revised three-piece casting configuration. Modified circle note 2.	
<i>Paul D. Wigand</i> SUDAS DIRECTOR	
<i>Brian Smith</i> DESIGN METHODS ENGINEER	
CASTINGS FOR STORM SEWER MANHOLES	

TYPE G
Two-piece fixed casting



PLAN



TYPICAL SECTION

FIGURE 6010.602 SHEET 2 OF 2

SUDAS	IOWADOT	REVISION
		3 04-21-15
FIGURE 6010.602	STANDARD ROAD PLAN	SW-602
		SHEET 2 of 2
REVISIONS: Revised three-piece casting configuration. Modified circle note 2.		
<i>Paul D. Wigand</i> SUDAS DIRECTOR		<i>Brian Smith</i> DESIGN METHODS ENGINEER
CASTINGS FOR STORM SEWER MANHOLES		