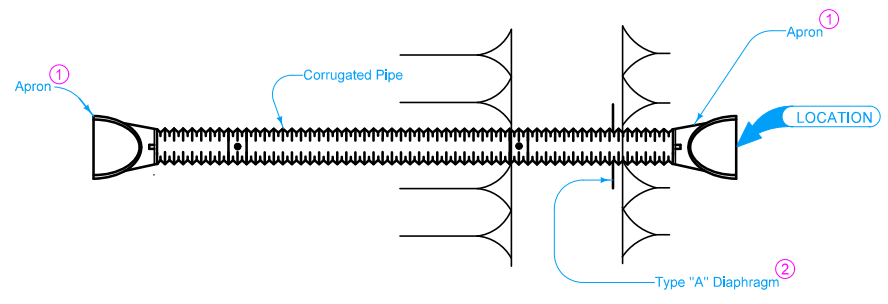


A+B+C = Pipe Length

SECTION



PLAN

Standard type joint couplings are required. See [Materials I.M. 441](#).

Connection to outlet, if required, is incidental and will not be paid for separately.

- ① Refer to the following:  
[DR-203](#) for the circular metal.  
[DR-204](#) for arch metal.
- ② See [DR-501](#). If more than one diaphragm is specified, install 15 feet apart or as specified.

Possible Tabulations:  
104-3

	REVISION
	1   04-18-17
<b>STANDARD ROAD PLAN</b>	<b>DR-632</b>
SHEET 1 of 1	
REVISIONS: Modified note 1 to include references to additional apron types.	
APPROVED BY DESIGN METHODS ENGINEER	
<b>CORRUGATED PIPE CULVERT          LETDOWN STRUCTURE          WITH DOUBLE ELBOW</b>	