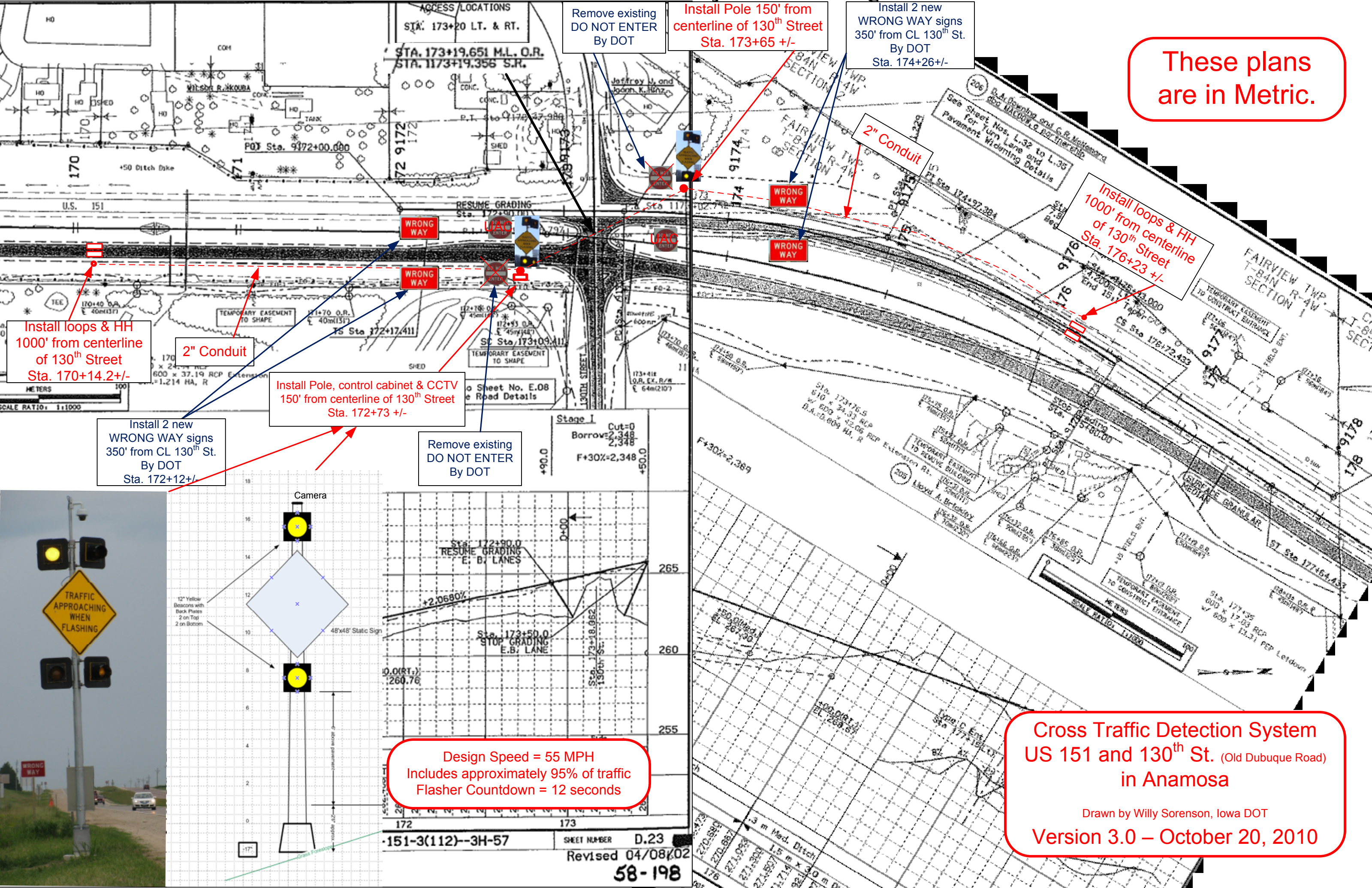


These plans are in Metric.



Install loops & HH
1000' from centerline
of 130th Street
Sta. 170+14.2 +/-

2" Conduit

Install Pole, control cabinet & CCTV
150' from centerline of 130th Street
Sta. 172+73 +/-

Install 2 new
WRONG WAY signs
350' from CL 130th St.
By DOT
Sta. 172+12 +/-

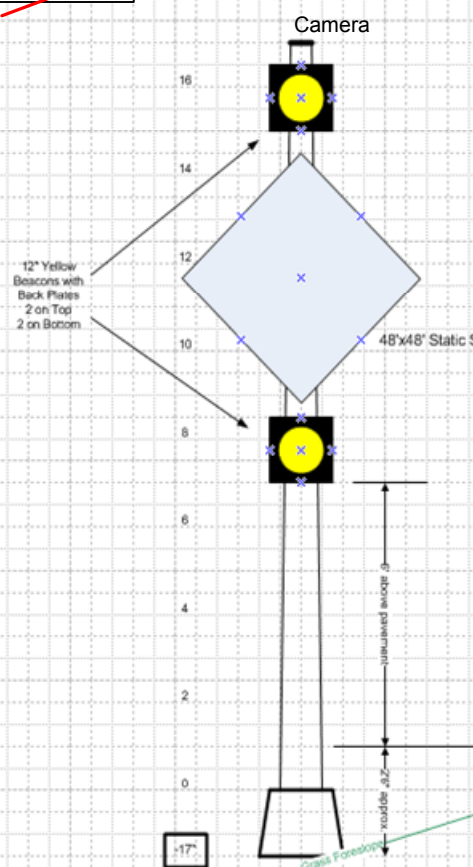
Remove existing
DO NOT ENTER
By DOT

Remove existing
DO NOT ENTER
By DOT

Install Pole 150' from
centerline of 130th Street
Sta. 173+65 +/-

Install 2 new
WRONG WAY signs
350' from CL 130th St.
By DOT
Sta. 174+26 +/-

Install loops & HH
1000' from centerline
of 130th Street
Sta. 176+23 +/-



Design Speed = 55 MPH
Includes approximately 95% of traffic
Flasher Countdown = 12 seconds

Cross Traffic Detection System
US 151 and 130th St. (Old Dubuque Road)
in Anamosa
Drawn by Willy Sorenson, Iowa DOT
Version 3.0 – October 20, 2010

151-3(112)-3H-57 SHEET NUMBER D.23
Revised 04/08/02
58-198