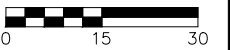


NOTICE:
 McClure Engineering Co. is not responsible or liable for any issues, claims, damages, or losses (collectively, "Losses") which arise from failure to follow these Plans, Specifications, and the engineering intent they convey, or for Losses which arise from failure to obtain and/or follow the engineers' or surveyors' guidance with respect to any alleged errors, omissions, inconsistencies, ambiguities, or conflicts contained within the Plans and Specifications.

IOWA CERTIFICATE OF AUTHORITY NO. 26887



REVISIONS

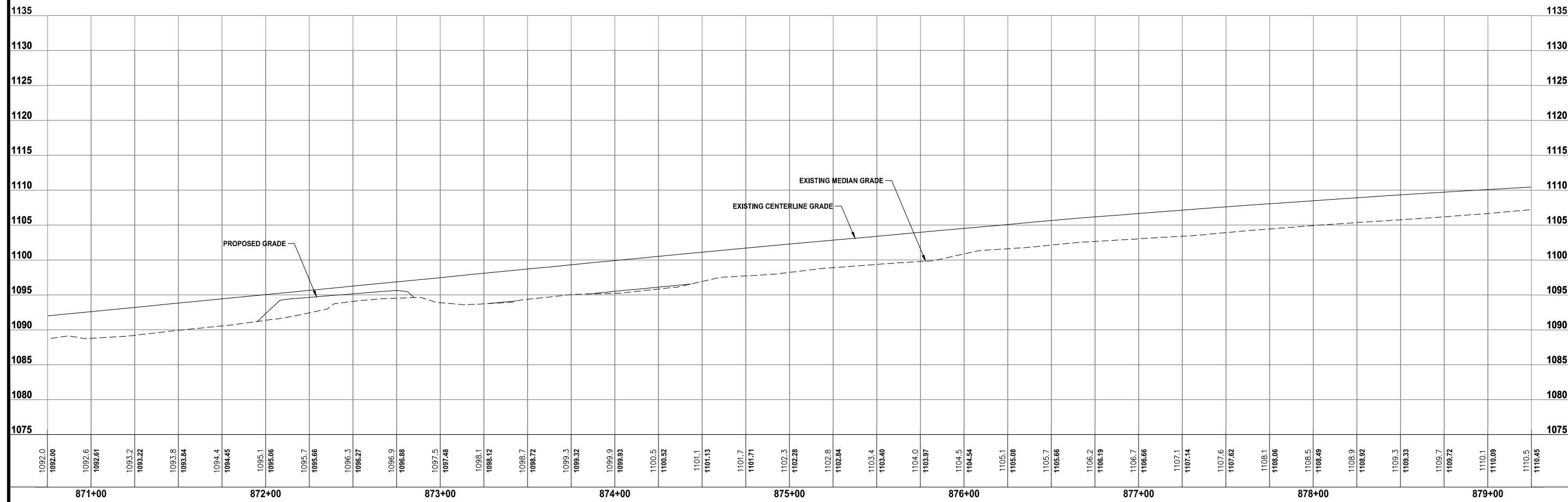
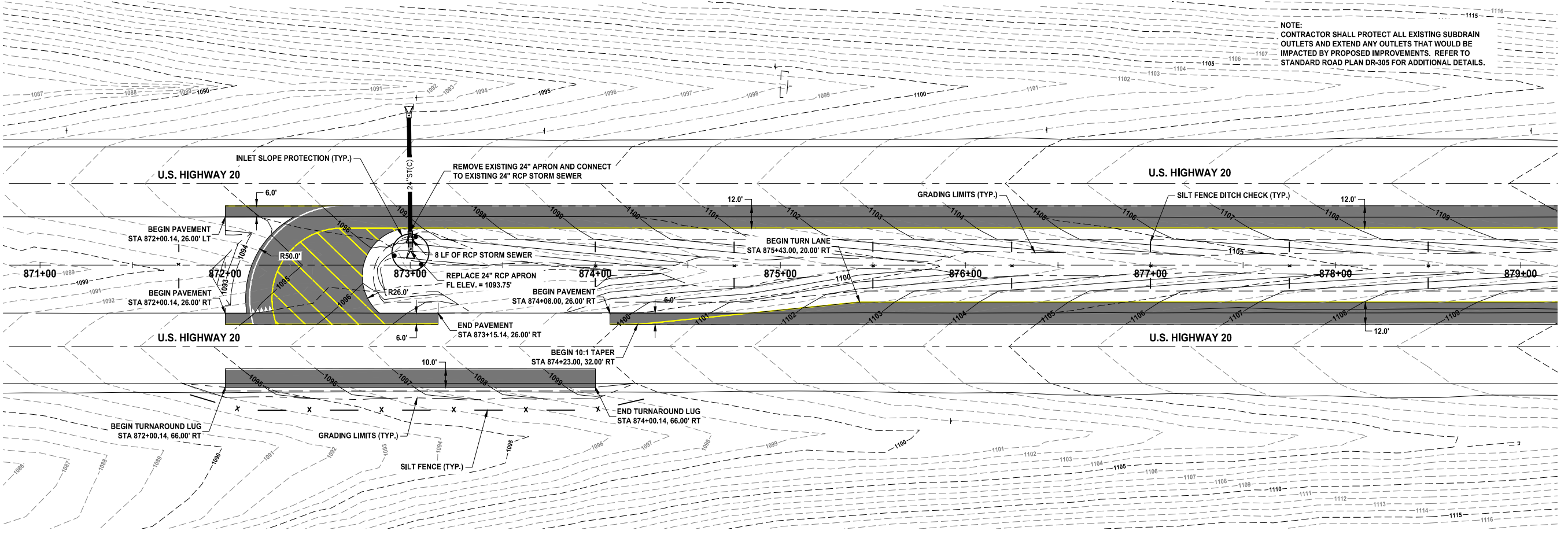
PROJECT INFO
 210178-004

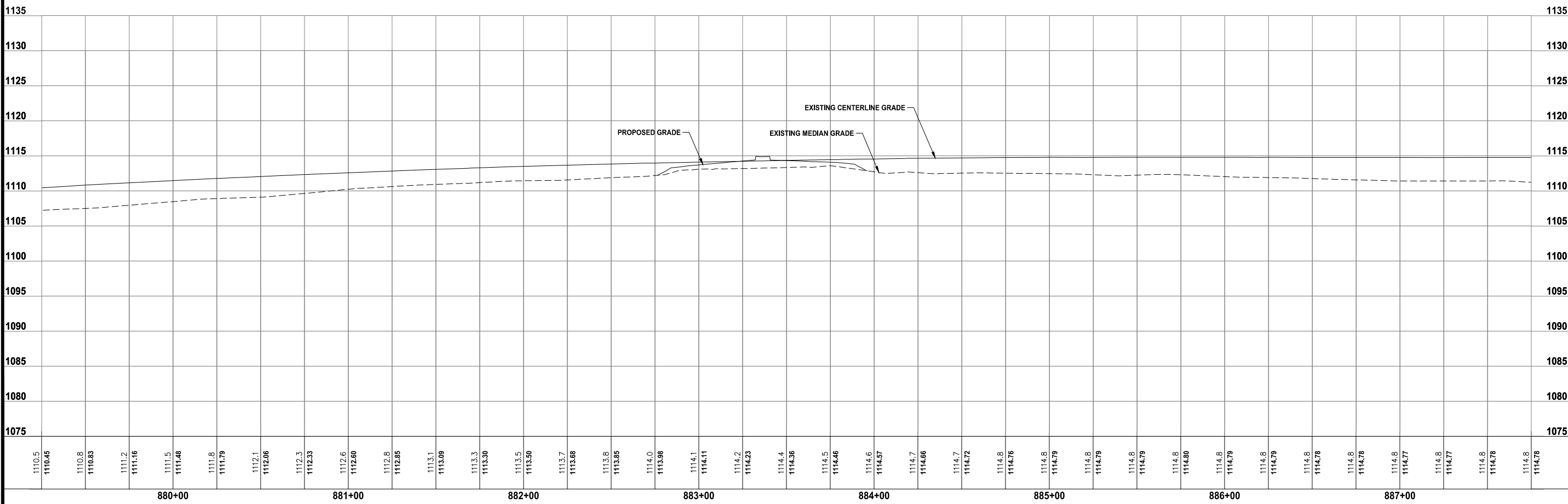
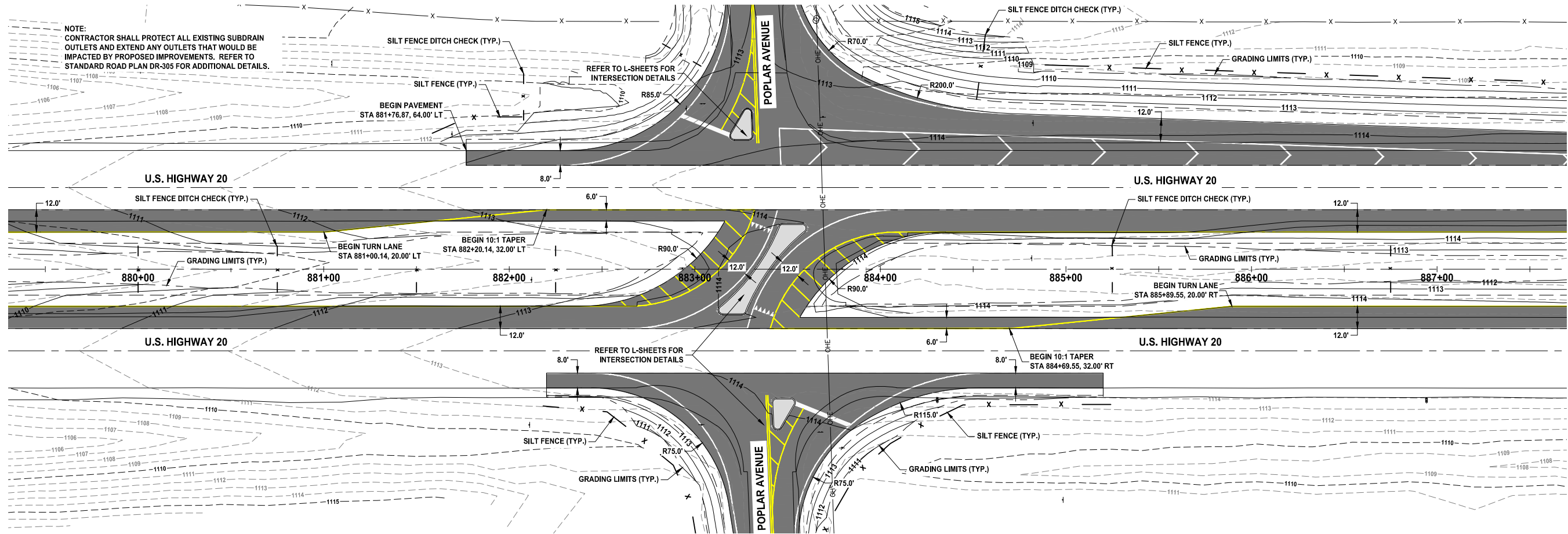
ENGINEER: CFF DRAWN BY: BAV CHECKED BY: JSS

**US HIGHWAY 20 AND POPLAR AVENUE
 RCUT INTERSECTION IMPROVEMENTS
 WEBSTER COUNTY, IOWA**

U.S. HIGHWAY 20 PLAN AND PROFILE

DRAWING NO.
D.01





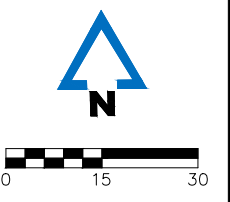
NOTE:
CONTRACTOR SHALL PROTECT ALL EXISTING SUBDRAIN
OUTLETS AND EXTEND ANY OUTLETS THAT WOULD BE
IMPACTED BY PROPOSED IMPROVEMENTS. REFER TO
STANDARD ROAD PLAN DR-305 FOR ADDITIONAL DETAILS.

McCLURE™
705 First Avenue North
Fort Dodge, Iowa 50501
P 515-576-7155
F 515-576-4235

Ankeny, IA | Carroll, IA | Clive, IA
Cedar Rapids, IA | Fort Dodge, IA
North Liberty, IA | Sioux City, IA
Macon, MO | Columbia, MO
North Kansas City, MO
Lenexa, KS

NOTICE:
McClure Engineering Co. is not
responsible or liable for any issues,
claims, damages, or losses
(collectively, "Losses") which arise
from failure to follow these Plans,
Specifications, and the engineering
intent they convey, or for Losses
which arise from failure to obtain
and/or follow the engineers' or
surveyors' guidance with respect to
any alleged errors, omissions,
inconsistencies, ambiguities, or
conflicts contained within
the Plans and Specifications.

IOWA CERTIFICATE OF
AUTHORITY NO. 26887



REVISIONS

PROJECT INFO
210178-004

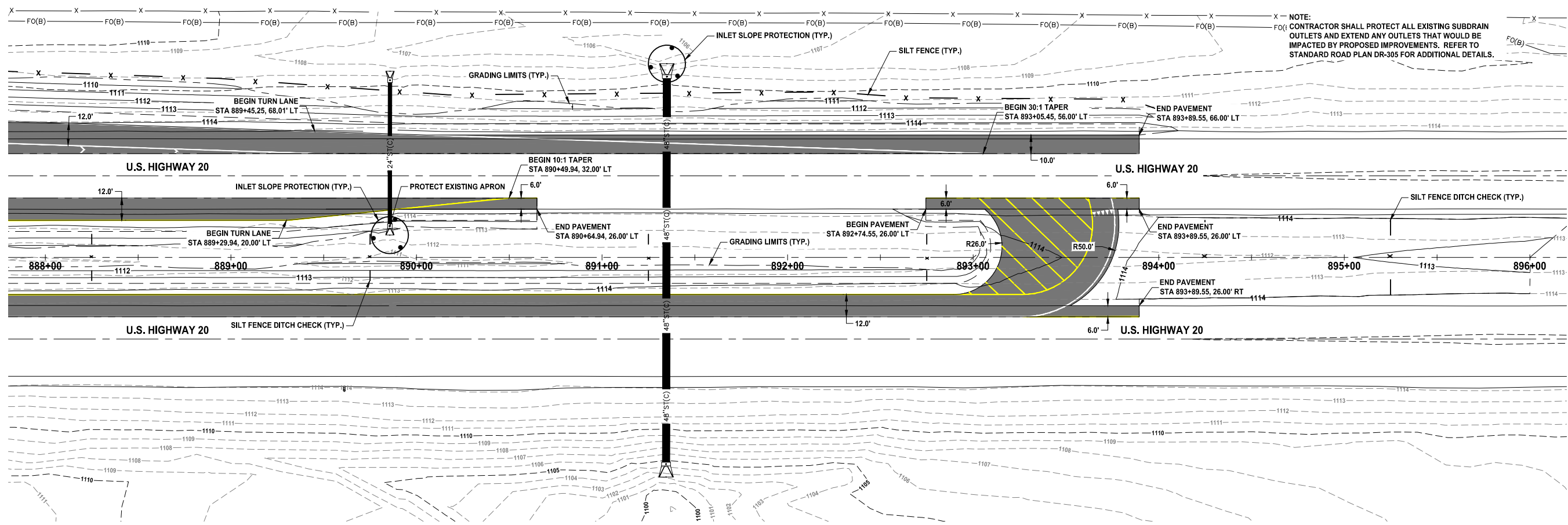
ENGINEER: CFF DRAWN BY: BAV CHECKED BY: JSS

**U.S. HIGHWAY 20 AND POPLAR AVENUE
RCUT INTERSECTION IMPROVEMENTS
WEBSTER COUNTY, IOWA**

U.S. HIGHWAY 20 PLAN AND PROFILE

DRAWING NO.
D.02

R:210178-004-06-DRAWINGS/CIVIL/PLANS/D.01.DWG



NOTE: CONTRACTOR SHALL PROTECT ALL EXISTING SUBDRAIN OUTLETS AND EXTEND ANY OUTLETS THAT WOULD BE IMPACTED BY PROPOSED IMPROVEMENTS. REFER TO STANDARD ROAD PLAN DR-305 FOR ADDITIONAL DETAILS.



705 First Avenue North
Fort Dodge, Iowa 50501
P 515-576-7155
F 515-576-4235

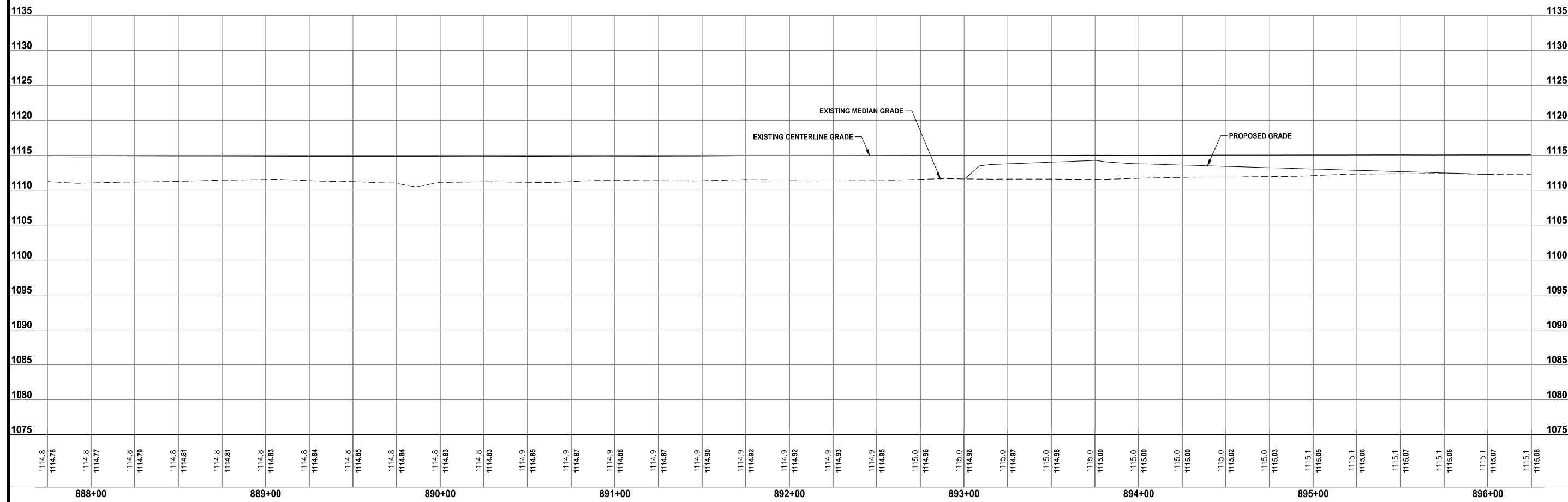
Ankeny, IA | Carroll, IA | Clive, IA
Cedar Rapids, IA | Fort Dodge, IA
North Liberty, IA | Sioux City, IA
Macon, MO | Columbia, MO
North Kansas City, MO
Lenexa, KS

NOTICE: McClure Engineering Co. is not responsible or liable for any issues, claims, damages, or losses (collectively, "Losses") which arise from failure to follow these Plans, Specifications, and the engineering intent they convey, or for Losses which arise from failure to obtain and/or follow the engineers' or surveyors' guidance with respect to any alleged errors, omissions, inconsistencies, ambiguities, or conflicts contained within the Plans and Specifications.

IOWA CERTIFICATE OF AUTHORITY NO. 26887



REVISIONS



PROJECT INFO
210178-004

ENGINEER: CFF
DRAWN BY: BAV
CHECKED BY: JSS

**US HIGHWAY 20 AND POPLAR AVENUE
RCUT INTERSECTION IMPROVEMENTS
WEBSTER COUNTY, IOWA**

U.S. HIGHWAY 20 PLAN AND PROFILE

DRAWING NO.
D.03

R:121078-004106-DRAWINGS\CIVIL\PLANS\01.DWG