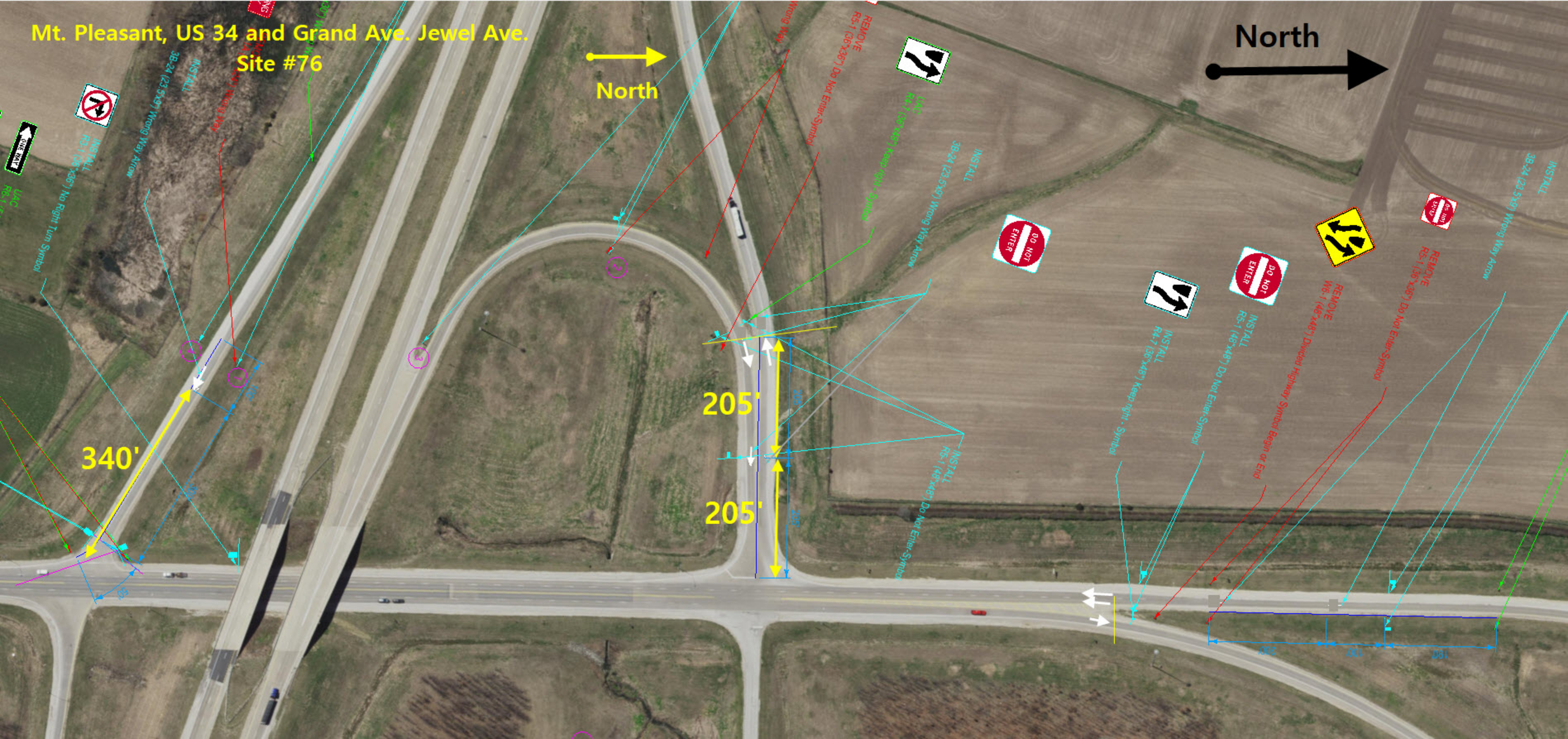
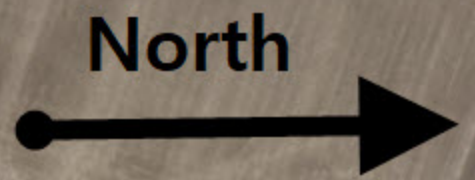


Mt. Pleasant, US 34 and Grand Ave. Jewel Ave.
Site #76



340'

205'

205'



1

2

3



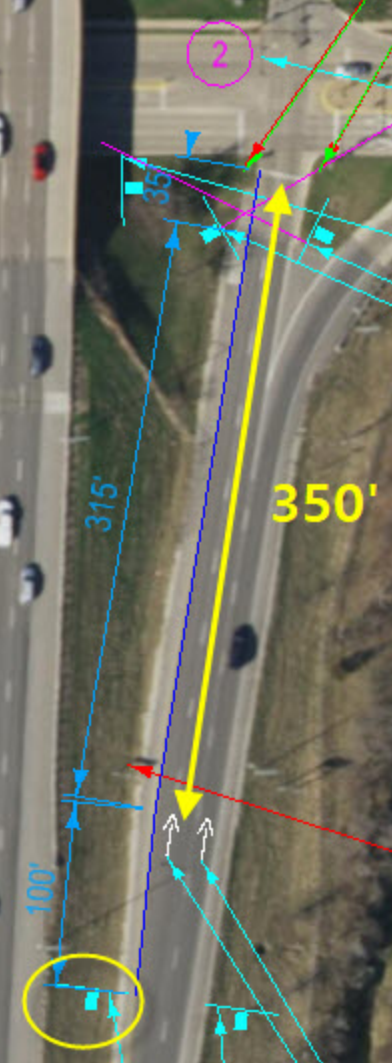
Cedar Rapids

I-380 and 29th / ColdStream

#77



back of exit gore sign
signal mast arm



R5-1 (36"x36") Do Not Enter-Symbol



UAC
R5-1 (36"x36") Do Not Enter-Symbol

Zoom Out

Zoom Ratio: 2.00

Move Camera

INSTALL
R3-2 (36"x36") No Left Turn Symbol



INSTALL
R3-1 (36"x36") No Right Turn Symbol



INSTALL
R5-1 (48"x48") Do Not Enter-Symbol

REMOVE
R5-1A (36"x24") Wrong Way



UAC

Cedar Rapids
I-380 and Diagonal
#78



Pan View —
 Move Camera



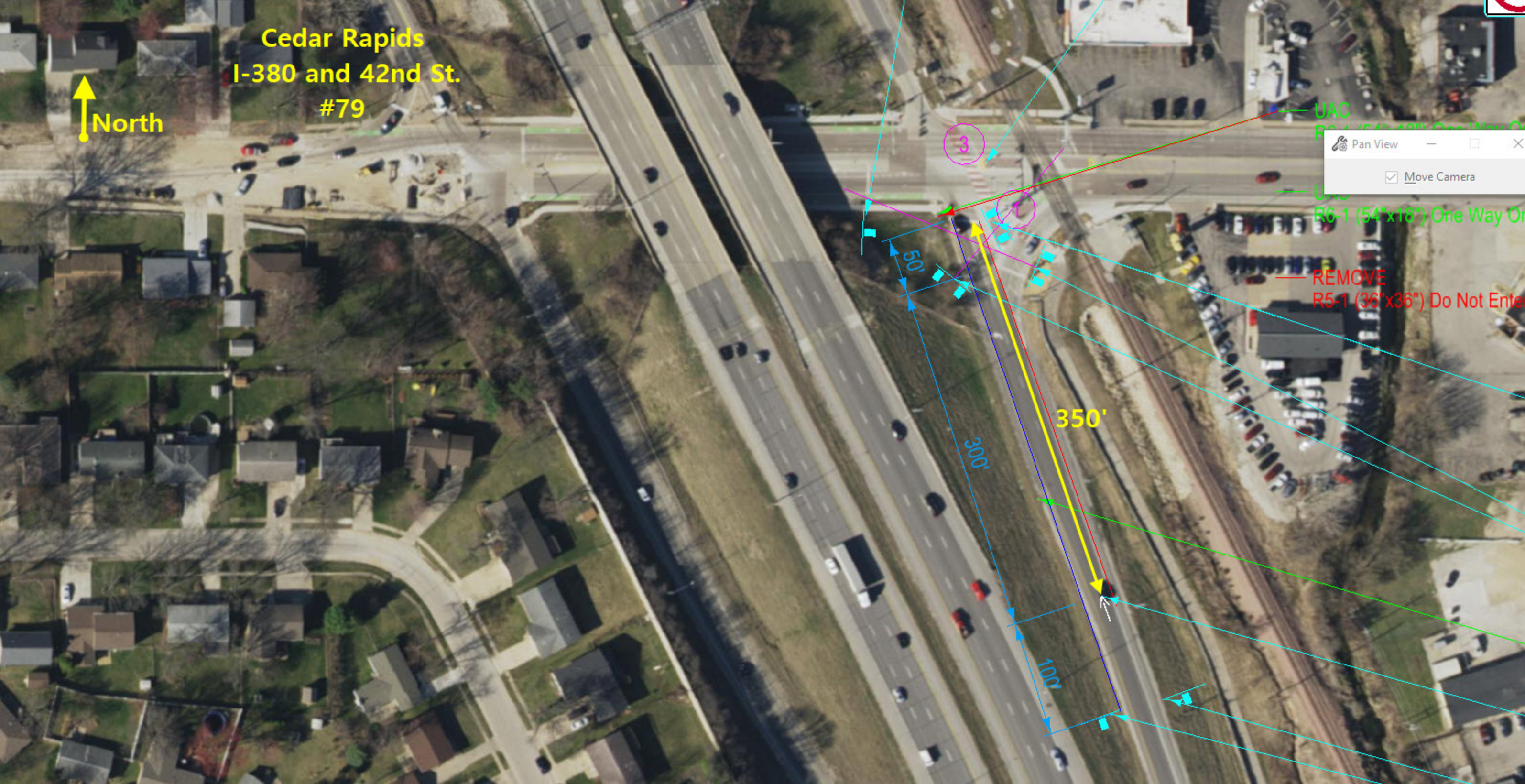
Cedar Rapids
I-380 and 42nd St.
#79

North

UAC
R6-1 (54"x18") One Way On

REMOVE
R5-1 (36"x36") Do Not Enter

Pan View
Move Camera





Cedar Rapids
I-380 and Boyson Rd
#80

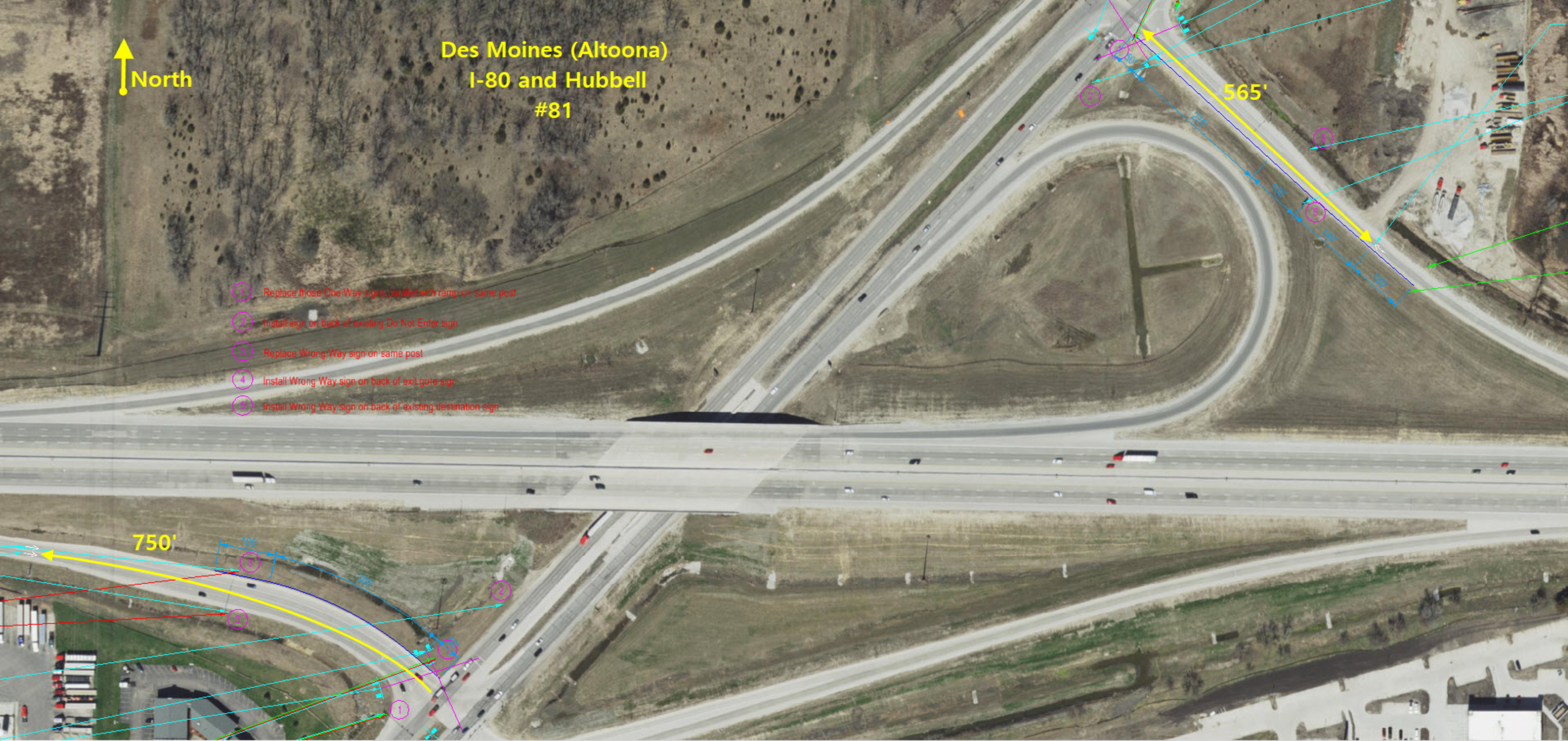


Center-Symbol



Des Moines (Altoona)
I-80 and Hubbell
#81

- ① Replace those One Way signs parallel with ramp on same post
- ② Install sign on back of existing Do Not Enter sign
- ③ Replace Wrong Way sign on same post
- ④ Install Wrong Way sign on back of exit gore sign
- ⑤ Install Wrong Way sign on back of existing destination sign



South of Donnellson) Ia 27 & US 218 #82



INSTALL
R2-1 (48'x54") One Way - No Left Turn



275'



- Remove the No Left Turn sign from the intersection
- Install a No U-Turn sign on the east side of the road
- Install a Right Turn sign on the east side of the road
- Install a Left Turn sign on the east side of the road

REMOVE
R2-1 (48'x54") No Left Turn Sign



INSTALL
R2-1 (48'x54") No Left Turn Sign



INSTALL
R2-1 (48'x54") One Way - No Left Turn



INSTALL
R2-1 (48'x54") One Way - No Left Turn



INSTALL
R2-1 (48'x54") One Way - No Left Turn



INSTALL
R2-1 (48'x54") One Way - No Left Turn



INSTALL
R2-1 (48'x54") No Left Turn Sign



INSTALL
R2-1 (48'x54") No Left Turn Sign



REMOVE
R2-1 (48'x54") No Left Turn Sign



REMOVE
R2-1 (48'x54") No Left Turn Sign



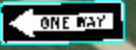
INSTALL
R2-1 (48'x54") No Left Turn Sign

350'

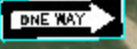




INSTALL
R6-1 (54"x18") One Way On left Arrow



INSTALL
R6-1 (54"x18") One Way On Right Arrow



INSTALL
R3-2 (36"x36") No Left Turn Symbol



INSTALL
3B-24 (23.5"x9") Wrong Way Arrow

INSTALL
R5-1A (42"x30") Wrong Way



REMOVE
R5-1 (36"x36") Do Not Enter Symbol



REMOVE
R4-7 (24"x30") Keep right - Symbol



INSTALL
R4-7 (36"x48") Keep right - Symbol



INSTALL
3B-24 (23.5"x9") Wrong Way Arrow

100' 100'

50'

1 Replace R4-7C Keep Right sign on same assembly

Toledo, US 30 & BUS-30/Lincoln Way
Site #83



North



Manchester
US 20 & Jefferson Rd
#84



- ① Install Wrong Way sign on back of exit gore sign
- ② Install Wrong Way sign on back of existing Stop Ahead sign
- ③ Install Do Not Enter sign on back of existing destination sign
- ④ Replace Wrong Way sign on same post



UAC
R5-1A (36"x24") Wrong Way



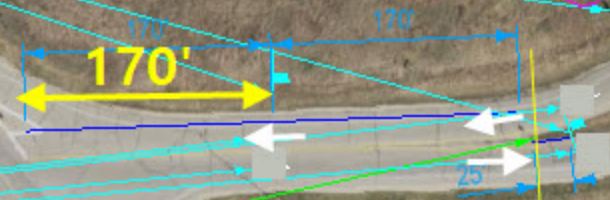
INSTALL
R5-1A (42"x30") Wrong Way



INSTALL
R5-1 (48"x48") Do Not Enter-Symbol



UAC
R5-1 (30"x30") Do Not Enter-Symbol





West of Fort Dodge, US 169 and 2nd Ave
#85

Existing Wrong Way @ 335'
from Centerline of 2nd Ave
Place new WWA at 235'



Small D-Board at 345'
WWA at 300'
New WW at 400'

I-880 & L-34
#86

1 Place Wrong Way sign on same post
2 Install Do Not Enter sign on back of existing destination sign
3 Install Wrong Way sign on back of exit gore sign

North



UAC
R4-7 (48"x66") Keep right - Symbol



REMOVE
R5-1 (36"x36") Do Not Enter-Symbol

180'



REMOVE
R5-1A (36"x24") Wrong Way



UAC
R5-1A (36"x24") Wrong Way



INSTALL
R5-1A (42"x30") Wrong Way

INSTALL
R5-1A (42"x30")

UAC
R5-1A (36"x24") Wrong Way

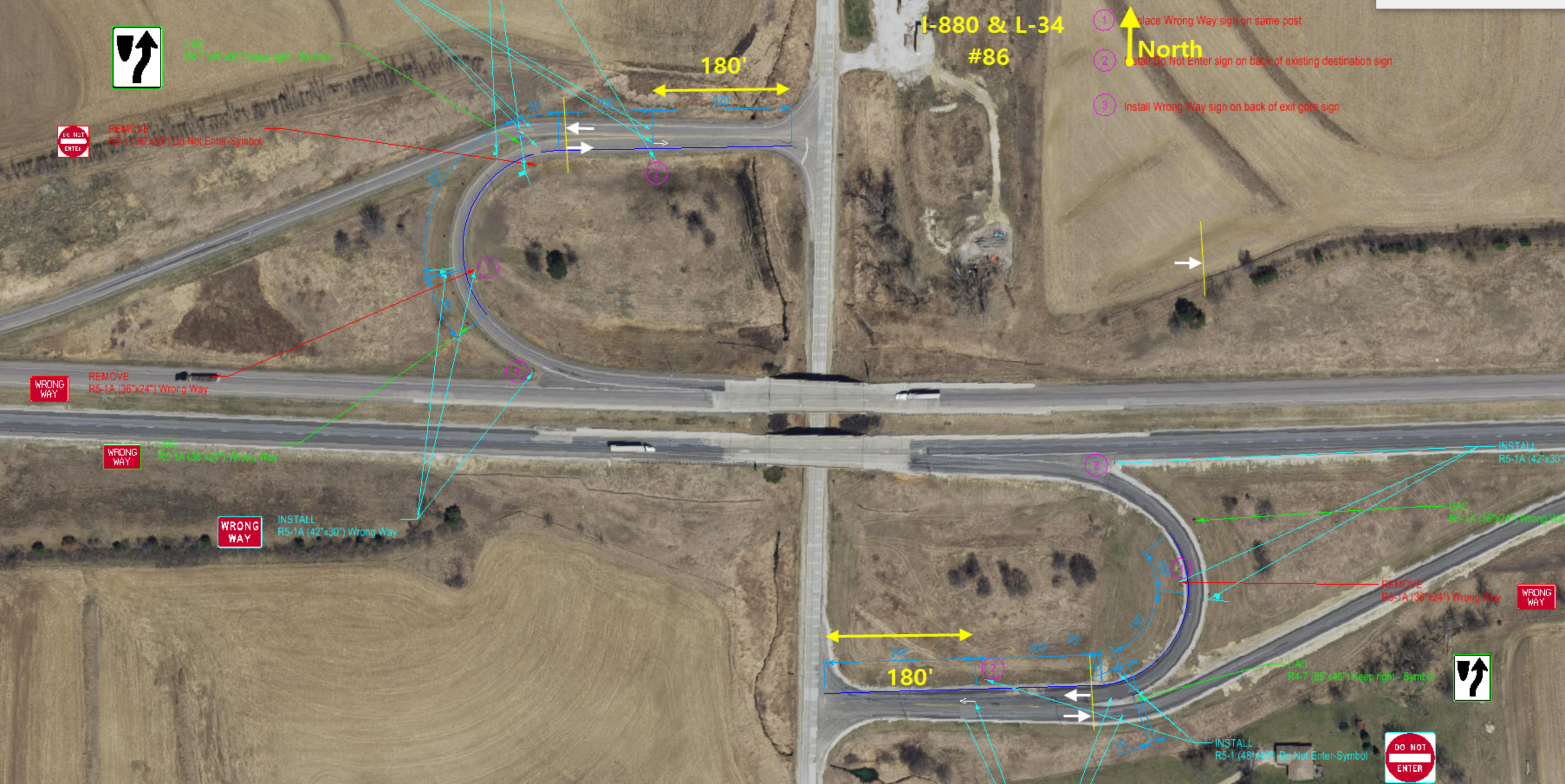
REMOVE
R5-1A (36"x24") Wrong Way



UAC
R4-7 (36"x48") Keep right - Symbol



INSTALL
R5-1 (48"x48") Do Not Enter-Symbol



US 218 & Ia 14
#87



- 1 Install Wrong Way sign on back of exit gore sign
- 2 Install Do Not Enter sign on back of existing destination sign
- 3 Install Wrong Way sign on back of existing logo board

190'

200'

INSTALL
R5-1 (48"x48") Do Not Enter-Symbol

INSTALL
3B-24 (23.5"x9") Wrong Way Arrow

INSTALL
R5-1 (48"x48") Do Not Enter

REMOVE
R4-7 (36")

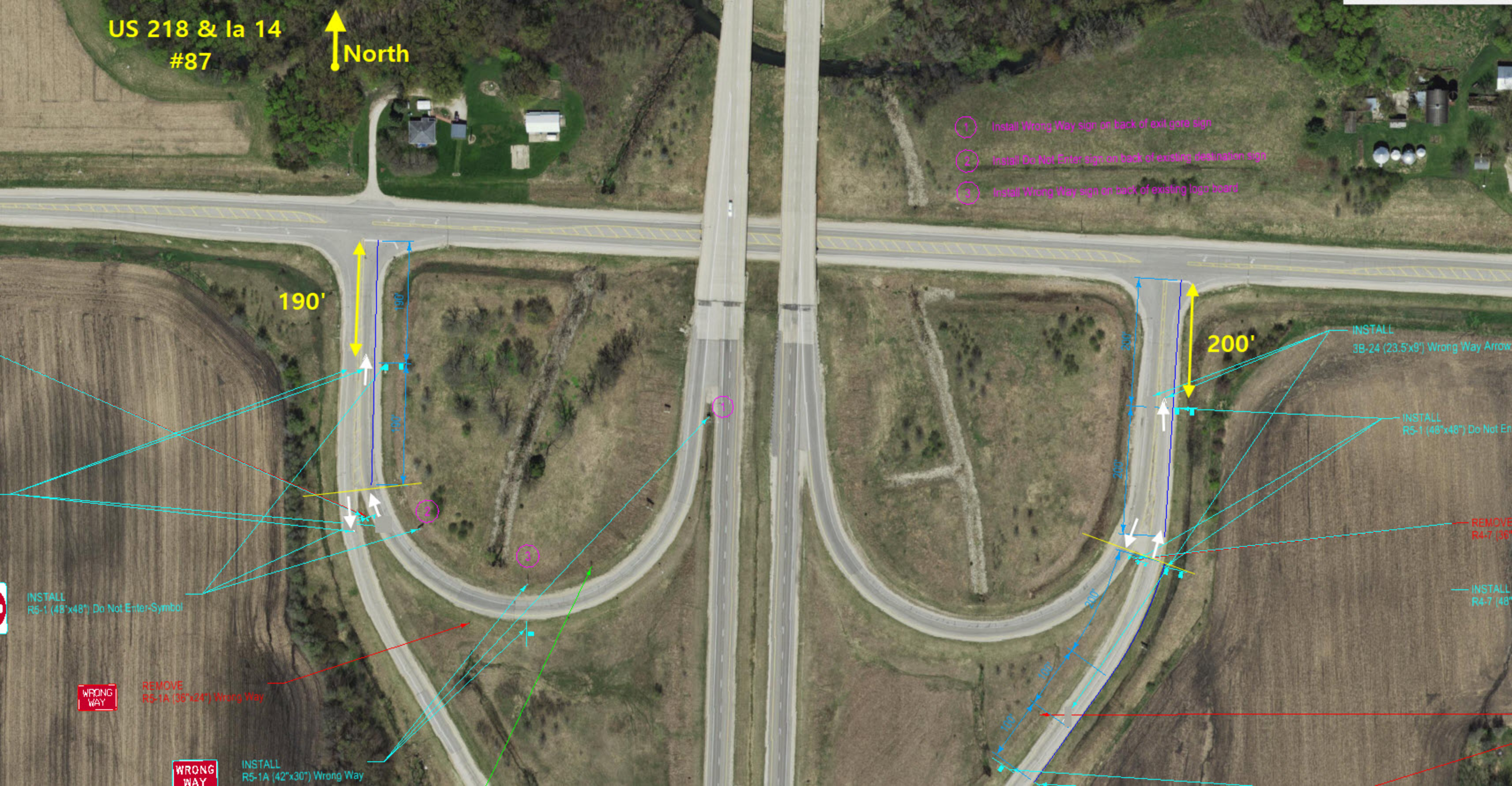
INSTALL
R4-7 (48")

WRONG
WAY

REMOVE
R5-1A (36"x24") Wrong Way

WRONG
WAY

INSTALL
R5-1A (42"x30") Wrong Way



I-80 & Ia 173
#88

North

365'

350'

- 1. Install new way sign back to back with existing sign
- 2. Install Wrong Way sign on back of existing sign
- 3. Move existing One Way sign into pipe and add second one way sign behind
- 4. Install Wrong Way sign on back of existing one way sign

INSTALL
RS-1 (48"x60") No No Entry Symbol

REMOVE
RS-1 (48"x60") No No Entry Symbol

INSTALL
RS-1A (42"x30") Wrong Way

INSTALL
RS-2 (36"x30")

INSTALL
RS-1 (48"x60")



Wrong Way

Wrong Way

INSTALL
RS-1 (48"x60") Wrong Way

INSTALL
RS-1 (48"x60") No Right Turn Symbol

REMOVE
RS-1 (48"x60") No No Entry Symbol

INSTALL
RS-1 (48"x60")

LRC
RS-1 (48"x60") One Way on left Arrow

INSTALL
RE-1 (36"x60") One Way on Right Arrow

REMOVE
RS-1 (48"x60") No No Entry Symbol

LRC
RE-1 (36"x60") One Way on Right Arrow

INSTALL
RE-1 (36"x60") One Way on left Arrow

INSTALL
RS-2 (36"x30") No Left Turn Symbol

Us 30 & Ia 17
#89

North

- 1 Install Wrong Way sign on back of exit gore sign
- 2 Install Wrong Way sign on back of existing destination sign

310'

350'



Brandon, I-380 and 330 St.
Site #90

North ↑



First D-Board @ 425'
WWA at 325'

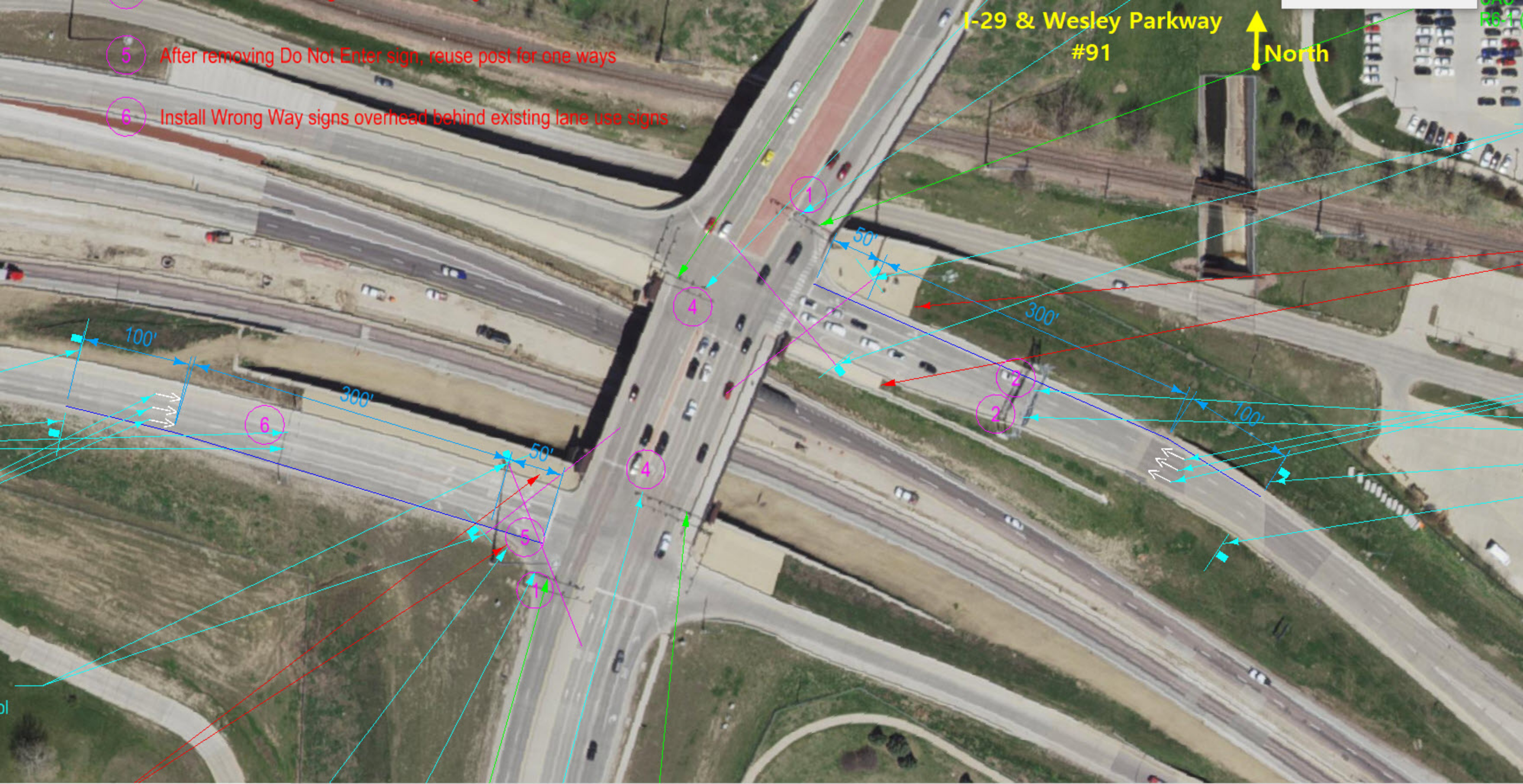
D-Board @ 365'
WWA at 265'



I-29 & Wesley Parkway
#91

North

- 5 After removing Do Not Enter sign, reuse post for one ways
- 6 Install Wrong Way signs overhead behind existing lane use signs



Sibley, Ia
Ia 60 and A22/170th/5th St.
#92



Place new WWA on loop
opposite existing WWA
on ramp

Place new WWA on ramp
opposite existing WWA
on loop

Place new WWA on loop
opposite existing WWA
on ramp

175'

175'



SE of Fort Dodge, US 20 and Quail Ave./Nelson
#93

D-Board @ 365'
D-Board @ 450'
WWA at 315'

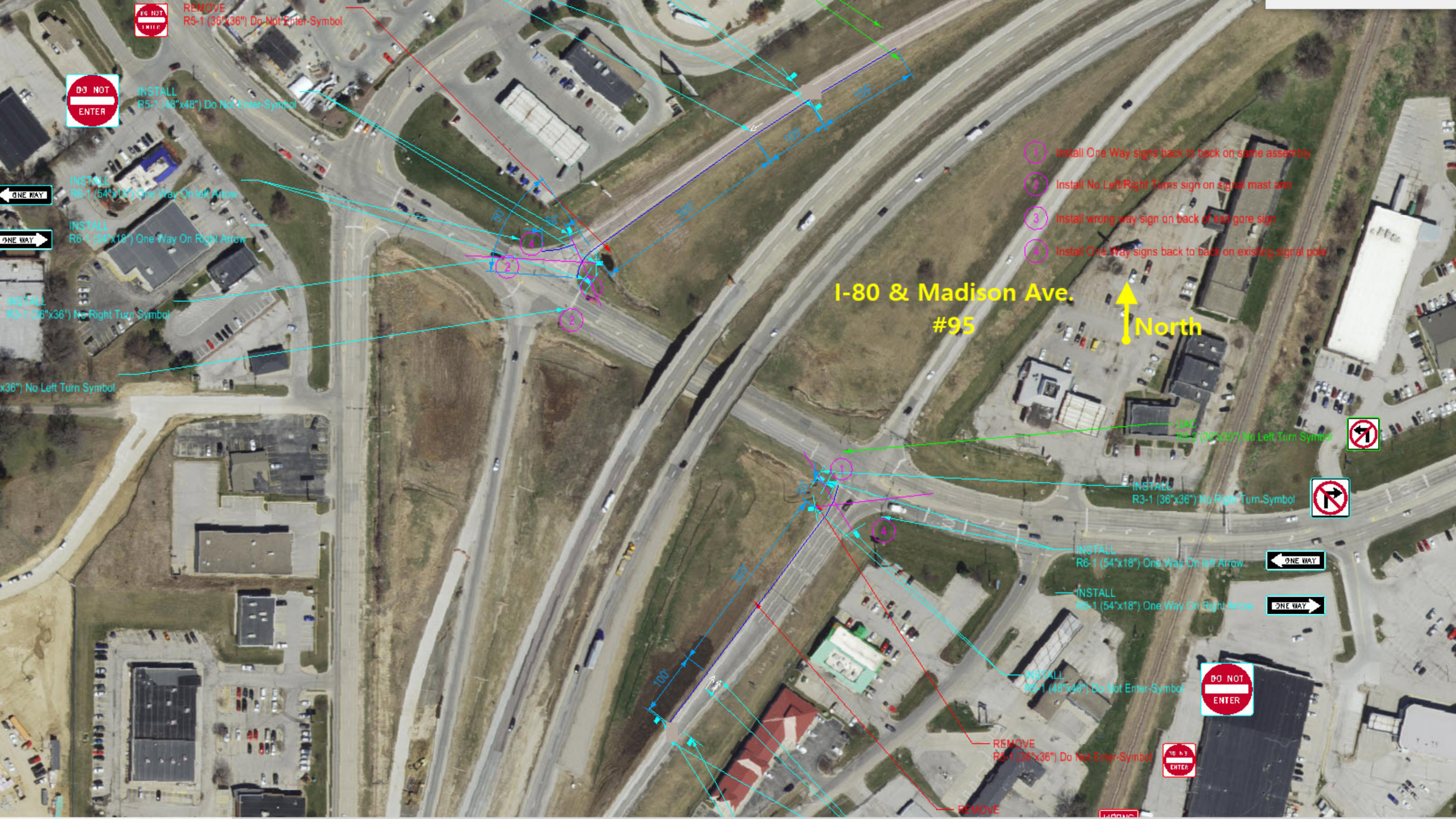
50'

180'



I-380 & Penn Ave.
#94

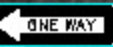




REMOVE
R5-1 (36"x36") Do Not Enter-Symbol



INSTALL
R5-1 (48"x48") Do Not Enter-Symbol



INSTALL
R6-1 (54"x18") One Way On left Arrow



INSTALL
R6-1 (54"x18") One Way On Right Arrow

INSTALL
R3-1 (36"x36") No Right Turn Symbol

INSTALL
R3-1 (36"x36") No Left Turn Symbol

I-80 & Madison Ave.
#95



- 1 Install One Way signs back to back on same assembly
- 2 Install No Left/Right Turns sign on signal mast arm
- 3 Install wrong way sign on back of exit gore sign
- 4 Install One Way signs back to back on existing signal pole

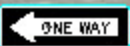
REMOVE
R3-2 (30"x30") No Left Turn Symbol



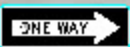
INSTALL
R3-1 (36"x36") No Right Turn Symbol



INSTALL
R6-1 (54"x18") One Way On left Arrow



INSTALL
R6-1 (54"x18") One Way On Right Arrow



INSTALL
R5-1 (48"x48") Do Not Enter-Symbol



REMOVE
R5-1 (36"x36") Do Not Enter-Symbol



REMOVE

REMOVE

Sheldon, Ia 60 and 2nd Ave.
#96



D-Board @ 370'
WWA at 270'

100'

100'

D-Board at 410'
WWA @ 310'



New Hampton, US 63 and LaSalle Ave.
#97

D-Board at 430'
WWA @ 330'

100'

180'

S. of Alton, Ia
Ia 60 and 470th St
#98



Place new WWA on loop
opposite existing WWA
on ramp

Place new WWA on ramp
opposite existing WWA
on loop



North

Des Moines, I-80 and 2nd
#99

Stop Ahead @ 800'
WWA at 700'

D-Board @ 450'
WWA @ 400'

100'

50'





North of Villisca, US 34 and US 71
#100

180'



© 2021 Google

Google Earth

Imagery Date: 10/14/2014 40°58'46.10" N 94°58'46.03" W elev 0 ft eye alt 20

Des Moines, I-235 & 31st St.

Site #101

Crocker St

North

100'

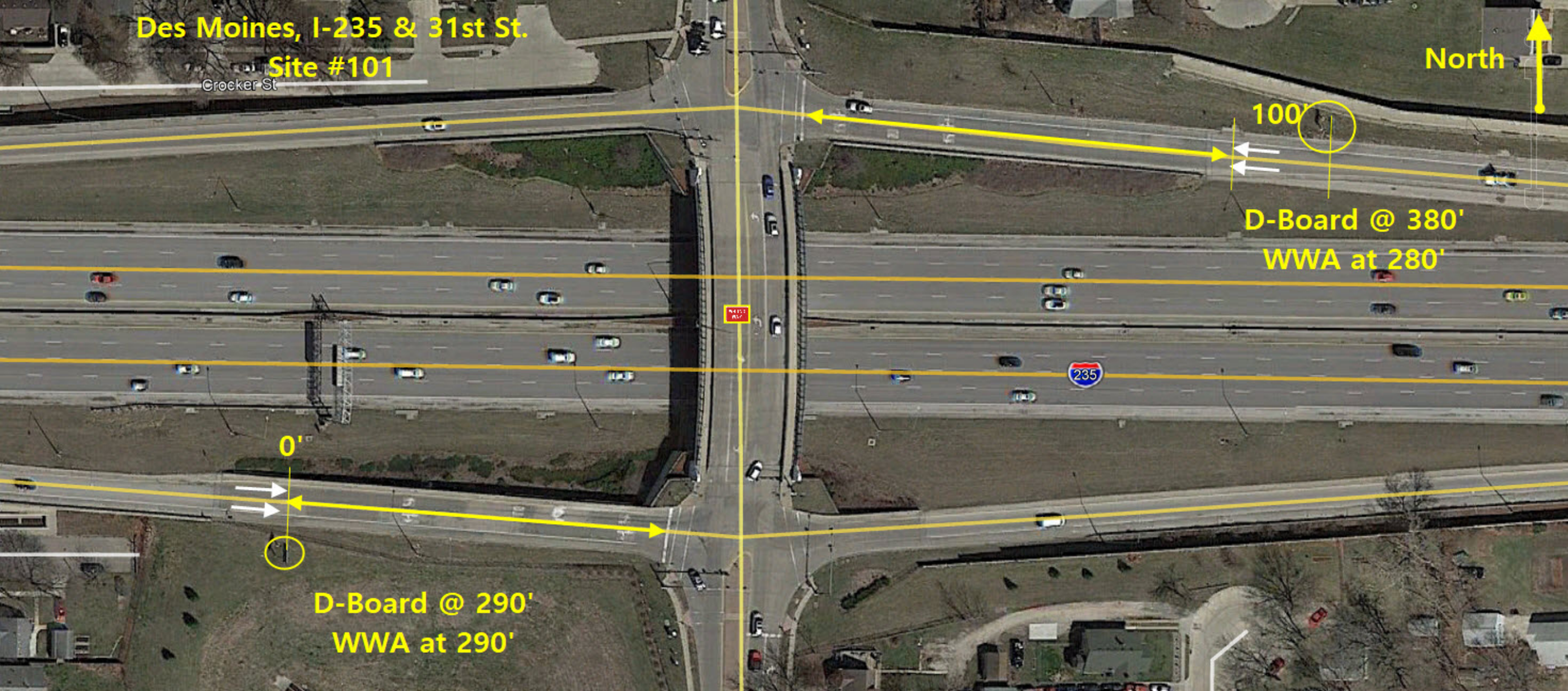
D-Board @ 380'

WWA at 280'

0'

D-Board @ 290'

WWA at 290'



Bettendorf, I-74 and Spruce Hills

#103



**D-Board @ 380'
WWA at 280'**



**Pavement in poor
condition. No WWA**

North of Ottumwa, US 63 and 145th Ave.

#104



© 2021 Google

Google Earth

1985

Imagery Date: 7/27/2020 41°05'33.26" N 92°26'20.26" W elev 0 ft eye alt 2144 ft

West side of Quad Cities
I-280 and Locust St.
#105



D-Board @ 390'
WWA at 290'

100'

100'

D-Board @ 400'
WWA at 300'



S side of Sioux City, US 20 and Lakeport St
#106



D-Board @ 400'
WWA at 300'



D-Board at 500'
WWA @ 400'



South of DeWitt, US 30 and 6th Ave.
#107

D-Board @ 380'
WWA at 280'



D-Board at 470'
WWA @ 370'

**I-380 and County Home
Road #108**

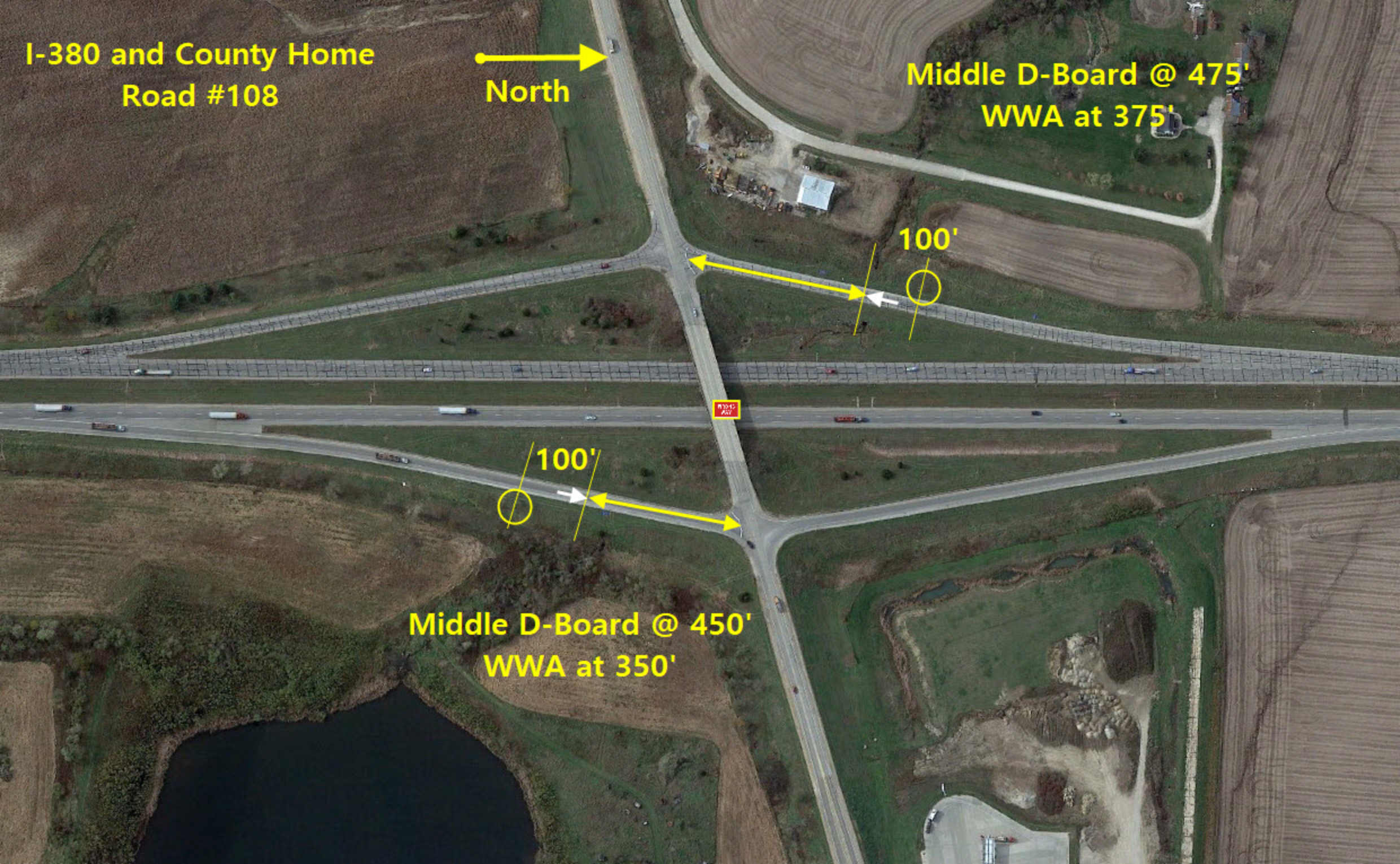
North

**Middle D-Board @ 475'
WWA at 375'**

100'

100'

**Middle D-Board @ 450'
WWA at 350'**



North

Odgen, US 30 and US 169
#109





East of Monticello, US 151 and Ia 38th
#110

D-Board @ 410'
WWA at 310'



Middle D-Board at 730'
WWA @ 630'



Urbana, I-380 and Ia 150
Site #111



D-Board @ 300'
WWA at 200'

100'

100'

First D-Board @ 360'
WWA at 260'

© 2021 Google



East of Sheldon, Ia 60 and US 18
#112

100'

D-Board @ 375'
WWA at 275'

100'

D-Board at 350' (west side)
WWA @ 250'
Place new WW on back of D-
Board (east side) @ 280'

Bettendorf, I-74 and Middle Road.

#113

North

Lane Use Signs @ 250'
WWA at 250' also

0'

Old D-Board @ 480'
WWA at 380'

100'

**Bettendorf, I-74 and 53rd St.
Site #114**

North



**Stop Ahead/WW @ 715'
WWA at 615'**



100'

**Stop Ahead/WW @ 670'
WWA at 550'**



120'



Just East of I-35, US 20 and Xirus Ave.
#116

D-Board @ 420'
WWA at 320'

100'

100'

D-Board at 400'
WWA @ 300'

Cedar Rapids, I-380 and Ia 100

North

#117

D-Board @ 425'
WWA at 350'



PREP
A&E

Stop Ahead @ 630'
WWA at 530'



Huxley, I-35 and Ia 210
Site #118



D-Board @ 320'
WWA at 250'

70'

100'

D-Board @ 350'
WWA at 250'



East of Mount Pleasant, US 34 and 235th
#119



0'



D-Board at 265'
WWA @ 265'
New WW Sign at 365'



Iowa City, I-80 and Ia 1
#120

Stop Ahead @ 660'
WWA at 560'

100'

100'

WW Signs @ 665'
WWA @ 565'





SW of LeMars, US 75 and 200th Ave.
#121

D-Board @ 340'
WWA at 300'
New WW at 400'

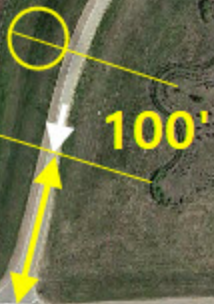


D-Board at 375'
WWA @ 275'



West of LeMars, US 75 and Ia 3
#122

D-Board @ 370'
WWA at 270'



D-Board at 355'
WWA @ 255'



North of LeMars, Ia 60 and US 75
#123

D-Board @ 300'
WWA at 300'
New WW at 400'

100'

75'

D-Board at 350'
WWA @ 275'
New WW at 375''



East of Orange City, Ia 60 and 450th
#124

D-Board @ 360'
WWA at 260'

100'



100'

D-Board at 365'
WWA @ 265'



SE of Sheldon, Ia 60 and Nest Ave
#125

D-Board @ 425'
WWA at 325'

100'

100'

D-Board at 400'
WWA @ 300'



South of Sibley, Ia
Ia 60 and Opal/2nd Ave.
#126



160'

Place new WWA on loop
opposite existing WWA
on ramp

Edge of
Paved
Shoulder

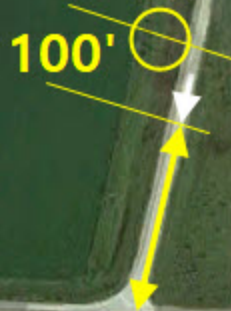
60'

Place new WWA on ramp
opposite existing WWA
on loop



North of Sibley, Ia 60 and Ia 9
#127

D-Board @ 420'
WWA at 320'



D-Board at 415'
WWA @ 315'

S. of Le Mars, Ia
Ia 60 and C38/210th
#145

North

135'

210th St

Hwy 76

C38

135'

75

© 2021 Google

Imagery Date

